

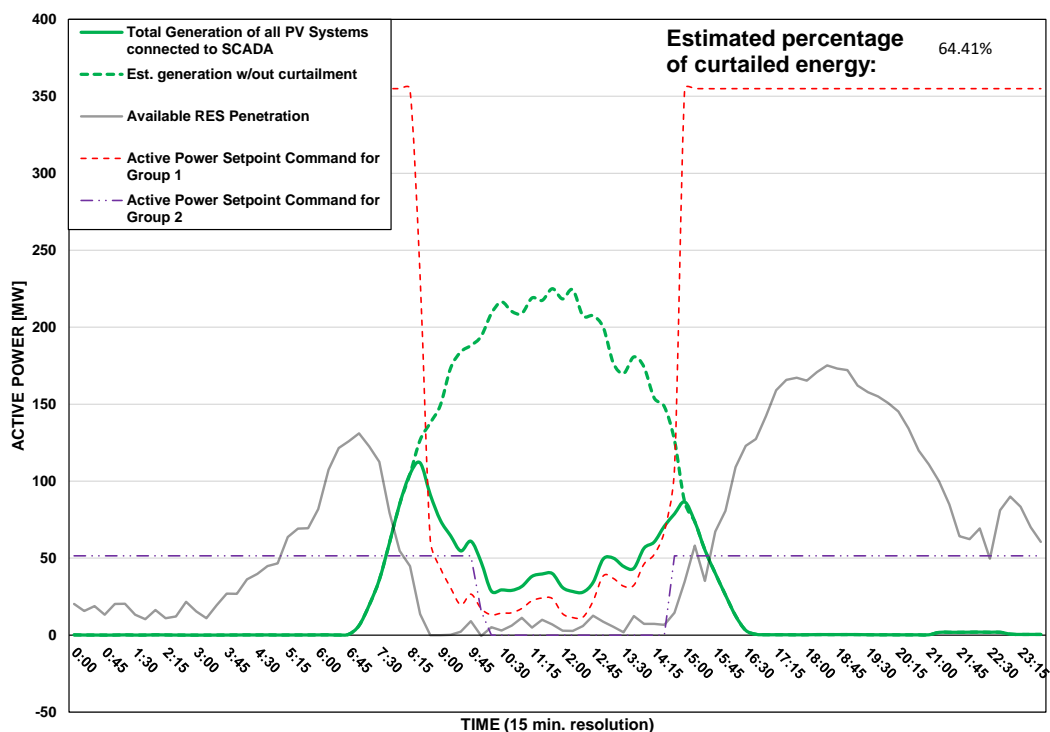
DISTRIBUTION SYSTEM OPERATOR SYSTEM OPERATION



PV Generation Curtailment Report

Date of Curtailment:	01/12/2025	Cut-off of PV Systems using RIPPLE and IoT:
Start of Curtailment (G1 - non Priority)	8:30	
Start of Curtailment (G2 - Priority)	10:00	Cut-off areas using RIPPLE: LAR 2, LIM 2, PAF 1 Cut-off areas using IoT: PV-NIC2, PV-NIC3, PV-LIM1, PV -ARTICLE 102
End of Curtailment (G1 - non Priority)	14:45	
End of Curtailment (G2 - Priority)	14:30	
Instruction from TSOC	YES	Start of cut-off: 10:30 End of cut-off: 15:45
Reason of Curtailment:	RES-E Generation Restriction due to low loading of the electrical system	
Total Estimated Energy of the day:	1370.4 MWh	Total Est. Energy of the cut-off PV systems using RIPPLE: 102.6MWh
Total Estimated Curtailed Energy:	882.7 MWh	Total Est. Energy of the cut-off PV systems using IoT: 106.7MWh
Percentage of Curtailed Energy:	64.41%	

Scada PVs Generation on 01/12/2025 (curtailment time: 08:30 - 14:45)

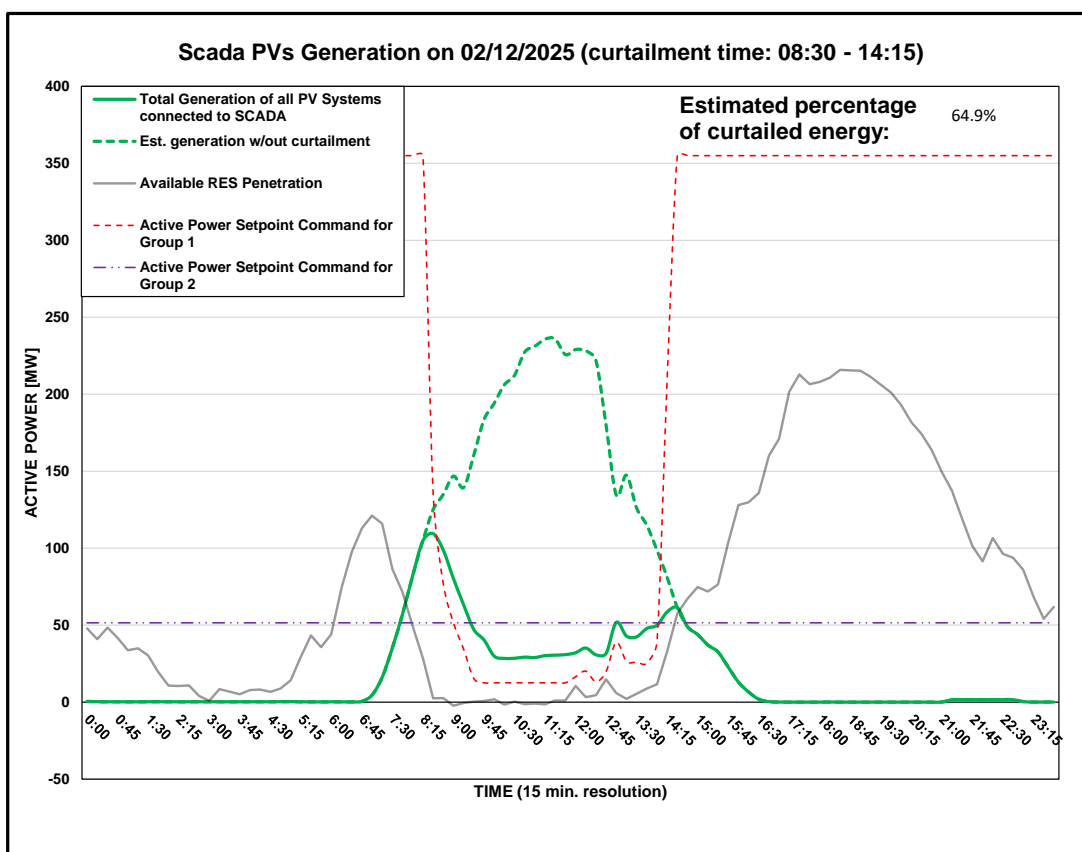


DISTRIBUTION SYSTEM OPERATOR SYSTEM OPERATION



PV Generation Curtailment Report

Date of Curtailment:	02/12/2025	Cut-off of PV Systems using RIPPLE and IoT:
Start of Curtailment (G1 - non Priority)	8:30	
Start of Curtailment (G2 - Priority)	9:30	Cut-off areas using RIPPLE: NIC 2 Cut-off areas using IoT: PV-NIC1, PV-LCA/FAM1, PV-LCA/FAM2, PV-LCA/FAM3, PV -ARTICLE 102
End of Curtailment (G1 - non Priority)	14:15	
End of Curtailment (G2 - Priority)	13:30	
Instruction from TSOC	YES	Start of cut-off: 09:45 End of cut-off: 15:15
Reason of Curtailment:	RES-E Generation Restriction due to low loading of the electrical system	
Total Estimated Energy of the day:	1202.2 MWh	Total Est. Energy of the cut-off PV systems using RIPPLE: 22MWh
Total Estimated Curtailed Energy:	780.2 MWh	Total Est. Energy of the cut-off PV systems using IoT: 90.7MWh
Percentage of Curtailed Energy:	64.9%	

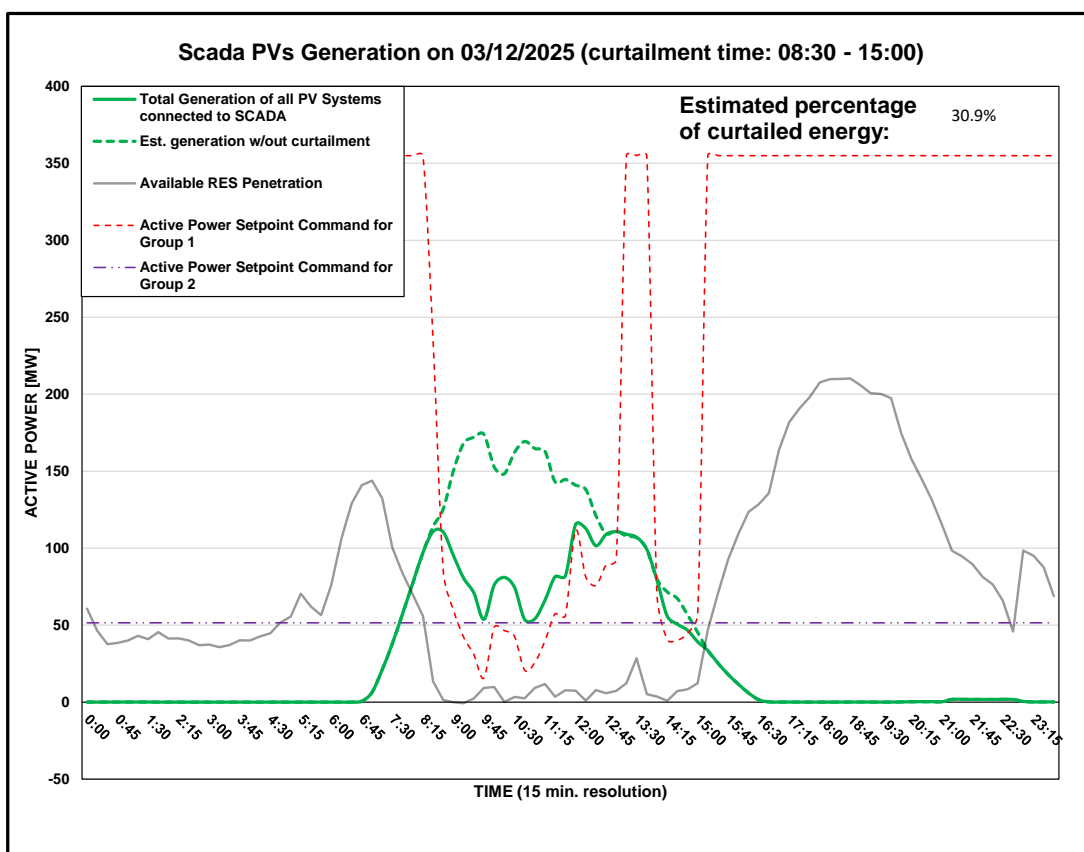


DISTRIBUTION SYSTEM OPERATOR SYSTEM OPERATION



PV Generation Curtailment Report

Date of Curtailment:	03/12/2025
Start of Curtailment (G1 - non Priority)	8:30
Start of Curtailment (G2 - Priority)	
End of Curtailment (G1 - non Priority)	15:00
End of Curtailment (G2 - Priority)	
Instruction from TSOC	YES
Reason of Curtailment:	RES-E Generation Restriction due to low loading of the electrical system
Total Estimated Energy of the day:	954.5 MWh
Total Estimated Curtailed Energy:	295.4 MWh
Percentage of Curtailed Energy:	30.9%



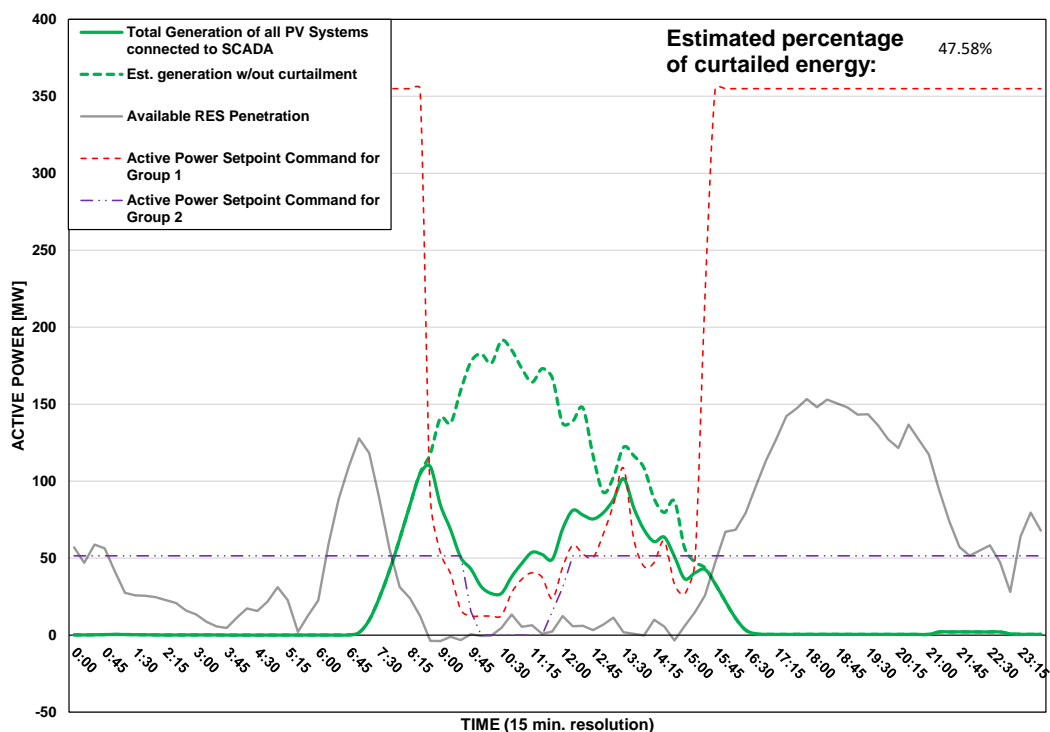
DISTRIBUTION SYSTEM OPERATOR SYSTEM OPERATION



PV Generation Curtailment Report

Date of Curtailment:	04/12/2025	Cut-off of PV Systems using IoT:
Start of Curtailment (G1 - non Priority)	8:45	
Start of Curtailment (G2 - Priority)	9:30	Cut-off areas using IoT: PV-NIC2, PV-NIC4, PV-LIM3, PV -ARTICLE 102
End of Curtailment (G1 - non Priority)	15:30	
End of Curtailment (G2 - Priority)	12:00	
Instruction from TSOC	YES	Start of cut-off: 09:45 End of cut-off: 12:00
Reason of Curtailment:	RES-E Generation Restriction due to low loading of the electrical system	
Total Estimated Energy of the day:	1016 MWh	
Total Estimated Curtailed Energy:	483.2 MWh	Total Est. Energy of the cut-off PV systems using IoT: 19.5MWh
Percentage of Curtailed Energy:	47.58%	

Scada PVs Generation on 04/12/2025 (curtailment time: 08:45 - 15:30)

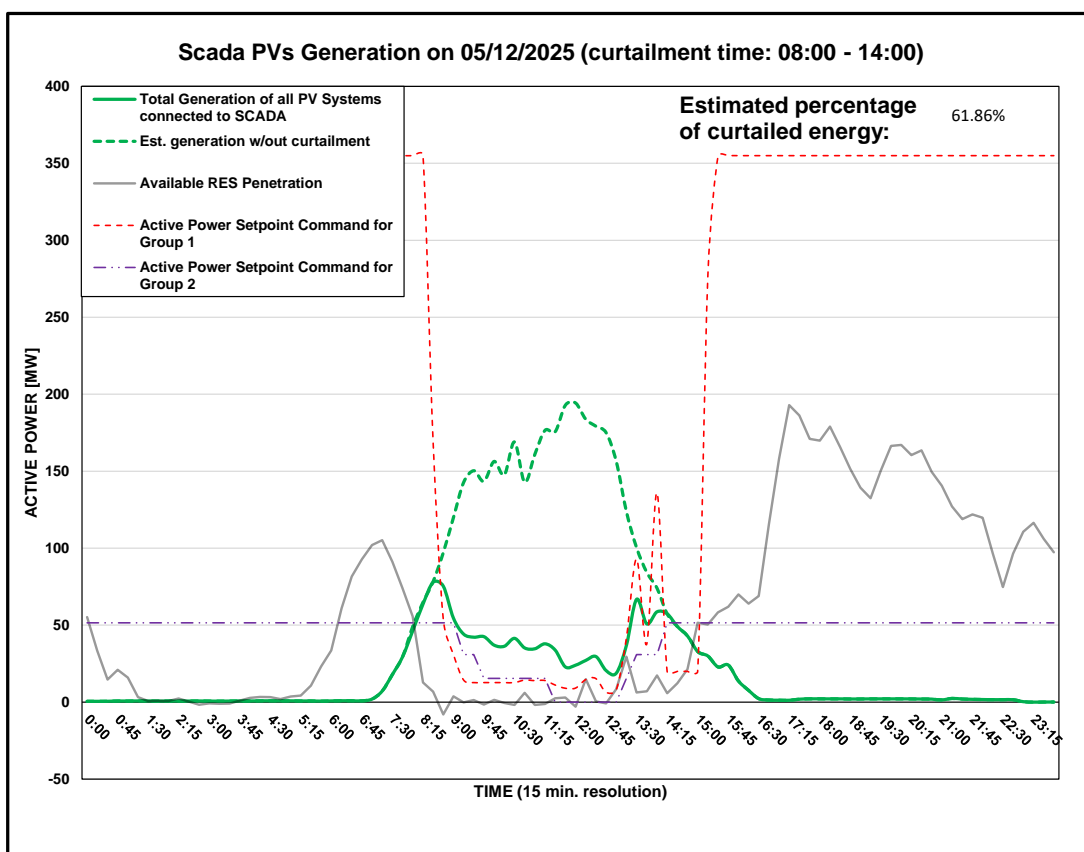


DISTRIBUTION SYSTEM OPERATOR SYSTEM OPERATION



PV Generation Curtailment Report

Date of Curtailment:	05/12/2025	Cut-off of PV Systems using IoT:
Start of Curtailment (G1 - non Priority)	8:00	
Start of Curtailment (G2 - Priority)	9:00	Cut-off areas using IoT: PV -ARTICLE 102
End of Curtailment (G1 - non Priority)	14:00	
End of Curtailment (G2 - Priority)	14:00	
Instruction from TSOC	YES	Start of cut-off: 08:45 End of cut-off: 14:15
Reason of Curtailment:	RES-E Generation Restriction due to low loading of the electrical system	
Total Estimated Energy of the day:	961.8 MWh	
Total Estimated Curtailed Energy:	594.9 MWh	Total Est. Energy of the cut-off PV systems using IoT: 9.8MWh
Percentage of Curtailed Energy:	61.86%	

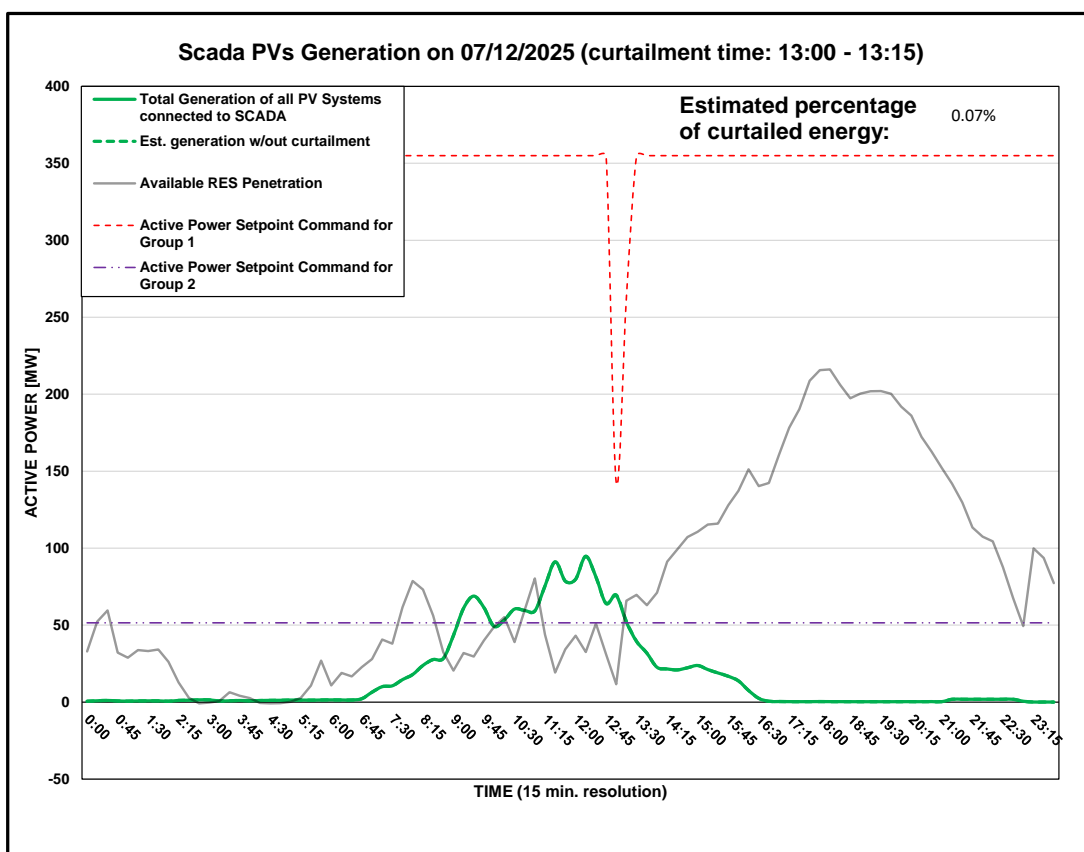


DISTRIBUTION SYSTEM OPERATOR SYSTEM OPERATION



PV Generation Curtailment Report

Date of Curtailment:	07/12/2025
Start of Curtailment (G1 - non Priority)	13:00
Start of Curtailment (G2 - Priority)	
End of Curtailment (G1 - non Priority)	13:15
End of Curtailment (G2 - Priority)	
Instruction from TSOC	YES
Reason of Curtailment:	RES-E Generation Restriction due to low loading of the electrical system
Total Estimated Energy of the day:	414.6 MWh
Total Estimated Curtailed Energy:	0.3 MWh
Percentage of Curtailed Energy:	0.07%

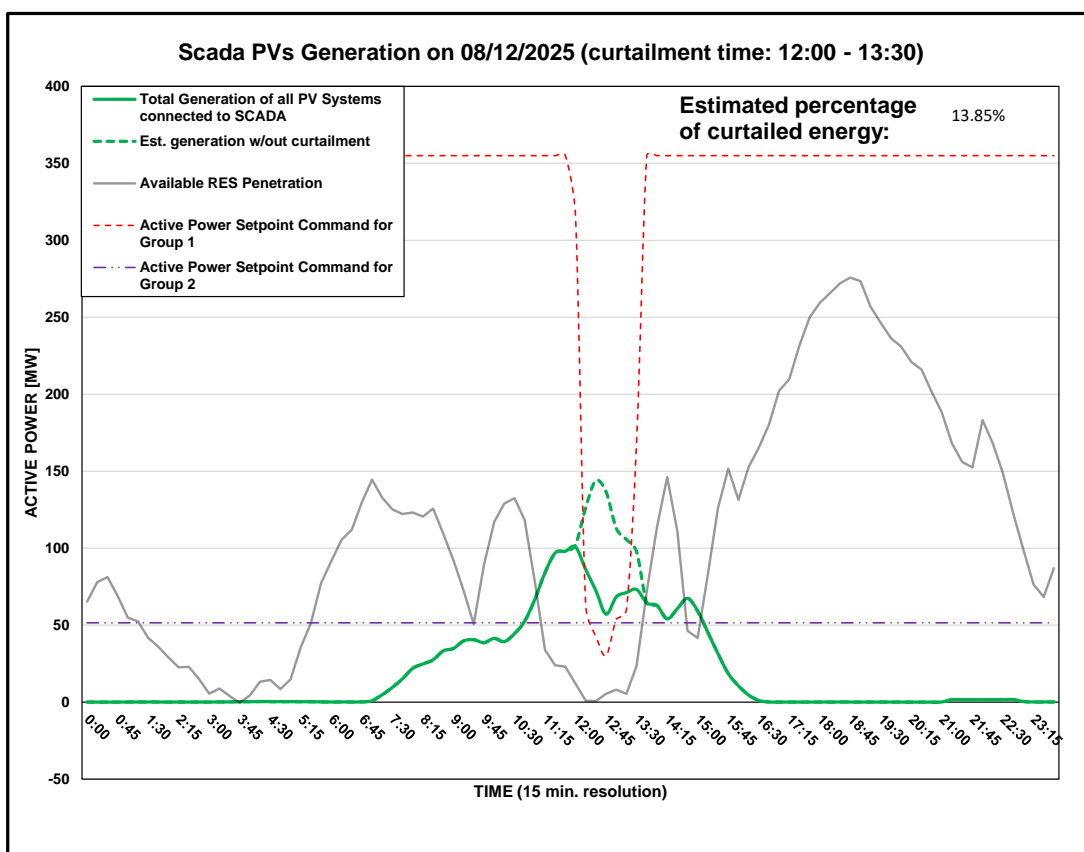


DISTRIBUTION SYSTEM OPERATOR SYSTEM OPERATION



PV Generation Curtailment Report

Date of Curtailment:	08/12/2025
Start of Curtailment (G1 - non Priority)	12:00
Start of Curtailment (G2 - Priority)	
End of Curtailment (G1 - non Priority)	13:30
End of Curtailment (G2 - Priority)	
Instruction from TSOC	YES
Reason of Curtailment:	RES-E Generation Restriction due to low loading of the electrical system
Total Estimated Energy of the day:	534.9 MWh
Total Estimated Curtailed Energy:	74.1 MWh
Percentage of Curtailed Energy:	13.85%

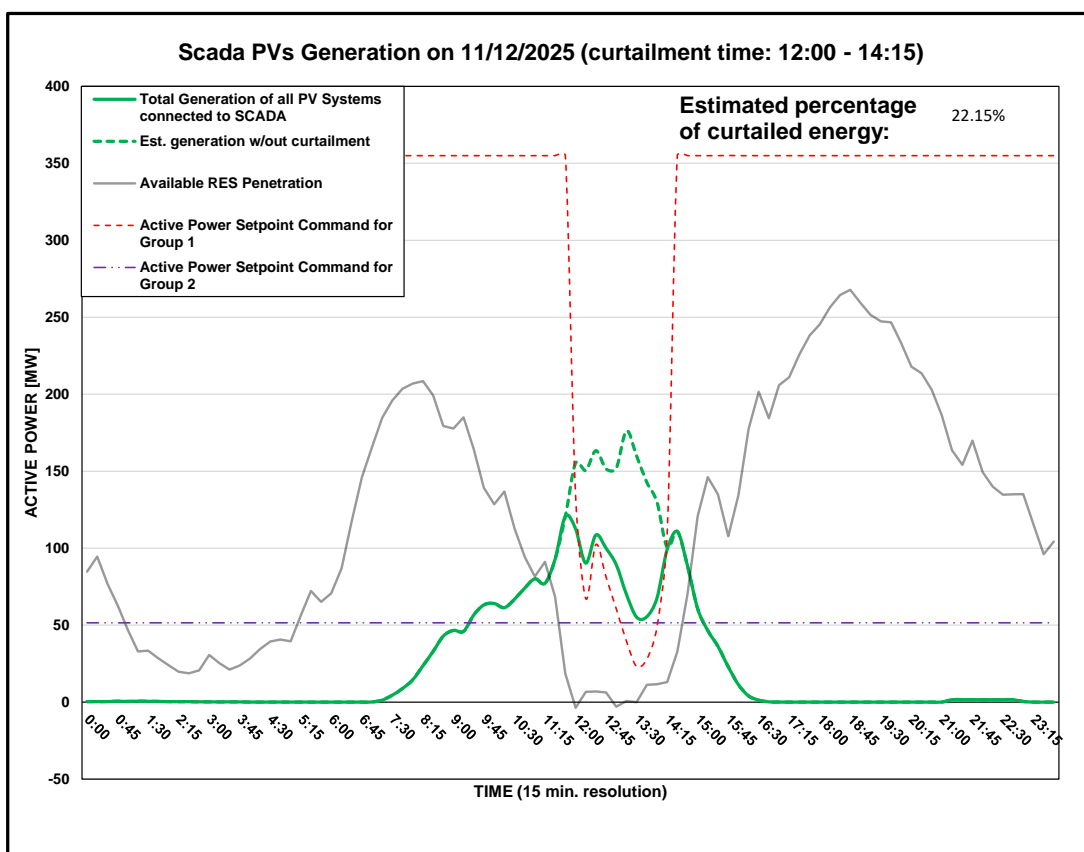


DISTRIBUTION SYSTEM OPERATOR SYSTEM OPERATION



PV Generation Curtailment Report

Date of Curtailment:	11/12/2025
Start of Curtailment (G1 - non Priority)	12:00
Start of Curtailment (G2 - Priority)	
End of Curtailment (G1 - non Priority)	14:15
End of Curtailment (G2 - Priority)	
Instruction from TSOC	YES
Reason of Curtailment:	RES-E Generation Restriction due to low loading of the electrical system
Total Estimated Energy of the day:	715.6 MWh
Total Estimated Curtailed Energy:	158.5 MWh
Percentage of Curtailed Energy:	22.15%

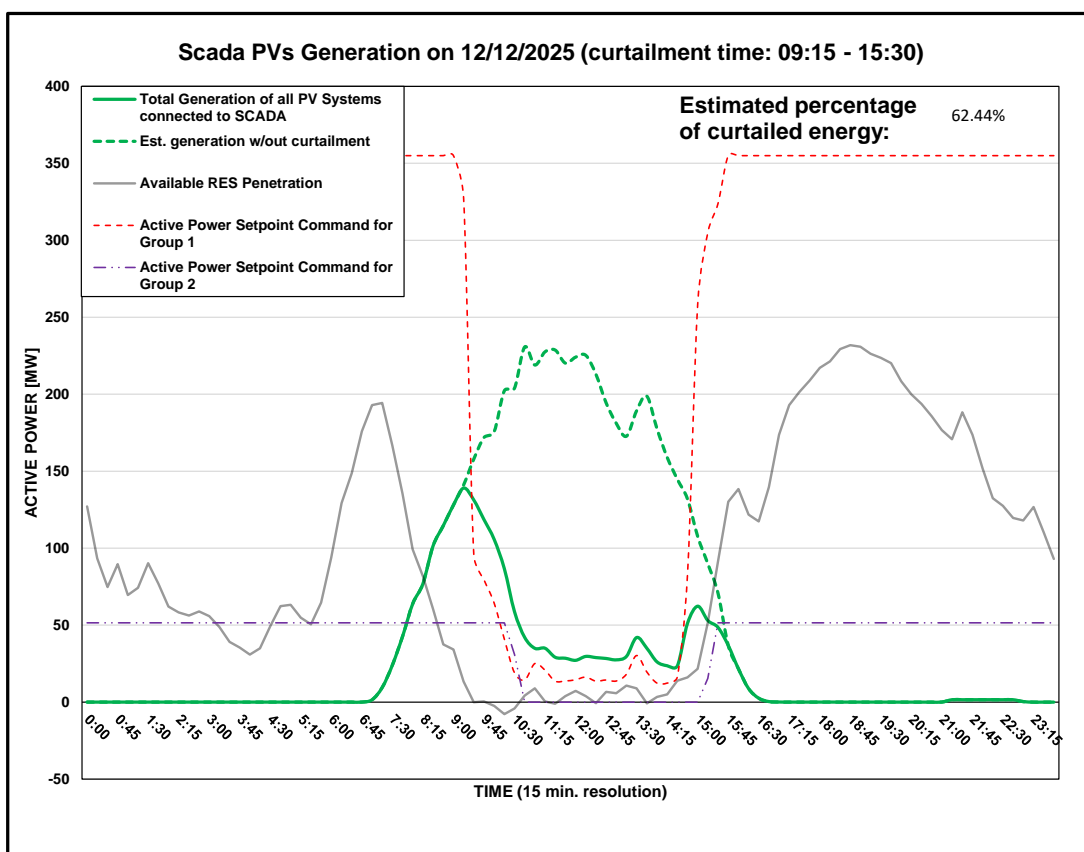


DISTRIBUTION SYSTEM OPERATOR SYSTEM OPERATION



PV Generation Curtailment Report

Date of Curtailment:	12/12/2025	Cut-off of PV Systems using RIPPLE and IoT:
Start of Curtailment (G1 - non Priority)	9:15	Cut-off areas using RIPPLE: LAR 1, PAF 1 Cut-off areas using IoT: PV-NIC1, PV-ARTICLE 102
Start of Curtailment (G2 - Priority)	10:30	
End of Curtailment (G1 - non Priority)	15:30	
End of Curtailment (G2 - Priority)	15:15	
Instruction from TSOC	YES	Start of cut-off: 10:45 End of cut-off: 15:30
Reason of Curtailment:	RES-E Generation Restriction due to low loading of the electrical system	
Total Estimated Energy of the day:	1326.4 MWh	Total Est. Energy of the cut-off PV systems using RIPPLE: 42.4MWh
Total Estimated Curtailed Energy:	828.2 MWh	Total Est. Energy of the cut-off PV systems using IoT: 36.8MWh
Percentage of Curtailed Energy:	62.44%	



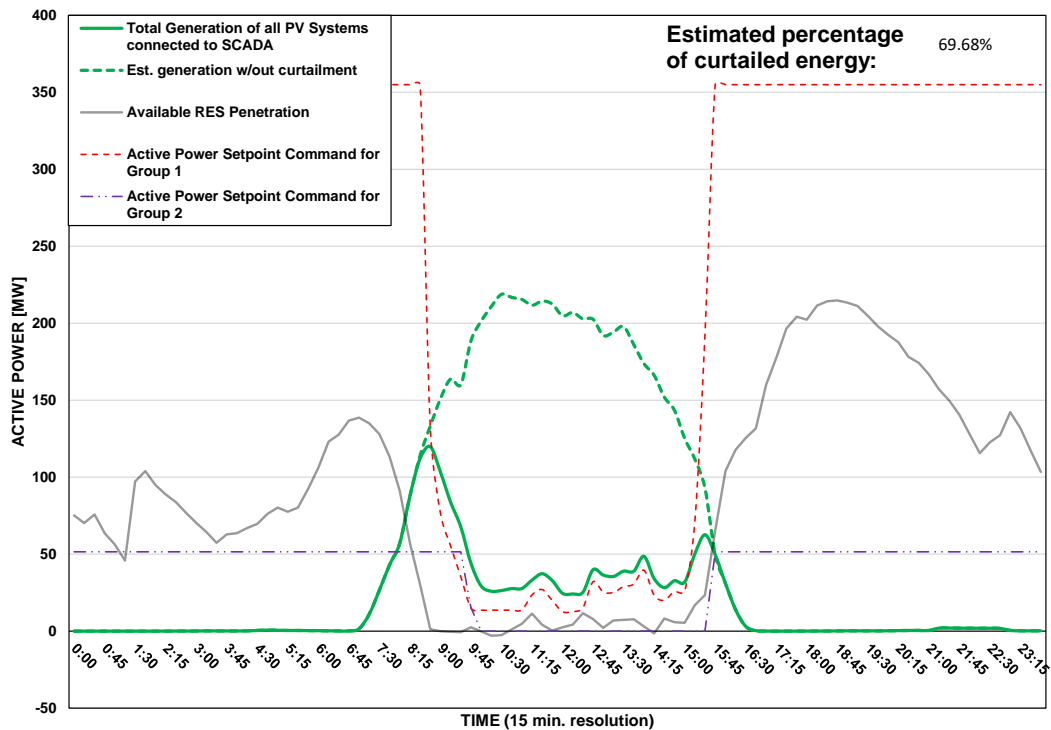
DISTRIBUTION SYSTEM OPERATOR SYSTEM OPERATION



PV Generation Curtailment Report

Date of Curtailment:	13/12/2025	Cut-off of PV Systems using RIPPLE and IoT:
Start of Curtailment (G1 - non Priority)	8:30	
Start of Curtailment (G2 - Priority)	9:30	Cut-off areas using RIPPLE: NIC 2 Cut-off areas using IoT: PV-NIC1, PV-NIC4, PV-LIM1, PV-LIM3, PV-PAF1, PV - ARTICLE 102
End of Curtailment (G1 - non Priority)	15:30	
End of Curtailment (G2 - Priority)	15:30	
Instruction from TSOC	YES	Start of cut-off: 09:45 End of cut-off: 15:45
Reason of Curtailment:	RES-E Generation Restriction due to low loading of the electrical system	
Total Estimated Energy of the day:	1378.2 MWh	Total Est. Energy of the cut-off PV systems using RIPPLE: 27.4MWh
Total Estimated Curtailed Energy:	960.4 MWh	Total Est. Energy of the cut-off PV systems using IoT: 175.1MWh
Percentage of Curtailed Energy:	69.68%	

Scada PVs Generation on 13/12/2025 (curtailment time: 08:30 - 15:30)



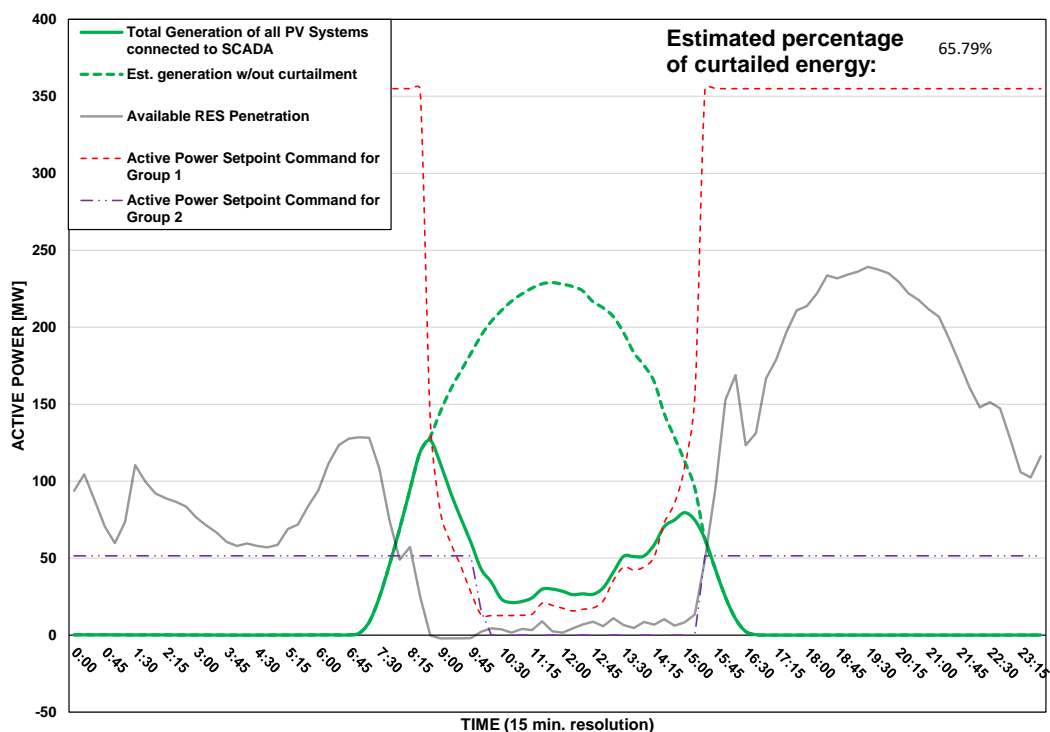
DISTRIBUTION SYSTEM OPERATOR SYSTEM OPERATION



PV Generation Curtailment Report

Date of Curtailment:	14/12/2025	<u>Cut-off of PV Systems using RIPPLE and IoT:</u>
Start of Curtailment (G1 - non Priority)	8:45	
Start of Curtailment (G2 - Priority)	10:00	Cut-off areas using RIPPLE: NIC 2, NIC 3, LIM 1, LIM 2 Cut-off areas using IoT: PV -ARTICLE 102
End of Curtailment (G1 - non Priority)	15:15	
End of Curtailment (G2 - Priority)	15:15	
Instruction from TSOC	YES	Start of cut-off: 10:00 End of cut-off: 15:30
Reason of Curtailment:	RES-E Generation Restriction due to low loading of the electrical system	
Total Estimated Energy of the day:	1386.1 MWh	Total Est. Energy of the cut-off PV systems using RIPPLE: 207.8MWh
Total Estimated Curtailed Energy:	911.9 MWh	Total Est. Energy of the cut-off PV systems using IoT: 14.9MWh
Percentage of Curtailed Energy:	65.79%	

Scada PVs Generation on 14/12/2025 (curtailment time: 08:45 - 15:15)

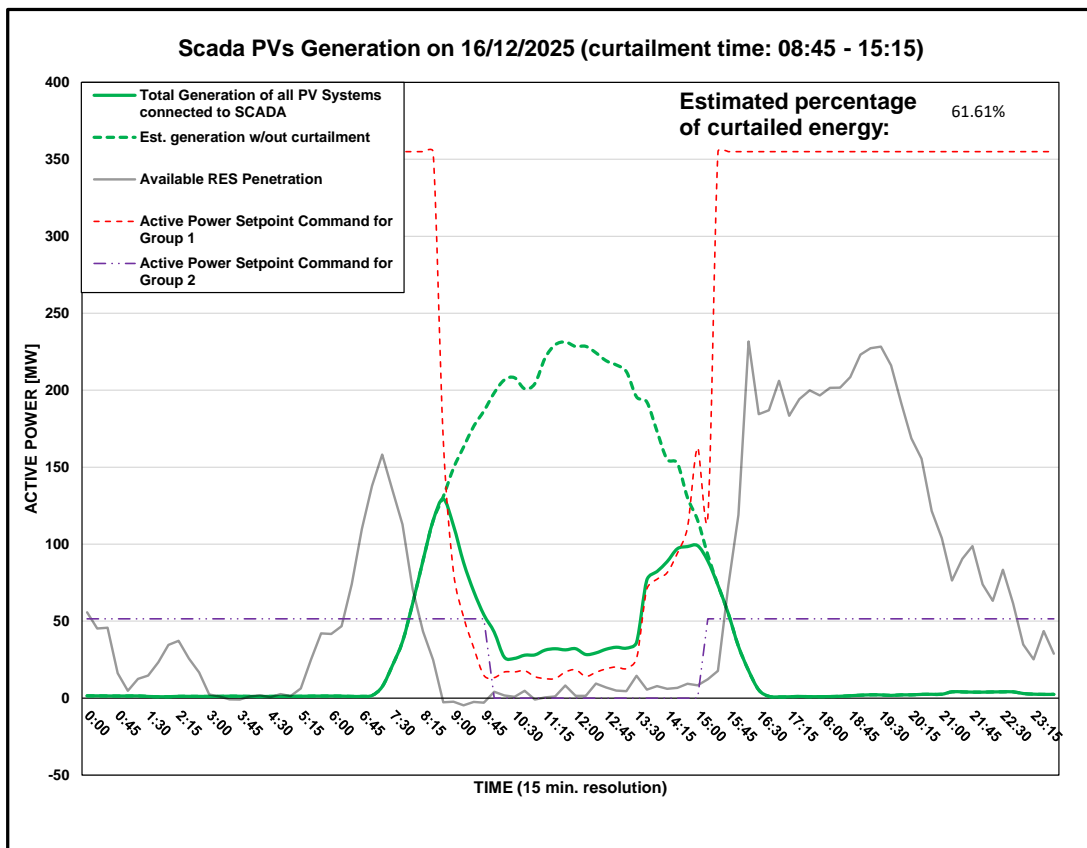


DISTRIBUTION SYSTEM OPERATOR SYSTEM OPERATION



PV Generation Curtailment Report

Date of Curtailment:	16/12/2025	Cut-off of PV Systems using RIPPLE and IoT:
Start of Curtailment (G1 - non Priority)	8:45	
Start of Curtailment (G2 - Priority)	9:45	Cut-off areas using RIPPLE: NIC 3, PAF 2 Cut-off areas using IoT: PV-NIC2, PV-LCA/FAM1, PV-LCA/FAM2, PV-LCA/FAM3, PV-PAF3, PV -ARTICLE 102
End of Curtailment (G1 - non Priority)	15:15	
End of Curtailment (G2 - Priority)	15:00	
Instruction from TSOC	YES	Start of cut-off: 10:30 End of cut-off: 16:00
Reason of Curtailment:	RES-E Generation Restriction due to low loading of the electrical system	
Total Estimated Energy of the day:	1416.3 MWh	Total Est. Energy of the cut-off PV systems using RIPPLE: 92MWh
Total Estimated Curtailed Energy:	872.6 MWh	Total Est. Energy of the cut-off PV systems using IoT: 146.4MWh
Percentage of Curtailed Energy:	61.61%	



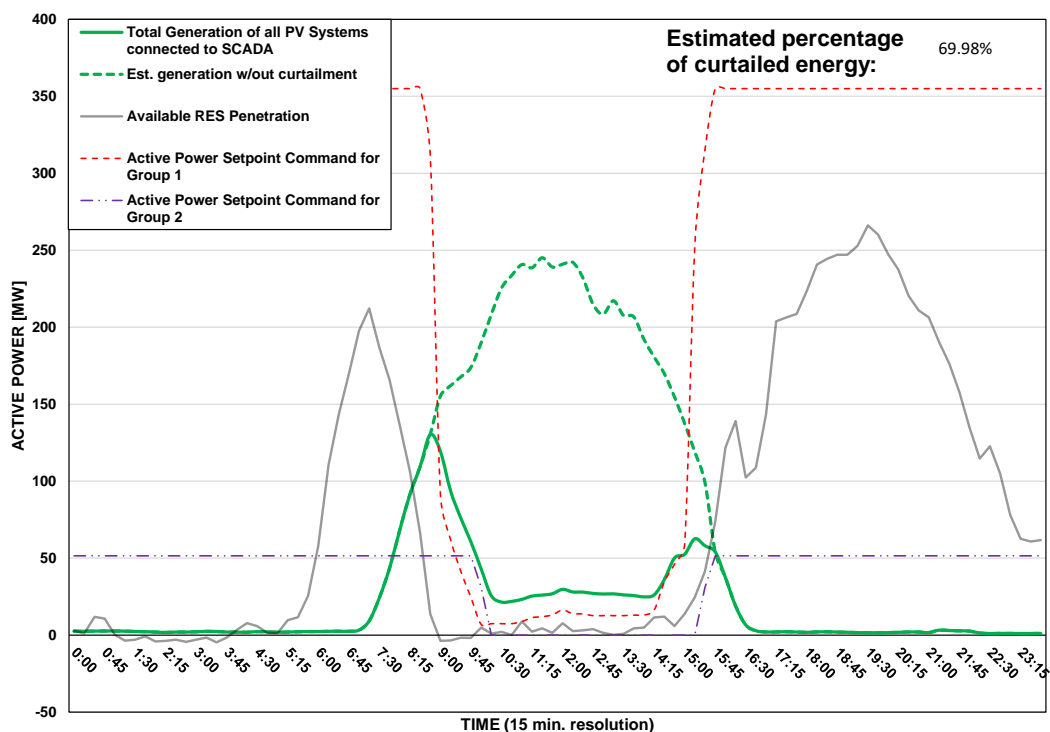
DISTRIBUTION SYSTEM OPERATOR SYSTEM OPERATION



PV Generation Curtailment Report

Date of Curtailment:	17/12/2025	<u>Cut-off of PV Systems using RIPPLE and IoT:</u>
Start of Curtailment (G1 - non Priority)	8:45	
Start of Curtailment (G2 - Priority)	10:00	Cut-off areas using RIPPLE: NIC 1, NIC 3, LAR 1, LAR 2, LIM 1 Cut-off areas using IoT: PV -ARTICLE 102
End of Curtailment (G1 - non Priority)	15:30	
End of Curtailment (G2 - Priority)	15:30	
Instruction from TSOC	YES	Start of cut-off: 10:15 End of cut-off: 15:30
Reason of Curtailment:	RES-E Generation Restriction due to low loading of the electrical system	
Total Estimated Energy of the day:	1504.6 MWh	Total Est. Energy of the cut-off PV systems using RIPPLE: 190.5MWh
Total Estimated Curtailed Energy:	1052.9 MWh	Total Est. Energy of the cut-off PV systems using IoT: 13.2MWh
Percentage of Curtailed Energy:	69.98%	

Scada PVs Generation on 17/12/2025 (curtailment time: 08:45 - 15:30)



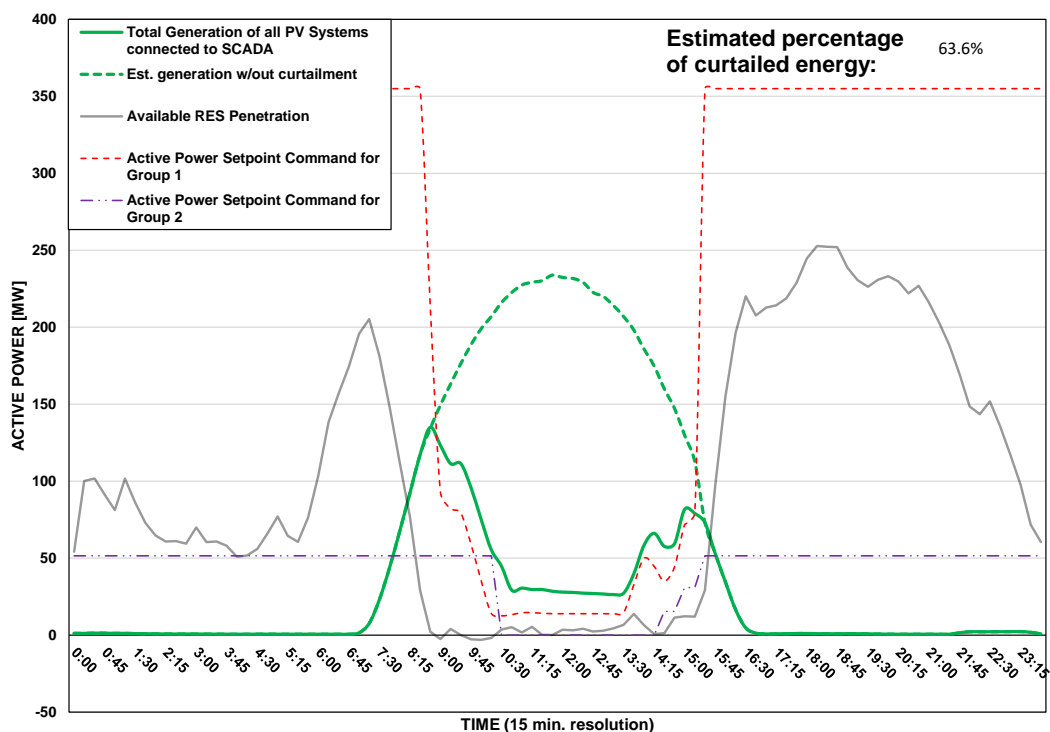
DISTRIBUTION SYSTEM OPERATOR SYSTEM OPERATION



PV Generation Curtailment Report

Date of Curtailment:	18/12/2025	Cut-off of PV Systems using RIPPLE and IoT:
Start of Curtailment (G1 - non Priority)	8:45	
Start of Curtailment (G2 - Priority)	10:30	Cut-off areas using RIPPLE: PAF 1 Cut-off areas using IoT: PV-NIC3, PV-NIC4, PV -ARTICLE 102
End of Curtailment (G1 - non Priority)	15:15	
End of Curtailment (G2 - Priority)	15:15	
Instruction from TSOC	YES	Start of cut-off: 10:45 End of cut-off: 15:30
Reason of Curtailment:	RES-E Generation Restriction due to low loading of the electrical system	
Total Estimated Energy of the day:	1458.5 MWh	Total Est. Energy of the cut-off PV systems using RIPPLE: 30.7MWh
Total Estimated Curtailed Energy:	927.8 MWh	Total Est. Energy of the cut-off PV systems using IoT: 57.9MWh
Percentage of Curtailed Energy:	63.6%	

Scada PVs Generation on 18/12/2025 (curtailment time: 08:45 - 15:15)

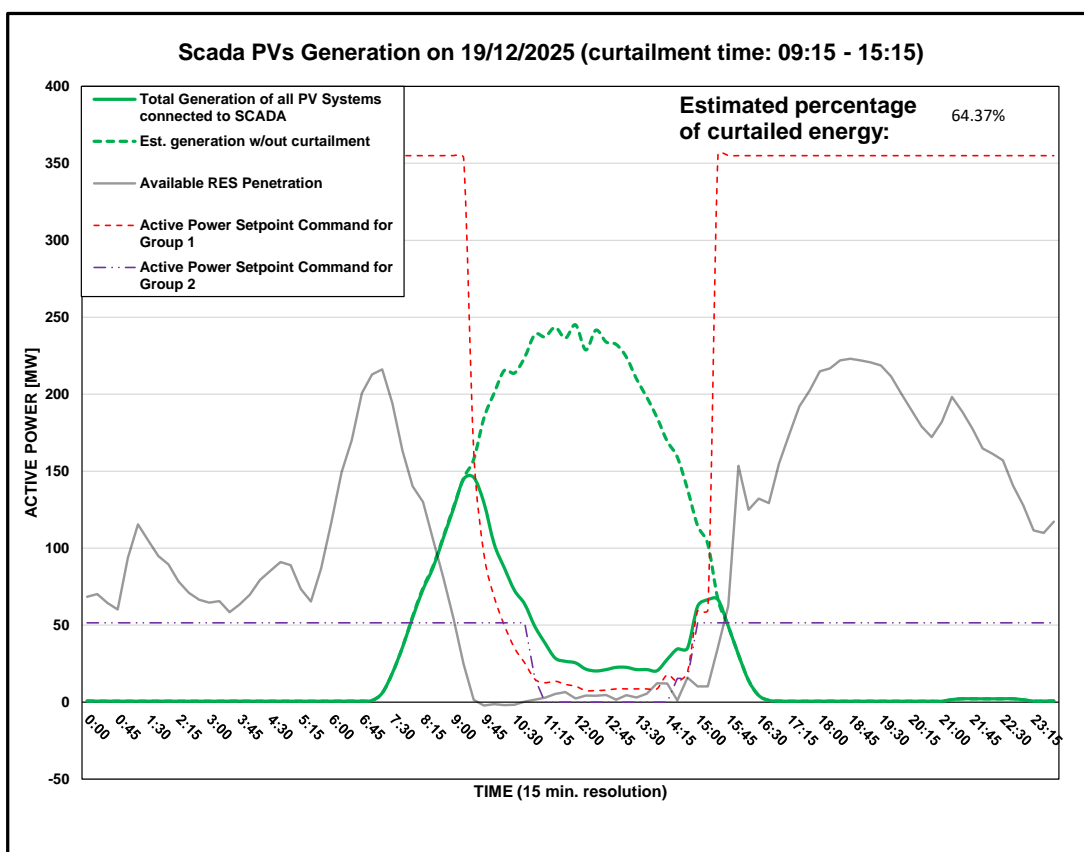


DISTRIBUTION SYSTEM OPERATOR SYSTEM OPERATION



PV Generation Curtailment Report

Date of Curtailment:	19/12/2025	Cut-off of PV Systems using IoT:
Start of Curtailment (G1 - non Priority)	9:15	
Start of Curtailment (G2 - Priority)	11:00	Cut-off areas using IoT: PV -ARTICLE 102
End of Curtailment (G1 - non Priority)	15:15	
End of Curtailment (G2 - Priority)	14:45	
Instruction from TSOC	YES	Start of cut-off: 11:00 End of cut-off: 15:00
Reason of Curtailment:	RES-E Generation Restriction due to low loading of the electrical system	
Total Estimated Energy of the day:	1427 MWh	
Total Estimated Curtailed Energy:	917.4 MWh	Total Est. Energy of the cut-off PV systems using IoT: 9.6MWh
Percentage of Curtailed Energy:	64.37%	



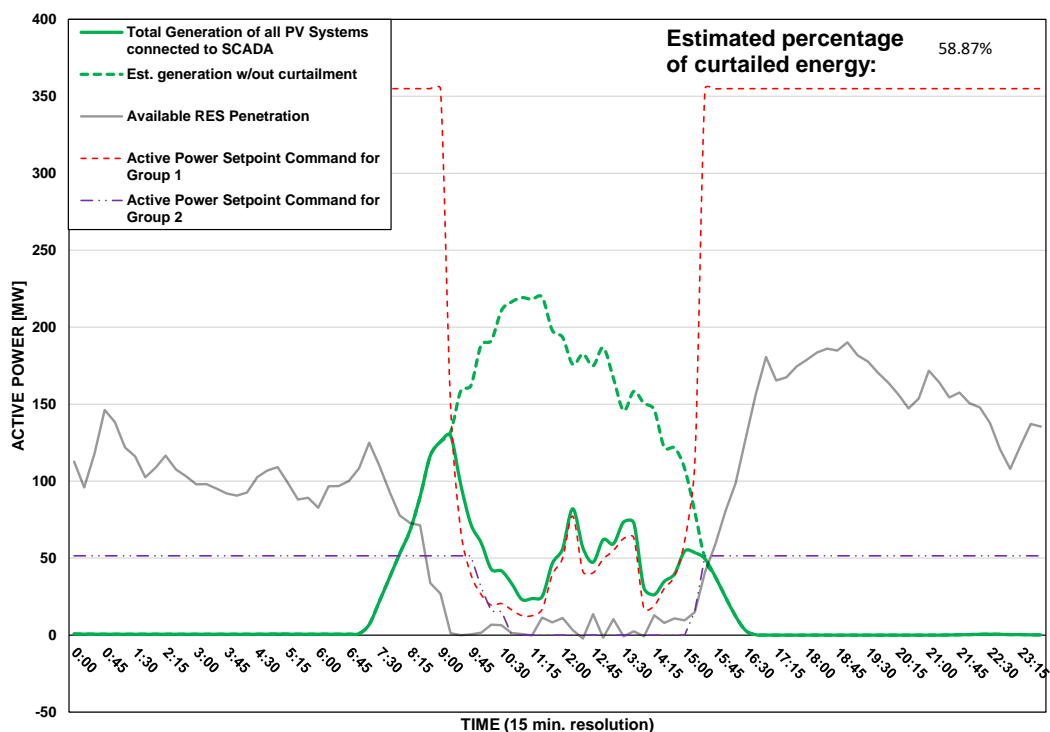
DISTRIBUTION SYSTEM OPERATOR SYSTEM OPERATION



PV Generation Curtailment Report

Date of Curtailment:	20/12/2025	Cut-off of PV Systems using RIPPLE and IoT:
Start of Curtailment (G1 - non Priority)	9:15	Cut-off areas using RIPPLE: NIC 2, LIM 2 Cut-off areas using IoT: PV-NIC1, PV-LCA/FAM2, PV-PAF1, PV -ARTICLE 102
Start of Curtailment (G2 - Priority)	10:00	
End of Curtailment (G1 - non Priority)	15:15	
End of Curtailment (G2 - Priority)	15:15	
Instruction from TSOC	YES	Start of cut-off: 10:15 End of cut-off: 15:30
Reason of Curtailment:	RES-E Generation Restriction due to low loading of the electrical system	
Total Estimated Energy of the day:	1224.4 MWh	Total Est. Energy of the cut-off PV systems using RIPPLE: 40.2MWh
Total Estimated Curtailed Energy:	720.7 MWh	Total Est. Energy of the cut-off PV systems using IoT: 47.6MWh
Percentage of Curtailed Energy:	58.87%	

Scada PVs Generation on 20/12/2025 (curtailment time: 09:15 - 15:15)



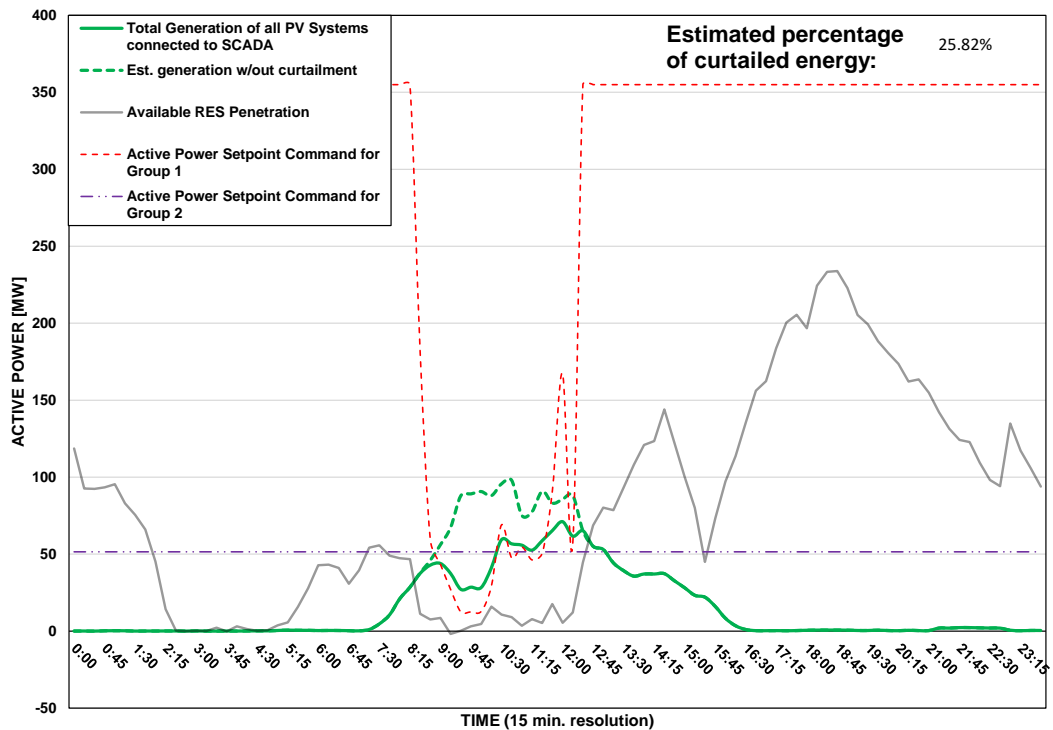
DISTRIBUTION SYSTEM OPERATOR SYSTEM OPERATION



PV Generation Curtailment Report

Date of Curtailment:	21/12/2025
Start of Curtailment (G1 - non Priority)	8:30
Start of Curtailment (G2 - Priority)	
End of Curtailment (G1 - non Priority)	12:15
End of Curtailment (G2 - Priority)	
Instruction from TSOC	YES
Reason of Curtailment:	RES-E Generation Restriction due to low loading of the electrical system
Total Estimated Energy of the day:	473.4 MWh
Total Estimated Curtailed Energy:	122.2 MWh
Percentage of Curtailed Energy:	25.82%

Scada PVs Generation on 21/12/2025 (curtailment time: 08:30 - 12:15)

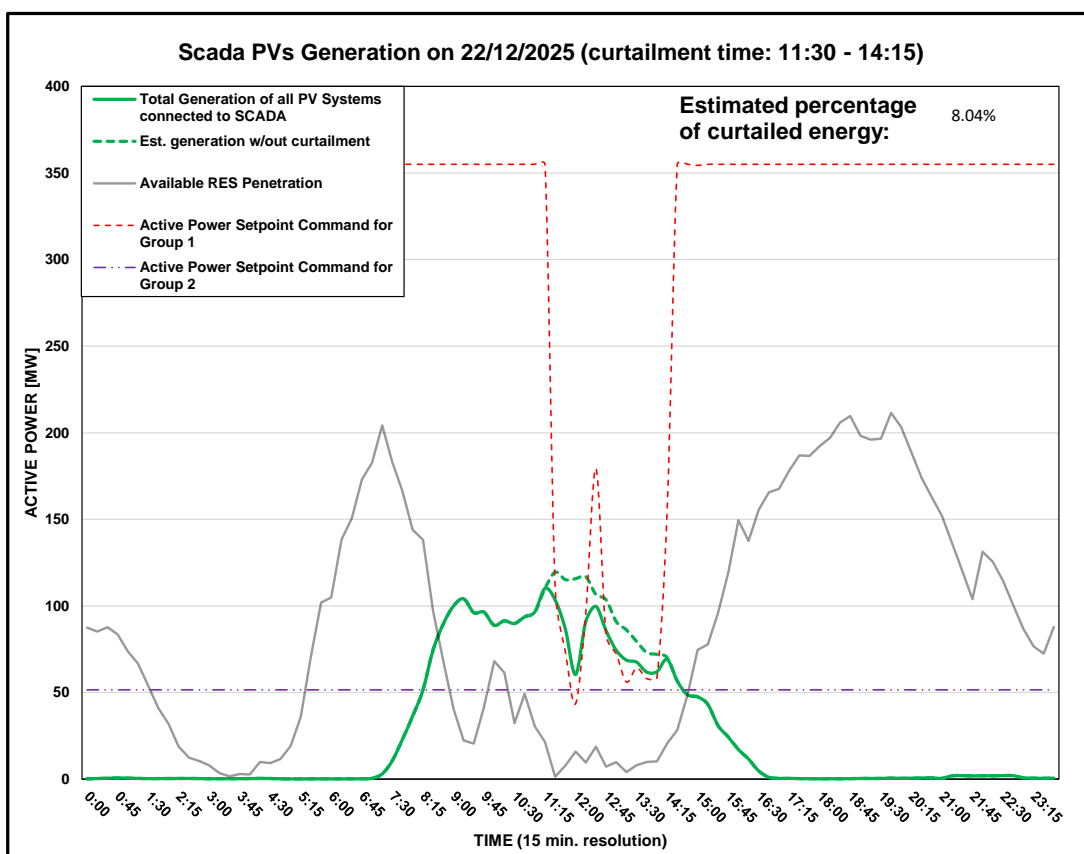


DISTRIBUTION SYSTEM OPERATOR SYSTEM OPERATION



PV Generation Curtailment Report

Date of Curtailment:	22/12/2025
Start of Curtailment (G1 - non Priority)	11:30
Start of Curtailment (G2 - Priority)	
End of Curtailment (G1 - non Priority)	14:15
End of Curtailment (G2 - Priority)	
Instruction from TSOC	YES
Reason of Curtailment:	RES-E Generation Restriction due to low loading of the electrical system
Total Estimated Energy of the day:	680.5 MWh
Total Estimated Curtailed Energy:	54.8 MWh
Percentage of Curtailed Energy:	8.04%



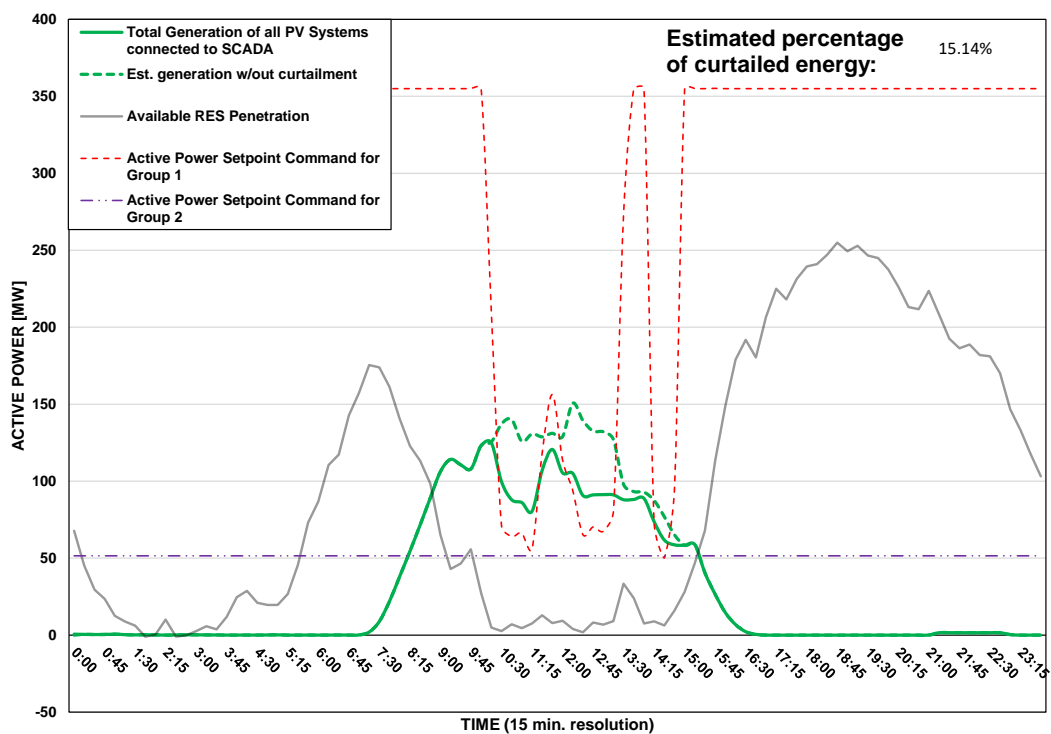
DISTRIBUTION SYSTEM OPERATOR SYSTEM OPERATION



PV Generation Curtailment Report

Date of Curtailment:	23/12/2025
Start of Curtailment (G1 - non Priority)	10:15
Start of Curtailment (G2 - Priority)	
End of Curtailment (G1 - non Priority)	14:45
End of Curtailment (G2 - Priority)	
Instruction from TSOC	YES
Reason of Curtailment:	RES-E Generation Restriction due to low loading of the electrical system
Total Estimated Energy of the day:	829.2 MWh
Total Estimated Curtailed Energy:	125.6 MWh
Percentage of Curtailed Energy:	15.14%

Scada PVs Generation on 23/12/2025 (curtailment time: 10:15 - 14:45)

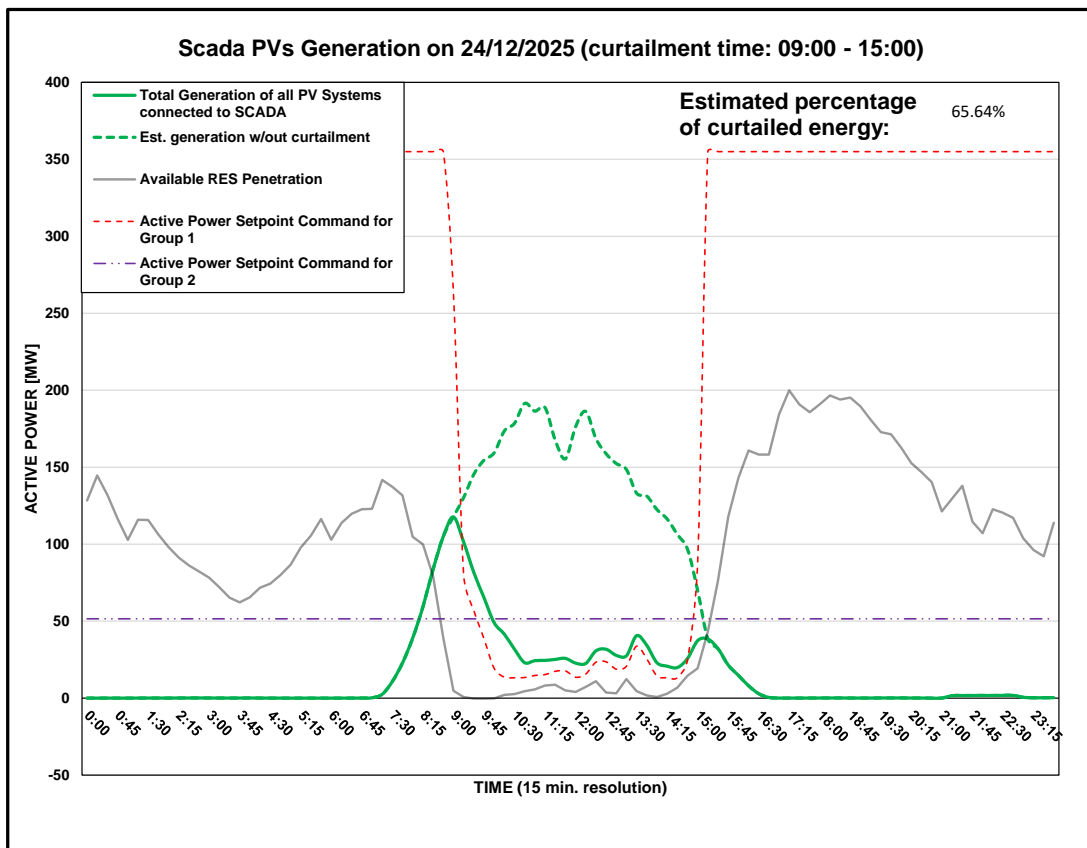


DISTRIBUTION SYSTEM OPERATOR SYSTEM OPERATION



PV Generation Curtailment Report

Date of Curtailment:	24/12/2025	Cut-off of PV Systems using RIPPLE and IoT:
Start of Curtailment (G1 - non Priority)	9:00	Cut-off areas using RIPPLE: PAF 1 Cut-off areas using IoT: PV-LCA/FAM3, PV -ARTICLE 102, PV -PROD 1
Start of Curtailment (G2 - Priority)	10:15	
End of Curtailment (G1 - non Priority)	15:00	
End of Curtailment (G2 - Priority)	15:00	
Instruction from TSOC	YES	Start of cut-off: 10:30 End of cut-off: 15:15
Reason of Curtailment:	RES-E Generation Restriction due to low loading of the electrical system	
Total Estimated Energy of the day:	1043.5 MWh	Total Est. Energy of the cut-off PV systems using RIPPLE: 15.5MWh
Total Estimated Curtailed Energy:	685 MWh	Total Est. Energy of the cut-off PV systems using IoT: 26.1MWh
Percentage of Curtailed Energy:	65.64%	

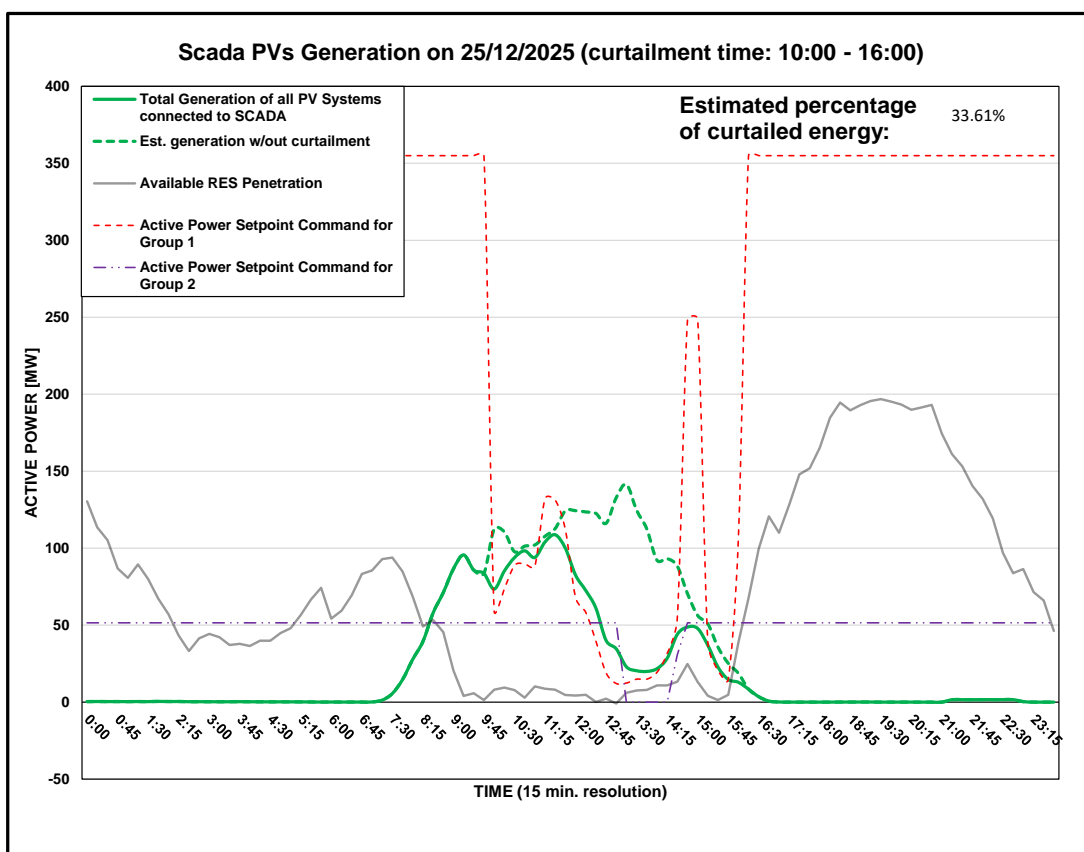


DISTRIBUTION SYSTEM OPERATOR SYSTEM OPERATION



PV Generation Curtailment Report

Date of Curtailment:	25/12/2025	Cut-off of PV Systems using IoT:
Start of Curtailment (G1 - non Priority)	10:00	
Start of Curtailment (G2 - Priority)	13:00	Cut-off areas using IoT: PV -ARTICLE 102
End of Curtailment (G1 - non Priority)	16:00	
End of Curtailment (G2 - Priority)	14:30	
Instruction from TSOC	YES	Start of cut-off: 13:15 End of cut-off: 14:30
Reason of Curtailment:	RES-E Generation Restriction due to low loading of the electrical system	
Total Estimated Energy of the day:	750.1 MWh	
Total Estimated Curtailed Energy:	252.1 MWh	Total Est. Energy of the cut-off PV systems using IoT: 1.6MWh
Percentage of Curtailed Energy:	33.61%	



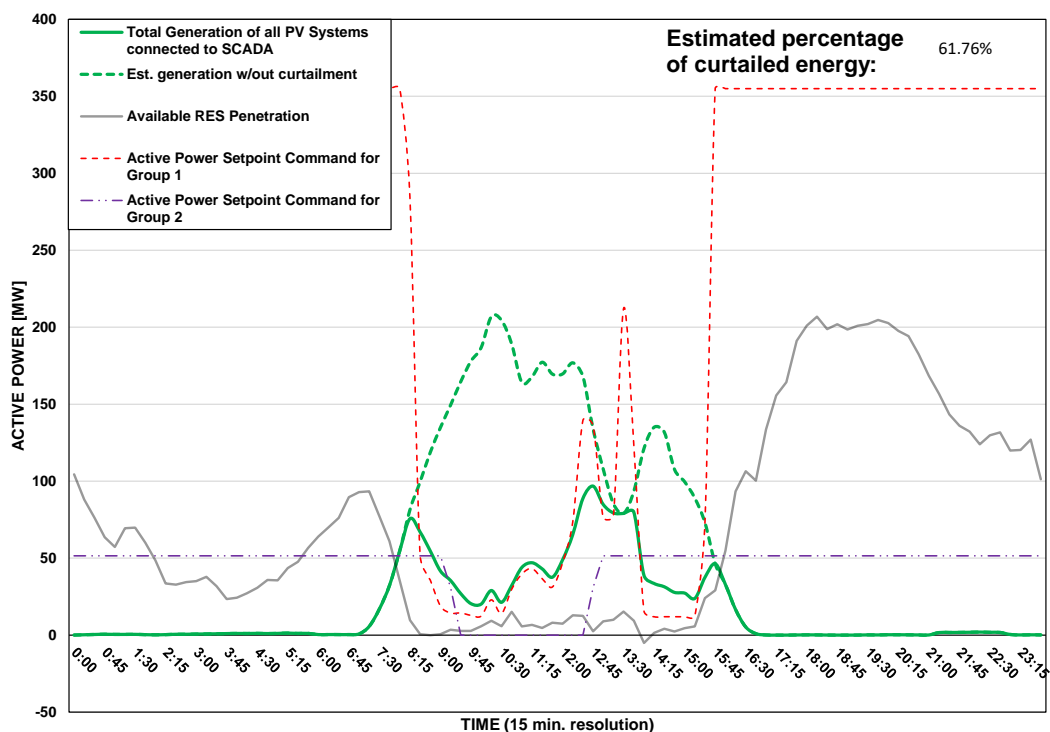
DISTRIBUTION SYSTEM OPERATOR SYSTEM OPERATION



PV Generation Curtailment Report

Date of Curtailment:	26/12/2025	Cut-off of PV Systems using RIPPLE and IoT:
Start of Curtailment (G1 - non Priority)	8:15	
Start of Curtailment (G2 - Priority)	9:15	Cut-off areas using RIPPLE: LAR 1, LAR 2, PAF 2 Cut-off areas using IoT: PV-NIC3, PV-ARTICLE 102
End of Curtailment (G1 - non Priority)	15:30	
End of Curtailment (G2 - Priority)	12:45	
Instruction from TSOC	YES	Start of cut-off: 09:15 End of cut-off: 13:00
Reason of Curtailment:	RES-E Generation Restriction due to low loading of the electrical system	
Total Estimated Energy of the day:	1102.9 MWh	Total Est. Energy of the cut-off PV systems using RIPPLE: 67.4MWh
Total Estimated Curtailed Energy:	681.2 MWh	Total Est. Energy of the cut-off PV systems using IoT: 28.7MWh
Percentage of Curtailed Energy:	61.76%	

Scada PVs Generation on 26/12/2025 (curtailment time: 08:15 - 15:30)



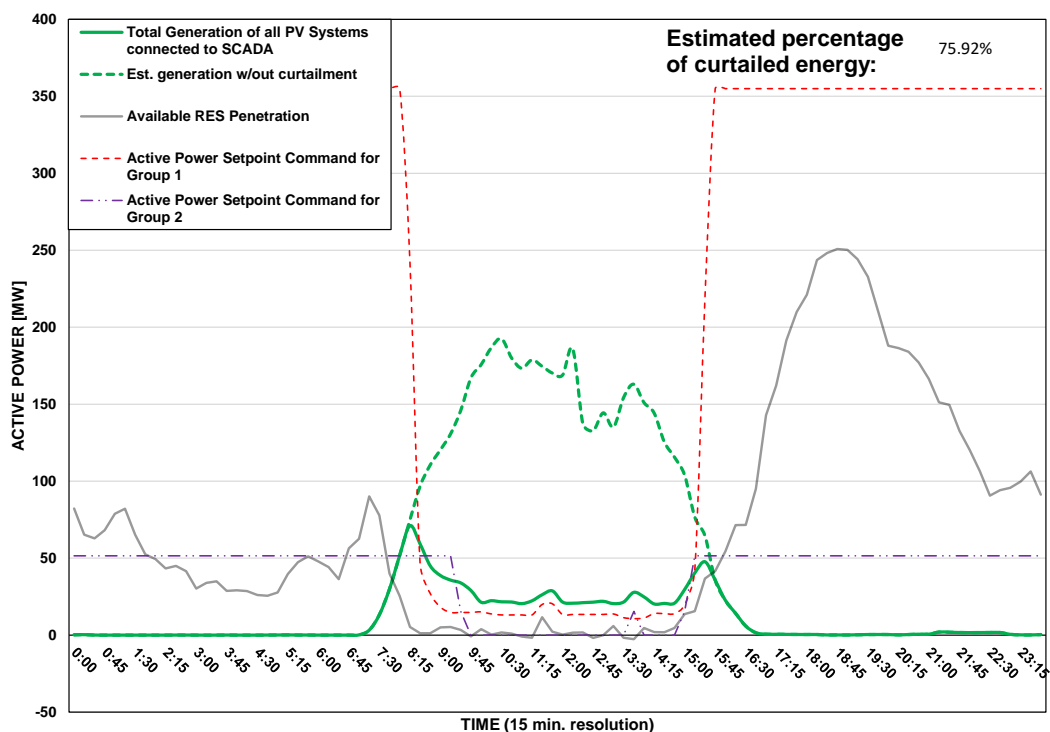
DISTRIBUTION SYSTEM OPERATOR SYSTEM OPERATION



PV Generation Curtailment Report

Date of Curtailment:	27/12/2025	<u>Cut-off of PV Systems using RIPPLE and IoT:</u>
Start of Curtailment (G1 - non Priority)	8:15	
Start of Curtailment (G2 - Priority)	9:30	Cut-off areas using RIPPLE: NIC 1 Cut-off areas using IoT: PV-NIC2, PV-LCA/FAM2, PV-LIM3, PV-PAF3, PV - ARTICLE 102
End of Curtailment (G1 - non Priority)	15:30	
End of Curtailment (G2 - Priority)	15:00	
Instruction from TSOC	YES	Start of cut-off: 09:30 End of cut-off: 15:00
Reason of Curtailment:	RES-E Generation Restriction due to low loading of the electrical system	
Total Estimated Energy of the day:	1120.5 MWh	Total Est. Energy of the cut-off PV systems using RIPPLE: 12MWh
Total Estimated Curtailed Energy:	850.7 MWh	Total Est. Energy of the cut-off PV systems using IoT: 48MWh
Percentage of Curtailed Energy:	75.92%	

Scada PVs Generation on 27/12/2025 (curtailment time: 08:15 - 15:30)

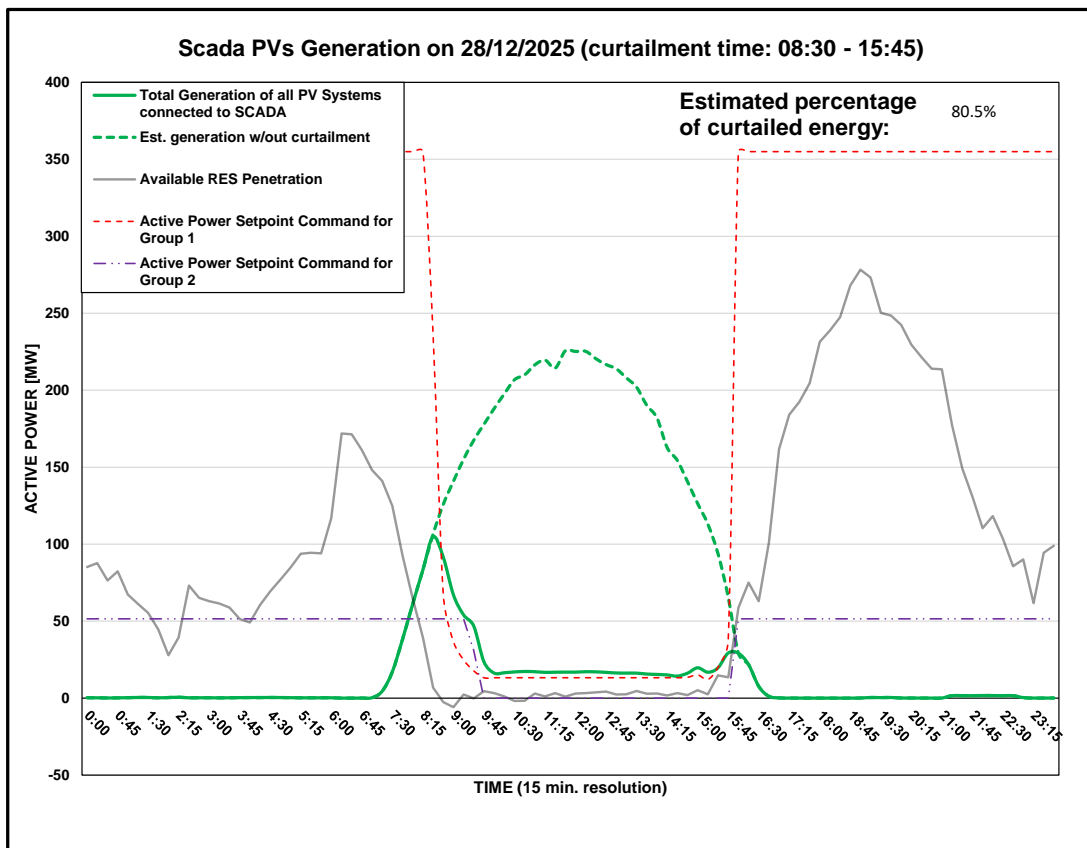


DISTRIBUTION SYSTEM OPERATOR SYSTEM OPERATION



PV Generation Curtailment Report

Date of Curtailment:	28/12/2025	Cut-off of PV Systems using RIPPLE and IoT:
Start of Curtailment (G1 - non Priority)	8:30	
Start of Curtailment (G2 - Priority)	9:30	Cut-off areas using RIPPLE: LAR 2, LIM 1, PAF 2 Cut-off areas using IoT: PV-NIC3, PV-LCA/FAM1, PV-LIM1, PV-PAF1, PV - ARTICLE 102, PV -PROD 1
End of Curtailment (G1 - non Priority)	15:45	
End of Curtailment (G2 - Priority)	15:45	
Instruction from TSOC	YES	Start of cut-off: 09:30 End of cut-off: 16:00
Reason of Curtailment:	RES-E Generation Restriction due to low loading of the electrical system	
Total Estimated Energy of the day:	1395 MWh	Total Est. Energy of the cut-off PV systems using RIPPLE: 140.1MWh
Total Estimated Curtailed Energy:	1122.9 MWh	Total Est. Energy of the cut-off PV systems using IoT: 192.9MWh
Percentage of Curtailed Energy:	80.5%	

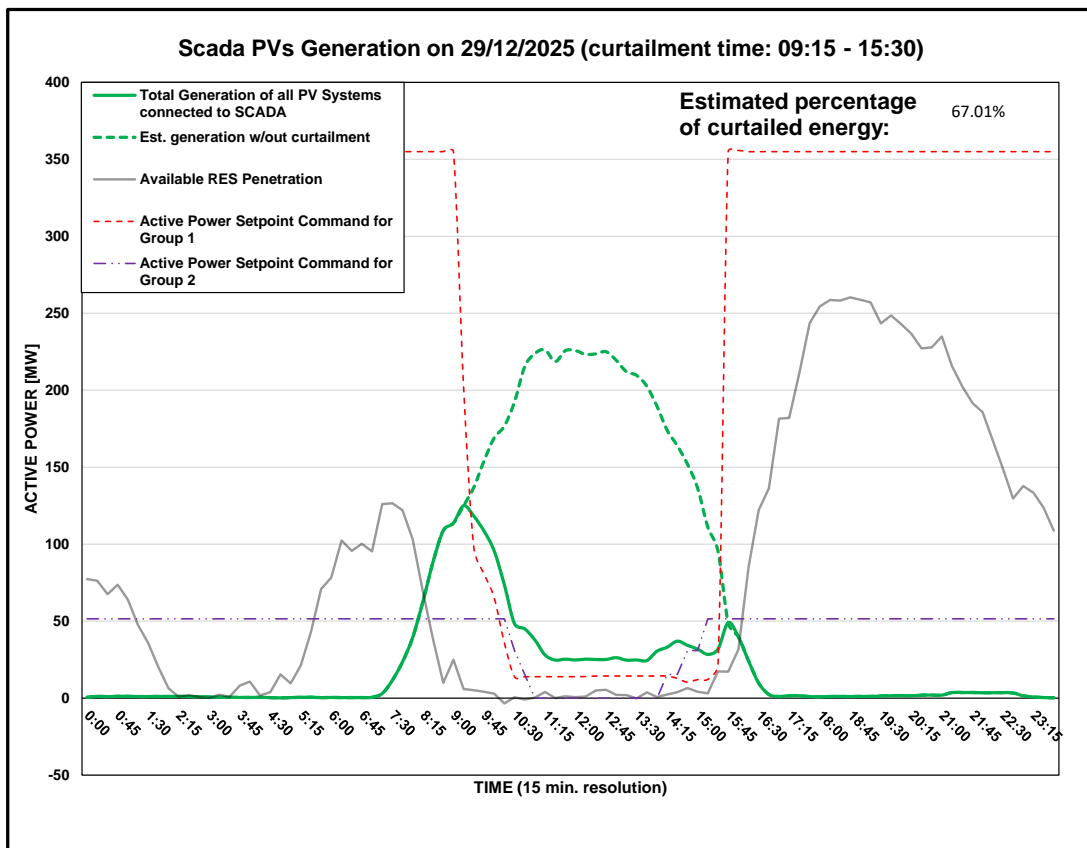


DISTRIBUTION SYSTEM OPERATOR SYSTEM OPERATION



PV Generation Curtailment Report

Date of Curtailment:	29/12/2025	Cut-off of PV Systems using IoT:
Start of Curtailment (G1 - non Priority)	9:15	Cut-off areas using IoT: PV-PAF3, PV -ARTICLE 102
Start of Curtailment (G2 - Priority)	10:15	
End of Curtailment (G1 - non Priority)	15:30	
End of Curtailment (G2 - Priority)	15:00	
Instruction from TSOC	YES	Start of cut-off: 10:30 End of cut-off: 15:00
Reason of Curtailment:	RES-E Generation Restriction due to low loading of the electrical system	
Total Estimated Energy of the day:	1369.1 MWh	
Total Estimated Curtailed Energy:	917.4 MWh	Total Est. Energy of the cut-off PV systems using IoT: 17.6MWh
Percentage of Curtailed Energy:	67.01%	



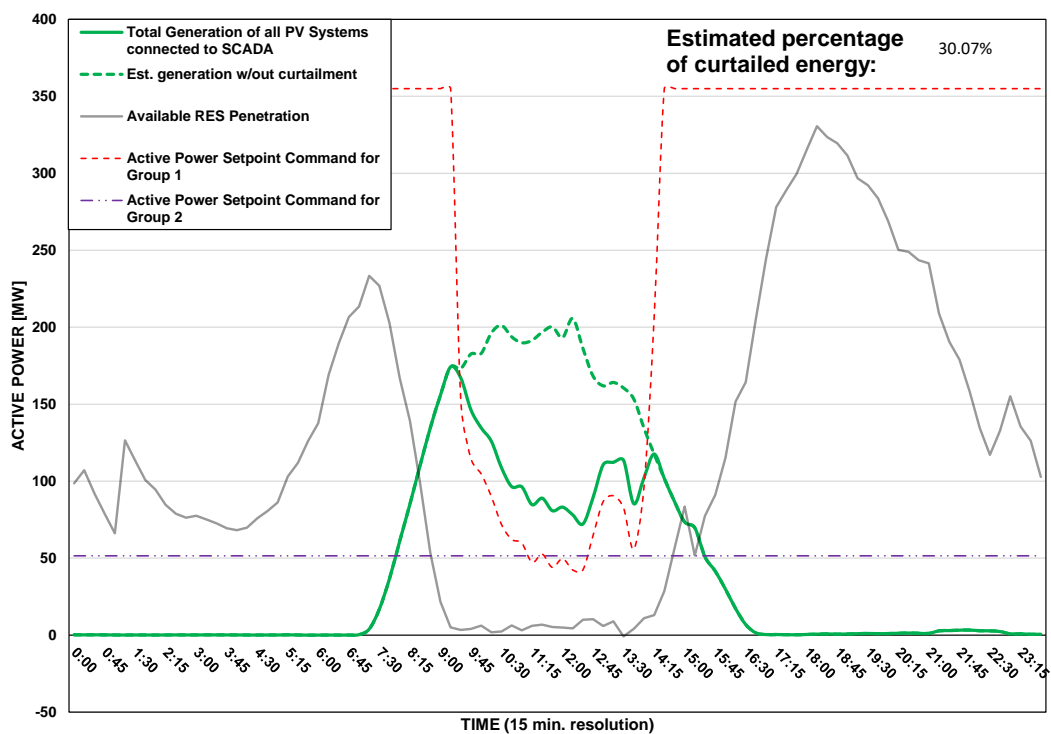
DISTRIBUTION SYSTEM OPERATOR SYSTEM OPERATION



PV Generation Curtailment Report

Date of Curtailment:	30/12/2025
Start of Curtailment (G1 - non Priority)	9:15
Start of Curtailment (G2 - Priority)	
End of Curtailment (G1 - non Priority)	14:15
End of Curtailment (G2 - Priority)	
Instruction from TSOC	YES
Reason of Curtailment:	RES-E Generation Restriction due to low loading of the electrical system
Total Estimated Energy of the day:	1213.3 MWh
Total Estimated Curtailed Energy:	364.8 MWh
Percentage of Curtailed Energy:	30.07%

Scada PVs Generation on 30/12/2025 (curtailment time: 09:15 - 14:15)



DISTRIBUTION SYSTEM OPERATOR SYSTEM OPERATION



PV Generation Curtailment Report

Date of Curtailment:	31/12/2025
Start of Curtailment (G1 - non Priority)	10:15
Start of Curtailment (G2 - Priority)	12:00
End of Curtailment (G1 - non Priority)	14:00
End of Curtailment (G2 - Priority)	12:15
Instruction from TSOC	YES
Reason of Curtailment:	RES-E Generation Restriction due to low loading of the electrical system
Total Estimated Energy of the day:	596.2 MWh
Total Estimated Curtailed Energy:	167.1 MWh
Percentage of Curtailed Energy:	28.05%

