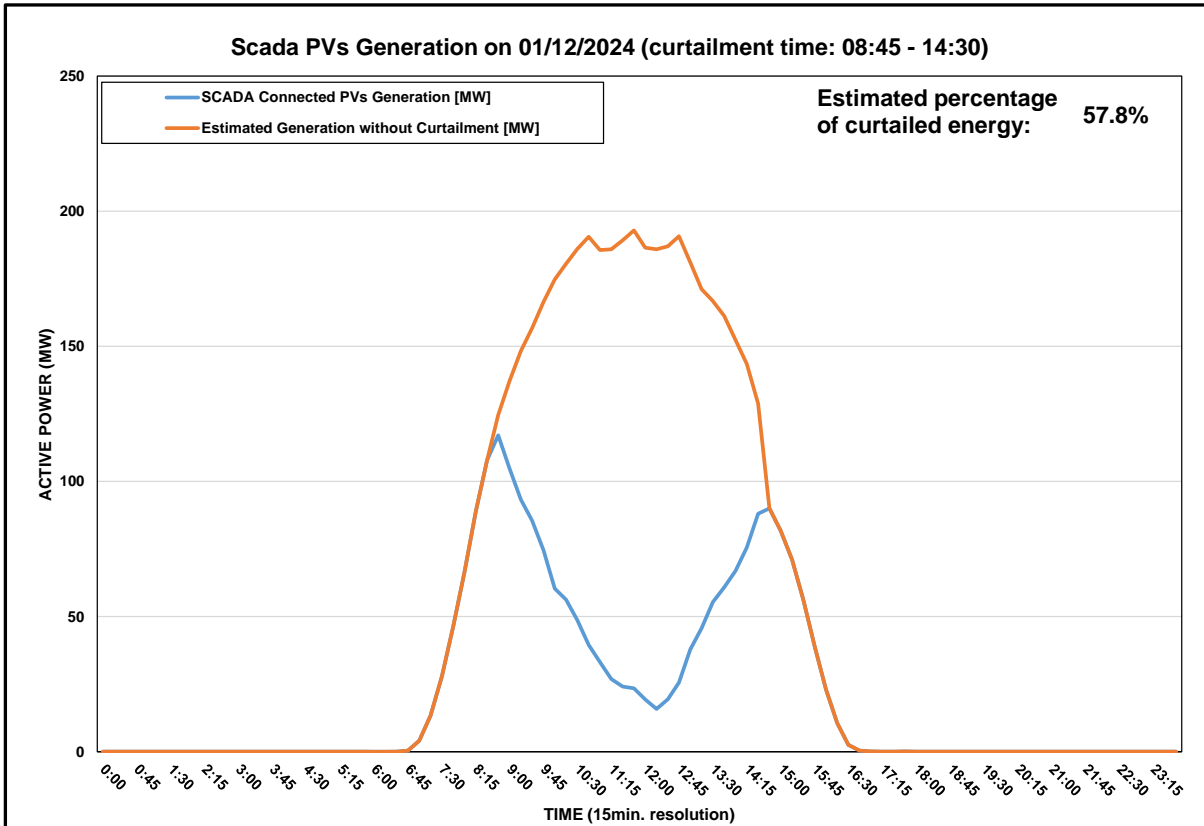


# DISTRIBUTION SYSTEM OPERATOR SYSTEM OPERATION



## Daily Curtailment Report of PV Generation

Date of Curtailment	01/12/2024
Start of Curtailment	8:45
End of Curtailment	14:30
Instruction from TSOC	YES
Reason of Curtailment	RES-E Generation Restriction due to low loading of the electrical system
Total Estimated Energy of the day:	1201.5 MWh
Total Estimated Curtailed Energy:	693.9 MWh
Percentage of Curtailed Energy	57.8%

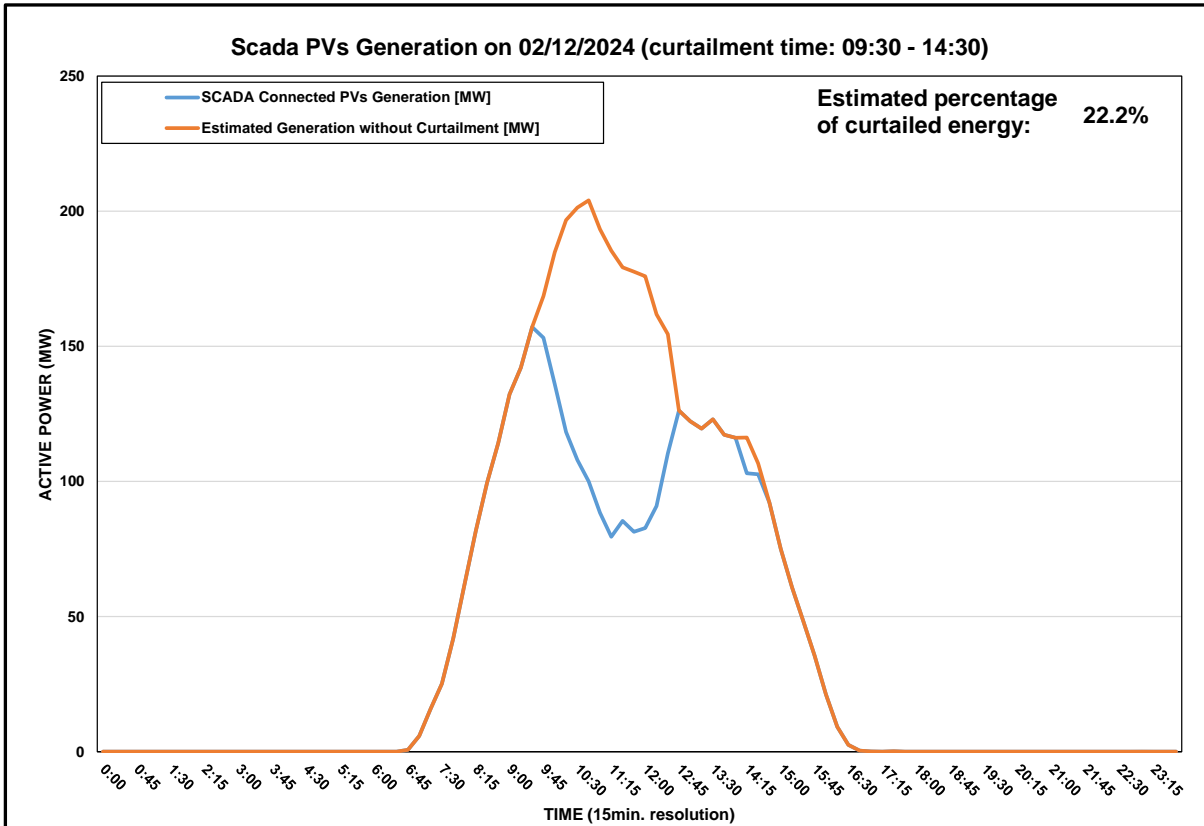


# DISTRIBUTION SYSTEM OPERATOR SYSTEM OPERATION



## Daily Curtailment Report of PV Generation

<b>Date of Curtailment</b>	02/12/2024
<b>Start of Curtailment</b>	9:30
<b>End of Curtailment</b>	14:30
<b>Instruction from TSOC</b>	YES
<b>Reason of Curtailment</b>	RES-E Generation Restriction due to low loading of the electrical system
<b>Total Estimated Energy of the day:</b>	1089.1 MWh
<b>Total Estimated Curtailed Energy:</b>	241.5 MWh
<b>Percentage of Curtailed Energy</b>	22.2%

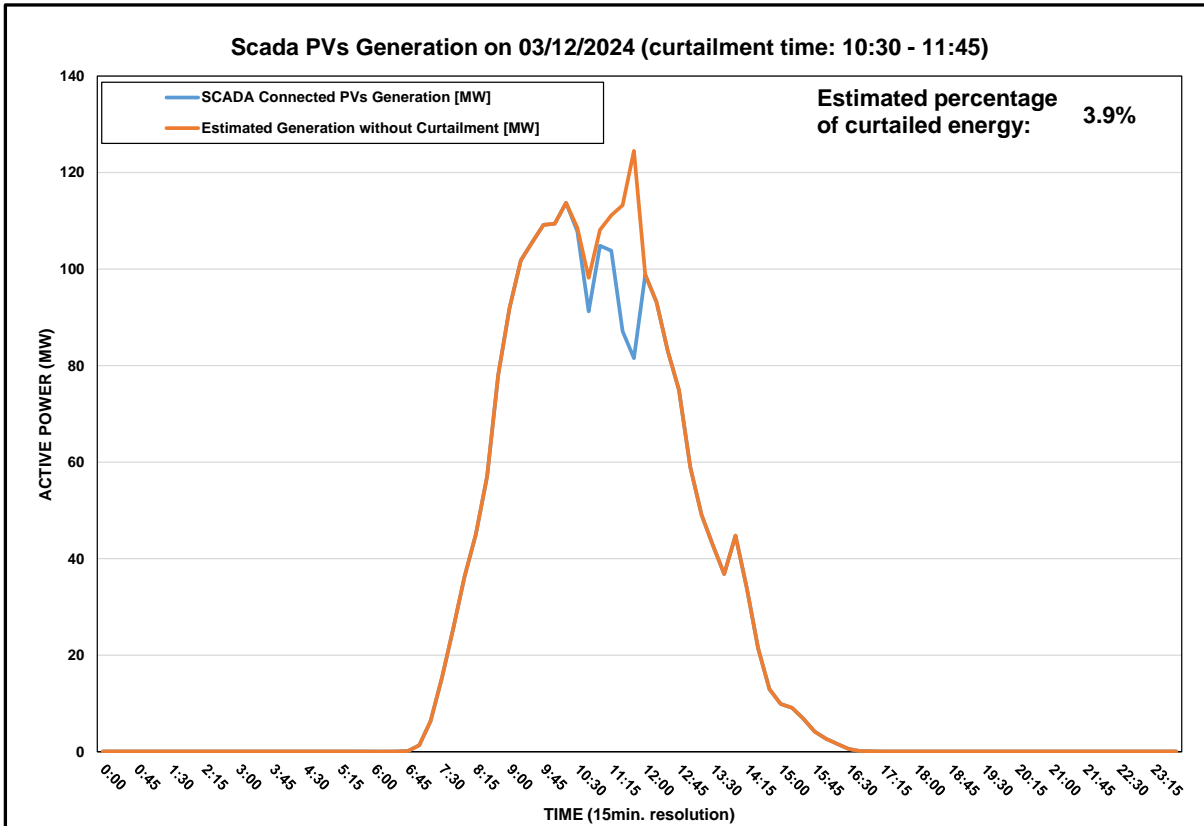


# DISTRIBUTION SYSTEM OPERATOR SYSTEM OPERATION



## Daily Curtailment Report of PV Generation

Date of Curtailment	03/12/2024
Start of Curtailment	10:30
End of Curtailment	11:45
Instruction from TSOC	YES
Reason of Curtailment	RES-E Generation Restriction due to low loading of the electrical system
Total Estimated Energy of the day:	562.1 MWh
Total Estimated Curtailed Energy:	21.8 MWh
Percentage of Curtailed Energy	3.9%



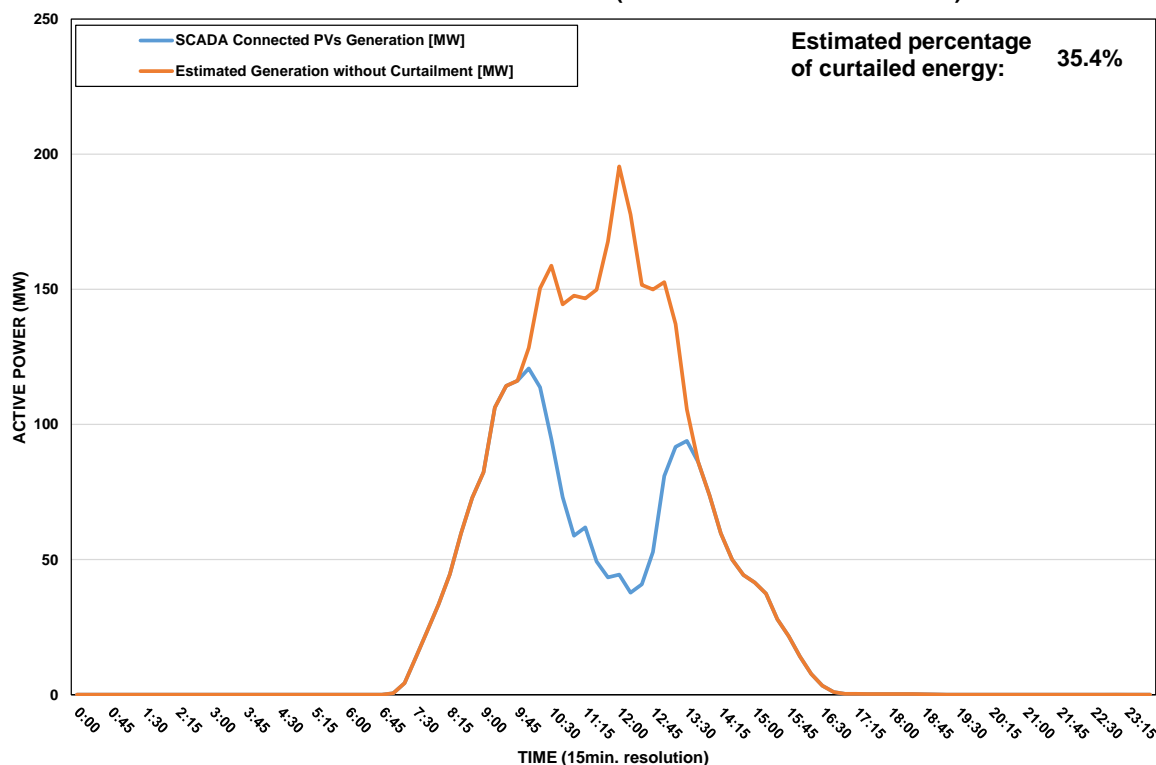
# DISTRIBUTION SYSTEM OPERATOR SYSTEM OPERATION



## Daily Curtailment Report of PV Generation

<b>Date of Curtailment</b>	04/12/2024
<b>Start of Curtailment</b>	10:00
<b>End of Curtailment</b>	13:30
<b>Instruction from TSOC</b>	YES
<b>Reason of Curtailment</b>	RES-E Generation Restriction due to low loading of the electrical system
<b>Total Estimated Energy of the day:</b>	852 MWh
<b>Total Estimated Curtailed Energy:</b>	301.5 MWh
<b>Percentage of Curtailed Energy</b>	35.4%

**Scada PVs Generation on 04/12/2024 (curtailment time: 10:00 - 13:30)**

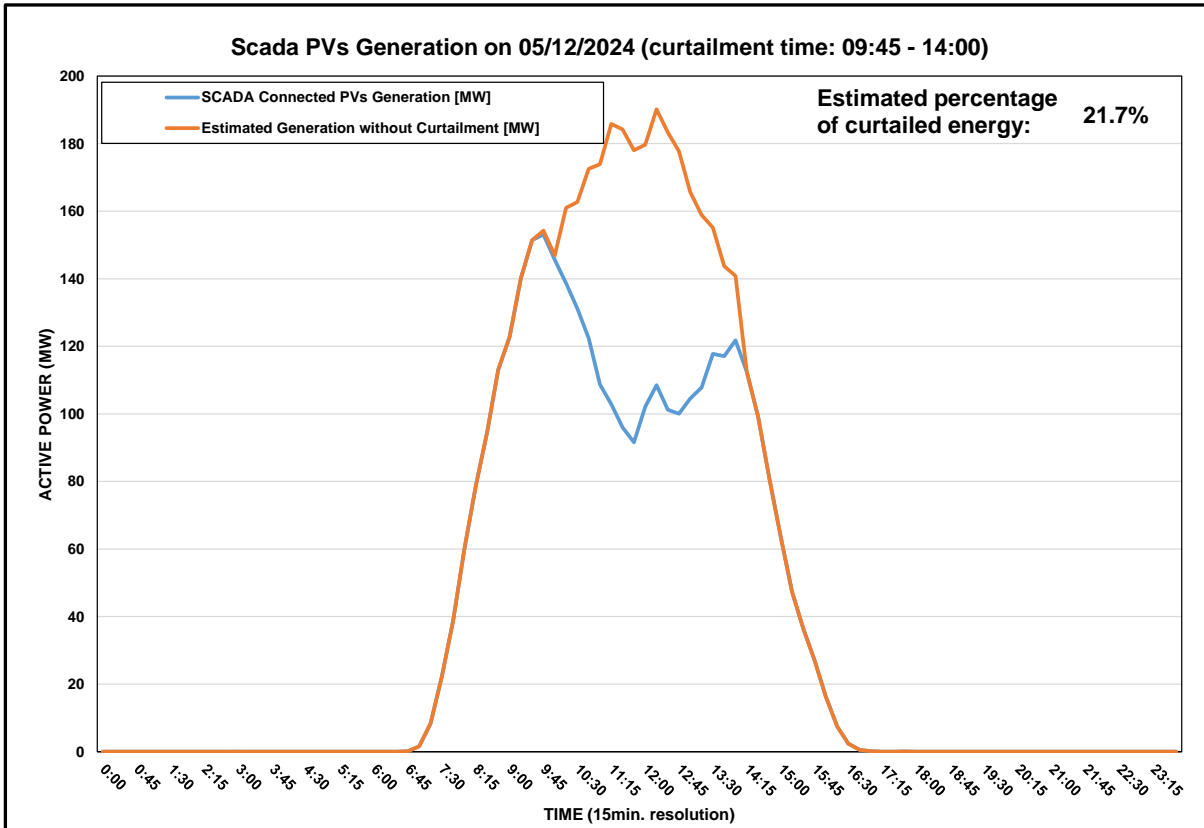


# DISTRIBUTION SYSTEM OPERATOR SYSTEM OPERATION



## Daily Curtailment Report of PV Generation

Date of Curtailment	05/12/2024
Start of Curtailment	9:45
End of Curtailment	14:00
Instruction from TSOC	YES
Reason of Curtailment	RES-E Generation Restriction due to low loading of the electrical system
Total Estimated Energy of the day:	1085.5 MWh
Total Estimated Curtailed Energy:	235.9 MWh
Percentage of Curtailed Energy	21.7%

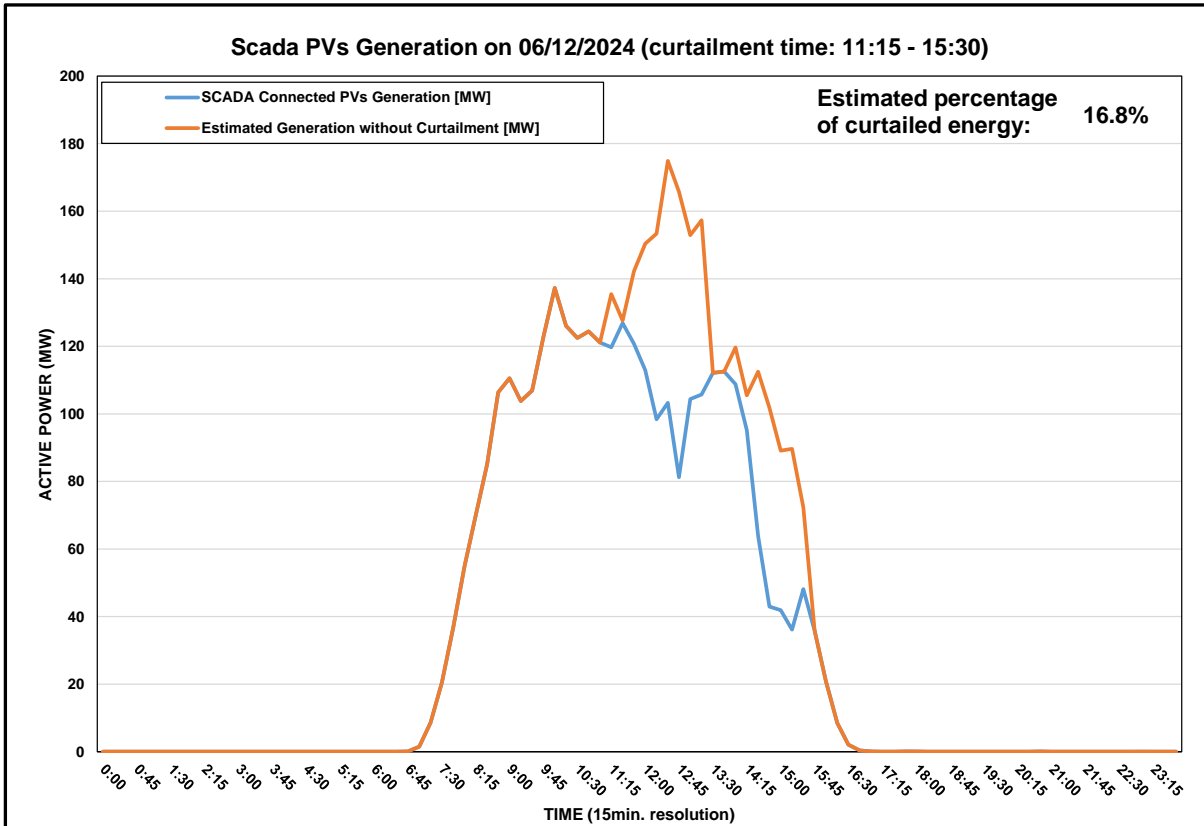


# DISTRIBUTION SYSTEM OPERATOR SYSTEM OPERATION



## Daily Curtailment Report of PV Generation

Date of Curtailment	06/12/2024
Start of Curtailment	11:15
End of Curtailment	15:30
Instruction from TSOC	YES
Reason of Curtailment	RES-E Generation Restriction due to low loading of the electrical system
Total Estimated Energy of the day:	951 MWh
Total Estimated Curtailed Energy:	160 MWh
Percentage of Curtailed Energy	16.8%

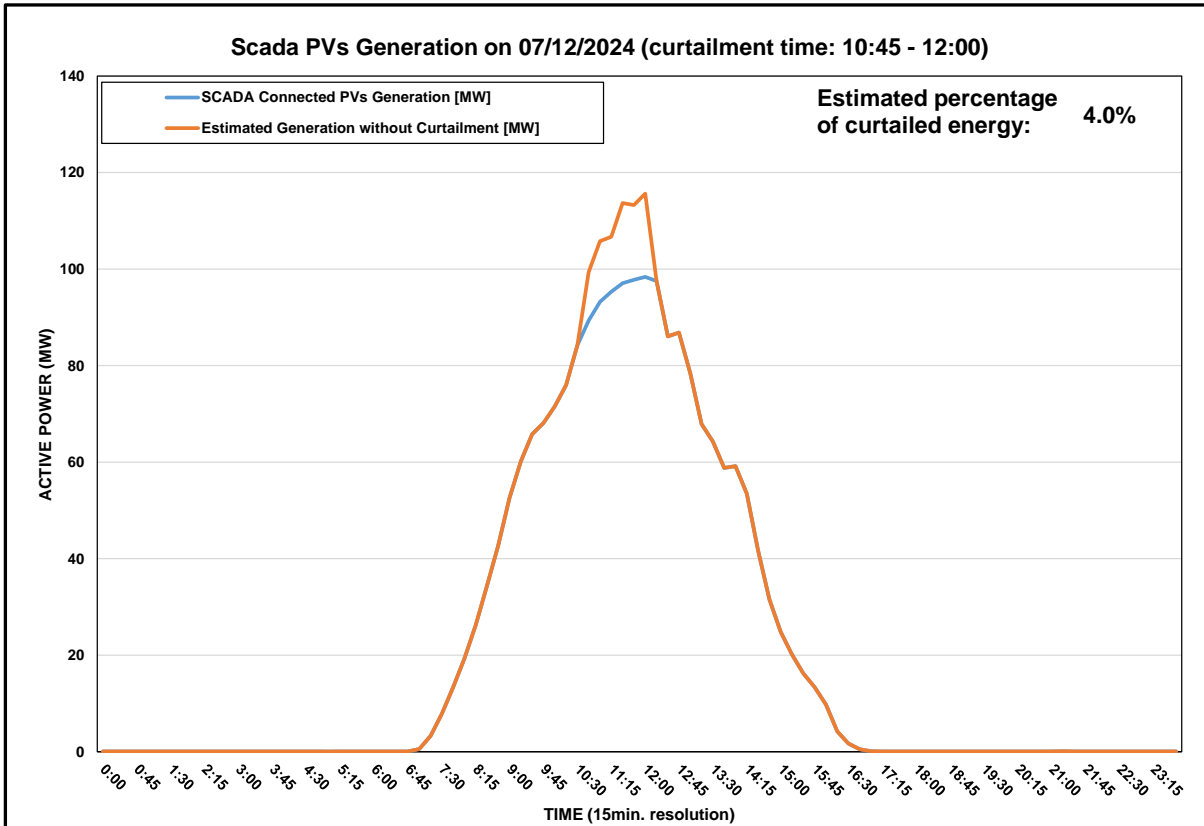


# DISTRIBUTION SYSTEM OPERATOR SYSTEM OPERATION



## Daily Curtailment Report of PV Generation

<b>Date of Curtailment</b>	07/12/2024
<b>Start of Curtailment</b>	10:45
<b>End of Curtailment</b>	12:00
<b>Instruction from TSOC</b>	YES
<b>Reason of Curtailment</b>	RES-E Generation Restriction due to low loading of the electrical system
<b>Total Estimated Energy of the day:</b>	524.9 MWh
<b>Total Estimated Curtailed Energy:</b>	20.8 MWh
<b>Percentage of Curtailed Energy</b>	4.0%



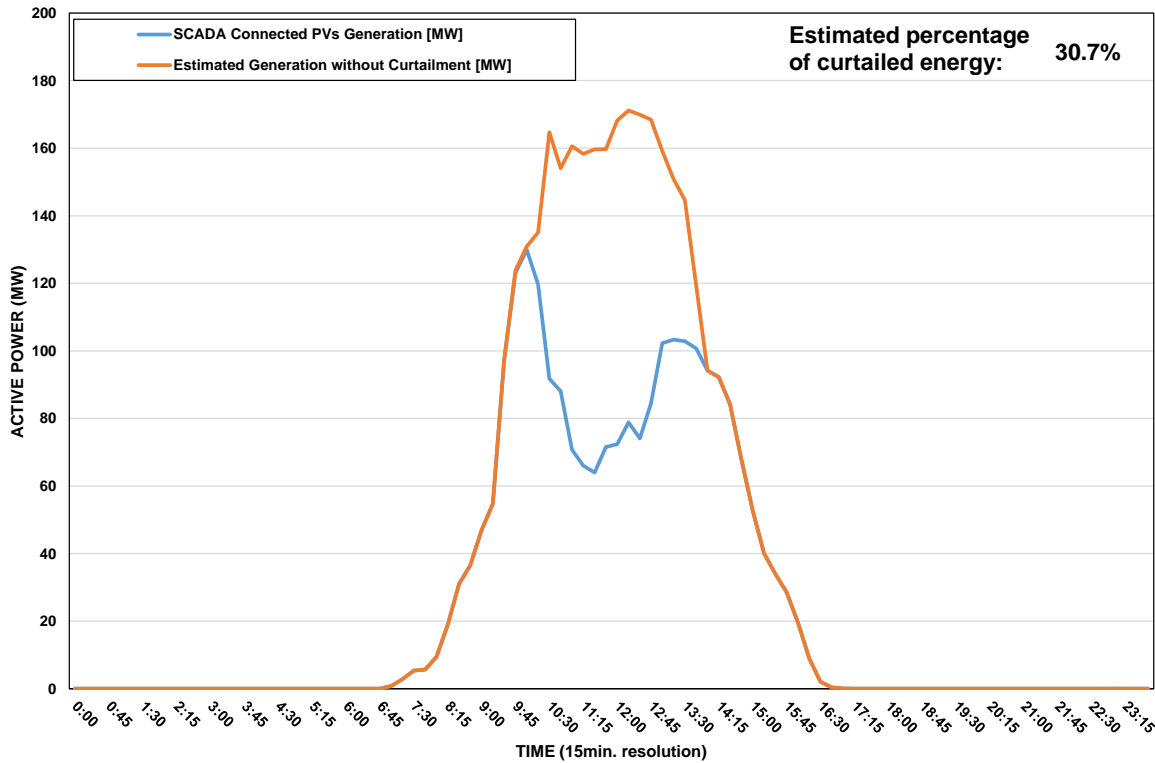
# DISTRIBUTION SYSTEM OPERATOR SYSTEM OPERATION



## Daily Curtailment Report of PV Generation

Date of Curtailment	08/12/2024
Start of Curtailment	9:45
End of Curtailment	13:45
Instruction from TSOC	YES
Reason of Curtailment	RES-E Generation Restriction due to low loading of the electrical system
Total Estimated Energy of the day:	858.7 MWh
Total Estimated Curtailed Energy:	263.7 MWh
Percentage of Curtailed Energy	30.7%

**Scada PVs Generation on 08/12/2024 (curtailment time: 09:45 - 13:45)**





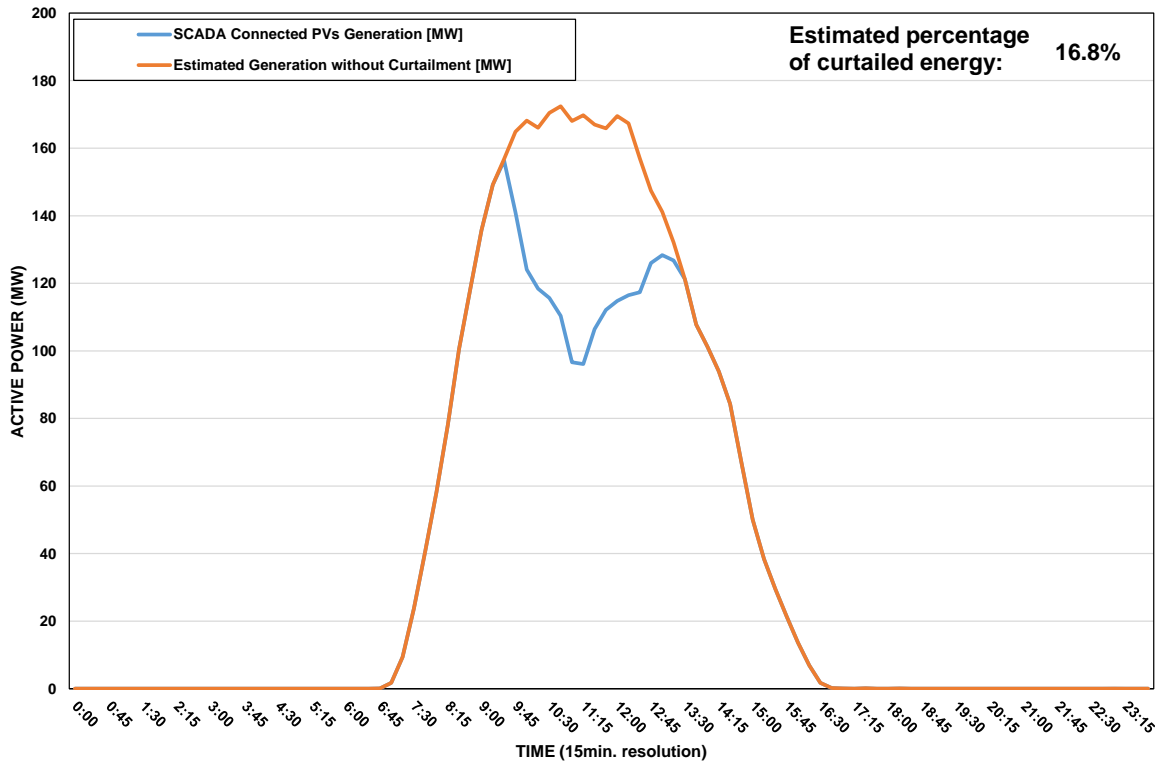
# DISTRIBUTION SYSTEM OPERATOR SYSTEM OPERATION



## Daily Curtailment Report of PV Generation

<b>Date of Curtailment</b>	09/12/2024
<b>Start of Curtailment</b>	9:30
<b>End of Curtailment</b>	13:15
<b>Instruction from TSOC</b>	YES
<b>Reason of Curtailment</b>	RES-E Generation Restriction due to low loading of the electrical system
<b>Total Estimated Energy of the day:</b>	1009.7 MWh
<b>Total Estimated Curtailed Energy:</b>	169.2 MWh
<b>Percentage of Curtailed Energy</b>	16.8%

**Scada PVs Generation on 09/12/2024 (curtailment time: 09:30 - 13:15)**

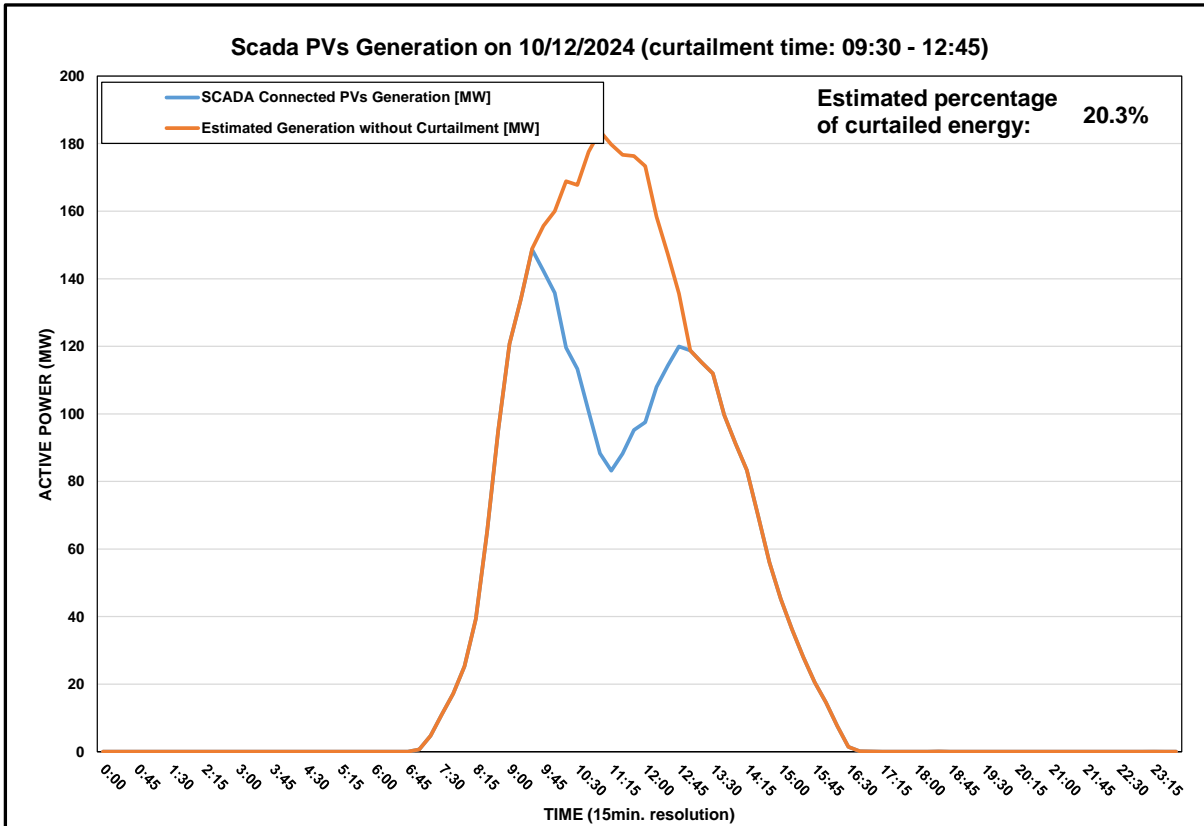


# DISTRIBUTION SYSTEM OPERATOR SYSTEM OPERATION



## Daily Curtailment Report of PV Generation

<b>Date of Curtailment</b>	10/12/2024
<b>Start of Curtailment</b>	9:30
<b>End of Curtailment</b>	12:45
<b>Instruction from TSOC</b>	YES
<b>Reason of Curtailment</b>	RES-E Generation Restriction due to low loading of the electrical system
<b>Total Estimated Energy of the day:</b>	931.3 MWh
<b>Total Estimated Curtailed Energy:</b>	188.7 MWh
<b>Percentage of Curtailed Energy</b>	20.3%

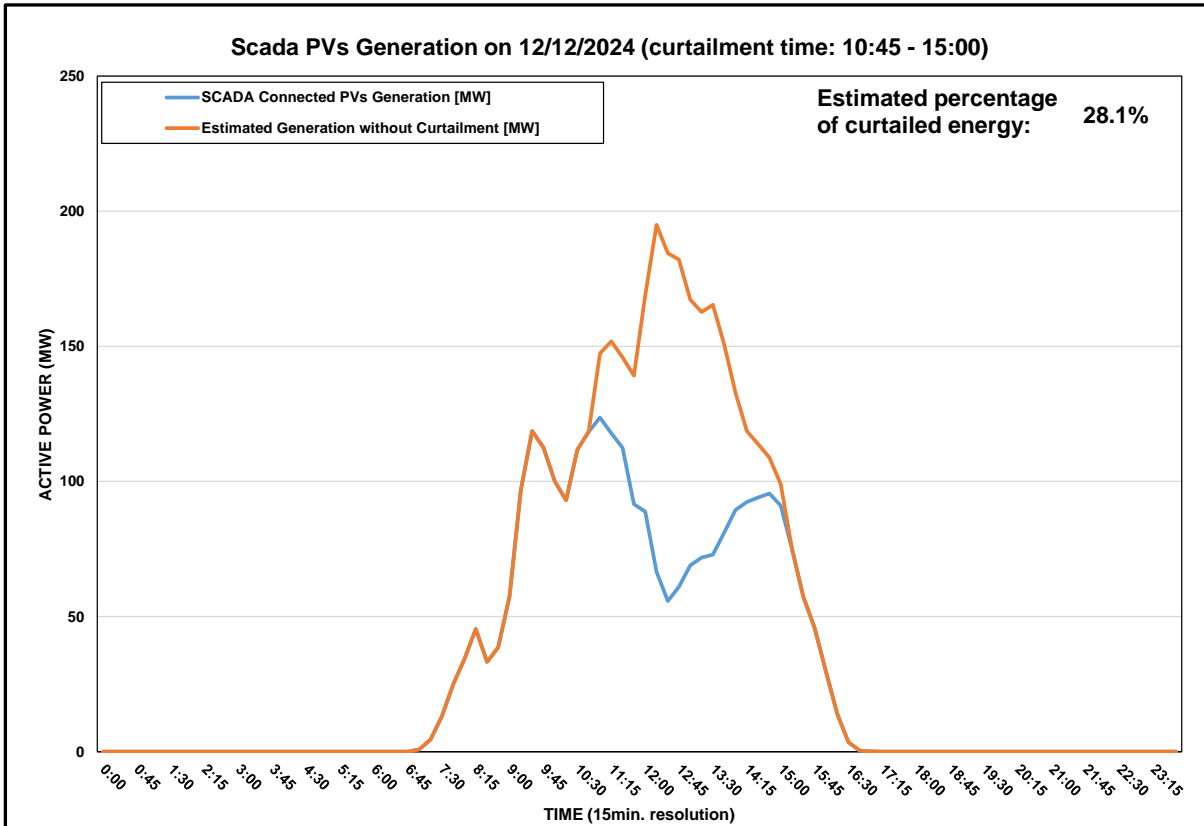


# DISTRIBUTION SYSTEM OPERATOR SYSTEM OPERATION



## Daily Curtailment Report of PV Generation

Date of Curtailment	12/12/2024
Start of Curtailment	10:45
End of Curtailment	15:00
Instruction from TSOC	YES
Reason of Curtailment	RES-E Generation Restriction due to low loading of the electrical system
Total Estimated Energy of the day:	941.4 MWh
Total Estimated Curtailed Energy:	264.7 MWh
Percentage of Curtailed Energy	28.1%

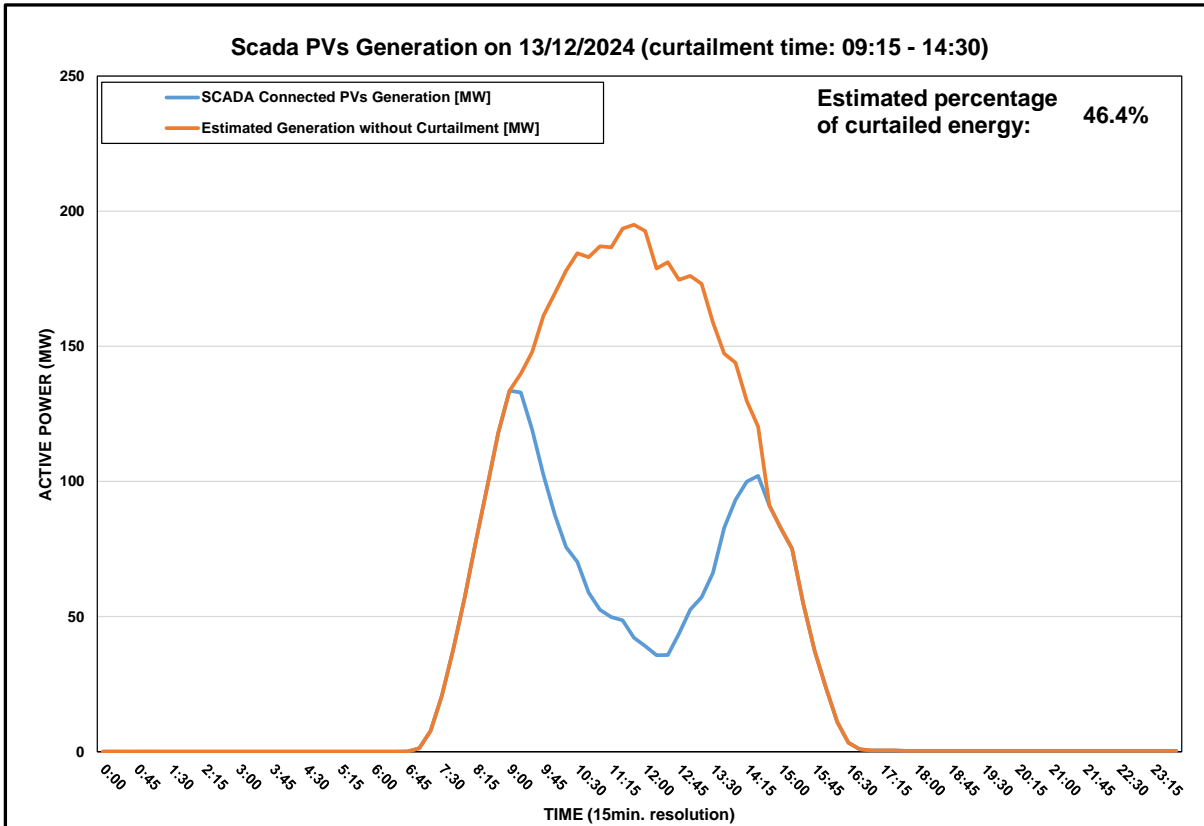


# DISTRIBUTION SYSTEM OPERATOR SYSTEM OPERATION



## Daily Curtailment Report of PV Generation

Date of Curtailment	13/12/2024
Start of Curtailment	9:15
End of Curtailment	14:30
Instruction from TSOC	YES
Reason of Curtailment	RES-E Generation Restriction due to low loading of the electrical system
Total Estimated Energy of the day:	1160.8 MWh
Total Estimated Curtailed Energy:	538.6 MWh
Percentage of Curtailed Energy	46.4%

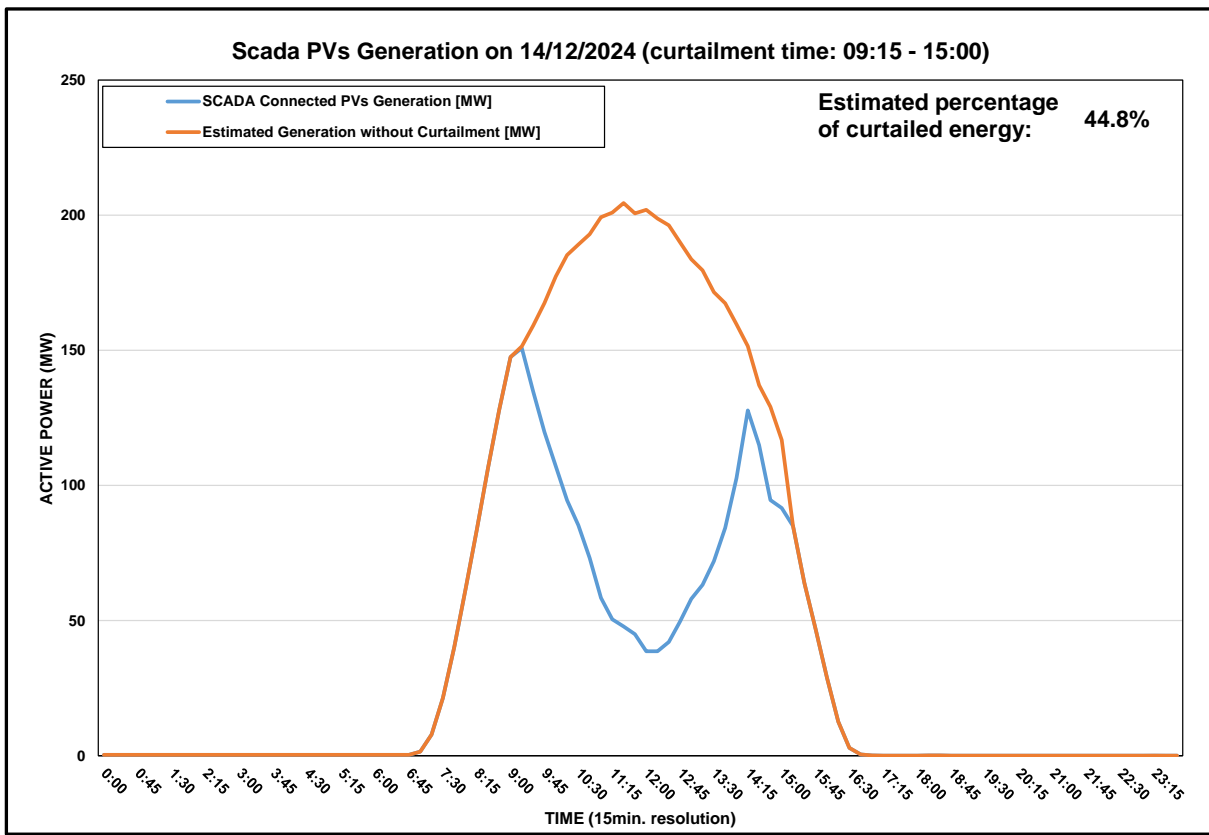


# DISTRIBUTION SYSTEM OPERATOR SYSTEM OPERATION



## Daily Curtailment Report of PV Generation

Date of Curtailment	14/12/2024
Start of Curtailment	9:15
End of Curtailment	15:00
Instruction from TSOC	YES
Reason of Curtailment	RES-E Generation Restriction due to low loading of the electrical system
Total Estimated Energy of the day:	1265.1 MWh
Total Estimated Curtailed Energy:	566.6 MWh
Percentage of Curtailed Energy	44.8%



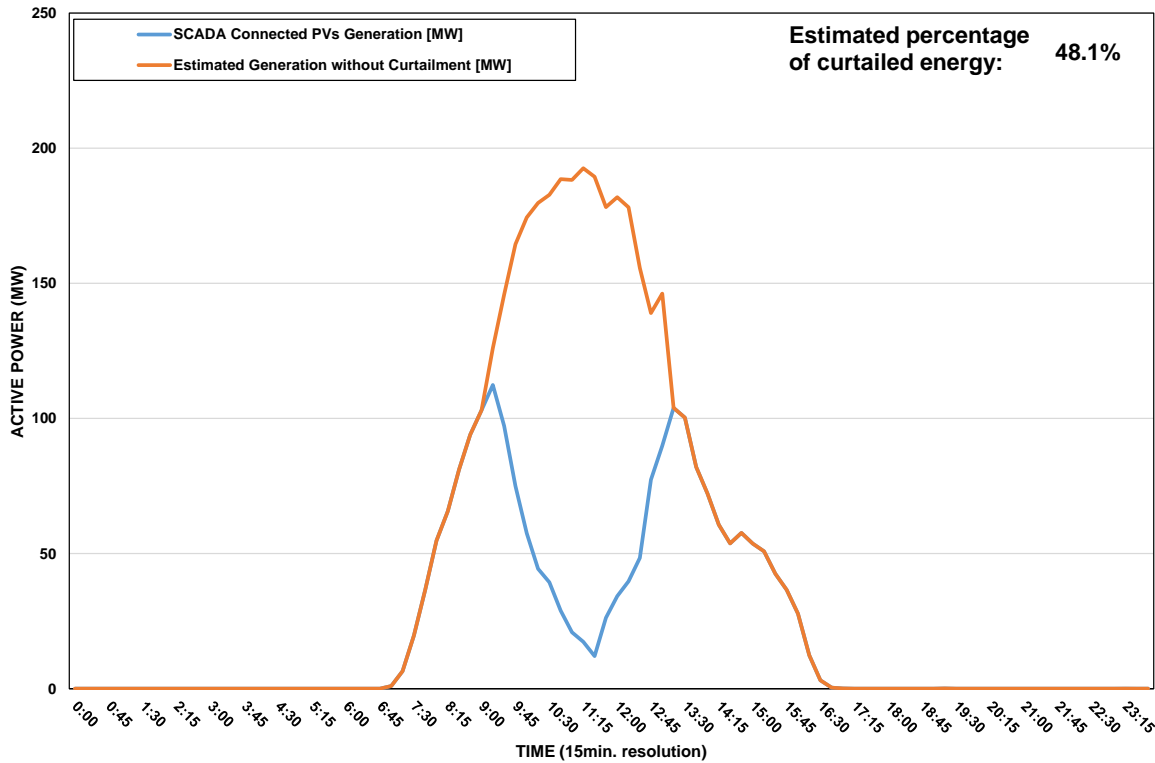
# DISTRIBUTION SYSTEM OPERATOR SYSTEM OPERATION



## Daily Curtailment Report of PV Generation

<b>Date of Curtailment</b>	15/12/2024
<b>Start of Curtailment</b>	9:15
<b>End of Curtailment</b>	13:00
<b>Instruction from TSOC</b>	YES
<b>Reason of Curtailment</b>	RES-E Generation Restriction due to low loading of the electrical system
<b>Total Estimated Energy of the day:</b>	983.4 MWh
<b>Total Estimated Curtailed Energy:</b>	472.6 MWh
<b>Percentage of Curtailed Energy</b>	48.1%

**Scada PVs Generation on 15/12/2024 (curtailment time: 09:15 - 13:00)**

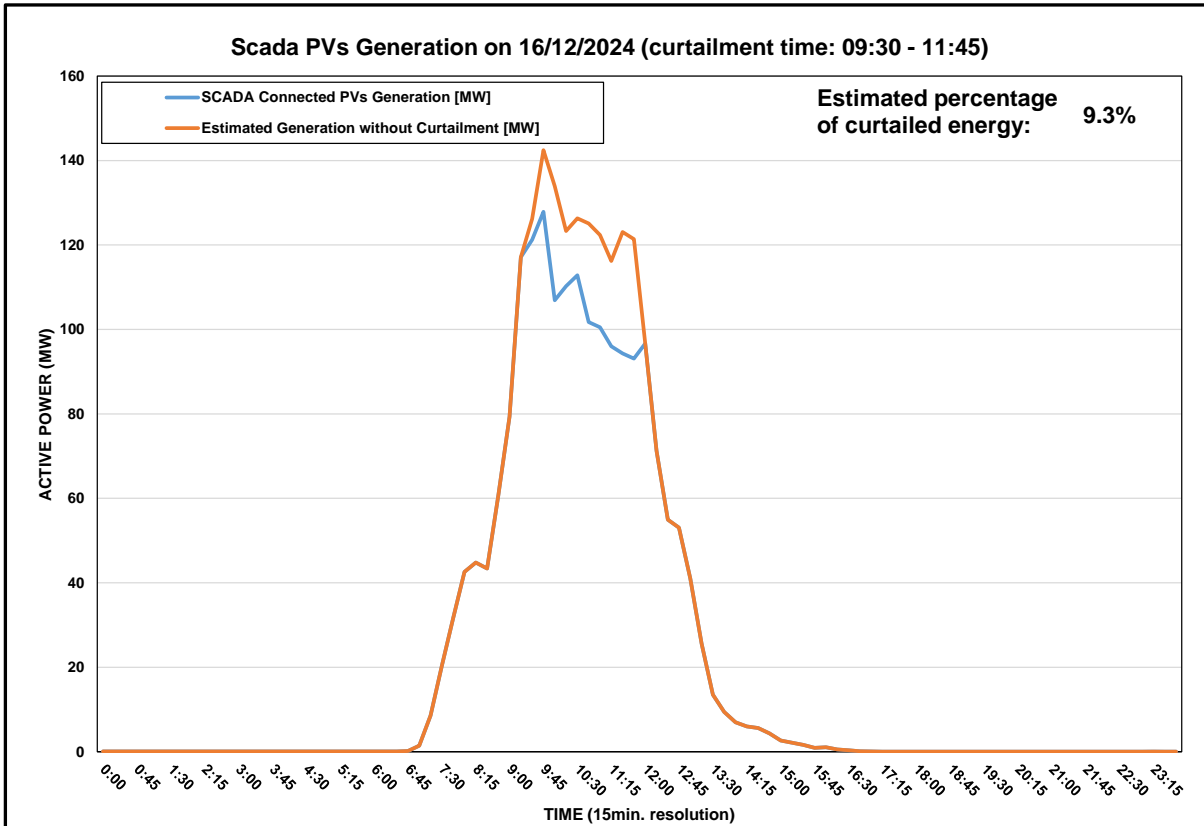


# DISTRIBUTION SYSTEM OPERATOR SYSTEM OPERATION



## Daily Curtailment Report of PV Generation

<b>Date of Curtailment</b>	16/12/2024
<b>Start of Curtailment</b>	9:30
<b>End of Curtailment</b>	11:45
<b>Instruction from TSOC</b>	YES
<b>Reason of Curtailment</b>	RES-E Generation Restriction due to low loading of the electrical system
<b>Total Estimated Energy of the day:</b>	527.6 MWh
<b>Total Estimated Curtailed Energy:</b>	48.9 MWh
<b>Percentage of Curtailed Energy</b>	9.3%



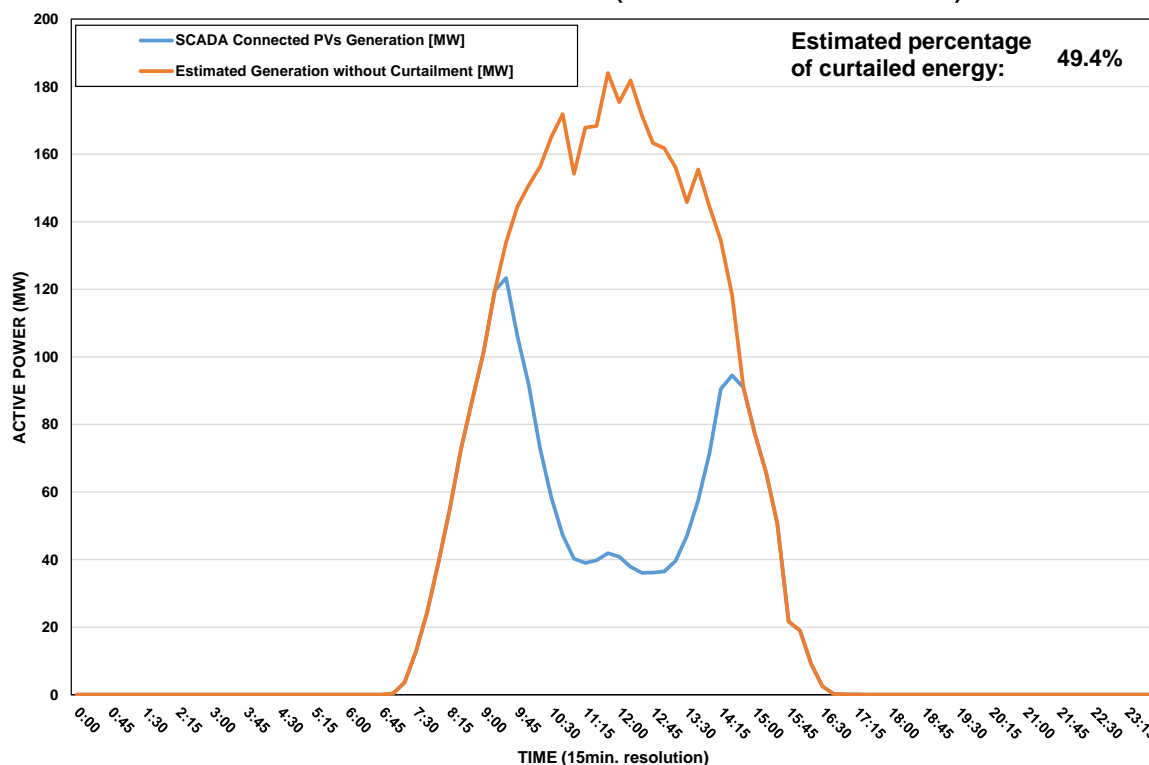
# DISTRIBUTION SYSTEM OPERATOR SYSTEM OPERATION



## Daily Curtailment Report of PV Generation

Date of Curtailment	17/12/2024
Start of Curtailment	9:30
End of Curtailment	14:30
Instruction from TSOC	YES
Reason of Curtailment	RES-E Generation Restriction due to low loading of the electrical system
Total Estimated Energy of the day:	1040.2 MWh
Total Estimated Curtailed Energy:	514.1 MWh
Percentage of Curtailed Energy	49.4%

**Scada PVs Generation on 17/12/2024 (curtailment time: 09:30 - 14:30)**





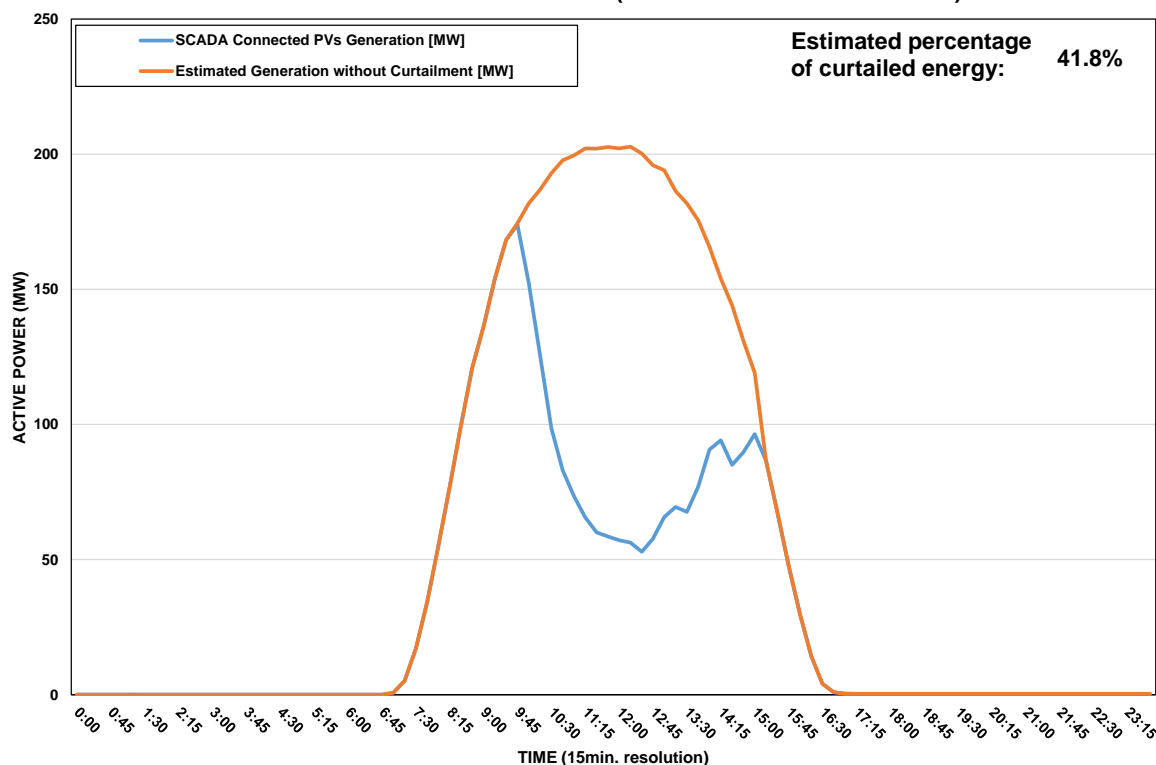
# DISTRIBUTION SYSTEM OPERATOR SYSTEM OPERATION



## Daily Curtailment Report of PV Generation

<b>Date of Curtailment</b>	18/12/2024
<b>Start of Curtailment</b>	9:45
<b>End of Curtailment</b>	15:00
<b>Instruction from TSOC</b>	YES
<b>Reason of Curtailment</b>	RES-E Generation Restriction due to low loading of the electrical system
<b>Total Estimated Energy of the day:</b>	1280.4 MWh
<b>Total Estimated Curtailed Energy:</b>	535.4 MWh
<b>Percentage of Curtailed Energy</b>	41.8%

**Scada PVs Generation on 18/12/2024 (curtailment time: 09:45 - 15:00)**



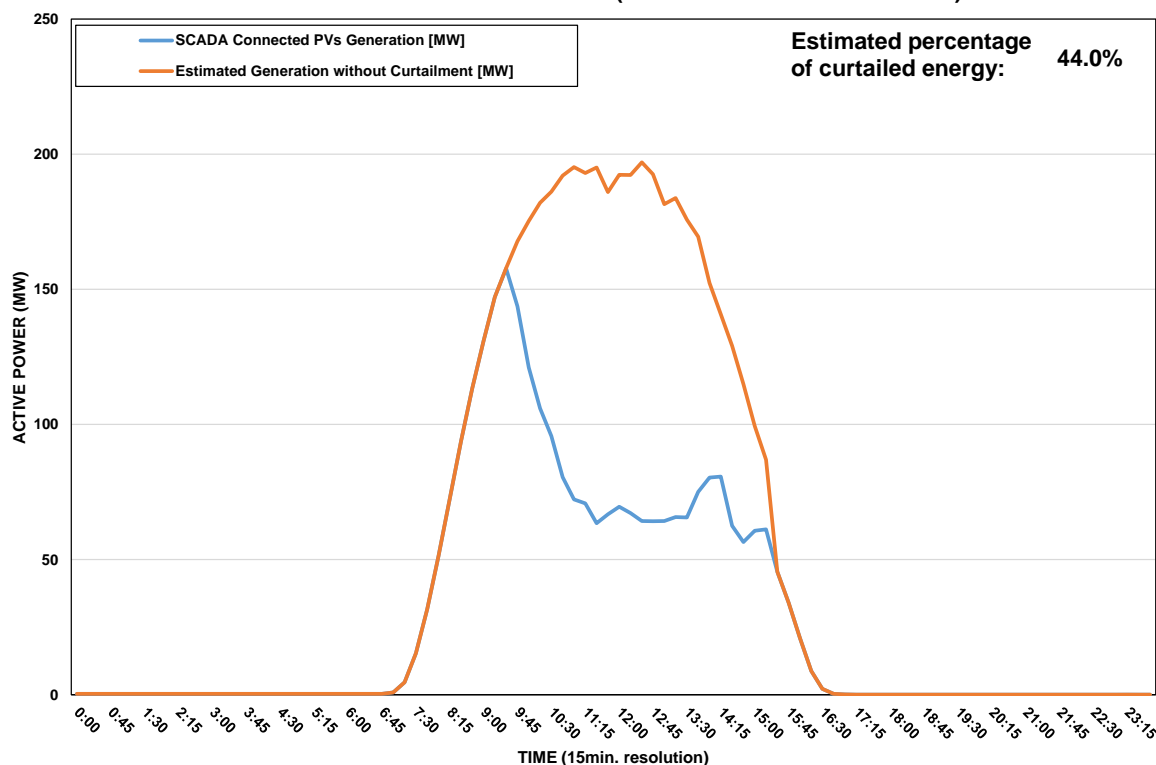
# DISTRIBUTION SYSTEM OPERATOR SYSTEM OPERATION



## Daily Curtailment Report of PV Generation

Date of Curtailment	19/12/2024
Start of Curtailment	9:30
End of Curtailment	15:15
Instruction from TSOC	YES
Reason of Curtailment	RES-E Generation Restriction due to low loading of the electrical system
Total Estimated Energy of the day:	1205.6 MWh
Total Estimated Curtailed Energy:	530.7 MWh
Percentage of Curtailed Energy	44.0%

**Scada PVs Generation on 19/12/2024 (curtailment time: 09:30 - 15:15)**

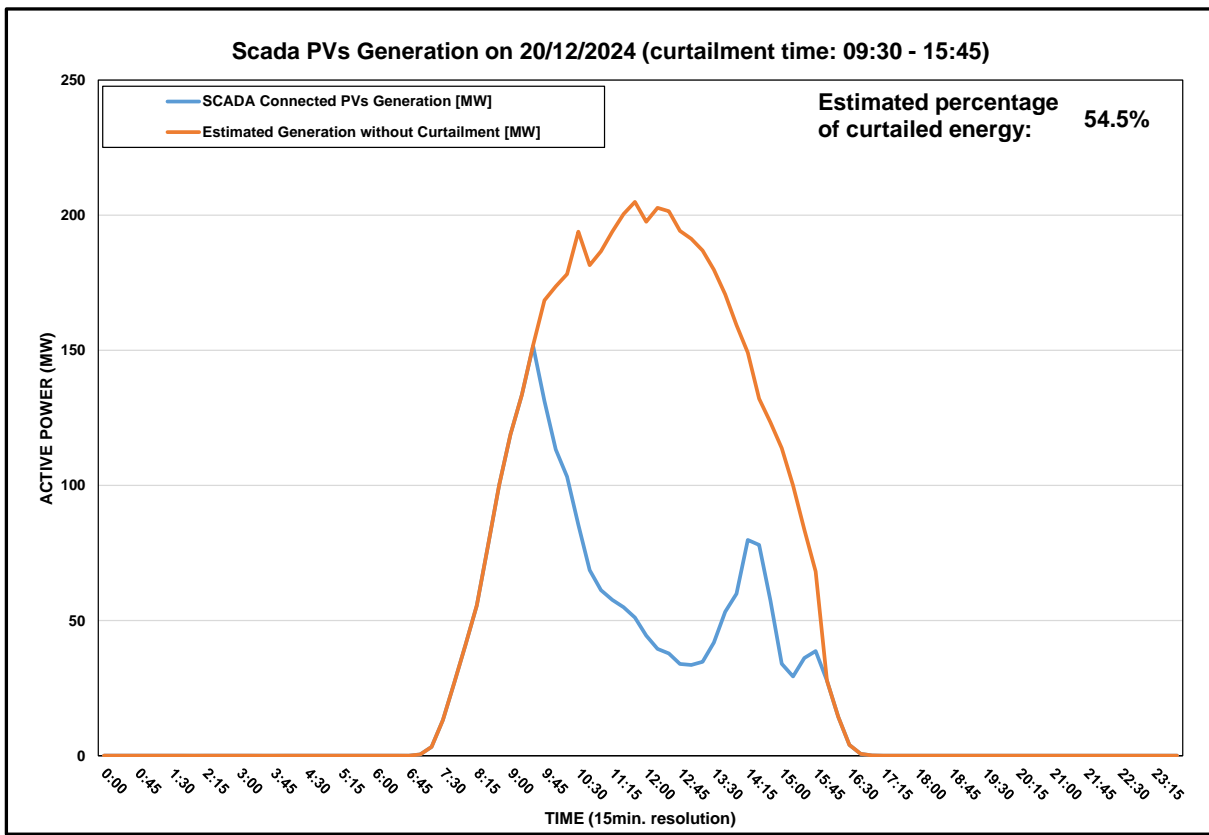


# DISTRIBUTION SYSTEM OPERATOR SYSTEM OPERATION



## Daily Curtailment Report of PV Generation

Date of Curtailment	20/12/2024
Start of Curtailment	9:30
End of Curtailment	15:45
Instruction from TSOC	YES
Reason of Curtailment	RES-E Generation Restriction due to low loading of the electrical system
Total Estimated Energy of the day:	1227 MWh
Total Estimated Curtailed Energy:	669.2 MWh
Percentage of Curtailed Energy	54.5%



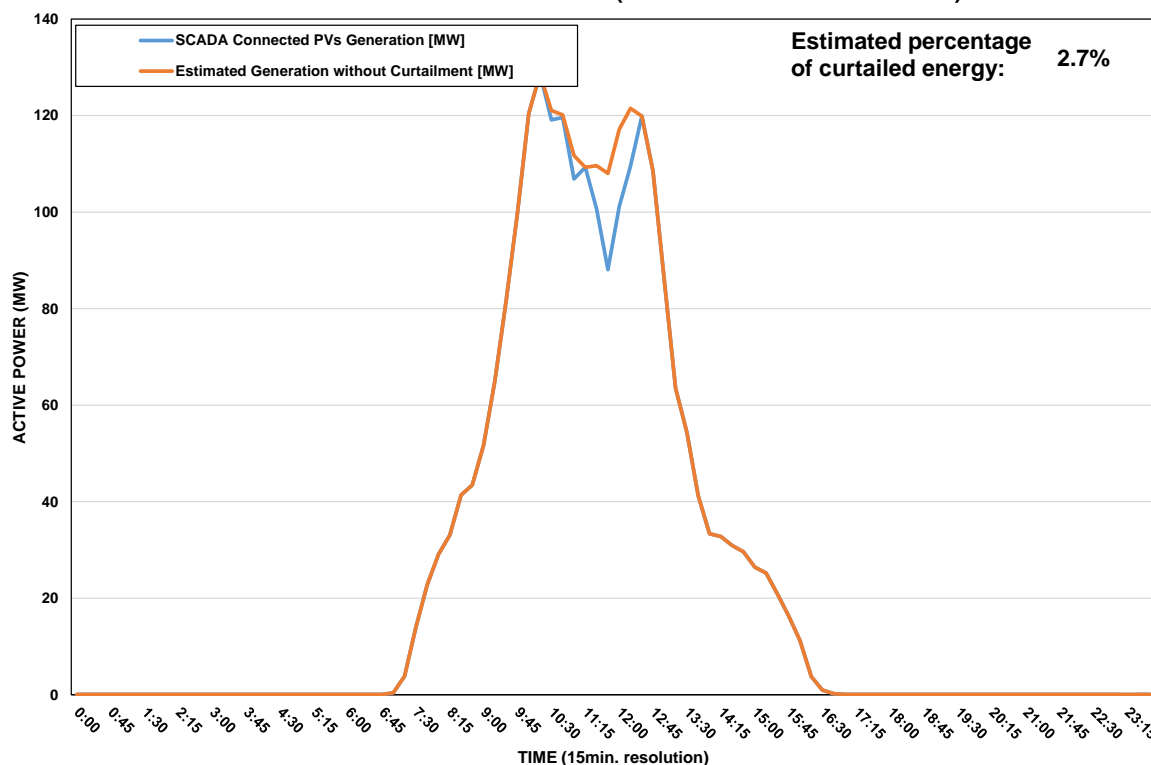
# DISTRIBUTION SYSTEM OPERATOR SYSTEM OPERATION



## Daily Curtailment Report of PV Generation

Date of Curtailment	21/12/2024
Start of Curtailment	10:30
End of Curtailment	12:15
Instruction from TSOC	YES
Reason of Curtailment	RES-E Generation Restriction due to low loading of the electrical system
Total Estimated Energy of the day:	590.3 MWh
Total Estimated Curtailed Energy:	16 MWh
Percentage of Curtailed Energy	2.7%

**Scada PVs Generation on 21/12/2024 (curtailment time: 10:30 - 12:15)**



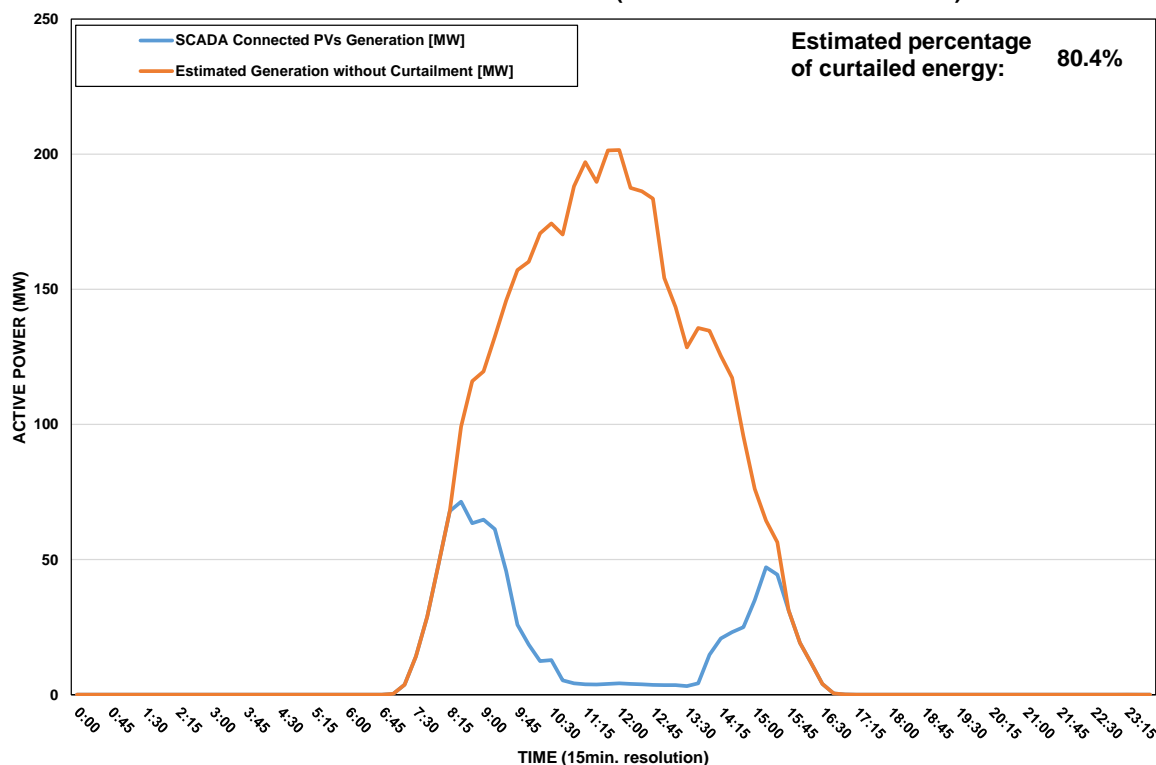
# DISTRIBUTION SYSTEM OPERATOR SYSTEM OPERATION



## Daily Curtailment Report of PV Generation

Date of Curtailment	22/12/2024	IoT/Ripple PV System cut-off:	
Start of Curtailment	8:30	Start of cut-off:	11:00
End of Curtailment	15:30	End of cut-off:	13:30
Instruction from TSOC	YES		
Reason of Curtailment	RES-E Generation Restriction due to low loading of the electrical system		
Total Estimated Energy of the day:	1111.2 MWh	Ripple cut-off Total Estimated energy	34.9 MWh
Total Estimated Curtailed Energy:	893.7 MWh	Ripple cut-off Total Estimated energy	9.8 MWh
Percentage of Curtailed Energy	80.4%		

**Scada PVs Generation on 22/12/2024 (curtailment time: 08:30 - 15:30)**

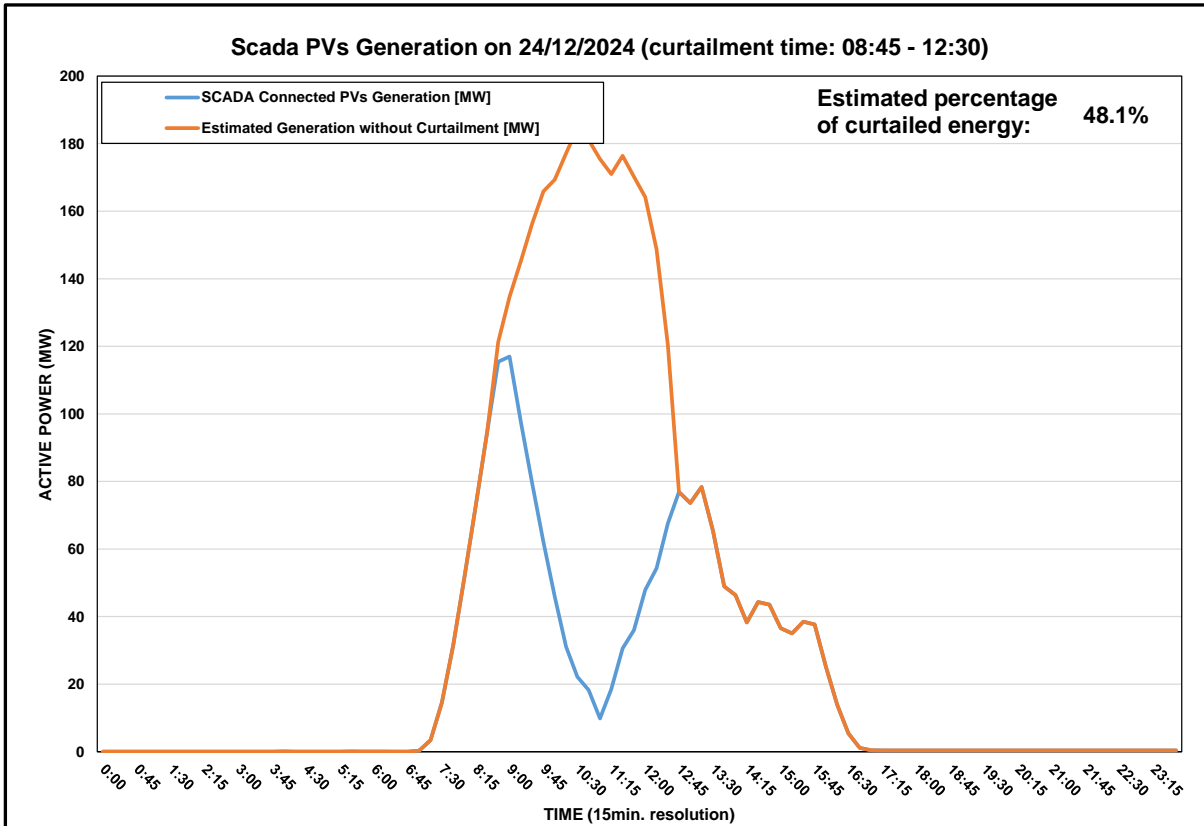


# DISTRIBUTION SYSTEM OPERATOR SYSTEM OPERATION



## Daily Curtailment Report of PV Generation

Date of Curtailment	24/12/2024
Start of Curtailment	8:45
End of Curtailment	12:30
Instruction from TSOC	YES
Reason of Curtailment	RES-E Generation Restriction due to low loading of the electrical system
Total Estimated Energy of the day:	887.5 MWh
Total Estimated Curtailed Energy:	427 MWh
Percentage of Curtailed Energy	48.1%



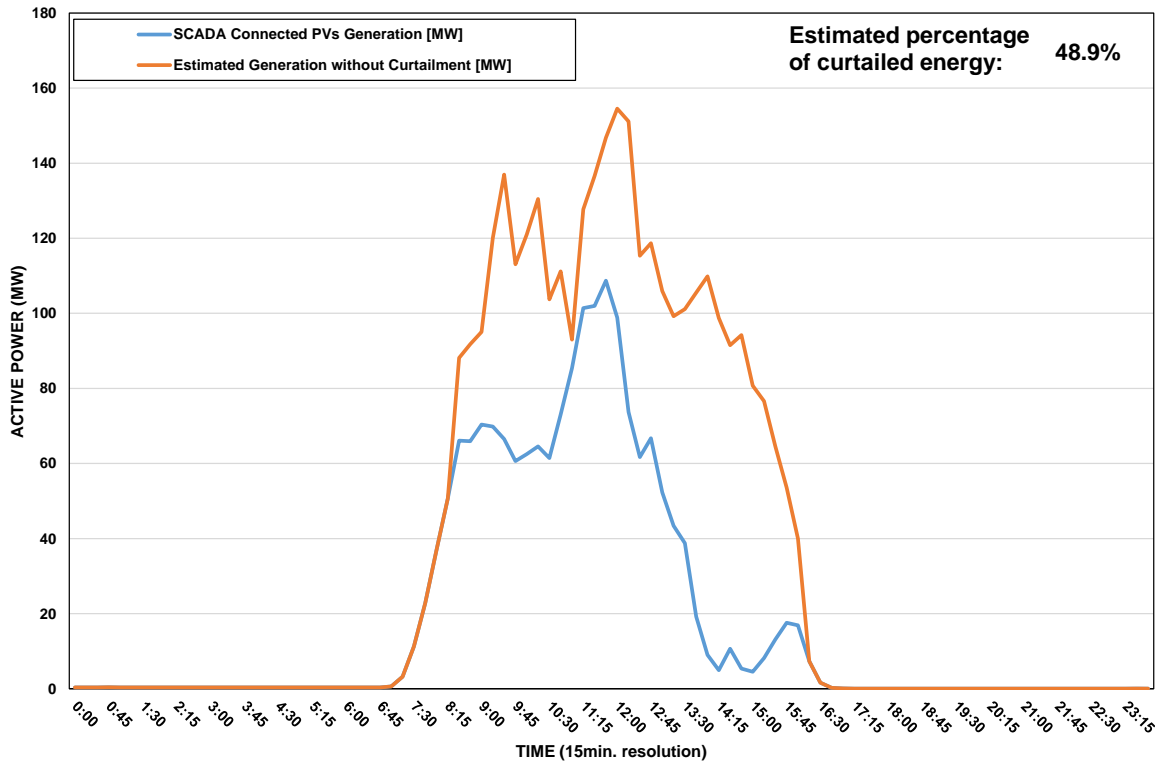
# DISTRIBUTION SYSTEM OPERATOR SYSTEM OPERATION



## Daily Curtailment Report of PV Generation

Date of Curtailment	25/12/2024	IoT/Ripple PV System cut-off:	
Start of Curtailment	8:30	Start of cut-off:	14:00
End of Curtailment	16:00	End of cut-off:	16:00
Instruction from TSOC	YES		
Reason of Curtailment	RES-E Generation Restriction due to low loading of the electrical system		
Total Estimated Energy of the day:	855.7 MWh	Ripple cut-off Total Estimated energy	8.6 MWh
Total Estimated Curtailed Energy:	418.4 MWh	Ripple cut-off Total Estimated energy	
Percentage of Curtailed Energy	48.9%		

**Scada PVs Generation on 25/12/2024 (curtailment time: 08:30 - 16:00)**



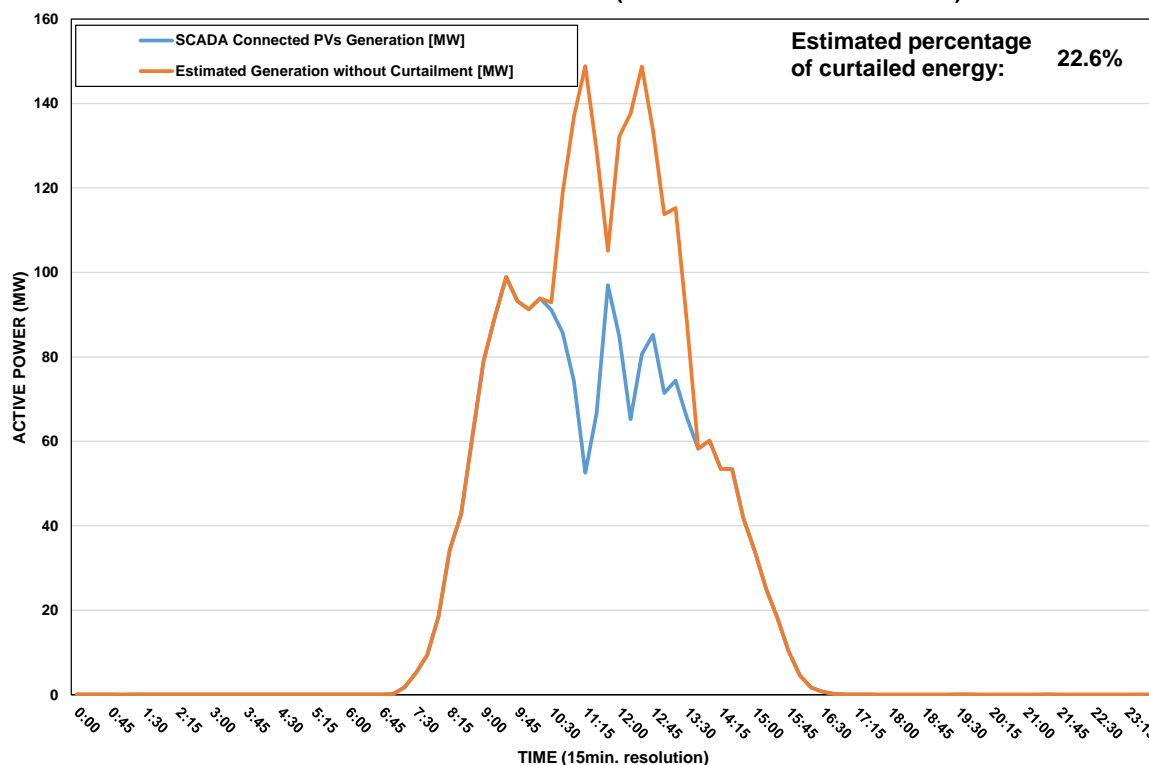
# DISTRIBUTION SYSTEM OPERATOR SYSTEM OPERATION



## Daily Curtailment Report of PV Generation

<b>Date of Curtailment</b>	26/12/2024
<b>Start of Curtailment</b>	10:30
<b>End of Curtailment</b>	13:30
<b>Instruction from TSOC</b>	YES
<b>Reason of Curtailment</b>	RES-E Generation Restriction due to low loading of the electrical system
<b>Total Estimated Energy of the day:</b>	671 MWh
<b>Total Estimated Curtailed Energy:</b>	151.6 MWh
<b>Percentage of Curtailed Energy</b>	22.6%

**Scada PVs Generation on 26/12/2024 (curtailment time: 10:30 - 13:30)**



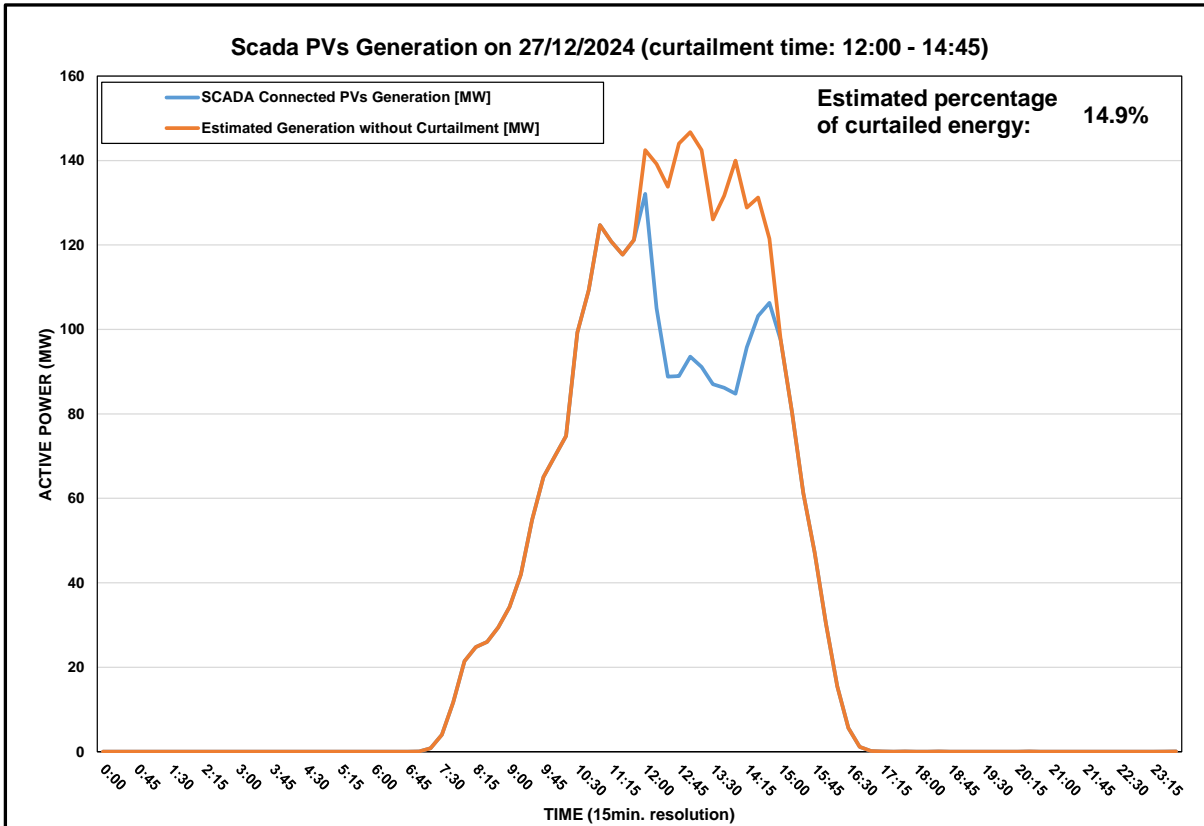


# DISTRIBUTION SYSTEM OPERATOR SYSTEM OPERATION



## Daily Curtailment Report of PV Generation

<b>Date of Curtailment</b>	<b>27/12/2024</b>
<b>Start of Curtailment</b>	<b>12:00</b>
<b>End of Curtailment</b>	<b>14:45</b>
<b>Instruction from TSOC</b>	<b>YES</b>
<b>Reason of Curtailment</b>	<i>RES-E Generation Restriction due to low loading of the electrical system</i>
<b>Total Estimated Energy of the day:</b>	<b>780.3 MWh</b>
<b>Total Estimated Curtailed Energy:</b>	<b>116.2 MWh</b>
<b>Percentage of Curtailed Energy</b>	<b>14.9%</b>



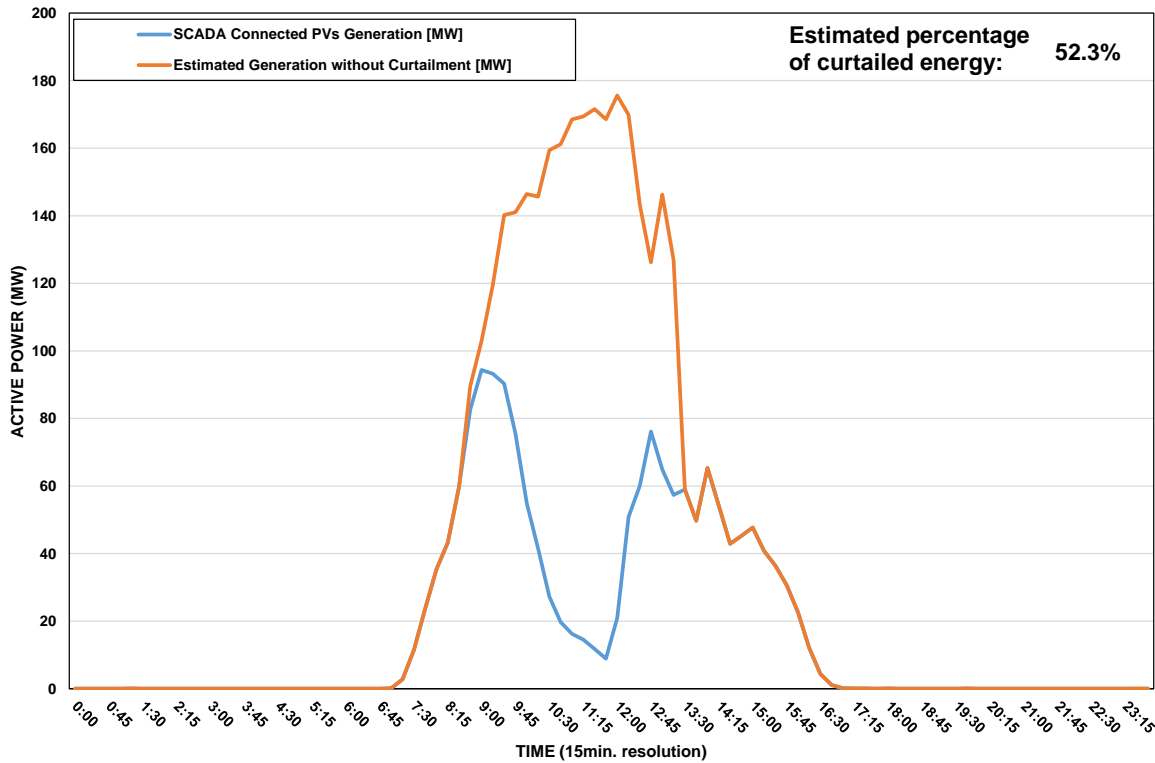
# DISTRIBUTION SYSTEM OPERATOR SYSTEM OPERATION



## Daily Curtailment Report of PV Generation

<b>Date of Curtailment</b>	<b>28/12/2024</b>	<b>IoT/Ripple PV System cut-off:</b>	
<b>Start of Curtailment</b>	<b>8:45</b>	<b>Start of cut-off:</b>	<b>10:30</b>
<b>End of Curtailment</b>	<b>13:15</b>	<b>End of cut-off:</b>	<b>13:15</b>
<b>Instruction from TSOC</b>	<b>YES</b>		
<b>Reason of Curtailment</b>	<i>RES-E Generation Restriction due to low loading of the electrical system</i>		
<b>Total Estimated Energy of the day:</b>	<b>865.8 MWh</b>	<b>Ripple cut-off Total Estimated energy</b>	<b>50.9 MWh</b>
<b>Total Estimated Curtailed Energy:</b>	<b>452.7 MWh</b>	<b>Ripple cut-off Total Estimated energy</b>	<b>110.1 MWh</b>
<b>Percentage of Curtailed Energy</b>	<b>52.3%</b>		

**Scada PVs Generation on 28/12/2024 (curtailment time: 08:45 - 13:15)**



# DISTRIBUTION SYSTEM OPERATOR SYSTEM OPERATION



## Daily Curtailment Report of PV Generation

<b>Date of Curtailment</b>	31/12/2024
<b>Start of Curtailment</b>	10:00
<b>End of Curtailment</b>	14:30
<b>Instruction from TSOC</b>	YES
<b>Reason of Curtailment</b>	RES-E Generation Restriction due to low loading of the electrical system
<b>Total Estimated Energy of the day:</b>	889.1 MWh
<b>Total Estimated Curtailed Energy:</b>	211.2 MWh
<b>Percentage of Curtailed Energy</b>	23.8%

**Scada PVs Generation on 31/12/2024 (curtailment time: 10:00 - 14:30)**

