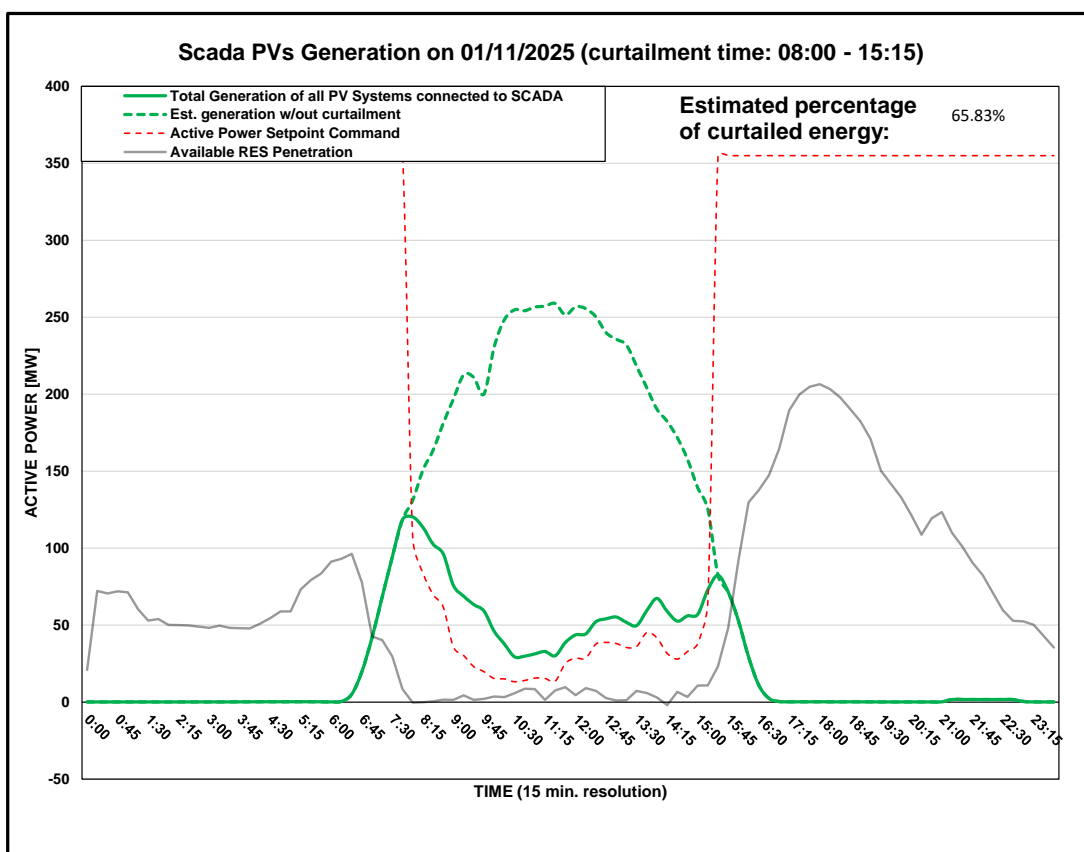


DISTRIBUTION SYSTEM OPERATOR SYSTEM OPERATION



PV Generation Curtailment Report

| | | |
|--|--|---|
| Date of Curtailment: | 01/11/2025 | Cut-off of PV Systems using IoT: |
| Start of Curtailment (G1 - non Priority) | 8:00 | |
| Start of Curtailment (G2 - Priority) | 9:45 | Cut-off areas using IoT: PV-LCA/FAM1, PV-LCA/FAM2, PV-LCA/FAM3, PV - ARTICLE 22 |
| End of Curtailment (G1 - non Priority) | 15:15 | |
| End of Curtailment (G2 - Priority) | 15:15 | |
| Instruction from TSOC | YES | Start of cut-off: 10:15 End of cut-off: 15:45 |
| Reason of Curtailment: | RES-E Generation Restriction due to low loading of the electrical system | |
| Total Estimated Energy of the day: | 1734.6 MWh | |
| Total Estimated Curtailed Energy: | 1141.9 MWh | Total Est. Energy of the cut-off PV systems using IoT: 78.6MWh |
| Percentage of Curtailed Energy: | 65.83% | |



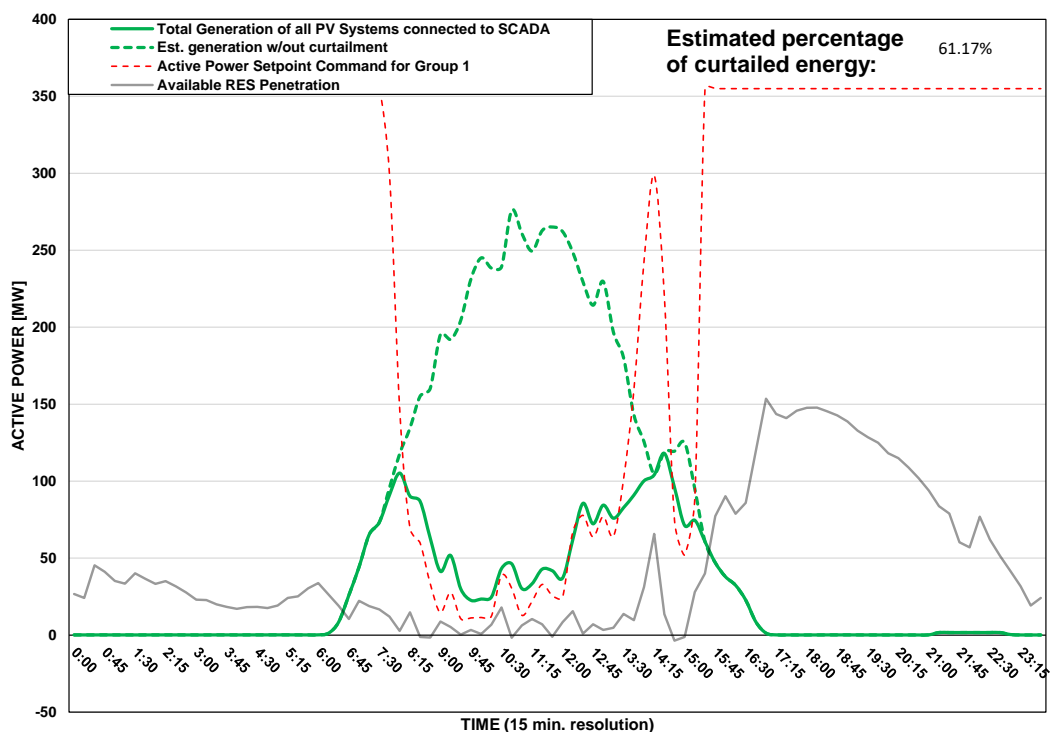
DISTRIBUTION SYSTEM OPERATOR SYSTEM OPERATION



PV Generation Curtailment Report

| | | |
|--|--|---|
| Date of Curtailment: | 02/11/2025 | Cut-off of PV Systems using IoT: |
| Start of Curtailment (G1 - non Priority) | 7:45 | |
| Start of Curtailment (G2 - Priority) | 9:00 | Cut-off areas using IoT: PV-NIC1, PV-NIC2, PV-NIC4, PV-LIM1, PV-LIM3, PV - ARTICLE 22 |
| End of Curtailment (G1 - non Priority) | 15:15 | |
| End of Curtailment (G2 - Priority) | 16:45 | |
| Instruction from TSOC | YES | Start of cut-off: 09:00 End of cut-off: 14:15 |
| Reason of Curtailment: | RES-E Generation Restriction due to low loading of the electrical system | |
| Total Estimated Energy of the day: | 1591.7 MWh | |
| Total Estimated Curtailed Energy: | 973.6 MWh | Total Est. Energy of the cut-off PV systems using IoT: 142MWh |
| Percentage of Curtailed Energy: | 61.17% | |

Scada PVs Generation on 02/11/2025 (curtailment time: 07:45 - 15:15)



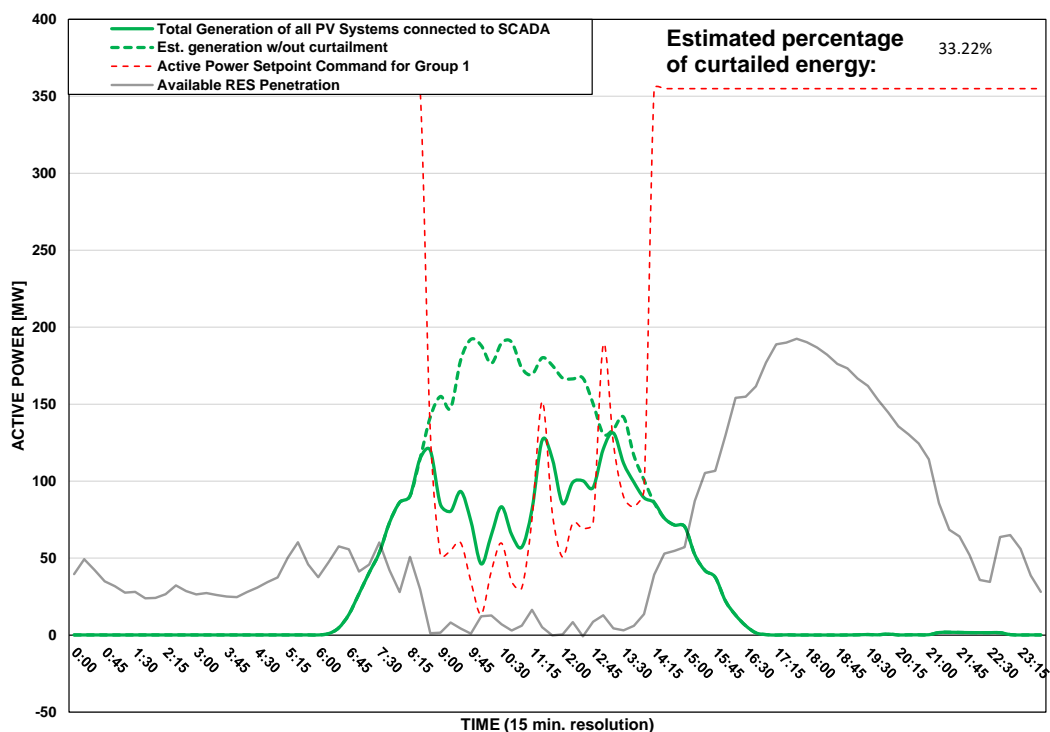
DISTRIBUTION SYSTEM OPERATOR SYSTEM OPERATION



PV Generation Curtailment Report

| | | |
|--|--|---|
| Date of Curtailment: | 03/11/2025 | Cut-off of PV Systems using IoT: |
| Start of Curtailment (G1 - non Priority) | 8:45 | |
| Start of Curtailment (G2 - Priority) | 10:00 | Cut-off areas using IoT: PV -ARTICLE 22 |
| End of Curtailment (G1 - non Priority) | 14:00 | |
| End of Curtailment (G2 - Priority) | 11:30 | |
| Instruction from TSOC | YES | Start of cut-off: 10:00 End of cut-off: 14:45 |
| Reason of Curtailment: | RES-E Generation Restriction due to low loading of the electrical system | |
| Total Estimated Energy of the day: | 1134 MWh | |
| Total Estimated Curtailed Energy: | 376.7 MWh | Total Est. Energy of the cut-off PV systems using IoT: 9.2MWh |
| Percentage of Curtailed Energy: | 33.22% | |

Scada PVs Generation on 03/11/2025 (curtailment time: 08:45 - 14:00)

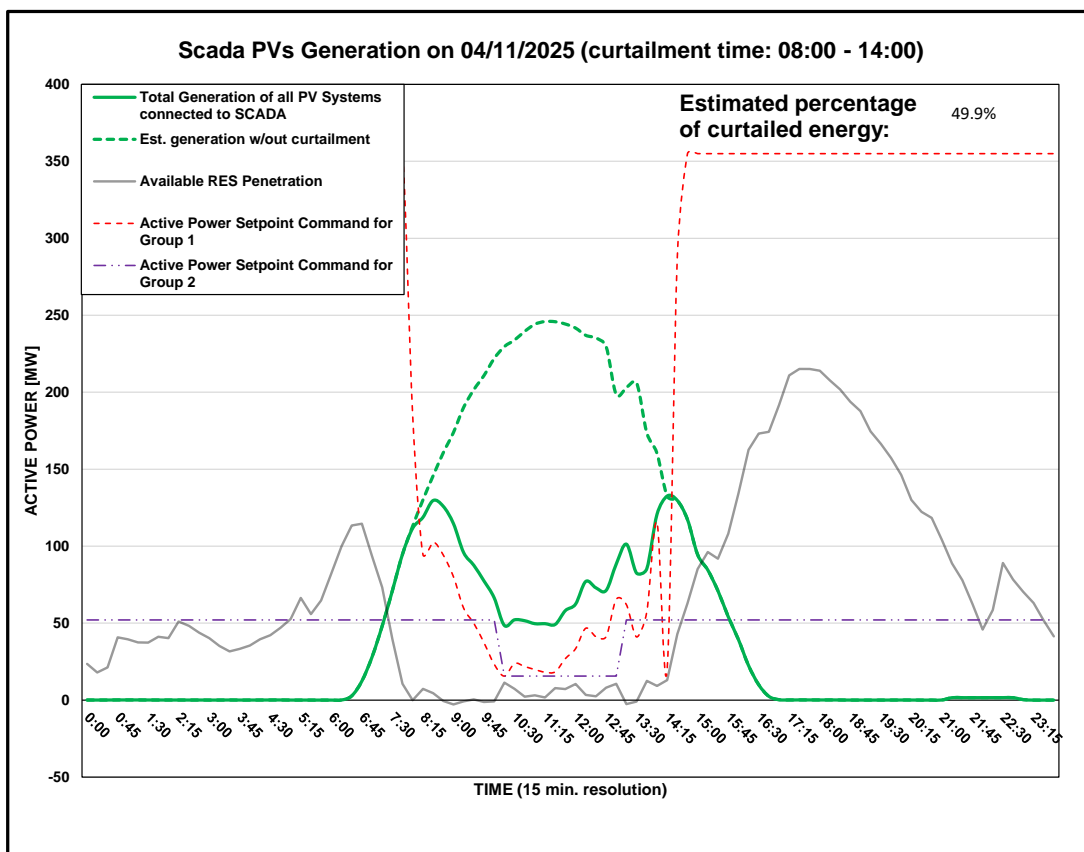


DISTRIBUTION SYSTEM OPERATOR SYSTEM OPERATION



PV Generation Curtailment Report

| | | |
|--|--|--|
| Date of Curtailment: | 04/11/2025 | Cut-off of PV Systems using IoT: |
| Start of Curtailment (G1 - non Priority) | 8:00 | |
| Start of Curtailment (G2 - Priority) | 10:00 | Cut-off areas using IoT: PV -ARTICLE 22 |
| End of Curtailment (G1 - non Priority) | 14:00 | |
| End of Curtailment (G2 - Priority) | 13:00 | |
| Instruction from TSOC | YES | Start of cut-off: 10:15 End of cut-off: 15:30 |
| Reason of Curtailment: | RES-E Generation Restriction due to low loading of the electrical system | |
| Total Estimated Energy of the day: | 1536.9 MWh | |
| Total Estimated Curtailed Energy: | 766.9 MWh | Total Est. Energy of the cut-off PV systems using IoT: 20.5MWh |
| Percentage of Curtailed Energy: | 49.9% | |

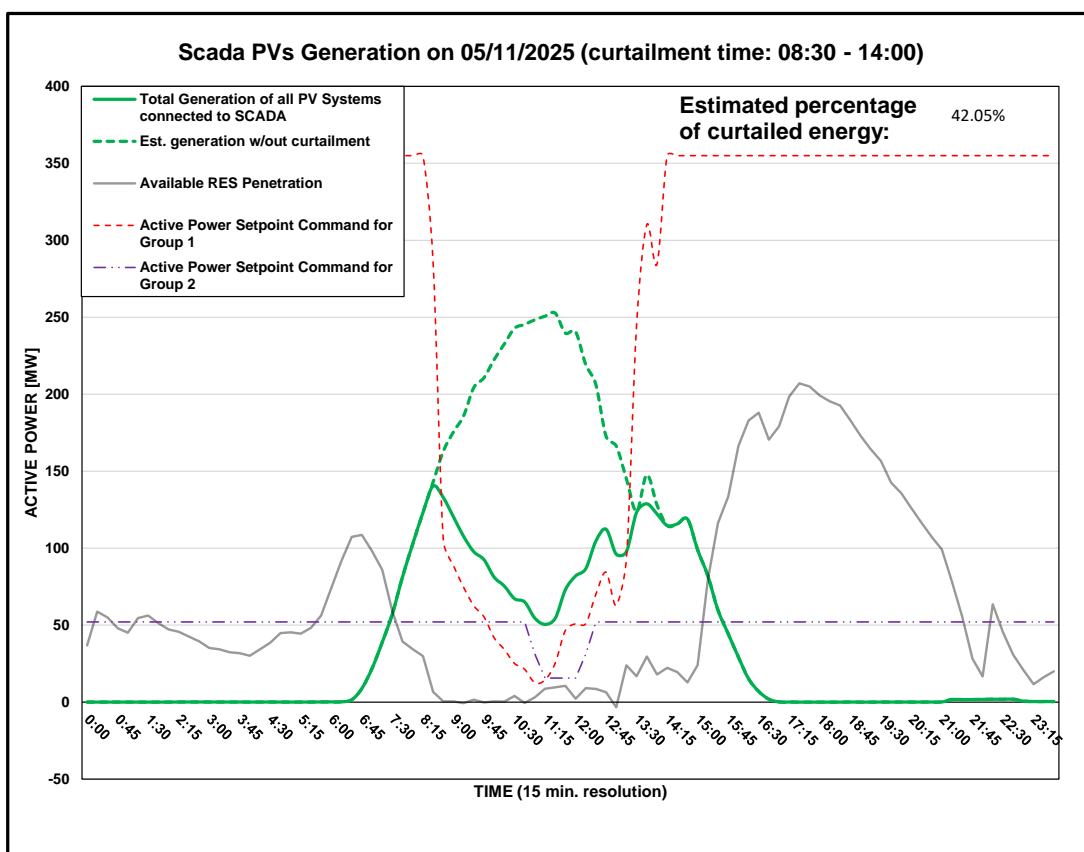


DISTRIBUTION SYSTEM OPERATOR SYSTEM OPERATION



PV Generation Curtailment Report

| | | |
|--|--|---|
| Date of Curtailment: | 05/11/2025 | Cut-off of PV Systems using IoT: |
| Start of Curtailment (G1 - non Priority) | 8:30 | |
| Start of Curtailment (G2 - Priority) | 10:45 | Cut-off areas using IoT: PV -ARTICLE 22 |
| End of Curtailment (G1 - non Priority) | 14:00 | |
| End of Curtailment (G2 - Priority) | 12:15 | |
| Instruction from TSOC | YES | Start of cut-off: 11:00 End of cut-off: 15:15 |
| Reason of Curtailment: | RES-E Generation Restriction due to low loading of the electrical system | |
| Total Estimated Energy of the day: | 1427 MWh | |
| Total Estimated Curtailed Energy: | 600 MWh | Total Est. Energy of the cut-off PV systems using IoT: 8.1MWh |
| Percentage of Curtailed Energy: | 42.05% | |



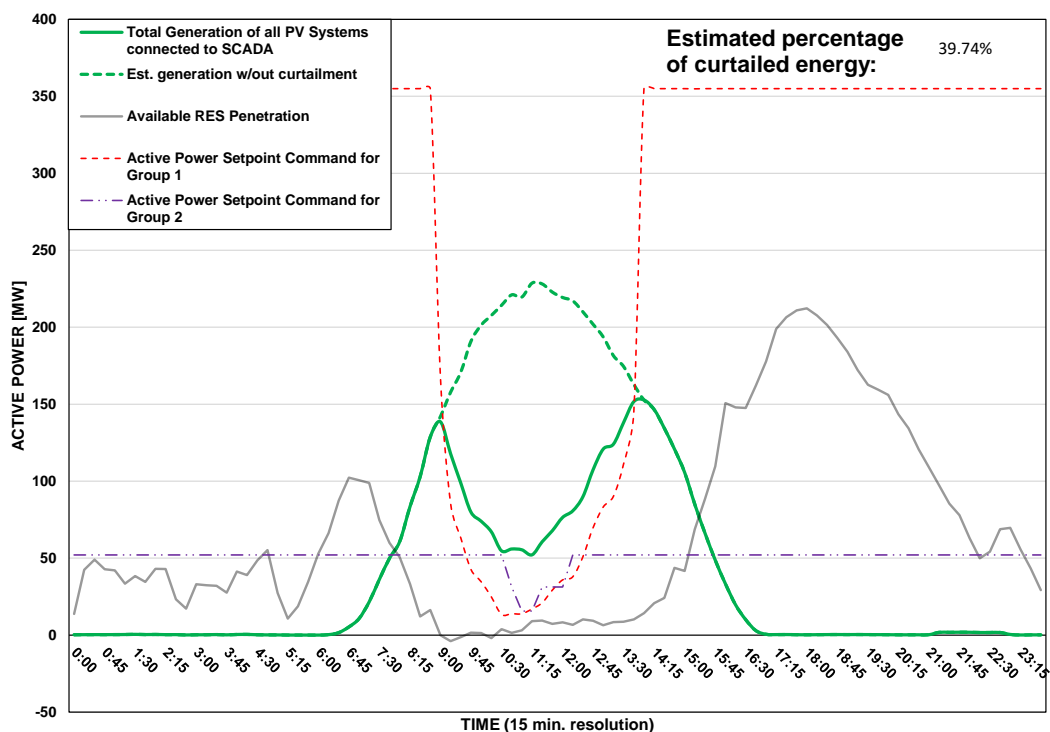
DISTRIBUTION SYSTEM OPERATOR SYSTEM OPERATION



PV Generation Curtailment Report

| | | |
|--|--|--|
| Date of Curtailment: | 06/11/2025 | Cut-off of PV Systems using IoT: |
| Start of Curtailment (G1 - non Priority) | 9:00 | |
| Start of Curtailment (G2 - Priority) | 10:45 | Cut-off areas using IoT: PV -ARTICLE 22 |
| End of Curtailment (G1 - non Priority) | 13:45 | |
| End of Curtailment (G2 - Priority) | 12:00 | |
| Instruction from TSOC | YES | Start of cut-off: 07:15 End of cut-off: 15:00 |
| Reason of Curtailment: | RES-E Generation Restriction due to low loading of the electrical system | |
| Total Estimated Energy of the day: | 1355 MWh | |
| Total Estimated Curtailed Energy: | 538.4 MWh | Total Est. Energy of the cut-off PV systems using IoT: 11MWh |
| Percentage of Curtailed Energy: | 39.74% | |

Scada PVs Generation on 06/11/2025 (curtailment time: 09:00 - 13:45)

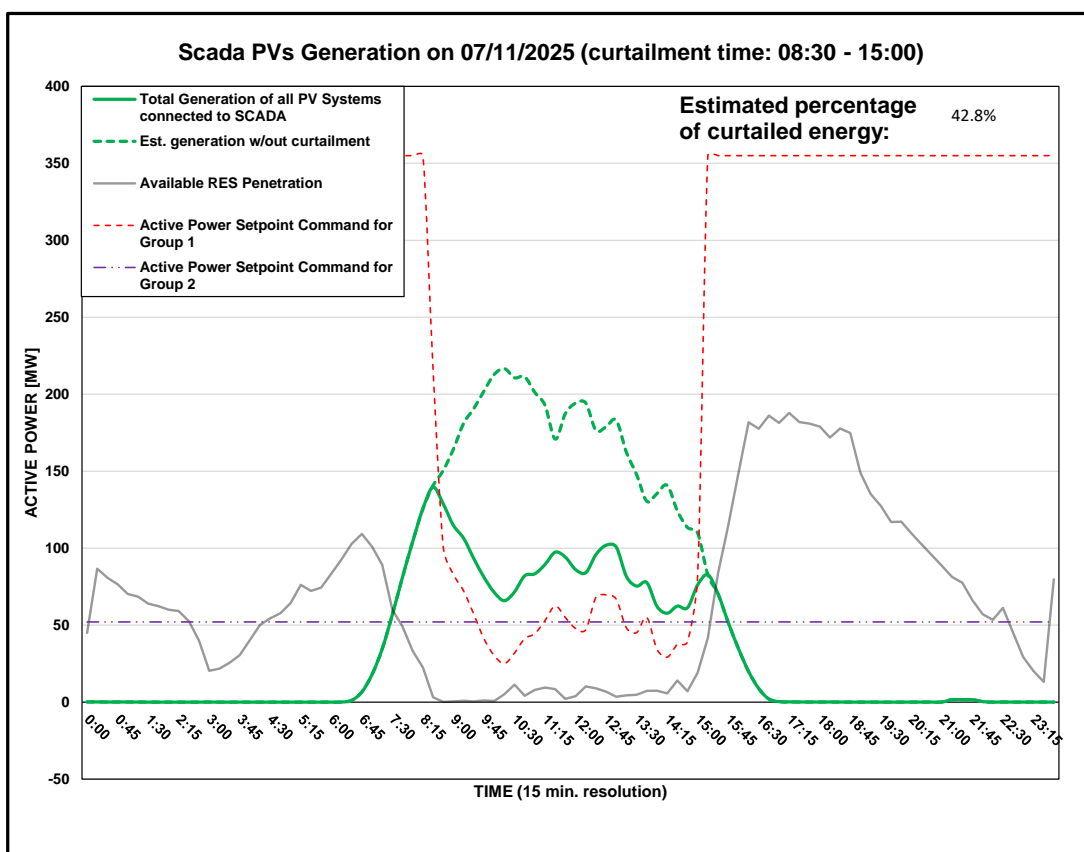


DISTRIBUTION SYSTEM OPERATOR SYSTEM OPERATION



PV Generation Curtailment Report

| | |
|--|--|
| Date of Curtailment: | 07/11/2025 |
| Start of Curtailment (G1 - non Priority) | 8:30 |
| Start of Curtailment (G2 - Priority) | |
| End of Curtailment (G1 - non Priority) | 15:00 |
| End of Curtailment (G2 - Priority) | |
| Instruction from TSOC | YES |
| Reason of Curtailment: | RES-E Generation Restriction due to low loading of the electrical system |
| Total Estimated Energy of the day: | 1333 MWh |
| Total Estimated Curtailed Energy: | 570.6 MWh |
| Percentage of Curtailed Energy: | 42.8% |

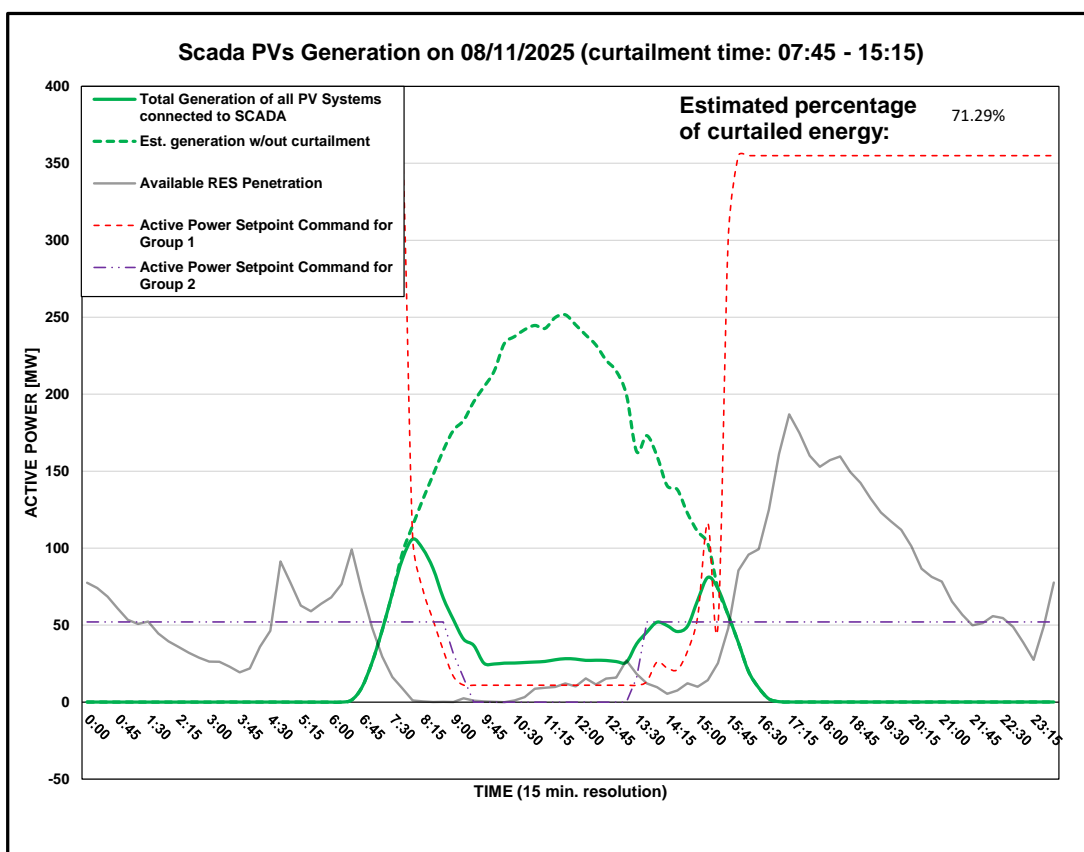


DISTRIBUTION SYSTEM OPERATOR SYSTEM OPERATION



PV Generation Curtailment Report

| | | |
|--|--|---|
| Date of Curtailment: | 08/11/2025 | Cut-off of PV Systems using RIPPLE and IoT: |
| Start of Curtailment (G1 - non Priority) | 7:45 | |
| Start of Curtailment (G2 - Priority) | 9:00 | Cut-off areas using RIPPLE: NIC 3, LAR 1, LIM 1, PAF 1 Cut-off areas using IoT: PV -ARTICLE 22 |
| End of Curtailment (G1 - non Priority) | 15:15 | |
| End of Curtailment (G2 - Priority) | 13:30 | |
| Instruction from TSOC | YES | Start of cut-off: 09:00 End of cut-off: 15:45 |
| Reason of Curtailment: | RES-E Generation Restriction due to low loading of the electrical system | |
| Total Estimated Energy of the day: | 1538.2 MWh | Total Est. Energy of the cut-off PV systems using RIPPLE: 142.4MWh |
| Total Estimated Curtailed Energy: | 1096.6 MWh | Total Est. Energy of the cut-off PV systems using IoT: 16.8MWh |
| Percentage of Curtailed Energy: | 71.29% | |



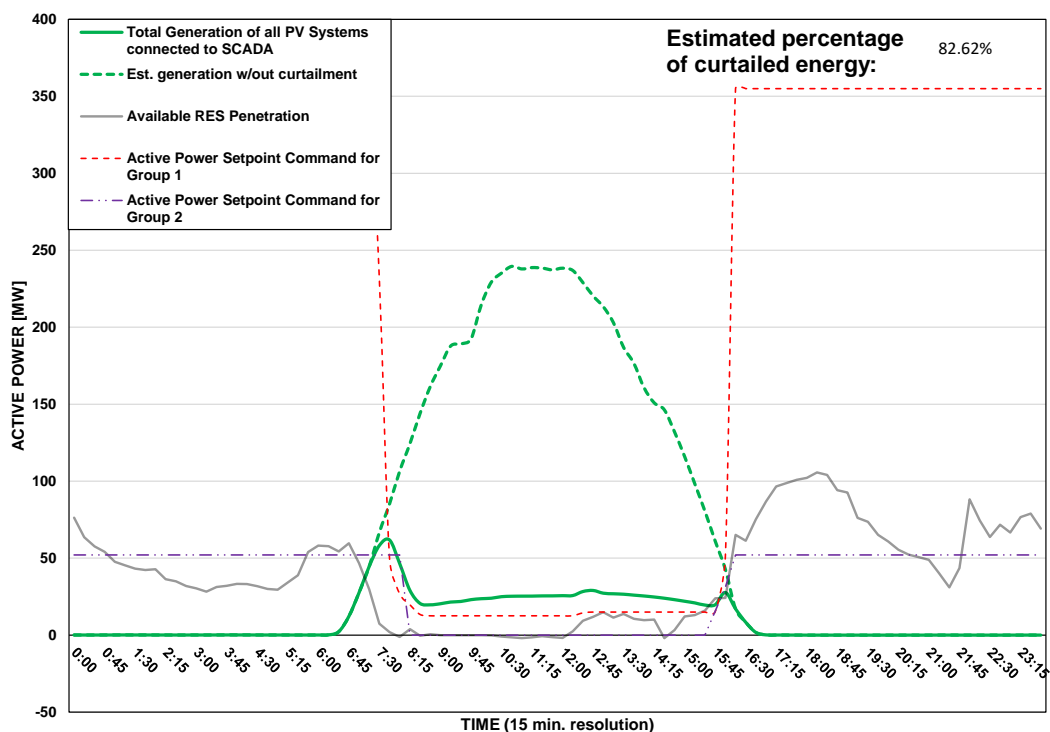
DISTRIBUTION SYSTEM OPERATOR SYSTEM OPERATION



PV Generation Curtailment Report

| | | |
|--|--|---|
| Date of Curtailment: | 09/11/2025 | Cut-off of PV Systems using RIPPLE and IoT: |
| Start of Curtailment (G1 - non Priority) | 7:30 | |
| Start of Curtailment (G2 - Priority) | 8:00 | Cut-off areas using RIPPLE: NIC 2, LAR 1, LIM 2, PAF 1 Cut-off areas using IoT: PV-NIC1, PV-NIC2, PV-NIC3, PV-NIC4, PV-LCA/FAM2, PV-LIM3, PV-PAF1, PV-ARTICLE 22 |
| End of Curtailment (G1 - non Priority) | 16:00 | |
| End of Curtailment (G2 - Priority) | 16:45 | |
| Instruction from TSOC | YES | Start of cut-off: 08:30 End of cut-off: 16:15 |
| Reason of Curtailment: | RES-E Generation Restriction due to low loading of the electrical system | |
| Total Estimated Energy of the day: | 1528.6 MWh | Total Est. Energy of the cut-off PV systems using RIPPLE: 213.1MWh |
| Total Estimated Curtailed Energy: | 1263 MWh | Total Est. Energy of the cut-off PV systems using IoT: 294.1MWh |
| Percentage of Curtailed Energy: | 82.62% | |

Scada PVs Generation on 09/11/2025 (curtailment time: 07:30 - 16:00)



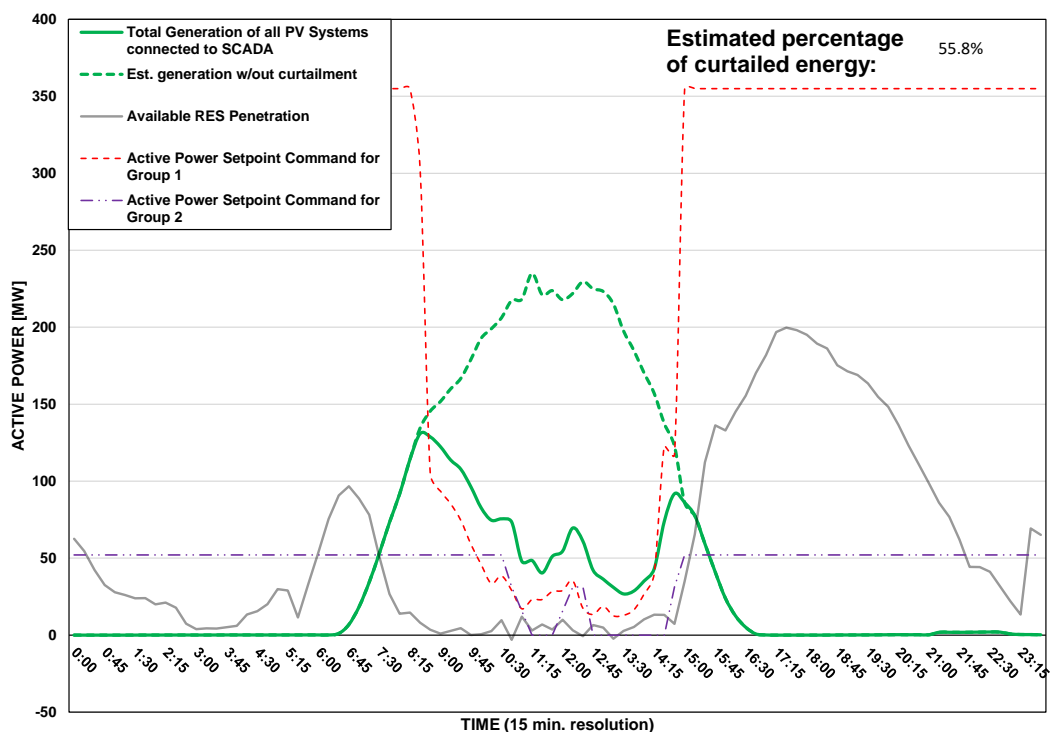
DISTRIBUTION SYSTEM OPERATOR SYSTEM OPERATION



PV Generation Curtailment Report

| | | |
|---|--|---|
| Date of Curtailment: | 10/11/2025 | <u>Cut-off of PV Systems using RIPPLE and IoT:</u> |
| Start of Curtailment (G1 - non Priority) | 8:30 | |
| Start of Curtailment (G2 - Priority) | 10:45 | Cut-off areas using RIPPLE: NIC 2, LAR 2 Cut-off areas using IoT: PV-NIC1, PV-LIM1, PV -ARTICLE 22 |
| End of Curtailment (G1 - non Priority) | 14:45 | |
| End of Curtailment (G2 - Priority) | 14:45 | |
| Instruction from TSOC | YES | Start of cut-off: 10:45 End of cut-off: 15:30 |
| Reason of Curtailment: | RES-E Generation Restriction due to low loading of the electrical system | |
| Total Estimated Energy of the day: | 1418.3 MWh | Total Est. Energy of the cut-off PV systems using RIPPLE: 17.9MWh |
| Total Estimated Curtailed Energy: | 791.4 MWh | Total Est. Energy of the cut-off PV systems using IoT: 29.1MWh |
| Percentage of Curtailed Energy: | 55.8% | |

Scada PVs Generation on 10/11/2025 (curtailment time: 08:30 - 14:45)

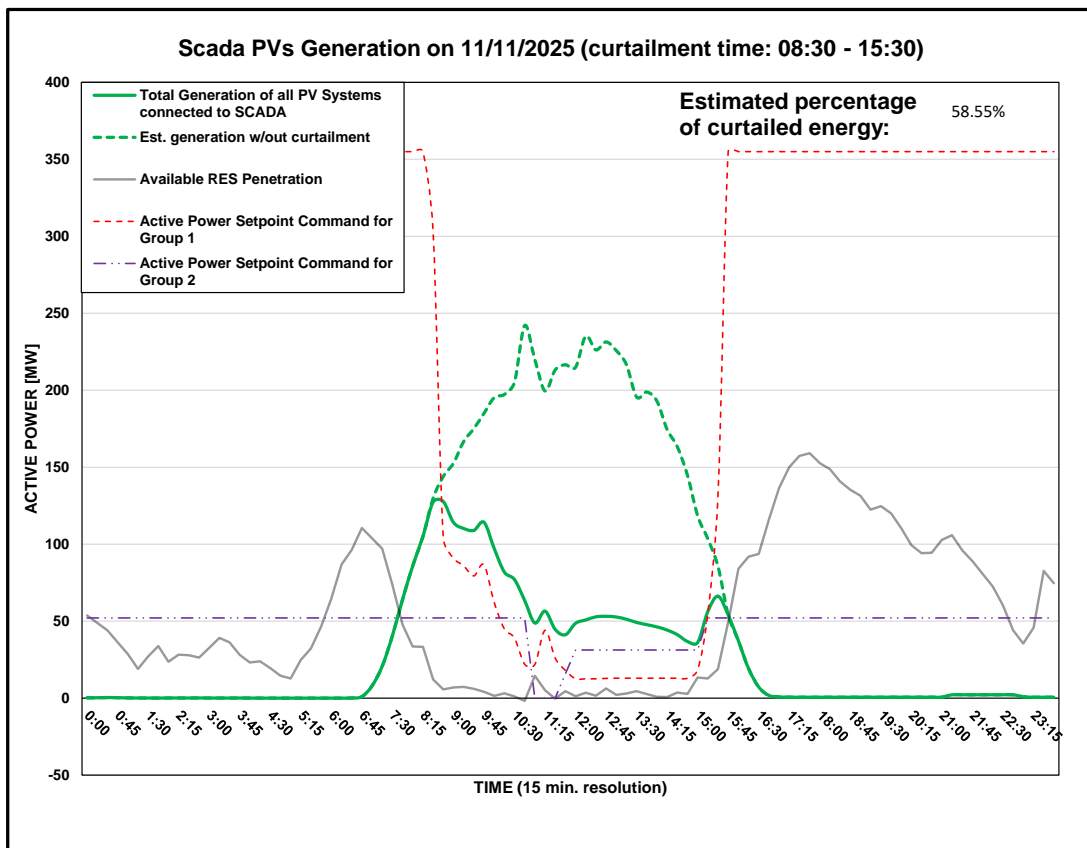


DISTRIBUTION SYSTEM OPERATOR SYSTEM OPERATION



PV Generation Curtailment Report

| | | |
|--|--|--|
| Date of Curtailment: | 11/11/2025 | Cut-off of PV Systems using IoT: |
| Start of Curtailment (G1 - non Priority) | 8:30 | |
| Start of Curtailment (G2 - Priority) | 11:00 | Cut-off areas using IoT: PV -ARTICLE 22 |
| End of Curtailment (G1 - non Priority) | 15:30 | |
| End of Curtailment (G2 - Priority) | 15:00 | |
| Instruction from TSOC | YES | Start of cut-off: 11:00 End of cut-off: 16:00 |
| Reason of Curtailment: | RES-E Generation Restriction due to low loading of the electrical system | |
| Total Estimated Energy of the day: | 1461.3 MWh | |
| Total Estimated Curtailed Energy: | 855.6 MWh | Total Est. Energy of the cut-off PV systems using IoT: 10.6MWh |
| Percentage of Curtailed Energy: | 58.55% | |

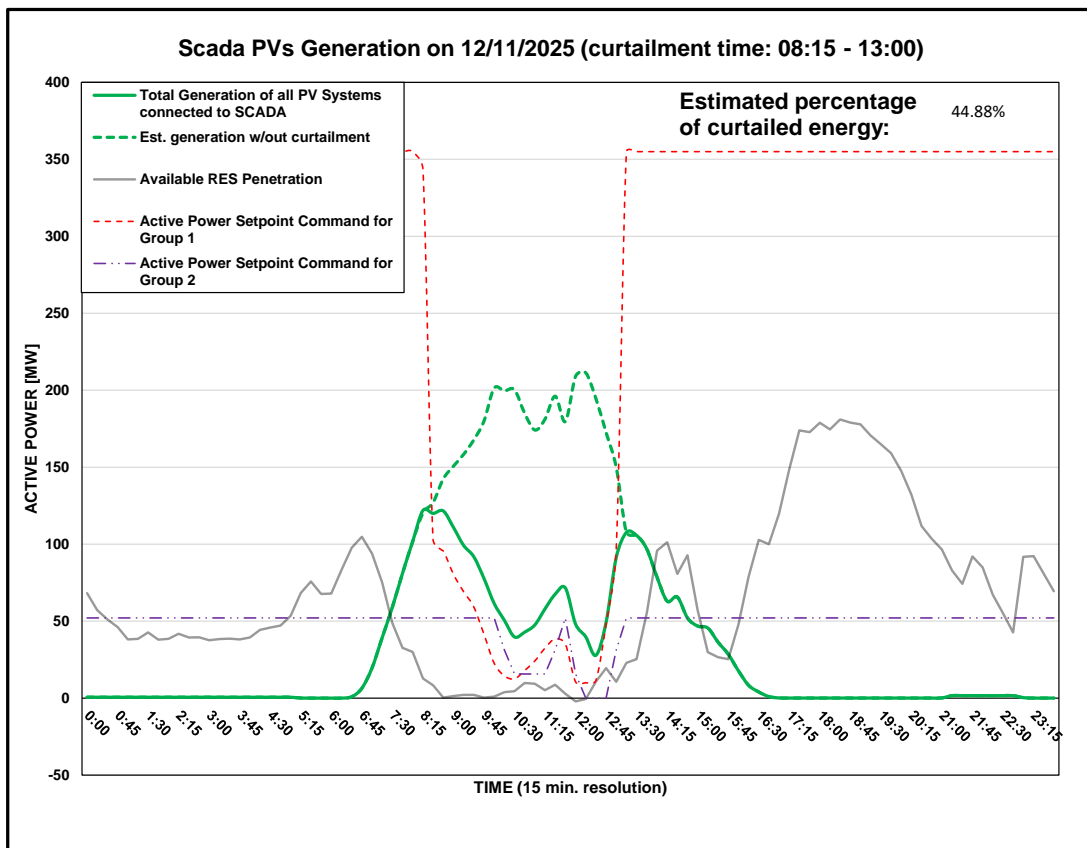


DISTRIBUTION SYSTEM OPERATOR SYSTEM OPERATION



PV Generation Curtailment Report

| | | |
|---|--|--|
| Date of Curtailment: | 12/11/2025 | <u>Cut-off of PV Systems using RIPPLE and IoT:</u> |
| Start of Curtailment (G1 - non Priority) | 8:15 | |
| Start of Curtailment (G2 - Priority) | 10:15 | Cut-off areas using RIPPLE: NIC 2 Cut-off areas using IoT: PV -ARTICLE 22 |
| End of Curtailment (G1 - non Priority) | 13:00 | |
| End of Curtailment (G2 - Priority) | 13:00 | |
| Instruction from TSOC | YES | Start of cut-off: 10:30 End of cut-off: 14:30 |
| Reason of Curtailment: | RES-E Generation Restriction due to low loading of the electrical system | |
| Total Estimated Energy of the day: | 1148.5 MWh | Total Est. Energy of the cut-off PV systems using RIPPLE: 3MWh |
| Total Estimated Curtailed Energy: | 515.5 MWh | Total Est. Energy of the cut-off PV systems using IoT: 8.3MWh |
| Percentage of Curtailed Energy: | 44.88% | |



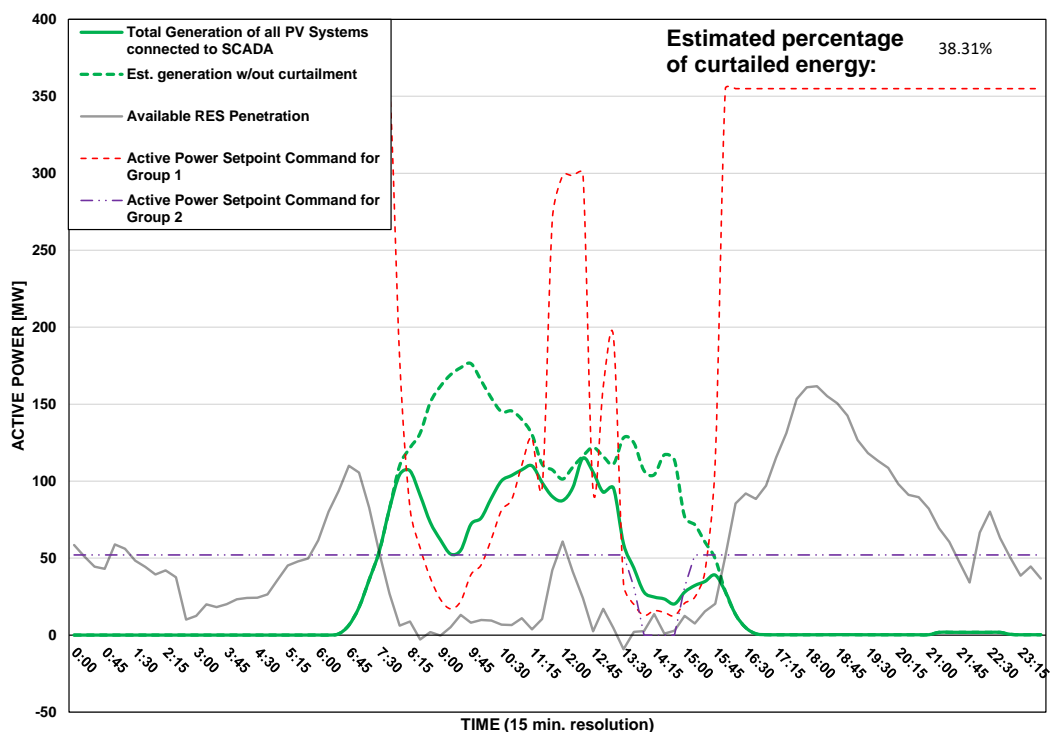
DISTRIBUTION SYSTEM OPERATOR SYSTEM OPERATION



PV Generation Curtailment Report

| | | |
|--|--|---|
| Date of Curtailment: | 13/11/2025 | Cut-off of PV Systems using IoT: |
| Start of Curtailment (G1 - non Priority) | 8:00 | |
| Start of Curtailment (G2 - Priority) | 13:45 | Cut-off areas using IoT: PV -ARTICLE 22 |
| End of Curtailment (G1 - non Priority) | 15:45 | |
| End of Curtailment (G2 - Priority) | 15:00 | |
| Instruction from TSOC | YES | Start of cut-off: 13:45 End of cut-off: 16:00 |
| Reason of Curtailment: | RES-E Generation Restriction due to low loading of the electrical system | |
| Total Estimated Energy of the day: | 1047.4 MWh | |
| Total Estimated Curtailed Energy: | 401.2 MWh | Total Est. Energy of the cut-off PV systems using IoT: 2.3MWh |
| Percentage of Curtailed Energy: | 38.31% | |

Scada PVs Generation on 13/11/2025 (curtailment time: 08:00 - 15:45)



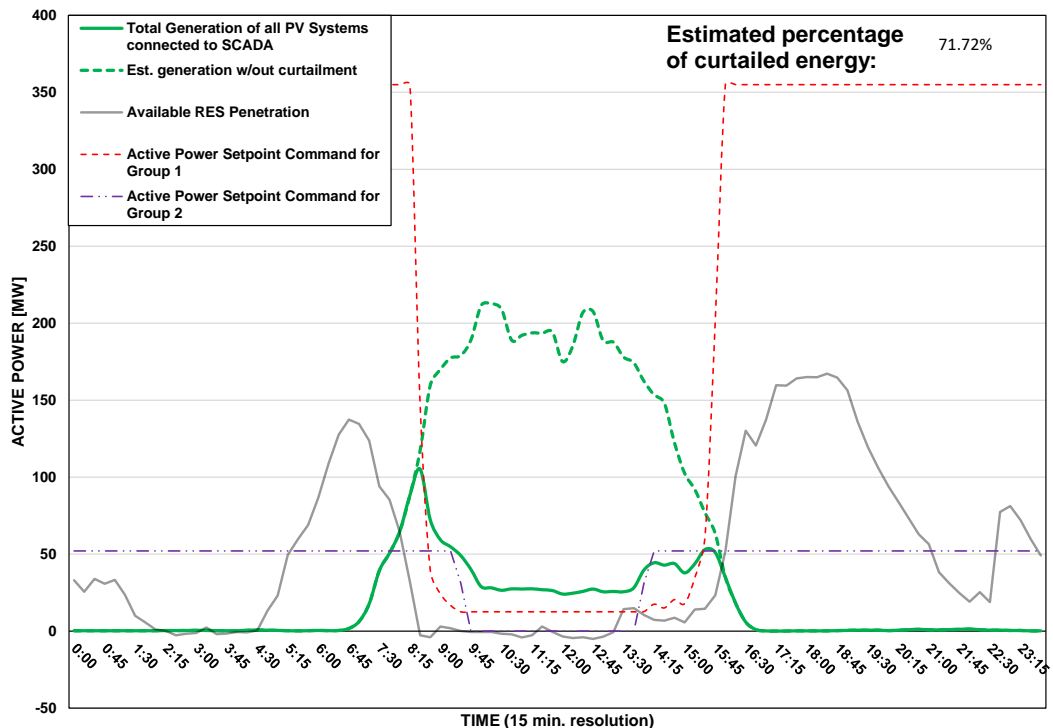
DISTRIBUTION SYSTEM OPERATOR SYSTEM OPERATION



PV Generation Curtailment Report

| | | |
|--|--|---|
| Date of Curtailment: | 14/11/2025 | Cut-off of PV Systems using RIPPLE and IoT: |
| Start of Curtailment (G1 - non Priority) | 8:30 | |
| Start of Curtailment (G2 - Priority) | 9:30 | Cut-off areas using RIPPLE: LIM 1, PAF 2 Cut-off areas using IoT: PV-LCA/FAM1, PV-LCA/FAM3, PV -ARTICLE 22 |
| End of Curtailment (G1 - non Priority) | 15:45 | |
| End of Curtailment (G2 - Priority) | 14:00 | |
| Instruction from TSOC | YES | Start of cut-off: 09:30 End of cut-off: 16:00 |
| Reason of Curtailment: | RES-E Generation Restriction due to low loading of the electrical system | |
| Total Estimated Energy of the day: | 1342 MWh | Total Est. Energy of the cut-off PV systems using RIPPLE: 43.3MWh |
| Total Estimated Curtailed Energy: | 962.4 MWh | Total Est. Energy of the cut-off PV systems using IoT: 61MWh |
| Percentage of Curtailed Energy: | 71.72% | |

Scada PVs Generation on 14/11/2025 (curtailment time: 08:30 - 15:45)



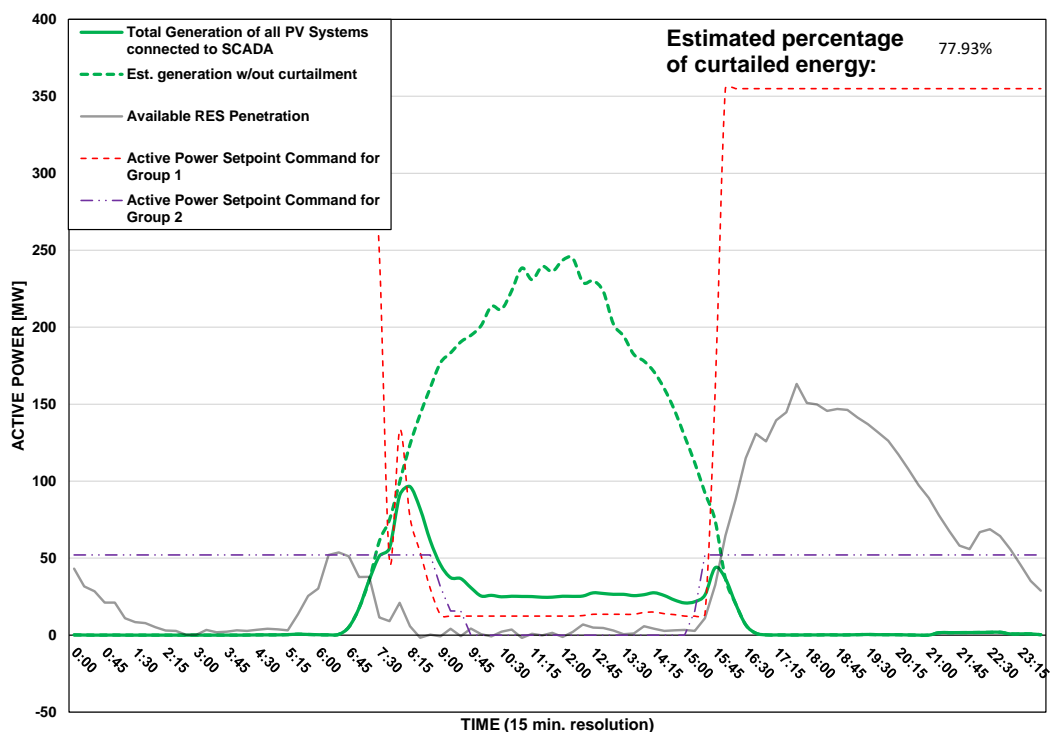
DISTRIBUTION SYSTEM OPERATOR SYSTEM OPERATION



PV Generation Curtailment Report

| | | |
|--|--|--|
| Date of Curtailment: | 15/11/2025 | Cut-off of PV Systems using RIPPLE and IoT: |
| Start of Curtailment (G1 - non Priority) | 7:30 | |
| Start of Curtailment (G2 - Priority) | 9:00 | Cut-off areas using RIPPLE: NIC 1, NIC 3 Cut-off areas using IoT: PV-PAF3, PV -ARTICLE 22 |
| End of Curtailment (G1 - non Priority) | 15:45 | |
| End of Curtailment (G2 - Priority) | 15:15 | |
| Instruction from TSOC | YES | Start of cut-off: 09:00 End of cut-off: 15:45 |
| Reason of Curtailment: | RES-E Generation Restriction due to low loading of the electrical system | |
| Total Estimated Energy of the day: | 1540.4 MWh | Total Est. Energy of the cut-off PV systems using RIPPLE: 98.8MWh |
| Total Estimated Curtailed Energy: | 1200.5 MWh | Total Est. Energy of the cut-off PV systems using IoT: 28MWh |
| Percentage of Curtailed Energy: | 77.93% | |

Scada PVs Generation on 15/11/2025 (curtailment time: 07:30 - 15:45)

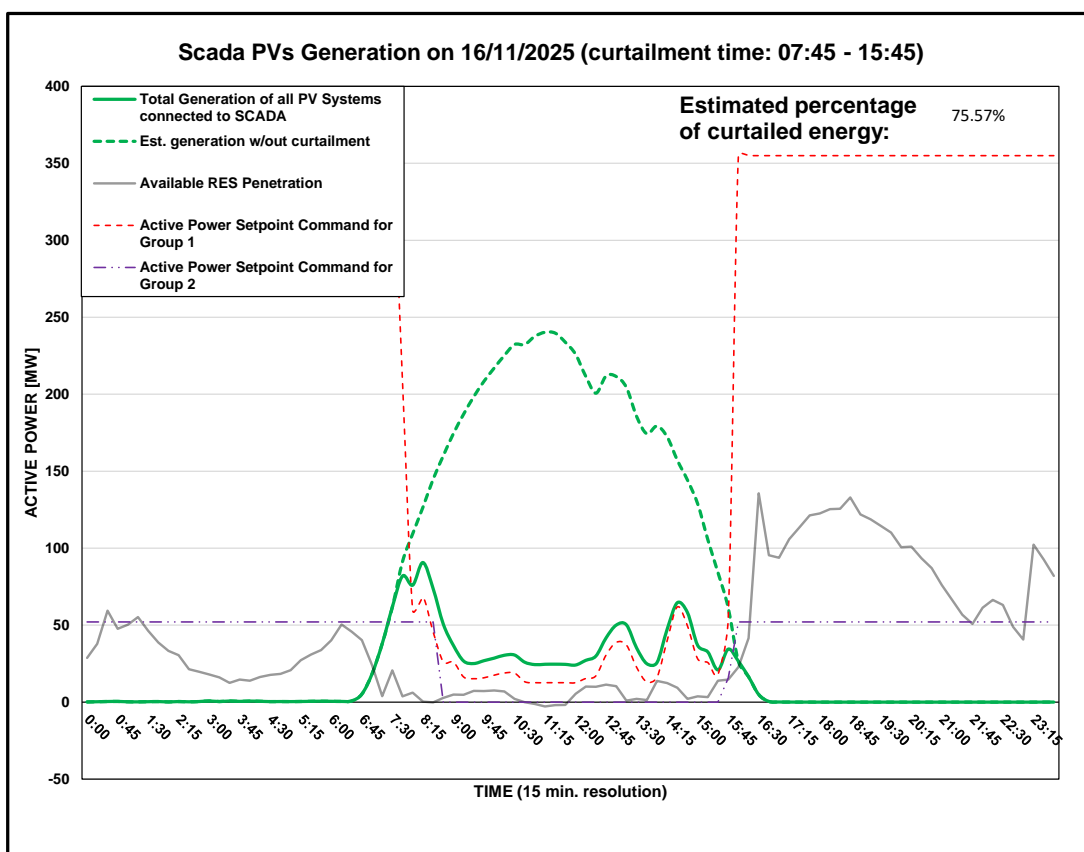


DISTRIBUTION SYSTEM OPERATOR SYSTEM OPERATION



PV Generation Curtailment Report

| | | |
|--|--|---|
| Date of Curtailment: | 16/11/2025 | Cut-off of PV Systems using RIPPLE and IoT: |
| Start of Curtailment (G1 - non Priority) | 7:45 | |
| Start of Curtailment (G2 - Priority) | 8:45 | Cut-off areas using RIPPLE: NIC 1, NIC 3, LAR 1, LAR 2, LIM 1 Cut-off areas using IoT: PV-PAF3, PV -ARTICLE 22 |
| End of Curtailment (G1 - non Priority) | 15:45 | |
| End of Curtailment (G2 - Priority) | 15:45 | |
| Instruction from TSOC | YES | Start of cut-off: 07:15 End of cut-off: 16:15 |
| Reason of Curtailment: | RES-E Generation Restriction due to low loading of the electrical system | |
| Total Estimated Energy of the day: | 1525.5 MWh | Total Est. Energy of the cut-off PV systems using RIPPLE: 274.2MWh |
| Total Estimated Curtailed Energy: | 1152.8 MWh | Total Est. Energy of the cut-off PV systems using IoT: 32.4MWh |
| Percentage of Curtailed Energy: | 75.57% | |



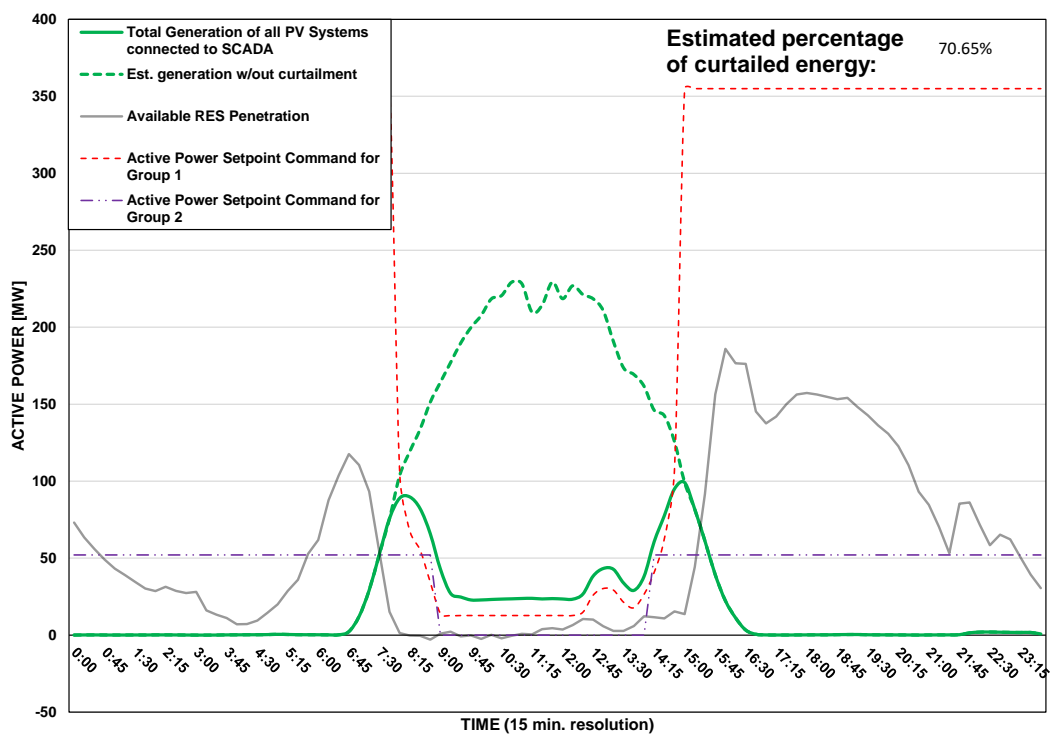
DISTRIBUTION SYSTEM OPERATOR SYSTEM OPERATION



PV Generation Curtailment Report

| | | |
|---|--|---|
| Date of Curtailment: | 17/11/2025 | <u>Cut-off of PV Systems using RIPPLE and IoT:</u> |
| Start of Curtailment (G1 - non Priority) | 8:00 | |
| Start of Curtailment (G2 - Priority) | 8:45 | Cut-off areas using RIPPLE: NIC 2, LIM 2, PAF 1 Cut-off areas using IoT: PV-NIC1, PV-NIC3, PV-NIC4, PV-LCA/FAM2, PV-PAF1, PV -ARTICLE 22 |
| End of Curtailment (G1 - non Priority) | 14:45 | |
| End of Curtailment (G2 - Priority) | 14:00 | |
| Instruction from TSOC | YES | Start of cut-off: 09:30 End of cut-off: 15:15 |
| Reason of Curtailment: | RES-E Generation Restriction due to low loading of the electrical system | |
| Total Estimated Energy of the day: | 1429.1 MWh | Total Est. Energy of the cut-off PV systems using RIPPLE: 88.7MWh |
| Total Estimated Curtailed Energy: | 1009.6 MWh | Total Est. Energy of the cut-off PV systems using IoT: 135.3MWh |
| Percentage of Curtailed Energy: | 70.65% | |

Scada PVs Generation on 17/11/2025 (curtailment time: 08:00 - 14:45)



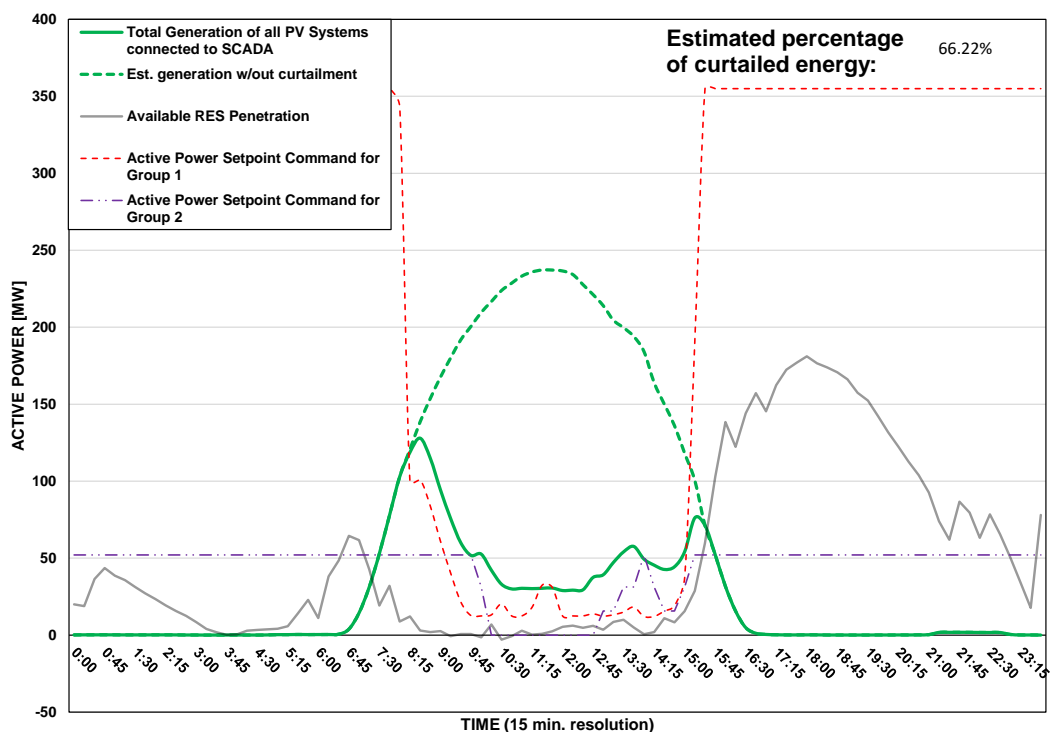
DISTRIBUTION SYSTEM OPERATOR SYSTEM OPERATION



PV Generation Curtailment Report

| | | |
|--|--|--|
| Date of Curtailment: | 18/11/2025 | Cut-off of PV Systems using RIPPLE and IoT: |
| Start of Curtailment (G1 - non Priority) | 8:00 | |
| Start of Curtailment (G2 - Priority) | 10:00 | Cut-off areas using RIPPLE: PAF 2 Cut-off areas using IoT: PV -ARTICLE 22 |
| End of Curtailment (G1 - non Priority) | 15:15 | |
| End of Curtailment (G2 - Priority) | 15:00 | |
| Instruction from TSOC | YES | Start of cut-off: 10:00 End of cut-off: 15:45 |
| Reason of Curtailment: | RES-E Generation Restriction due to low loading of the electrical system | |
| Total Estimated Energy of the day: | 1510.5 MWh | Total Est. Energy of the cut-off PV systems using RIPPLE: 17.4MWh |
| Total Estimated Curtailed Energy: | 1000.2 MWh | Total Est. Energy of the cut-off PV systems using IoT: 14MWh |
| Percentage of Curtailed Energy: | 66.22% | |

Scada PVs Generation on 18/11/2025 (curtailment time: 08:00 - 15:15)



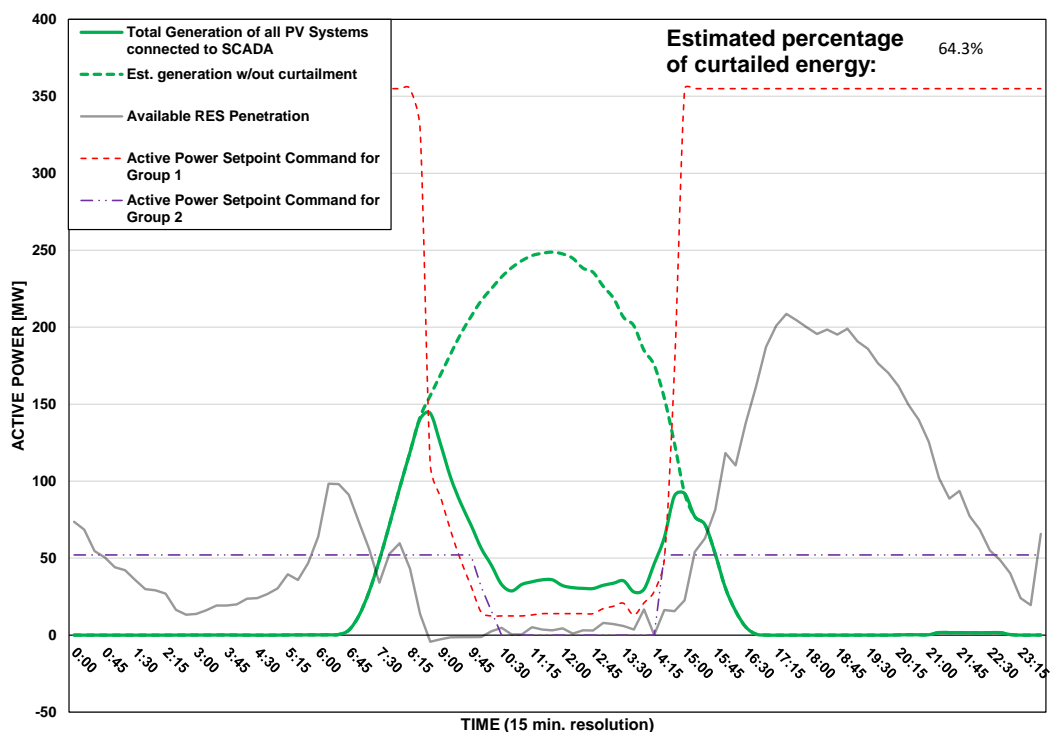
DISTRIBUTION SYSTEM OPERATOR SYSTEM OPERATION



PV Generation Curtailment Report

| | | |
|--|--|--|
| Date of Curtailment: | 19/11/2025 | Cut-off of PV Systems using IoT: |
| Start of Curtailment (G1 - non Priority) | 8:30 | |
| Start of Curtailment (G2 - Priority) | 10:00 | Cut-off areas using IoT: PV-LCA/FAM3, PV -ARTICLE 22 |
| End of Curtailment (G1 - non Priority) | 14:45 | |
| End of Curtailment (G2 - Priority) | 14:15 | |
| Instruction from TSOC | YES | Start of cut-off: 11:15 End of cut-off: 15:15 |
| Reason of Curtailment: | RES-E Generation Restriction due to low loading of the electrical system | |
| Total Estimated Energy of the day: | 1537.8 MWh | |
| Total Estimated Curtailed Energy: | 988.8 MWh | Total Est. Energy of the cut-off PV systems using IoT: 46.9MWh |
| Percentage of Curtailed Energy: | 64.3% | |

Scada PVs Generation on 19/11/2025 (curtailment time: 08:30 - 14:45)

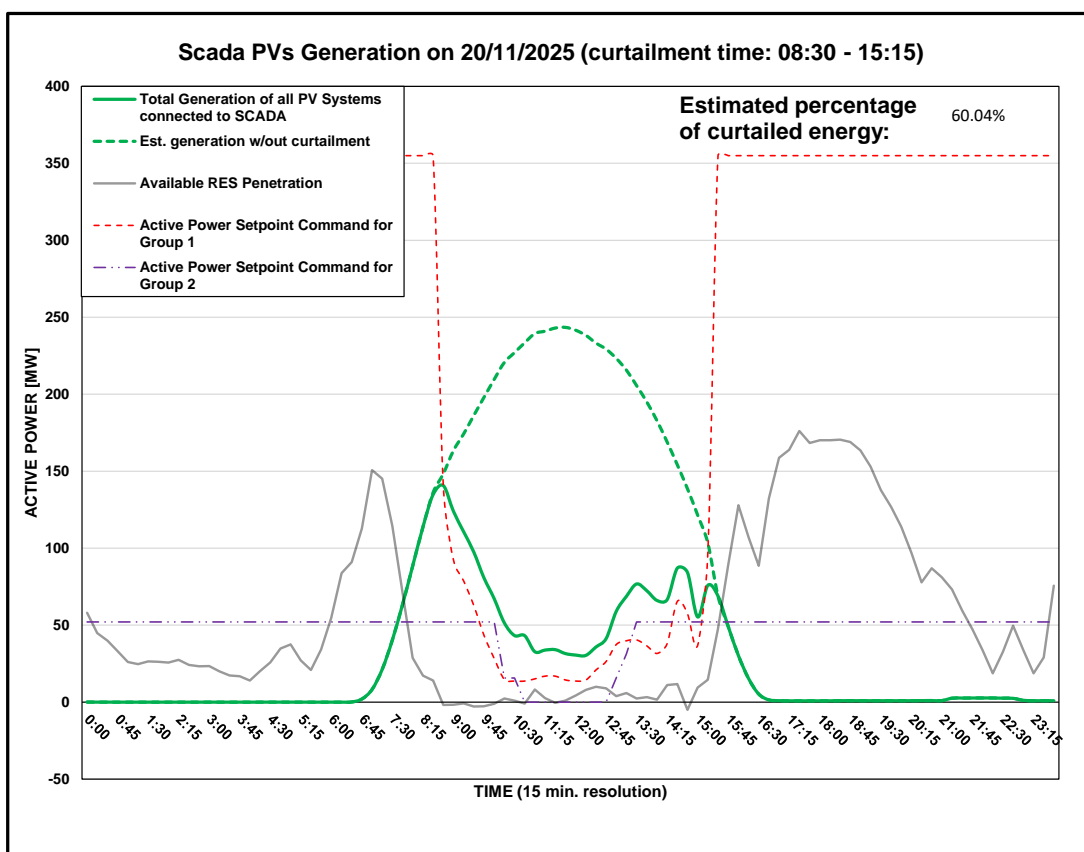


DISTRIBUTION SYSTEM OPERATOR SYSTEM OPERATION



PV Generation Curtailment Report

| | | |
|--|--|--|
| Date of Curtailment: | 20/11/2025 | Cut-off of PV Systems using IoT: |
| Start of Curtailment (G1 - non Priority) | 8:30 | |
| Start of Curtailment (G2 - Priority) | 10:00 | Cut-off areas using IoT: PV -ARTICLE 22 |
| End of Curtailment (G1 - non Priority) | 15:15 | |
| End of Curtailment (G2 - Priority) | 13:15 | |
| Instruction from TSOC | YES | Start of cut-off: 10:45 End of cut-off: 15:45 |
| Reason of Curtailment: | RES-E Generation Restriction due to low loading of the electrical system | |
| Total Estimated Energy of the day: | 1515.4 MWh | |
| Total Estimated Curtailed Energy: | 909.9 MWh | Total Est. Energy of the cut-off PV systems using IoT: 11.6MWh |
| Percentage of Curtailed Energy: | 60.04% | |

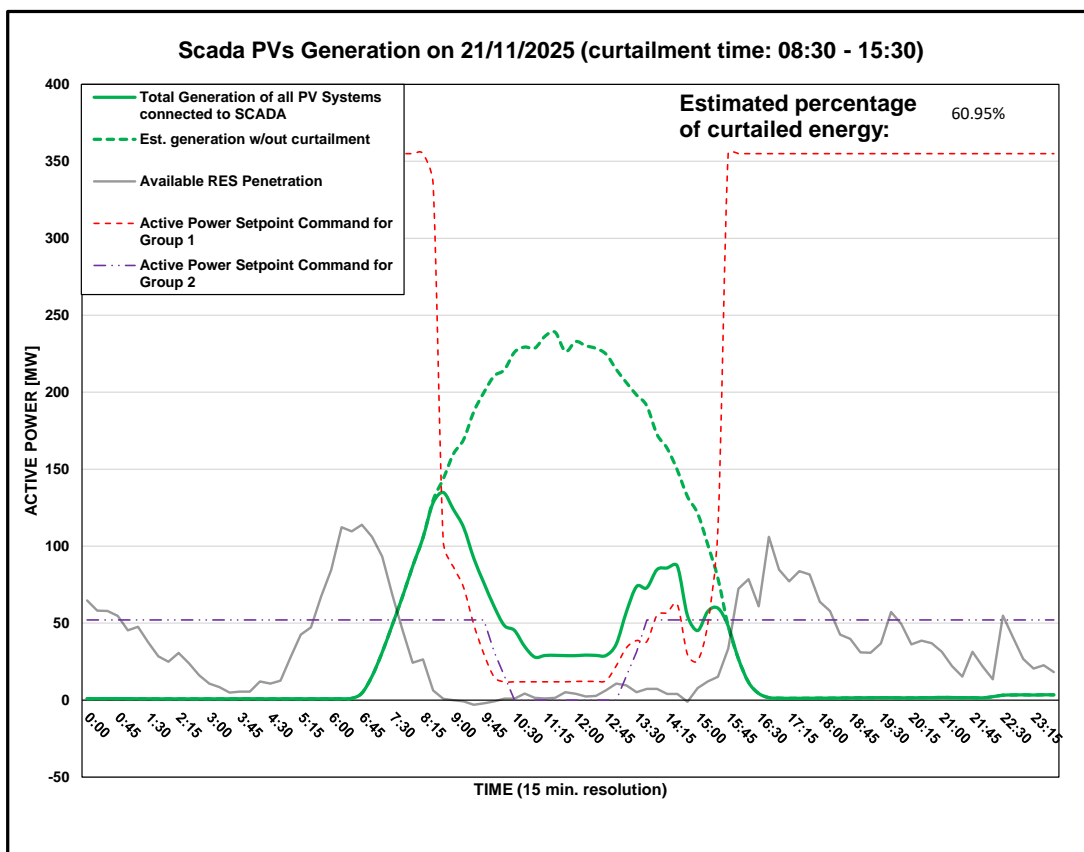


DISTRIBUTION SYSTEM OPERATOR SYSTEM OPERATION



PV Generation Curtailment Report

| | | |
|--|--|--|
| Date of Curtailment: | 21/11/2025 | Cut-off of PV Systems using IoT: |
| Start of Curtailment (G1 - non Priority) | 8:30 | |
| Start of Curtailment (G2 - Priority) | 10:00 | Cut-off areas using IoT: PV -ARTICLE 22 |
| End of Curtailment (G1 - non Priority) | 15:30 | |
| End of Curtailment (G2 - Priority) | 13:30 | |
| Instruction from TSOC | YES | Start of cut-off: 10:15 End of cut-off: 15:30 |
| Reason of Curtailment: | RES-E Generation Restriction due to low loading of the electrical system | |
| Total Estimated Energy of the day: | 1494.4 MWh | |
| Total Estimated Curtailed Energy: | 910.8 MWh | Total Est. Energy of the cut-off PV systems using IoT: 12.6MWh |
| Percentage of Curtailed Energy: | 60.95% | |

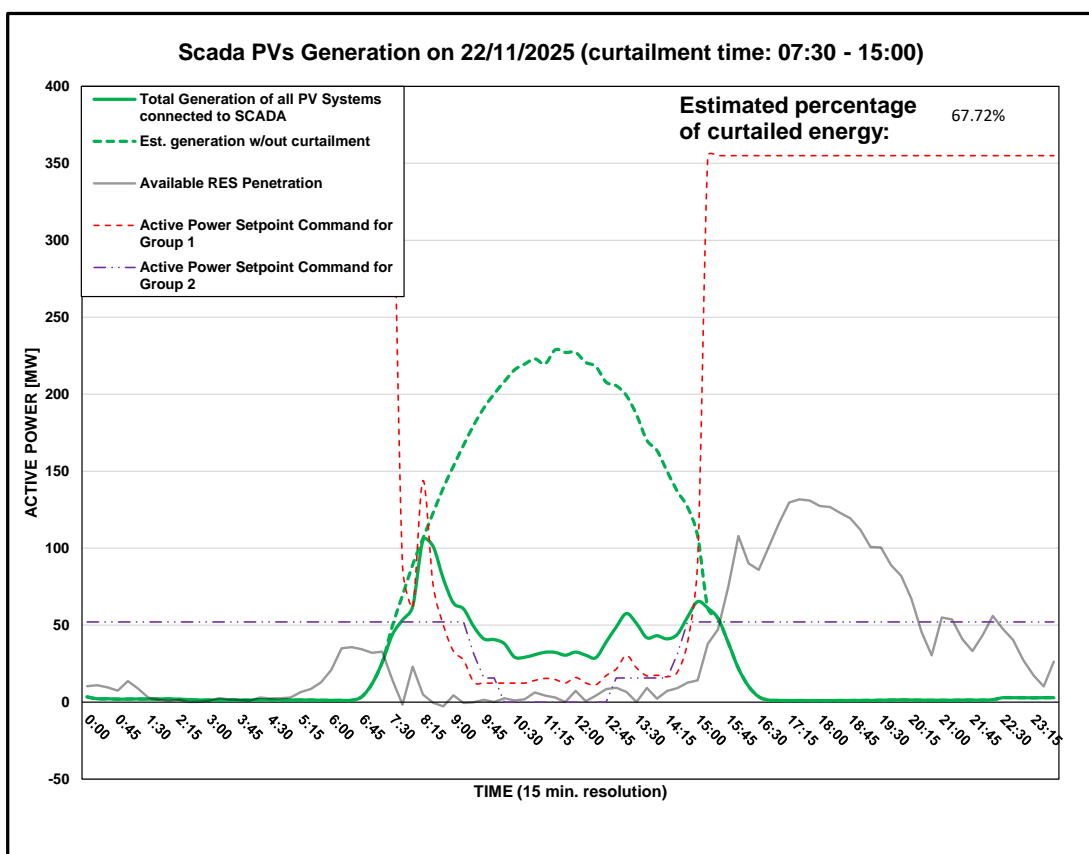


DISTRIBUTION SYSTEM OPERATOR SYSTEM OPERATION



PV Generation Curtailment Report

| | | |
|--|--|--|
| Date of Curtailment: | 22/11/2025 | Cut-off of PV Systems using IoT: |
| Start of Curtailment (G1 - non Priority) | 7:30 | |
| Start of Curtailment (G2 - Priority) | 9:30 | Cut-off areas using IoT: PV-LCA/FAM1, PV-LIM1, PV -ARTICLE 102, PV -PROD 1 |
| End of Curtailment (G1 - non Priority) | 15:00 | |
| End of Curtailment (G2 - Priority) | 14:30 | |
| Instruction from TSOC | YES | Start of cut-off: 07:15 End of cut-off: 15:15 |
| Reason of Curtailment: | RES-E Generation Restriction due to low loading of the electrical system | |
| Total Estimated Energy of the day: | 1413 MWh | |
| Total Estimated Curtailed Energy: | 956.9 MWh | Total Est. Energy of the cut-off PV systems using IoT: 75MWh |
| Percentage of Curtailed Energy: | 67.72% | |



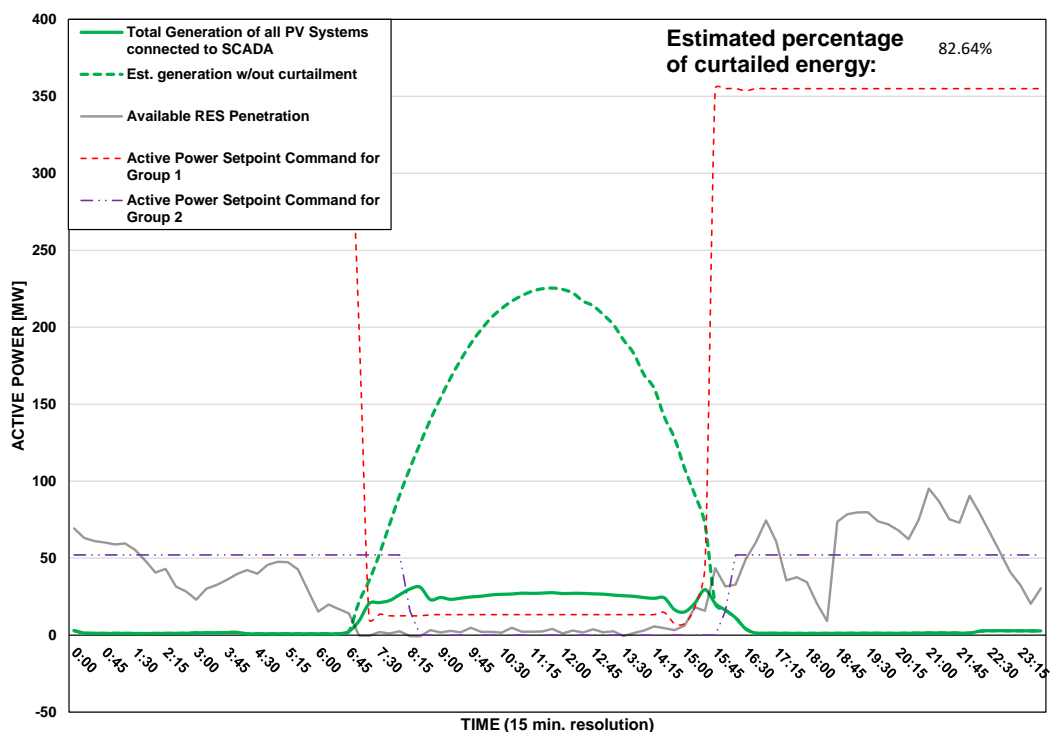
DISTRIBUTION SYSTEM OPERATOR SYSTEM OPERATION



PV Generation Curtailment Report

| | | |
|--|--|--|
| Date of Curtailment: | 23/11/2025 | Cut-off of PV Systems using RIPPLE and IoT: |
| Start of Curtailment (G1 - non Priority) | 7:00 | |
| Start of Curtailment (G2 - Priority) | 8:15 | Cut-off areas using RIPPLE: LAR 1, LAR 2, PAF 1, PAF 2 Cut-off areas using IoT: PV-NIC2, PV-NIC3, PV-LCA/FAM2, PV-LCA/FAM3, PV-LIM3, PV-PAF1, PV -ARTICLE 102, PV -PROD 1 |
| End of Curtailment (G1 - non Priority) | 15:30 | |
| End of Curtailment (G2 - Priority) | 16:00 | |
| Instruction from TSOC | YES | Start of cut-off: 08:30 End of cut-off: 16:15 |
| Reason of Curtailment: | RES-E Generation Restriction due to low loading of the electrical system | |
| Total Estimated Energy of the day: | 1432.4 MWh | Total Est. Energy of the cut-off PV systems using RIPPLE: 231.8MWh |
| Total Estimated Curtailed Energy: | 1183.8 MWh | Total Est. Energy of the cut-off PV systems using IoT: 281.8MWh |
| Percentage of Curtailed Energy: | 82.64% | |

Scada PVs Generation on 23/11/2025 (curtailment time: 07:00 - 15:30)



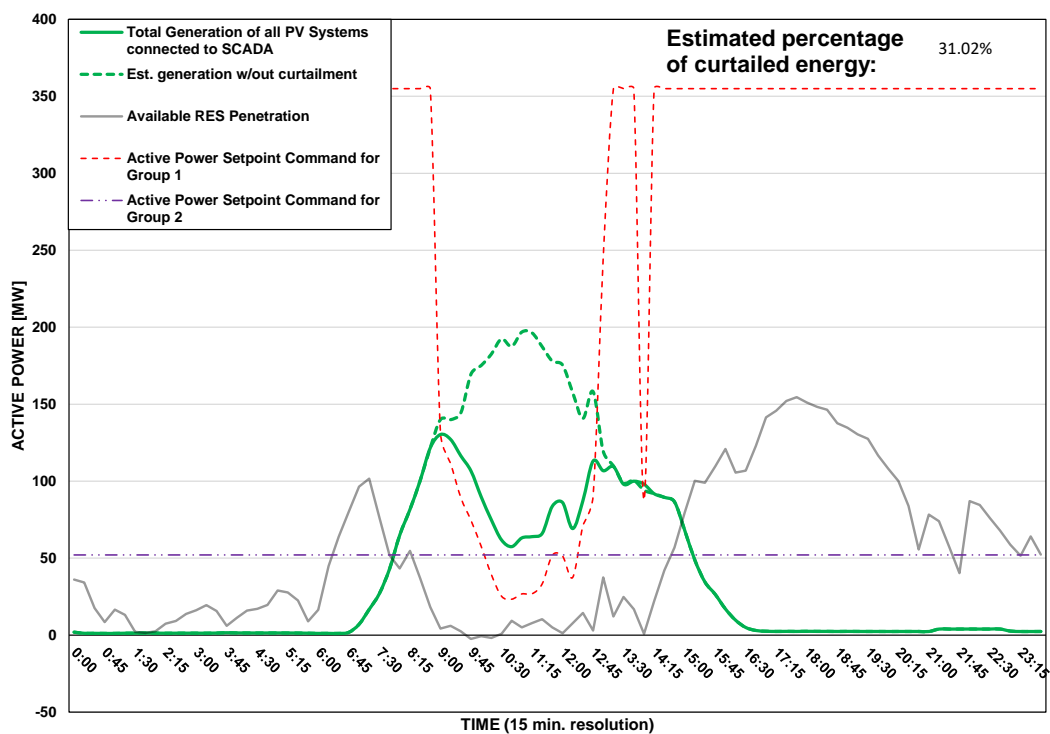
DISTRIBUTION SYSTEM OPERATOR SYSTEM OPERATION



PV Generation Curtailment Report

| | |
|--|--|
| Date of Curtailment: | 24/11/2025 |
| Start of Curtailment (G1 - non Priority) | 9:00 |
| Start of Curtailment (G2 - Priority) | |
| End of Curtailment (G1 - non Priority) | 14:00 |
| End of Curtailment (G2 - Priority) | |
| Instruction from TSOC | YES |
| Reason of Curtailment: | RES-E Generation Restriction due to low loading of the electrical system |
| Total Estimated Energy of the day: | 1075.9 MWh |
| Total Estimated Curtailed Energy: | 333.2 MWh |
| Percentage of Curtailed Energy: | 31.02% |

Scada PVs Generation on 24/11/2025 (curtailment time: 09:00 - 14:00)

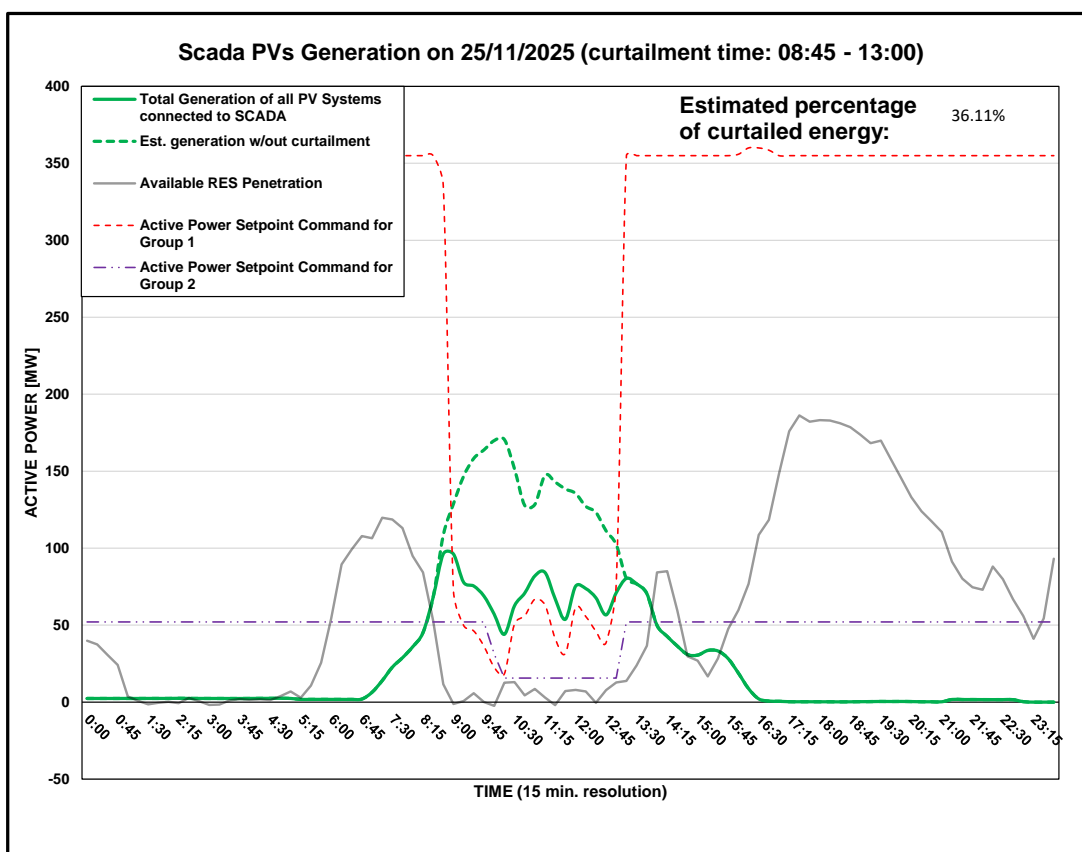


DISTRIBUTION SYSTEM OPERATOR SYSTEM OPERATION



PV Generation Curtailment Report

| | | |
|--|--|---|
| Date of Curtailment: | 25/11/2025 | Cut-off of PV Systems using IoT: |
| Start of Curtailment (G1 - non Priority) | 8:45 | |
| Start of Curtailment (G2 - Priority) | 10:00 | Cut-off areas using IoT: PV -ARTICLE 102 |
| End of Curtailment (G1 - non Priority) | 13:00 | |
| End of Curtailment (G2 - Priority) | 13:00 | |
| Instruction from TSOC | YES | Start of cut-off: 10:15 End of cut-off: 16:15 |
| Reason of Curtailment: | RES-E Generation Restriction due to low loading of the electrical system | |
| Total Estimated Energy of the day: | 832.1 MWh | |
| Total Estimated Curtailed Energy: | 300.5 MWh | Total Est. Energy of the cut-off PV systems using IoT: 6.5MWh |
| Percentage of Curtailed Energy: | 36.11% | |



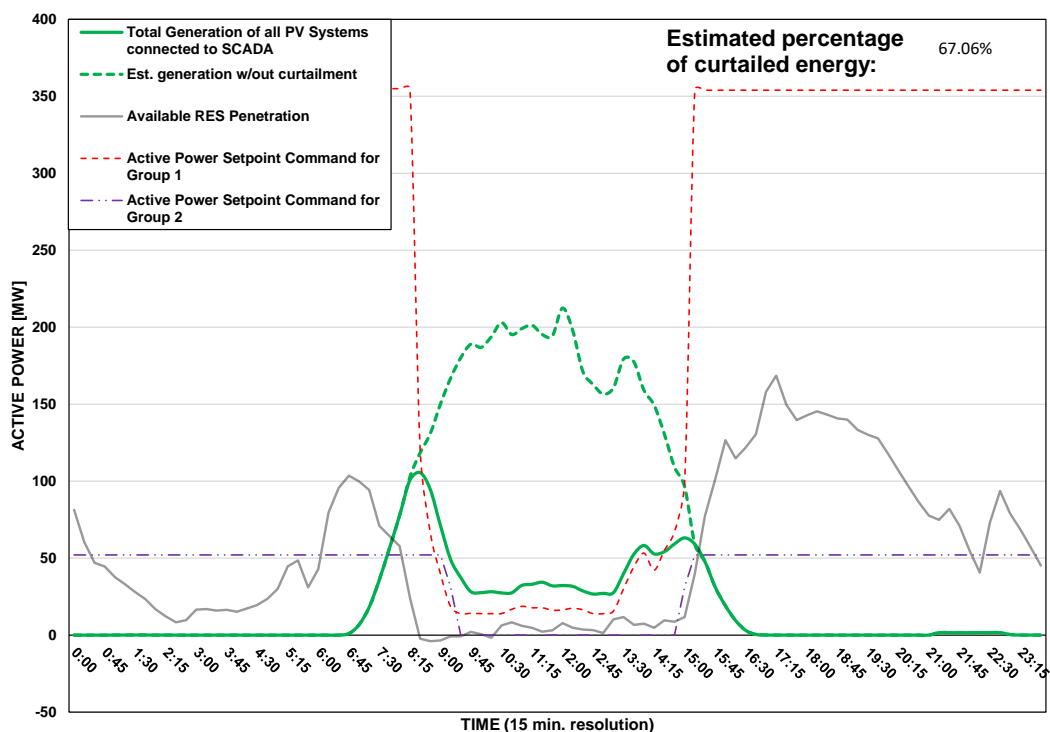
DISTRIBUTION SYSTEM OPERATOR SYSTEM OPERATION



PV Generation Curtailment Report

| | | |
|--|--|--|
| Date of Curtailment: | 26/11/2025 | Cut-off of PV Systems using RIPPLE and IoT: |
| Start of Curtailment (G1 - non Priority) | 8:15 | |
| Start of Curtailment (G2 - Priority) | 9:15 | Cut-off areas using RIPPLE: NIC 1 Cut-off areas using IoT: PV-PAF3, PV -ARTICLE 102 |
| End of Curtailment (G1 - non Priority) | 15:00 | |
| End of Curtailment (G2 - Priority) | 15:00 | |
| Instruction from TSOC | YES | Start of cut-off: 09:15 End of cut-off: 15:15 |
| Reason of Curtailment: | RES-E Generation Restriction due to low loading of the electrical system | |
| Total Estimated Energy of the day: | 1262.7 MWh | Total Est. Energy of the cut-off PV systems using RIPPLE: 36MWh |
| Total Estimated Curtailed Energy: | 846.8 MWh | Total Est. Energy of the cut-off PV systems using IoT: 26.3MWh |
| Percentage of Curtailed Energy: | 67.06% | |

Scada PVs Generation on 26/11/2025 (curtailment time: 08:15 - 15:00)



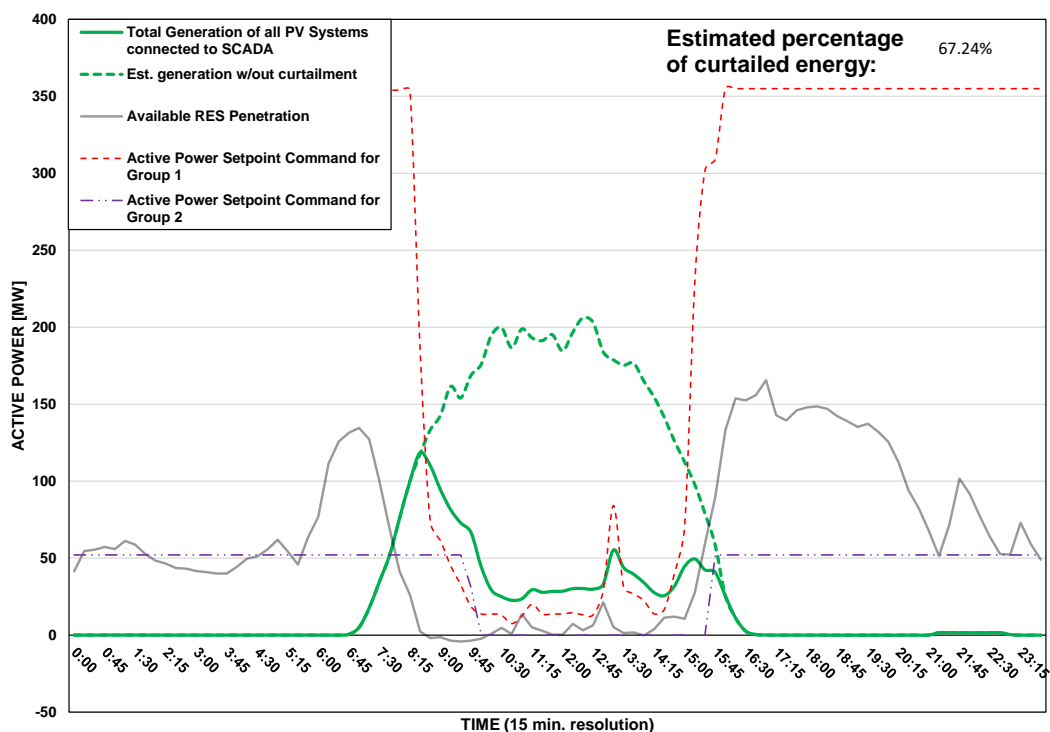
DISTRIBUTION SYSTEM OPERATOR SYSTEM OPERATION



PV Generation Curtailment Report

| | | |
|--|--|---|
| Date of Curtailment: | 27/11/2025 | Cut-off of PV Systems using RIPPLE and IoT: |
| Start of Curtailment (G1 - non Priority) | 8:30 | |
| Start of Curtailment (G2 - Priority) | 9:45 | Cut-off areas using RIPPLE: LIM 1 Cut-off areas using IoT: PV-LCA/FAM1, PV-LIM1, PV -ARTICLE 102, PV -PROD 1 |
| End of Curtailment (G1 - non Priority) | 15:45 | |
| End of Curtailment (G2 - Priority) | 15:30 | |
| Instruction from TSOC | YES | Start of cut-off: 09:45 End of cut-off: 16:00 |
| Reason of Curtailment: | RES-E Generation Restriction due to low loading of the electrical system | |
| Total Estimated Energy of the day: | 1298 MWh | Total Est. Energy of the cut-off PV systems using RIPPLE: 47.6MWh |
| Total Estimated Curtailed Energy: | 872.7 MWh | Total Est. Energy of the cut-off PV systems using IoT: 62.9MWh |
| Percentage of Curtailed Energy: | 67.24% | |

Scada PVs Generation on 27/11/2025 (curtailment time: 08:30 - 15:45)



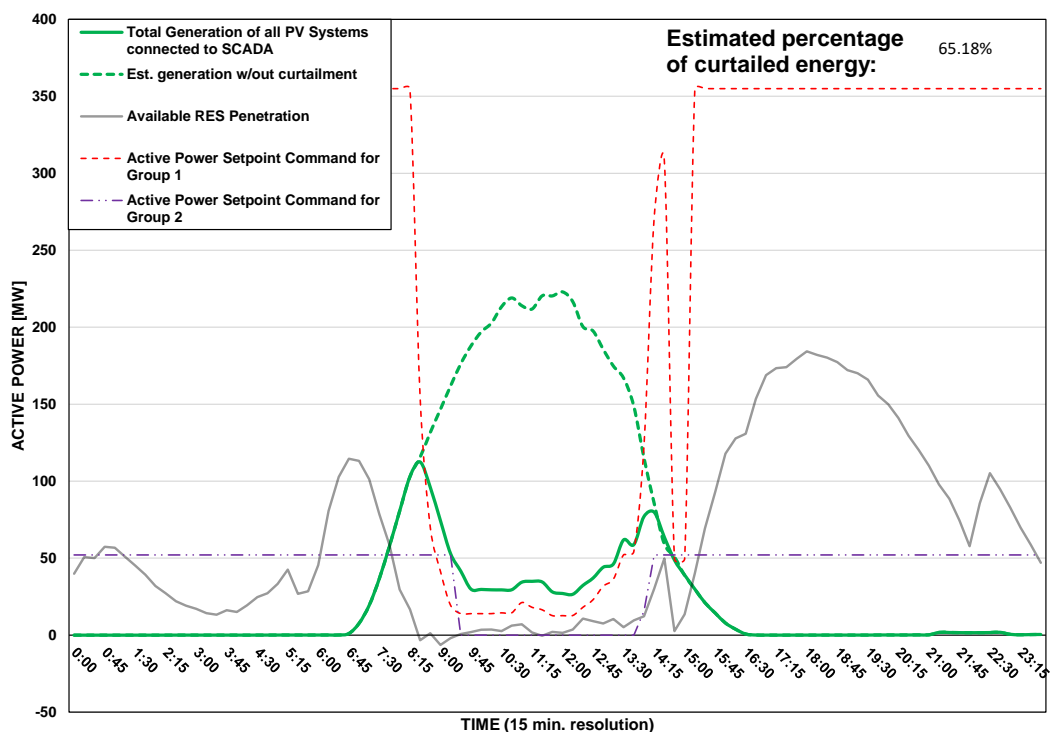
DISTRIBUTION SYSTEM OPERATOR SYSTEM OPERATION



PV Generation Curtailment Report

| | | |
|---|--|---|
| Date of Curtailment: | 28/11/2025 | <u>Cut-off of PV Systems using RIPPLE and IoT:</u> |
| Start of Curtailment (G1 - non Priority) | 8:30 | |
| Start of Curtailment (G2 - Priority) | 9:15 | Cut-off areas using RIPPLE: NIC 1, LAR 2, LIM 2, PAF 2 Cut-off areas using IoT: PV-NIC4, PV-LIM3, PV-PAF3, PV -ARTICLE 102, PV -PROD 1 |
| End of Curtailment (G1 - non Priority) | 15:00 | |
| End of Curtailment (G2 - Priority) | 14:00 | |
| Instruction from TSOC | YES | Start of cut-off: 09:30 End of cut-off: 15:00 |
| Reason of Curtailment: | RES-E Generation Restriction due to low loading of the electrical system | |
| Total Estimated Energy of the day: | 1220.6 MWh | Total Est. Energy of the cut-off PV systems using RIPPLE: 143.4MWh |
| Total Estimated Curtailed Energy: | 795.6 MWh | Total Est. Energy of the cut-off PV systems using IoT: 61.6MWh |
| Percentage of Curtailed Energy: | 65.18% | |

Scada PVs Generation on 28/11/2025 (curtailment time: 08:30 - 15:00)



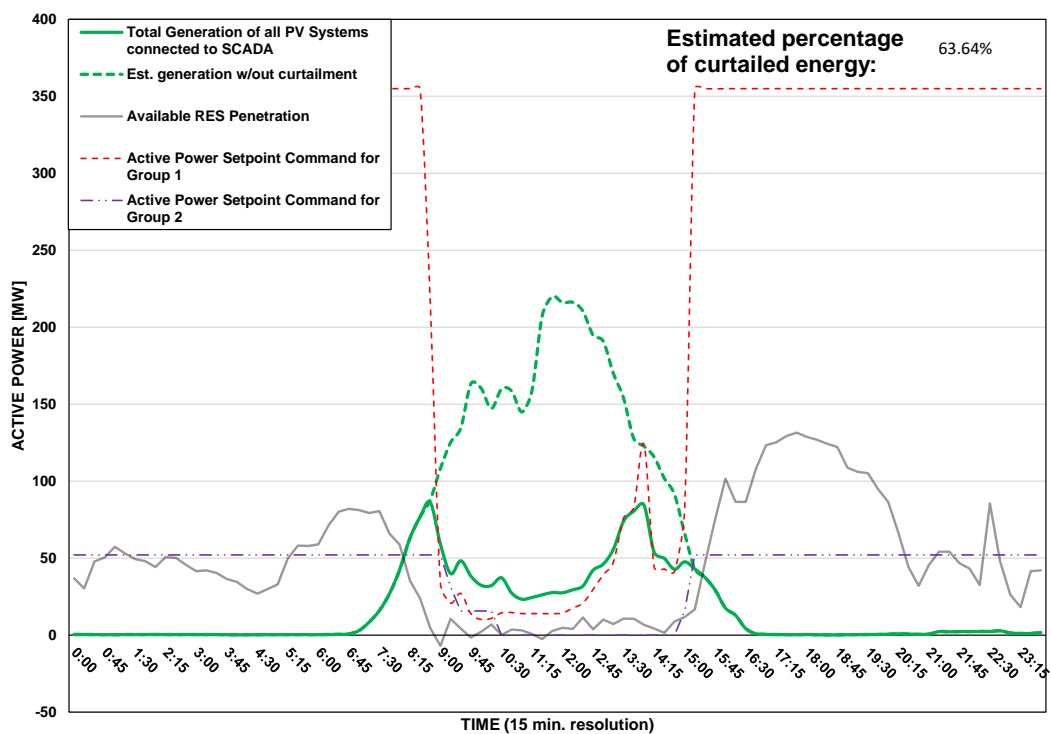
DISTRIBUTION SYSTEM OPERATOR SYSTEM OPERATION



PV Generation Curtailment Report

| | | |
|---|--|--|
| Date of Curtailment: | 29/11/2025 | <u>Cut-off of PV Systems using RIPPLE and IoT:</u> |
| Start of Curtailment (G1 - non Priority) | 8:45 | |
| Start of Curtailment (G2 - Priority) | 9:15 | Cut-off areas using RIPPLE: NIC 2 Cut-off areas using IoT: PV-NIC2, PV-NIC3, PV-LCA/FAM1, PV-LIM1, PV-PAF1, PV -ARTICLE 102 |
| End of Curtailment (G1 - non Priority) | 15:00 | |
| End of Curtailment (G2 - Priority) | 15:00 | |
| Instruction from TSOC | YES | Start of cut-off: 09:15 End of cut-off: 15:30 |
| Reason of Curtailment: | RES-E Generation Restriction due to low loading of the electrical system | |
| Total Estimated Energy of the day: | 1094.2 MWh | Total Est. Energy of the cut-off PV systems using RIPPLE: 22.1MWh |
| Total Estimated Curtailed Energy: | 696.3 MWh | Total Est. Energy of the cut-off PV systems using IoT: 111.3MWh |
| Percentage of Curtailed Energy: | 63.64% | |

Scada PVs Generation on 29/11/2025 (curtailment time: 08:45 - 15:00)



DISTRIBUTION SYSTEM OPERATOR SYSTEM OPERATION



PV Generation Curtailment Report

| | | |
|--|--|---|
| Date of Curtailment: | 30/11/2025 | Cut-off of PV Systems using RIPPLE and IoT: |
| Start of Curtailment (G1 - non Priority) | 7:30 | |
| Start of Curtailment (G2 - Priority) | 8:00 | Cut-off areas using RIPPLE: NIC 1, NIC 3, LAR 2, LIM 1, LIM 2, PAF 2 Cut-off areas using IoT: PV-NIC1, PV-NIC4, PV-LCA/FAM2, PV-LCA/FAM3, PV-LIM3, PV-PAF1, PV-PAF3, PV -ARTICLE 102, PV -PROD 1 |
| End of Curtailment (G1 - non Priority) | 16:00 | |
| End of Curtailment (G2 - Priority) | 16:45 | |
| Instruction from TSOC | YES | Start of cut-off: 09:45 End of cut-off: 16:30 |
| Reason of Curtailment: | RES-E Generation Restriction due to low loading of the electrical system | |
| Total Estimated Energy of the day: | 1060.3 MWh | Total Est. Energy of the cut-off PV systems using RIPPLE: 126MWh |
| Total Estimated Curtailed Energy: | 819 MWh | Total Est. Energy of the cut-off PV systems using IoT: 56MWh |
| Percentage of Curtailed Energy: | 77.24% | |

Scada PVs Generation on 30/11/2025 (curtailment time: 07:30 - 16:00)

