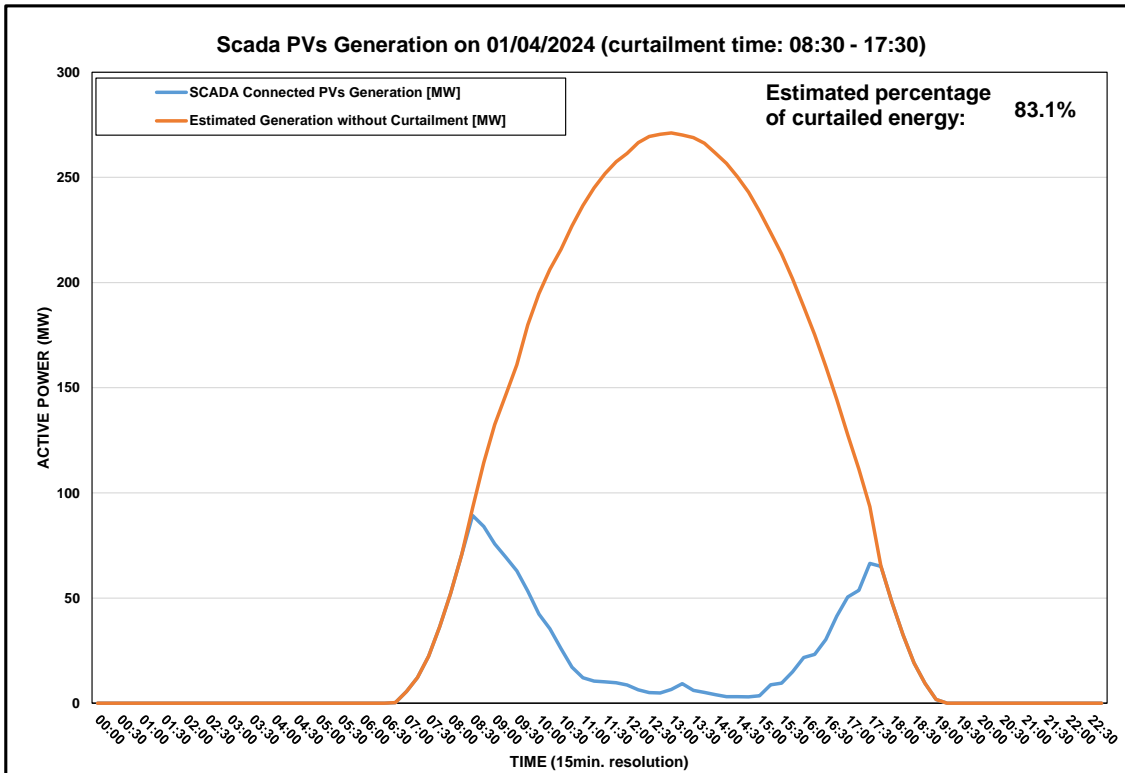


**DISTRIBUTION SYSTEM OPERATOR  
SYSTEM OPERATION**



**Daily Curtailment Report of PV Generation**

Date of Curtailment	01/04/2024	Activation of PV System cut-off from 7.14kW <= P < 500kW: Cut off PV System Group:	NIC 2,PAF-1
Start of Curtailment	08:30	Start of cut-off:	11:00
End of Curtailment	17:30	End of cut-off:	16:00
Instruction from TSOC	YES		
Reason of Curtailment	RES-E Generation Restriction due to low loading of the electrical system		
Total Estimated Energy of the day:	2016.7 MWh	Total Estimated cut-off energy regarding PV Systems from 7.14kW <= P < 500kW:	121.9 MWh
Total Estimated Curtailed Energy:	1676.2 MWh		
Percentage of Curtailed Energy	83.1%		

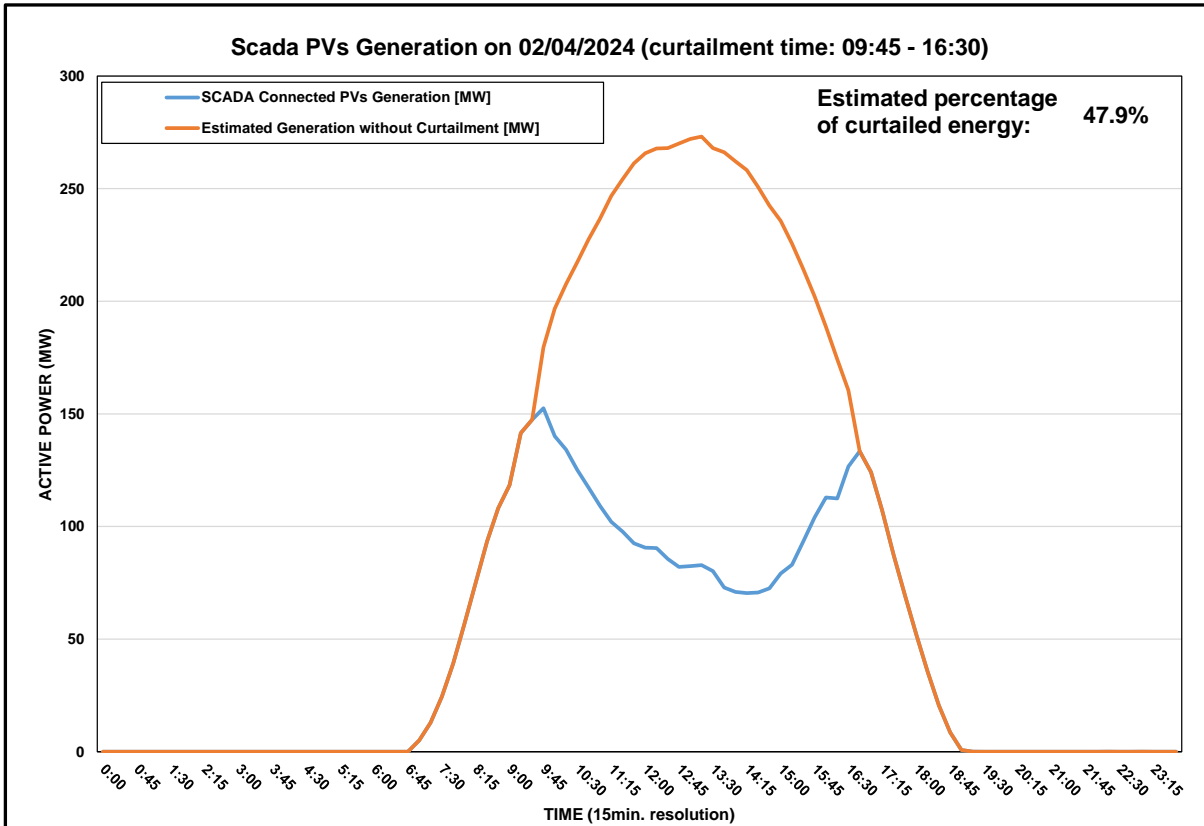


# DISTRIBUTION SYSTEM OPERATOR SYSTEM OPERATION



## Daily Curtailment Report of PV Generation

Date of Curtailment	02/04/2024
Start of Curtailment	9:45
End of Curtailment	16:30
Instruction from TSOC	YES
Reason of Curtailment	RES-E Generation Restriction due to low loading of the electrical system
Total Estimated Energy of the day:	2013.6 MWh
Total Estimated Curtailed Energy:	964.9 MWh
Percentage of Curtailed Energy	47.9%

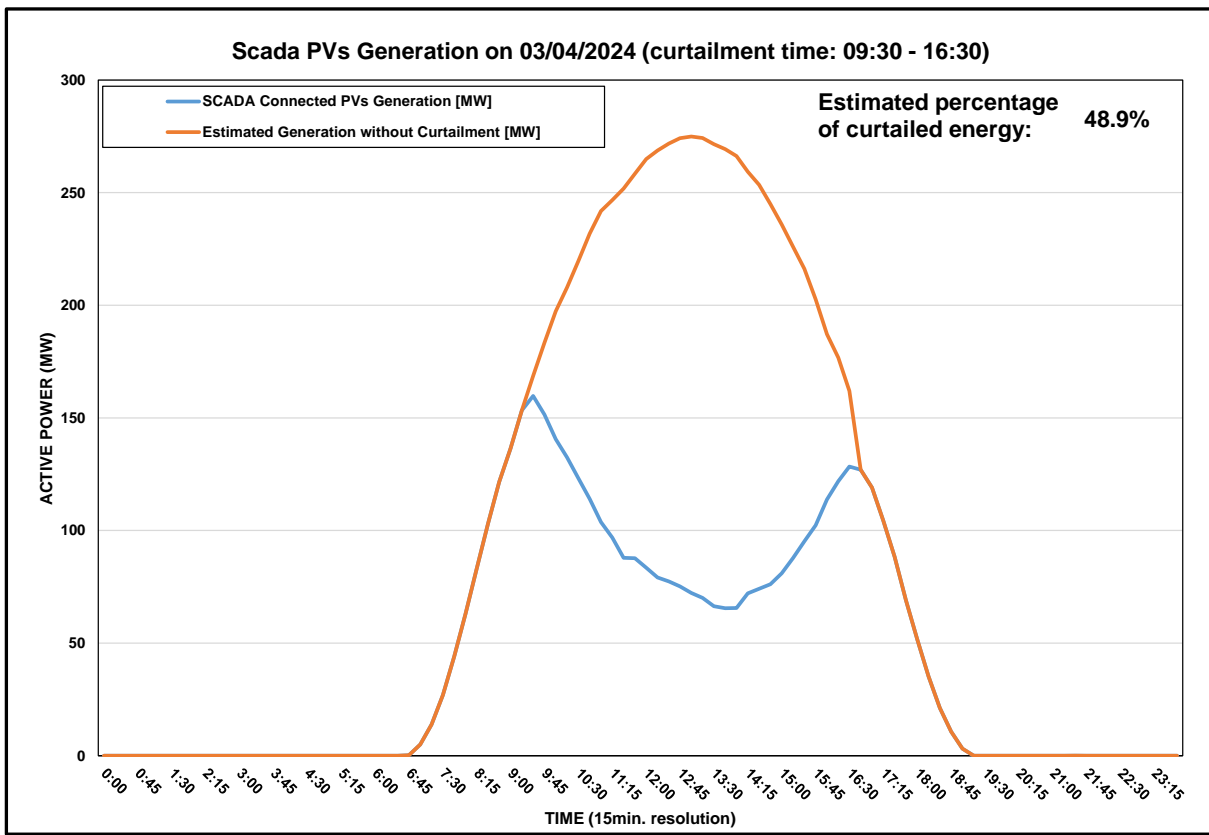


# DISTRIBUTION SYSTEM OPERATOR SYSTEM OPERATION



## Daily Curtailment Report of PV Generation

<b>Date of Curtailment</b>	03/04/2024
<b>Start of Curtailment</b>	9:30
<b>End of Curtailment</b>	16:30
<b>Instruction from TSOC</b>	YES
<b>Reason of Curtailment</b>	RES-E Generation Restriction due to low loading of the electrical system
<b>Total Estimated Energy of the day:</b>	2047 MWh
<b>Total Estimated Curtailed Energy:</b>	1000.7 MWh
<b>Percentage of Curtailed Energy</b>	48.9%

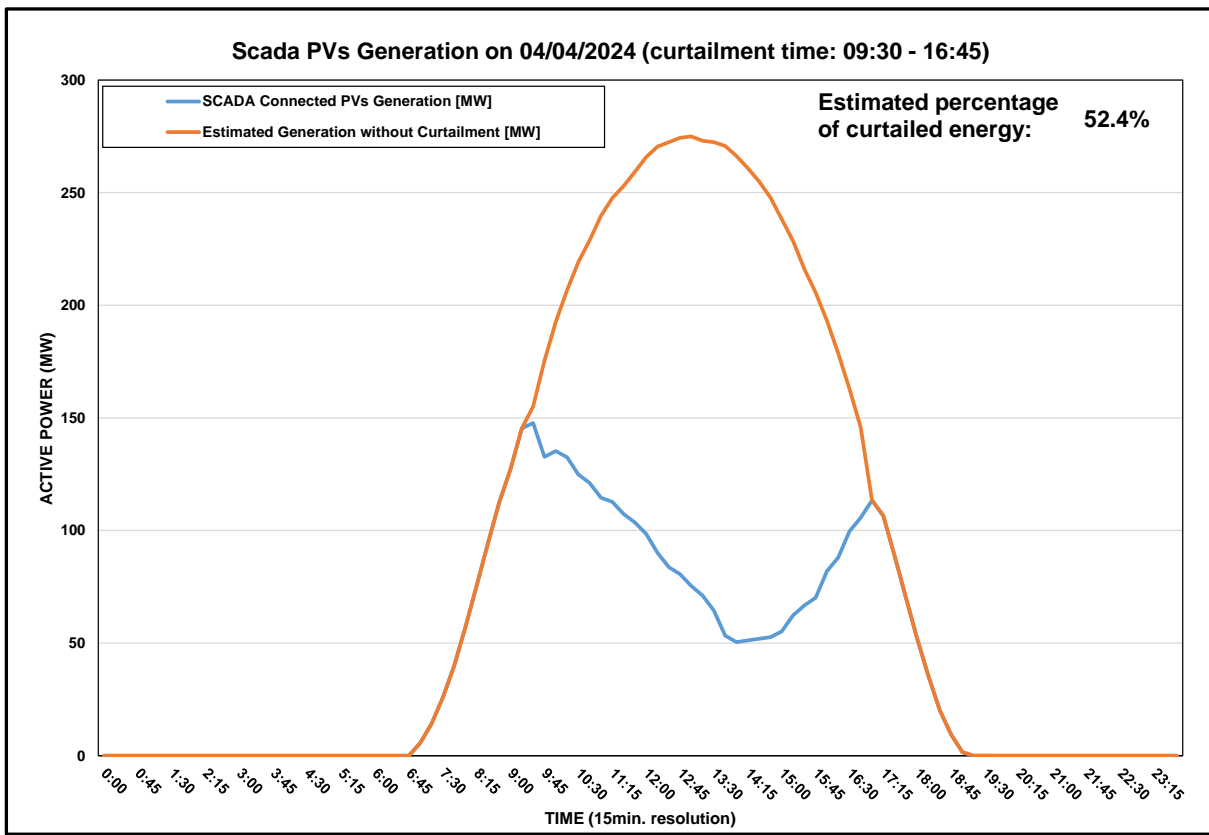


# DISTRIBUTION SYSTEM OPERATOR SYSTEM OPERATION



## Daily Curtailment Report of PV Generation

<b>Date of Curtailment</b>	04/04/2024
<b>Start of Curtailment</b>	9:30
<b>End of Curtailment</b>	16:45
<b>Instruction from TSOC</b>	YES
<b>Reason of Curtailment</b>	RES-E Generation Restriction due to low loading of the electrical system
<b>Total Estimated Energy of the day:</b>	2036.5 MWh
<b>Total Estimated Curtailed Energy:</b>	1066.4 MWh
<b>Percentage of Curtailed Energy</b>	52.4%

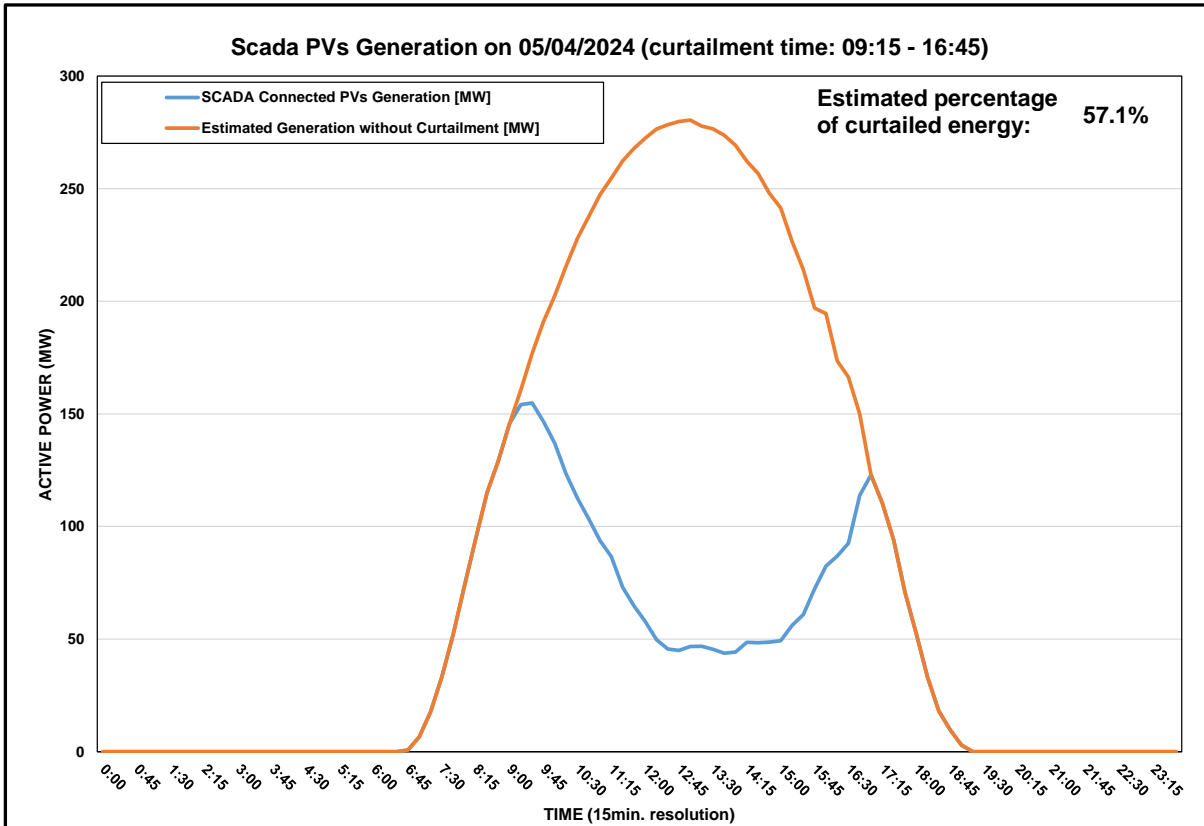


# DISTRIBUTION SYSTEM OPERATOR SYSTEM OPERATION



## Daily Curtailment Report of PV Generation

<b>Date of Curtailment</b>	05/04/2024
<b>Start of Curtailment</b>	9:15
<b>End of Curtailment</b>	16:45
<b>Instruction from TSOC</b>	YES
<b>Reason of Curtailment</b>	RES-E Generation Restriction due to low loading of the electrical system
<b>Total Estimated Energy of the day:</b>	2110.5 MWh
<b>Total Estimated Curtailed Energy:</b>	1206 MWh
<b>Percentage of Curtailed Energy</b>	57.1%

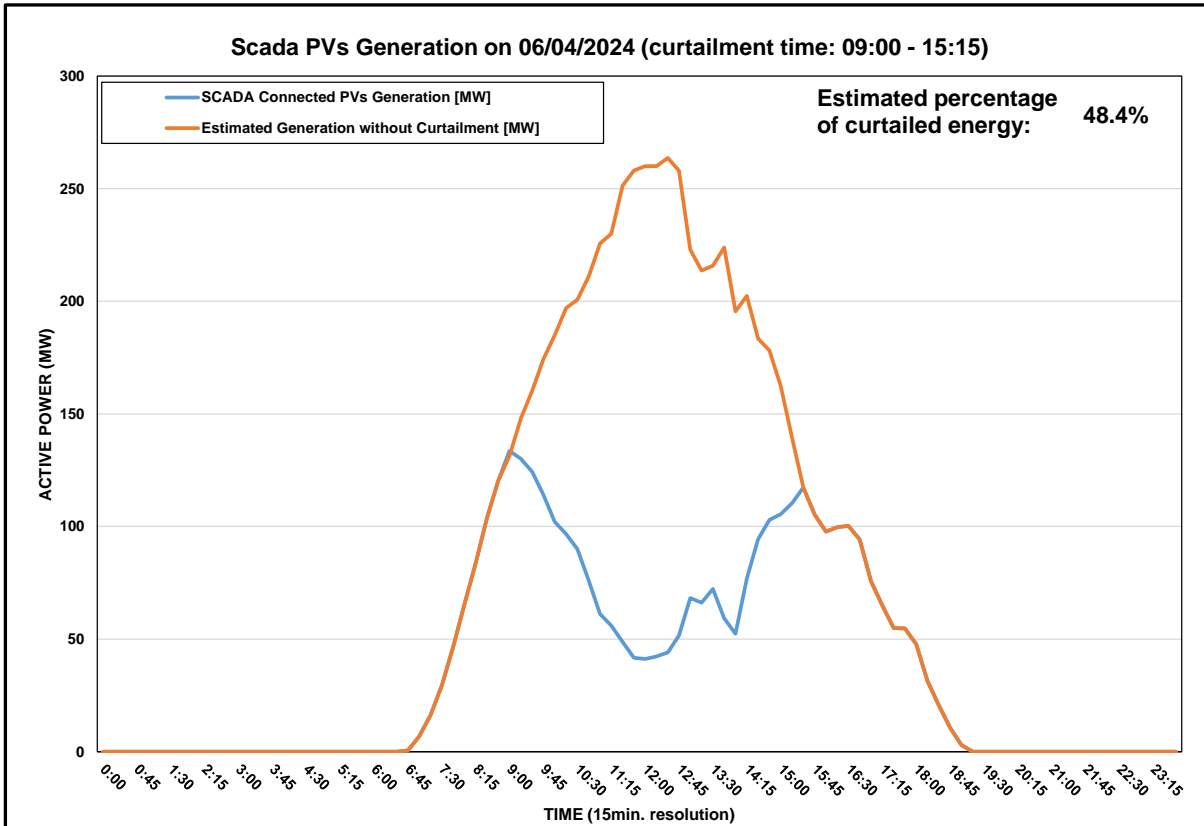


# DISTRIBUTION SYSTEM OPERATOR SYSTEM OPERATION



## Daily Curtailment Report of PV Generation

<b>Date of Curtailment</b>	06/04/2024
<b>Start of Curtailment</b>	9:00
<b>End of Curtailment</b>	15:15
<b>Instruction from TSOC</b>	YES
<b>Reason of Curtailment</b>	RES-E Generation Restriction due to low loading of the electrical system
<b>Total Estimated Energy of the day:</b>	1700.7 MWh
<b>Total Estimated Curtailed Energy:</b>	822.4 MWh
<b>Percentage of Curtailed Energy</b>	48.4%

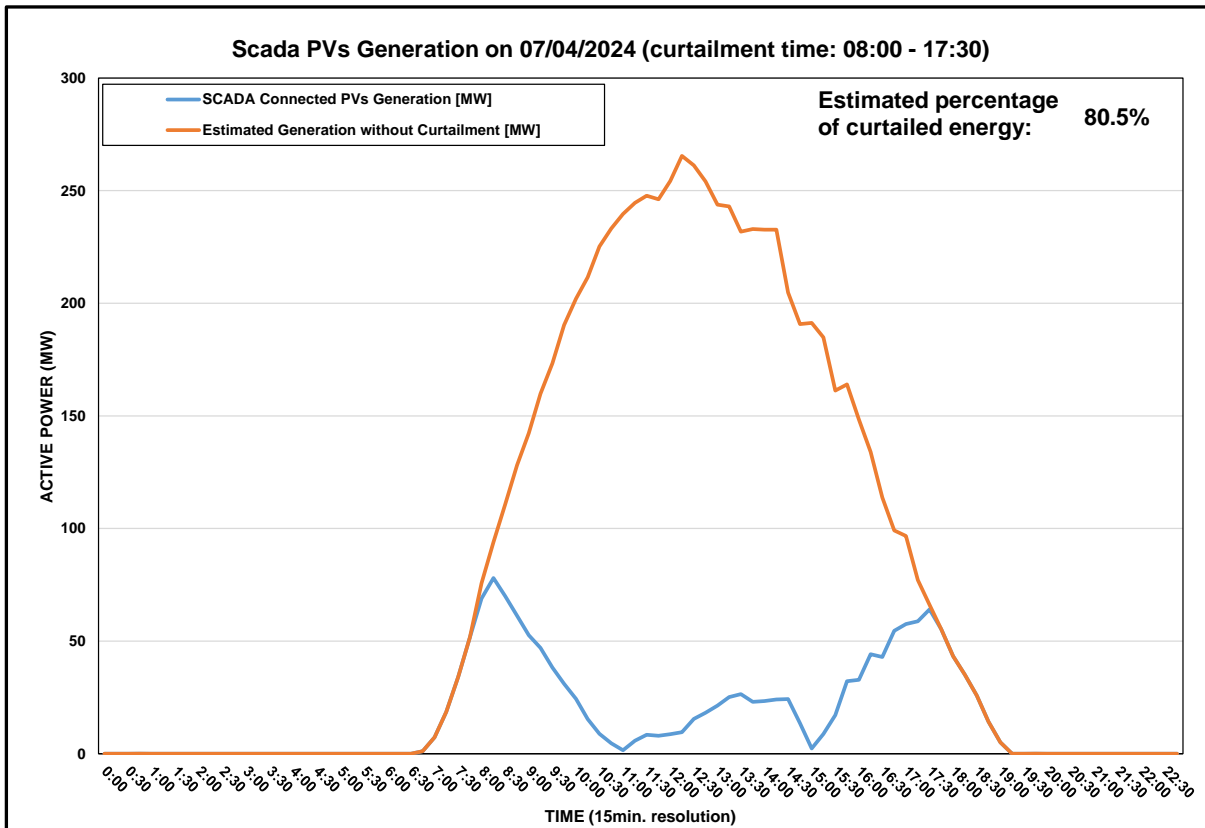


# DISTRIBUTION SYSTEM OPERATOR SYSTEM OPERATION



## Daily Curtailment Report of PV Generation

<b>Date of Curtailment</b>	07/04/2024	<b>Activation of PV System cut-off from 7.14kW &lt;= P &lt; 500kW:</b>	
		<b>Cut off PV System Group:</b>	NIC 2,PAF-1, NIC 1
<b>Start of Curtailment</b>	8:00	<b>Start of cut-off:</b>	10:30
<b>End of Curtailment</b>	17:30	<b>End of cut-off:</b>	14:15
<b>Instruction from TSOC</b>	YES		
<b>Reason of Curtailment</b>	RES-E Generation Restriction due to low loading of the electrical system		
<b>Total Estimated Energy of the day:</b>	1874.9 MWh	<b>Total Estimated cut-off energy regarding PV Systems from 7.14kW &lt;= P &lt; 500kW:</b>	109.3 MWh
<b>Total Estimated Curtailed Energy:</b>	1509 MWh		
<b>Percentage of Curtailed Energy</b>	80.5%		



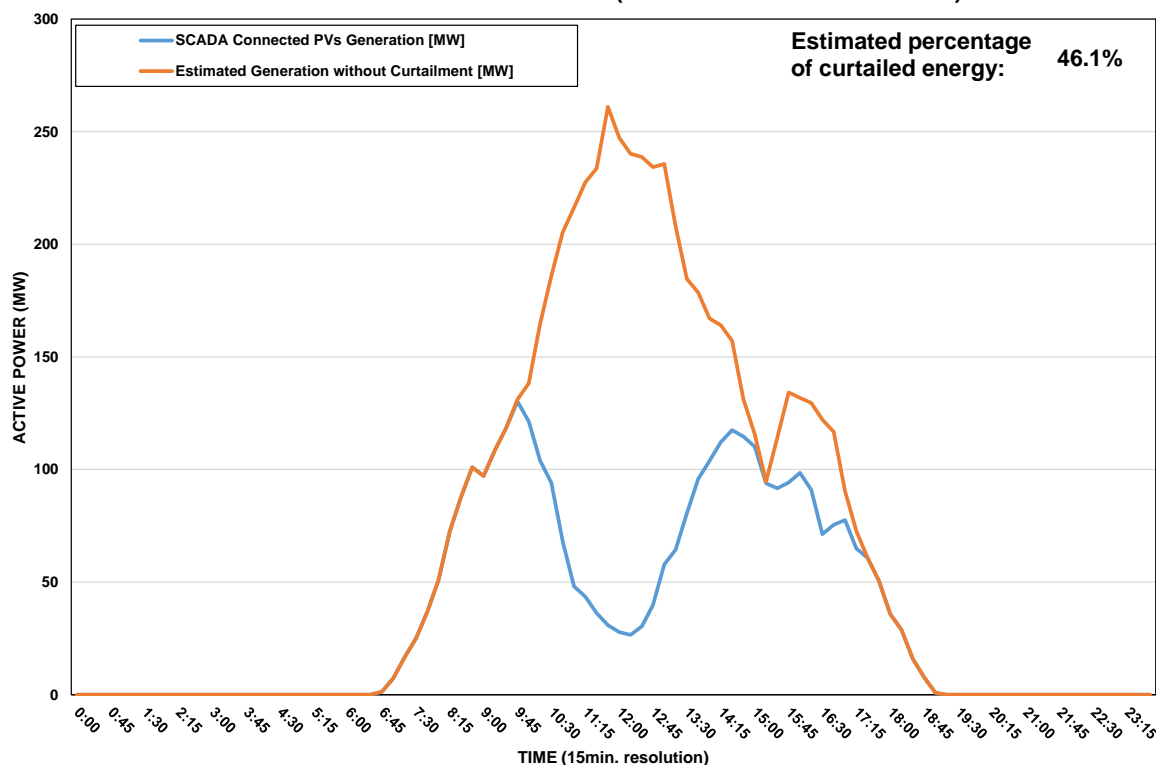
# DISTRIBUTION SYSTEM OPERATOR SYSTEM OPERATION



## Daily Curtailment Report of PV Generation

Date of Curtailment	08/04/2024
Start of Curtailment	9:45
End of Curtailment	17:30
Instruction from TSOC	YES
Reason of Curtailment	RES-E Generation Restriction due to low loading of the electrical system
Total Estimated Energy of the day:	1549 MWh
Total Estimated Curtailed Energy:	714.1 MWh
Percentage of Curtailed Energy	46.1%

**Scada PVs Generation on 08/04/2024 (curtailment time: 09:45 - 17:30)**



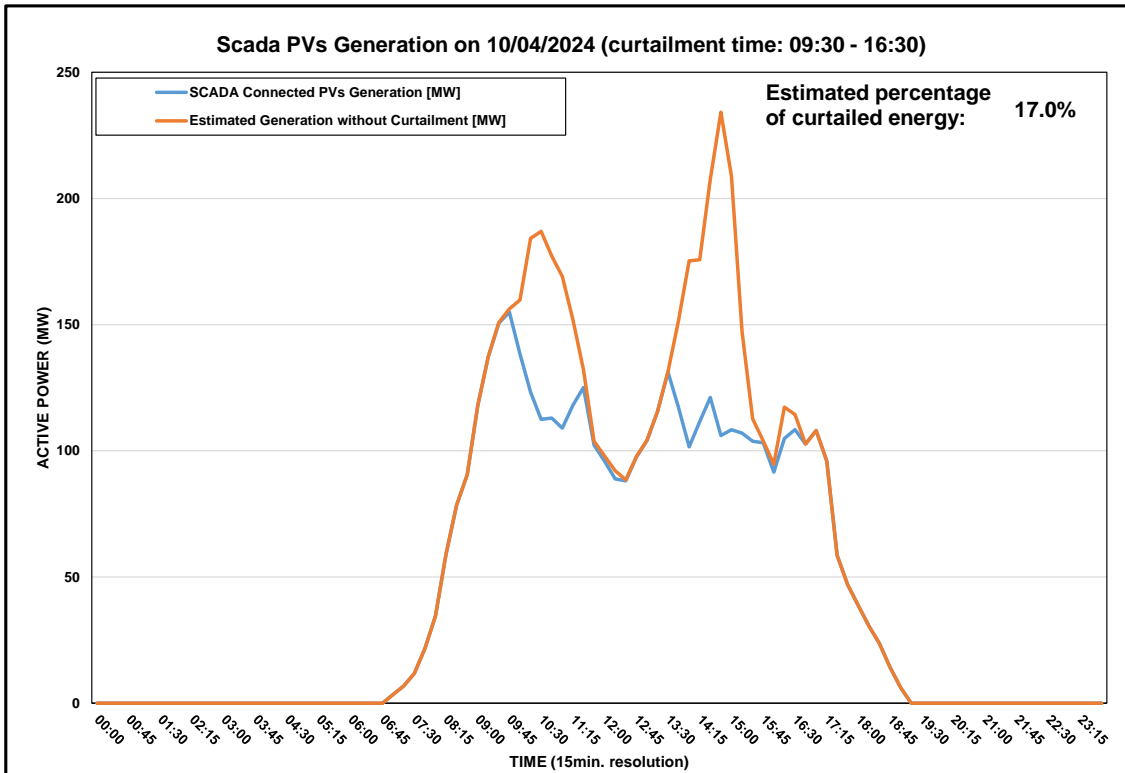


**DISTRIBUTION SYSTEM OPERATOR  
SYSTEM OPERATION**



**Daily Curtailment Report of PV Generation**

Date of Curtailment	10/04/2024
Start of Curtailment	09:30
End of Curtailment	16:30
Instruction from TSOC	YES
Reason of Curtailment	RES-E Generation Restriction due to low loading of the electrical system
Total Estimated Energy of the day:	1307.6 MWh
Total Estimated Curtailed Energy:	222.5 MWh
Percentage of Curtailed Energy	17.0%

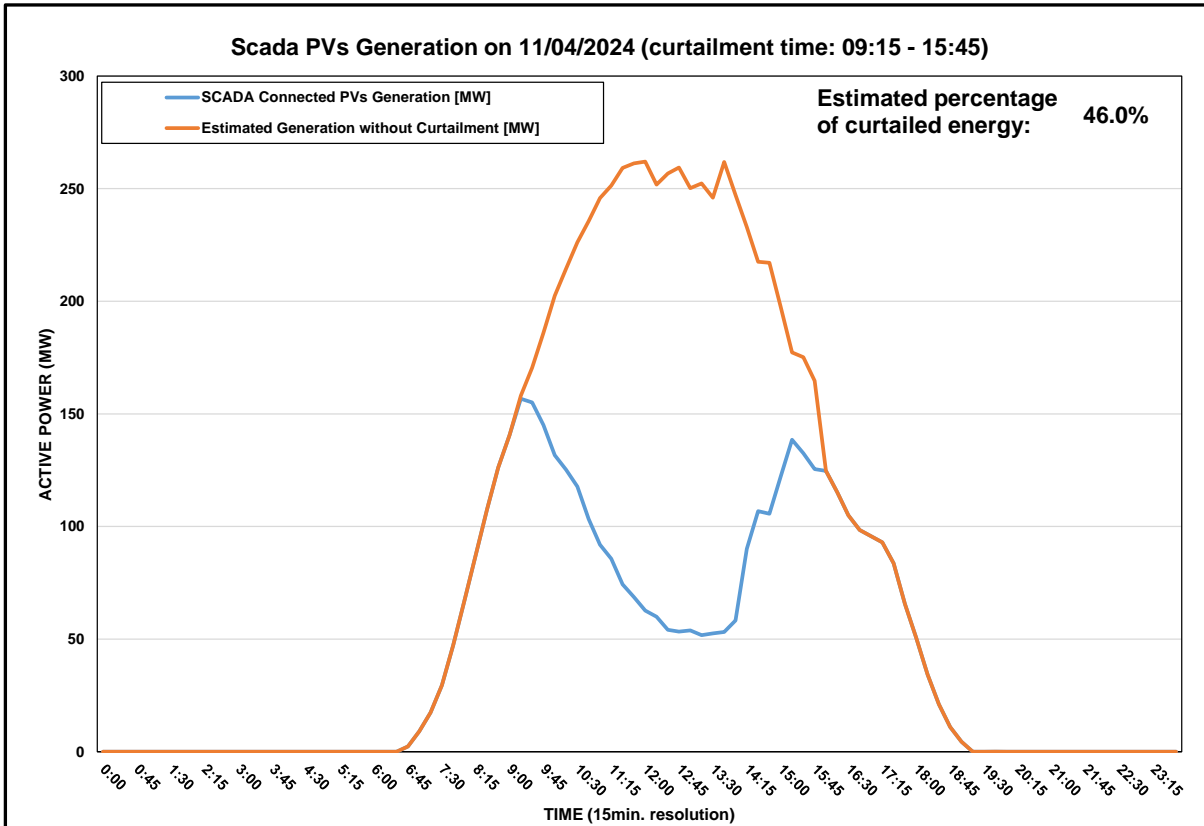


# DISTRIBUTION SYSTEM OPERATOR SYSTEM OPERATION



## Daily Curtailment Report of PV Generation

<b>Date of Curtailment</b>	11/04/2024
<b>Start of Curtailment</b>	9:15
<b>End of Curtailment</b>	15:45
<b>Instruction from TSOC</b>	YES
<b>Reason of Curtailment</b>	RES-E Generation Restriction due to low loading of the electrical system
<b>Total Estimated Energy of the day:</b>	1904.5 MWh
<b>Total Estimated Curtailed Energy:</b>	876.2 MWh
<b>Percentage of Curtailed Energy</b>	46.0%



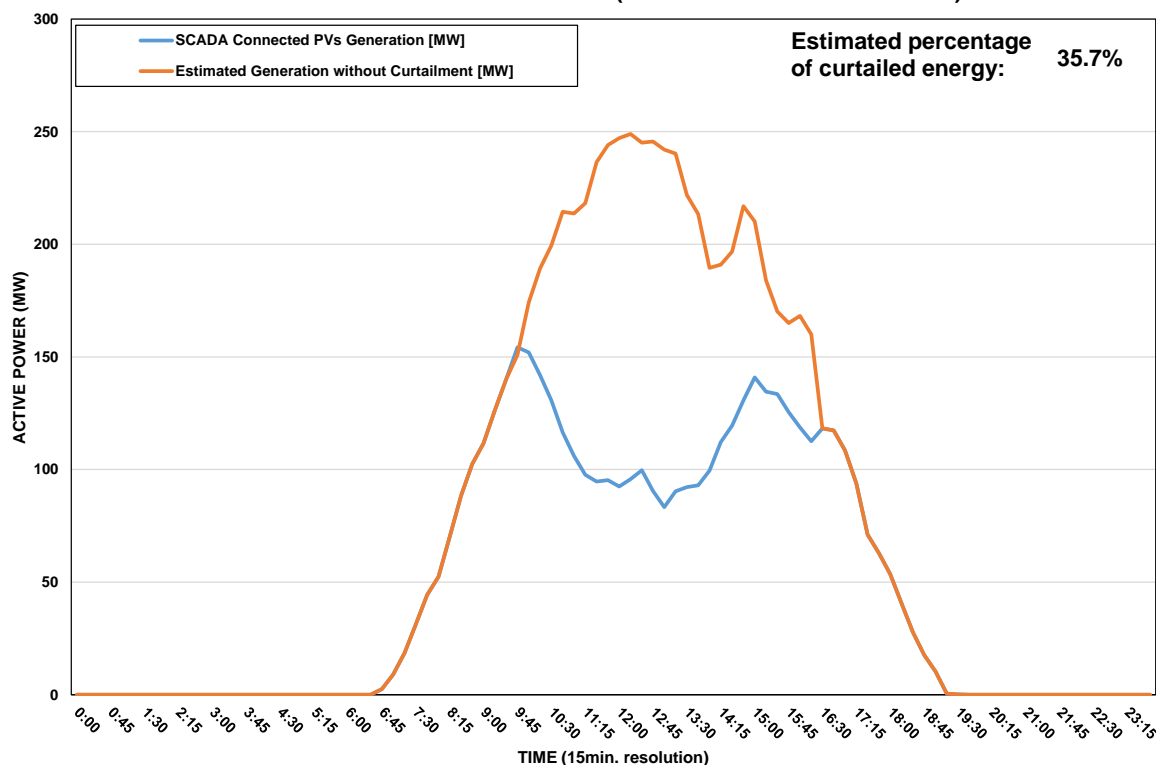
# DISTRIBUTION SYSTEM OPERATOR SYSTEM OPERATION



## Daily Curtailment Report of PV Generation

Date of Curtailment	12/04/2024
Start of Curtailment	9:45
End of Curtailment	16:15
Instruction from TSOC	YES
Reason of Curtailment	RES-E Generation Restriction due to low loading of the electrical system
Total Estimated Energy of the day:	1779 MWh
Total Estimated Curtailed Energy:	635.9 MWh
Percentage of Curtailed Energy	35.7%

**Scada PVs Generation on 12/04/2024 (curtailment time: 09:45 - 16:15)**

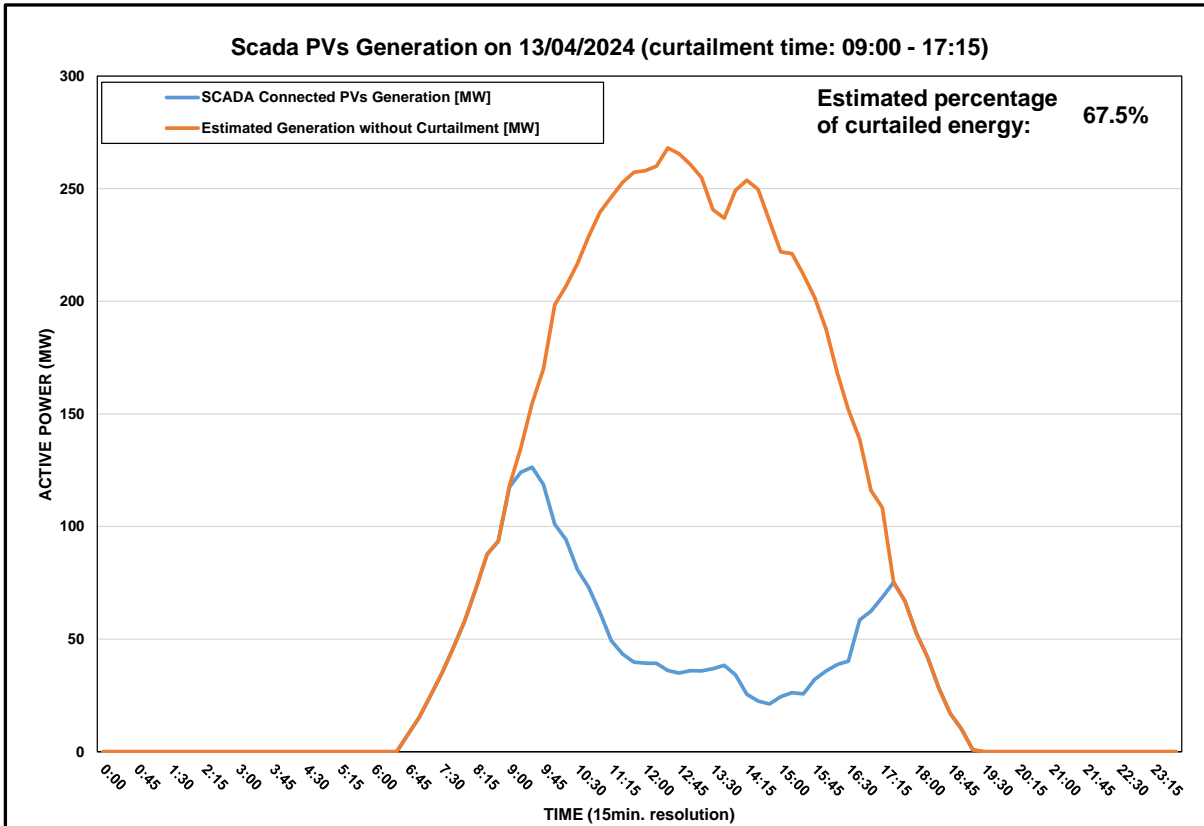


# DISTRIBUTION SYSTEM OPERATOR SYSTEM OPERATION



## Daily Curtailment Report of PV Generation

<b>Date of Curtailment</b>	13/04/2024
<b>Start of Curtailment</b>	9:00
<b>End of Curtailment</b>	17:15
<b>Instruction from TSOC</b>	YES
<b>Reason of Curtailment</b>	RES-E Generation Restriction due to low loading of the electrical system
<b>Total Estimated Energy of the day:</b>	1979.6 MWh
<b>Total Estimated Curtailed Energy:</b>	1335.7 MWh
<b>Percentage of Curtailed Energy</b>	67.5%



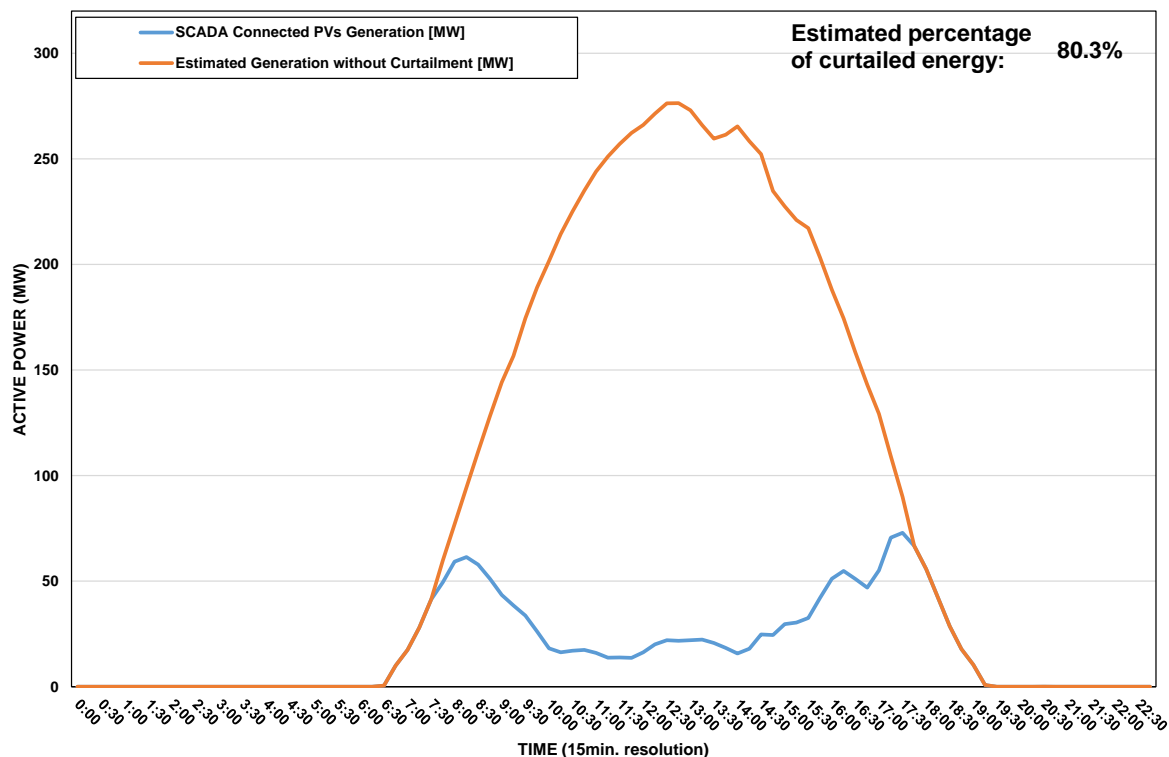
# DISTRIBUTION SYSTEM OPERATOR SYSTEM OPERATION



## Daily Curtailment Report of PV Generation

<b>Date of Curtailment</b>	14/04/2024	<b>Activation of PV System cut-off from 7.14kW <math>\leq</math> P &lt; 500kW:</b>	
		<b>Cut off PV System Group:</b> NIC 2,PAF-1,LAR 1,LIM 1,NIC 1	
<b>Start of Curtailment</b>	7:45	<b>Start of cut-off:</b>	9:45
<b>End of Curtailment</b>	17:30	<b>End of cut-off:</b>	16:45
<b>Instruction from TSOC</b>	YES		
<b>Reason of Curtailment</b>	RES-E Generation Restriction due to low loading of the electrical system		
<b>Total Estimated Energy of the day:</b>	2091.7 MWh	<b>Total Estimated cut-off energy regarding PV Systems from 7.14kW <math>\leq</math> P &lt; 500kW:</b>	306 MWh
<b>Total Estimated Curtailed Energy:</b>	1679.2 MWh		
<b>Percentage of Curtailed Energy</b>	80.3%		

**Scada PVs Generation on 14/04/2024 (curtailment time: 07:45 - 17:30)**



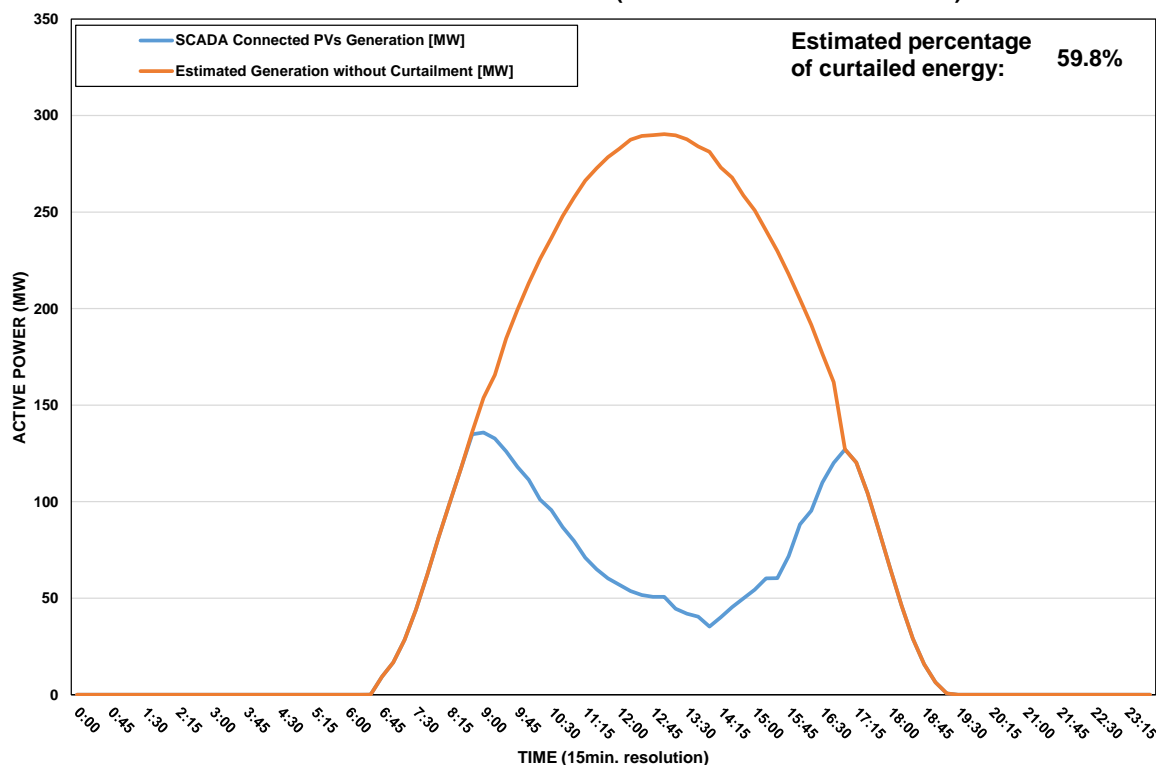
# DISTRIBUTION SYSTEM OPERATOR SYSTEM OPERATION



## Daily Curtailment Report of PV Generation

<b>Date of Curtailment</b>	15/04/2024
<b>Start of Curtailment</b>	8:45
<b>End of Curtailment</b>	16:45
<b>Instruction from TSOC</b>	YES
<b>Reason of Curtailment</b>	RES-E Generation Restriction due to low loading of the electrical system
<b>Total Estimated Energy of the day:</b>	2238.3 MWh
<b>Total Estimated Curtailed Energy:</b>	1338.6 MWh
<b>Percentage of Curtailed Energy</b>	59.8%

**Scada PVs Generation on 15/04/2024 (curtailment time: 08:45 - 16:45)**

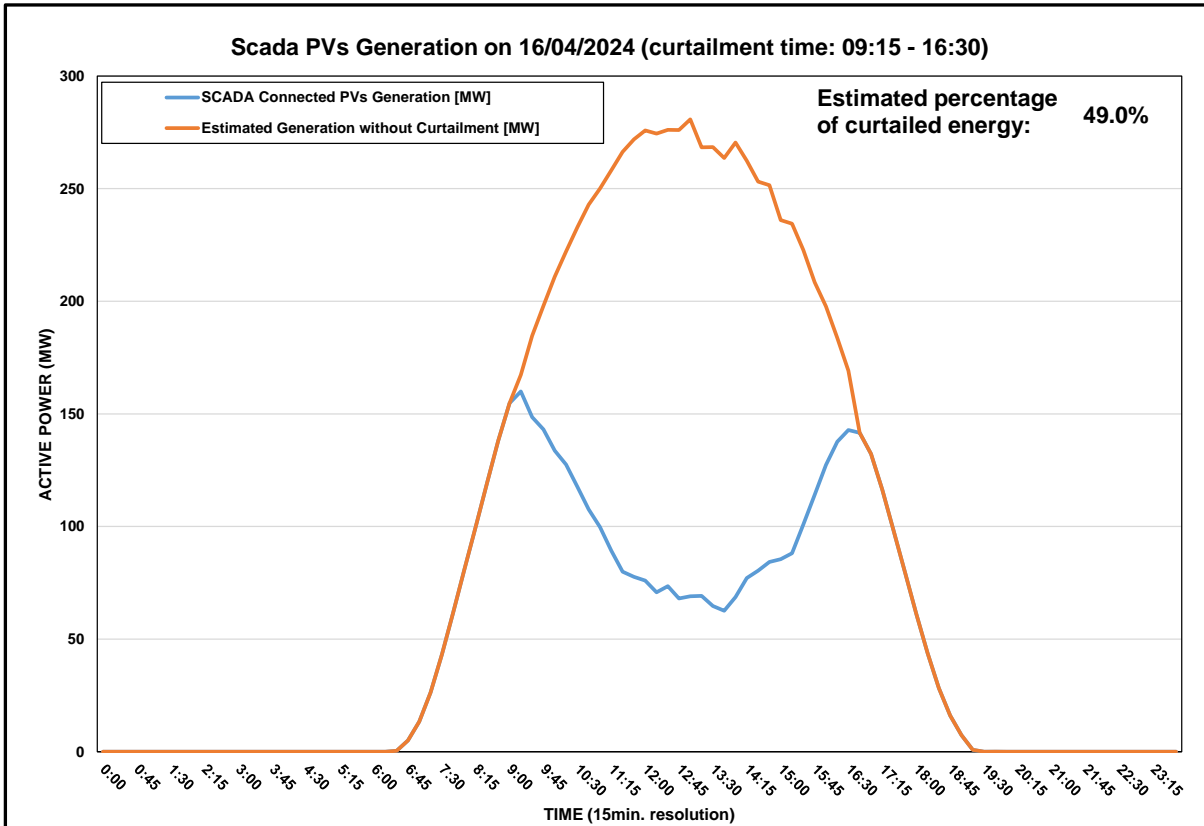


# DISTRIBUTION SYSTEM OPERATOR SYSTEM OPERATION



## Daily Curtailment Report of PV Generation

<b>Date of Curtailment</b>	16/04/2024
<b>Start of Curtailment</b>	9:15
<b>End of Curtailment</b>	16:30
<b>Instruction from TSOC</b>	YES
<b>Reason of Curtailment</b>	RES-E Generation Restriction due to low loading of the electrical system
<b>Total Estimated Energy of the day:</b>	2161.9 MWh
<b>Total Estimated Curtailed Energy:</b>	1058.3 MWh
<b>Percentage of Curtailed Energy</b>	49.0%



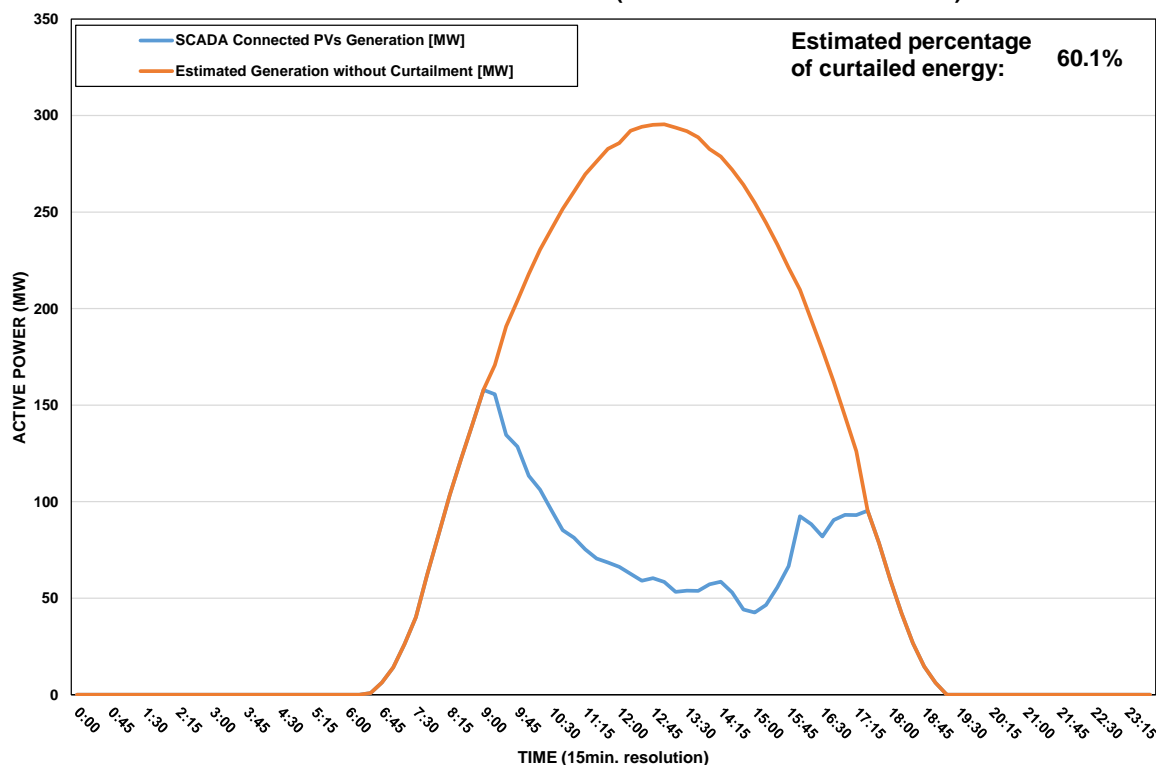
# DISTRIBUTION SYSTEM OPERATOR SYSTEM OPERATION



## Daily Curtailment Report of PV Generation

Date of Curtailment	17/04/2024
Start of Curtailment	9:00
End of Curtailment	17:15
Instruction from TSOC	YES
Reason of Curtailment	RES-E Generation Restriction due to low loading of the electrical system
Total Estimated Energy of the day:	2269.7 MWh
Total Estimated Curtailed Energy:	1363.4 MWh
Percentage of Curtailed Energy	60.1%

**Scada PVs Generation on 17/04/2024 (curtailment time: 09:00 - 17:15)**



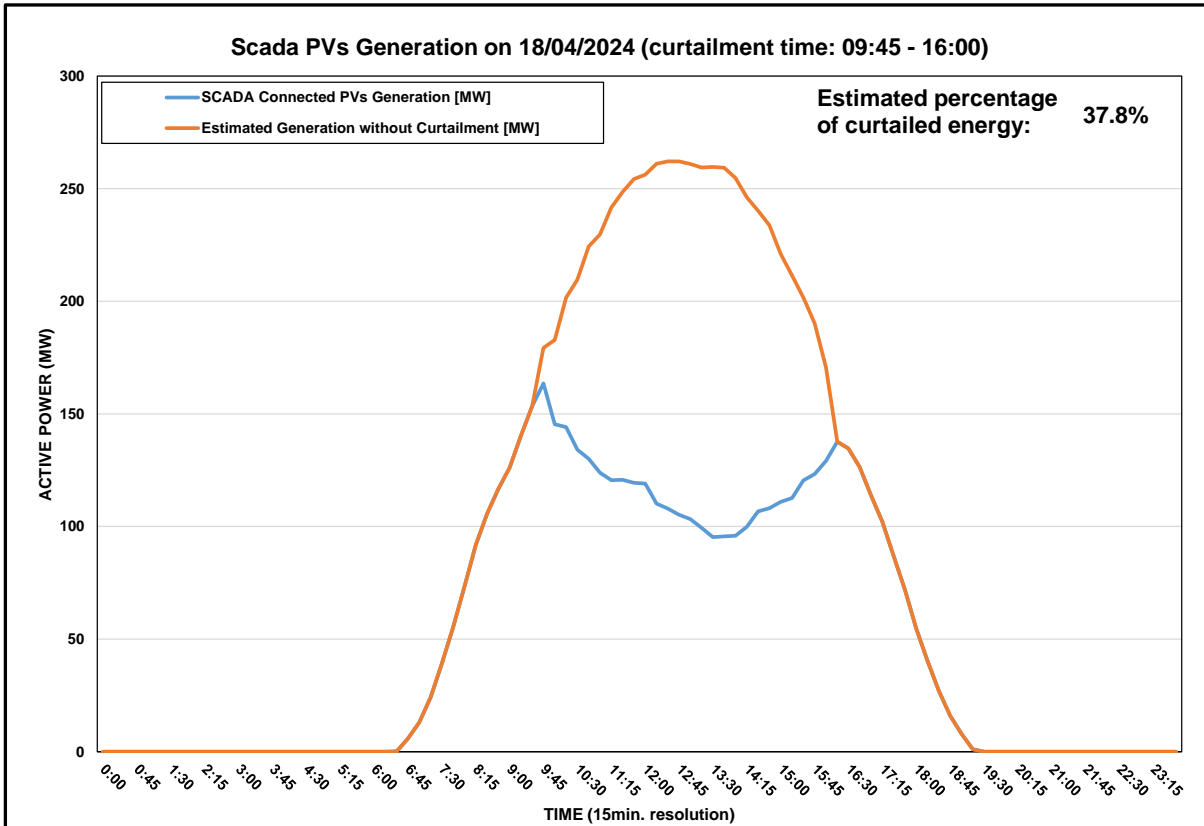


# DISTRIBUTION SYSTEM OPERATOR SYSTEM OPERATION



## Daily Curtailment Report of PV Generation

<b>Date of Curtailment</b>	18/04/2024
<b>Start of Curtailment</b>	9:45
<b>End of Curtailment</b>	16:00
<b>Instruction from TSOC</b>	YES
<b>Reason of Curtailment</b>	RES-E Generation Restriction due to low loading of the electrical system
<b>Total Estimated Energy of the day:</b>	1971.8 MWh
<b>Total Estimated Curtailed Energy:</b>	744.5 MWh
<b>Percentage of Curtailed Energy</b>	37.8%

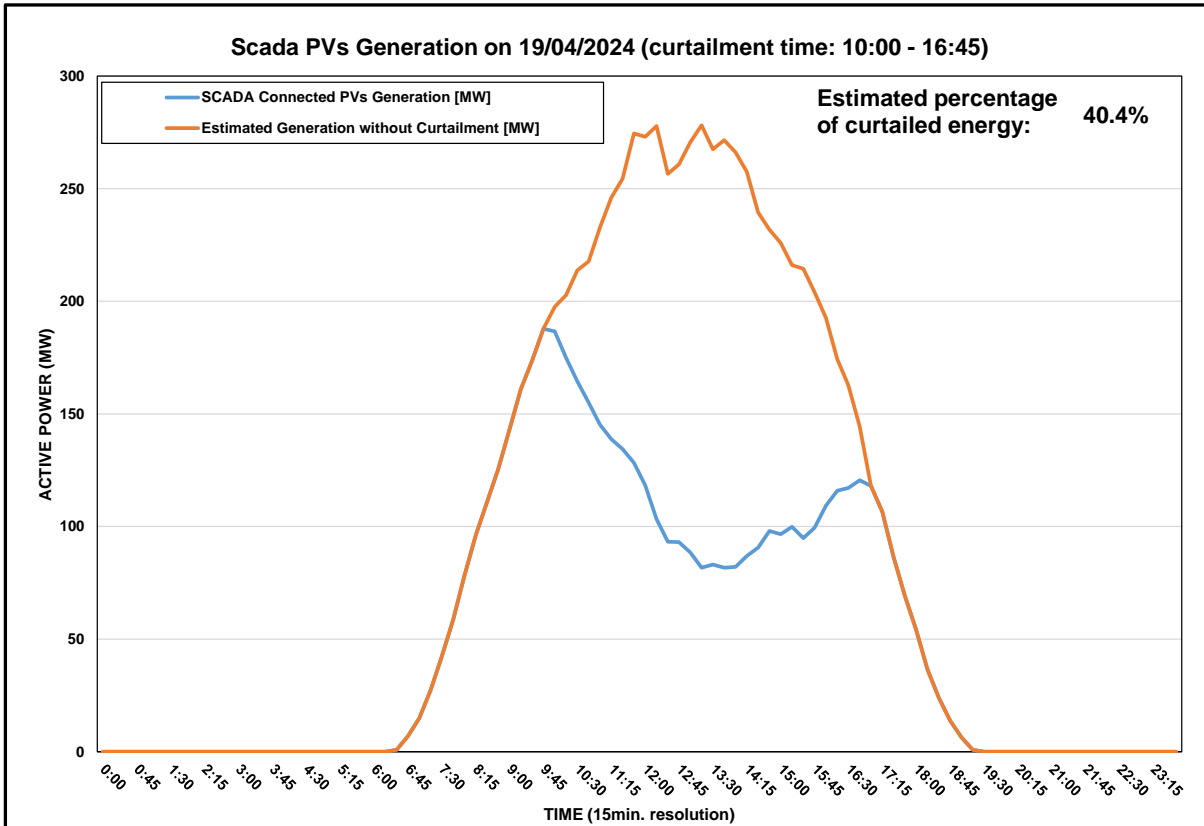


# DISTRIBUTION SYSTEM OPERATOR SYSTEM OPERATION



## Daily Curtailment Report of PV Generation

<b>Date of Curtailment</b>	19/04/2024
<b>Start of Curtailment</b>	10:00
<b>End of Curtailment</b>	16:45
<b>Instruction from TSOC</b>	YES
<b>Reason of Curtailment</b>	RES-E Generation Restriction due to low loading of the electrical system
<b>Total Estimated Energy of the day:</b>	2066.8 MWh
<b>Total Estimated Curtailed Energy:</b>	835.8 MWh
<b>Percentage of Curtailed Energy</b>	40.4%

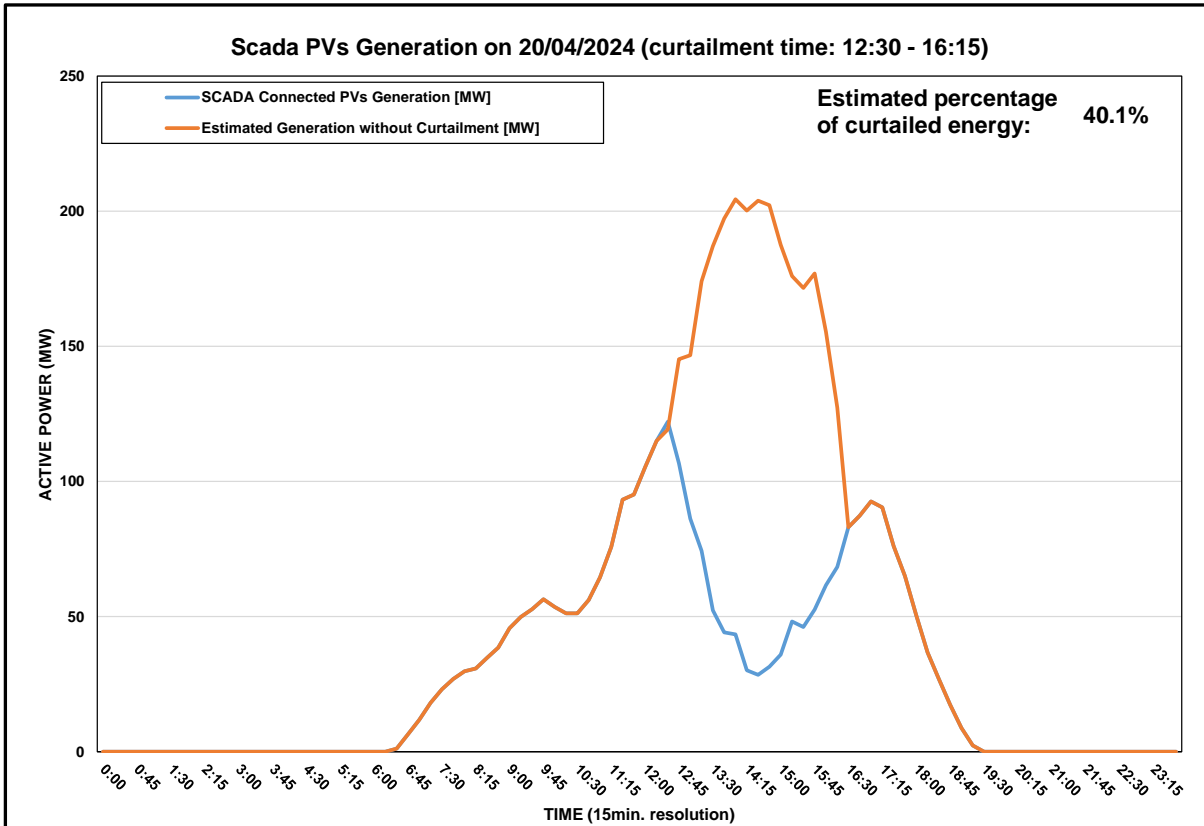


# DISTRIBUTION SYSTEM OPERATOR SYSTEM OPERATION



## Daily Curtailment Report of PV Generation

<b>Date of Curtailment</b>	20/04/2024
<b>Start of Curtailment</b>	12:30
<b>End of Curtailment</b>	16:15
<b>Instruction from TSOC</b>	YES
<b>Reason of Curtailment</b>	RES-E Generation Restriction due to low loading of the electrical system
<b>Total Estimated Energy of the day:</b>	1149.9 MWh
<b>Total Estimated Curtailed Energy:</b>	460.8 MWh
<b>Percentage of Curtailed Energy</b>	40.1%



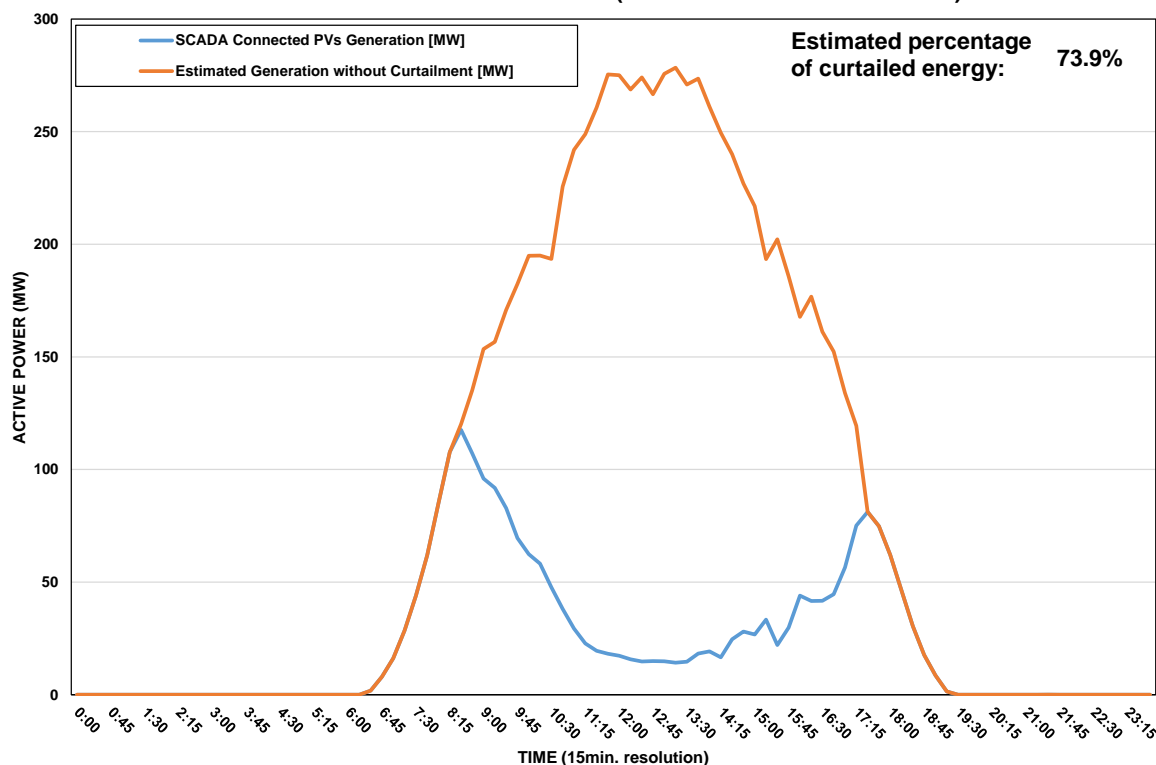
# DISTRIBUTION SYSTEM OPERATOR SYSTEM OPERATION



## Daily Curtailment Report of PV Generation

<b>Date of Curtailment</b>	21/04/2024
<b>Start of Curtailment</b>	8:30
<b>End of Curtailment</b>	17:15
<b>Instruction from TSOC</b>	YES
<b>Reason of Curtailment</b>	RES-E Generation Restriction due to low loading of the electrical system
<b>Total Estimated Energy of the day:</b>	2075.1 MWh
<b>Total Estimated Curtailed Energy:</b>	1533.8 MWh
<b>Percentage of Curtailed Energy</b>	73.9%

**Scada PVs Generation on 21/04/2024 (curtailment time: 08:30 - 17:15)**

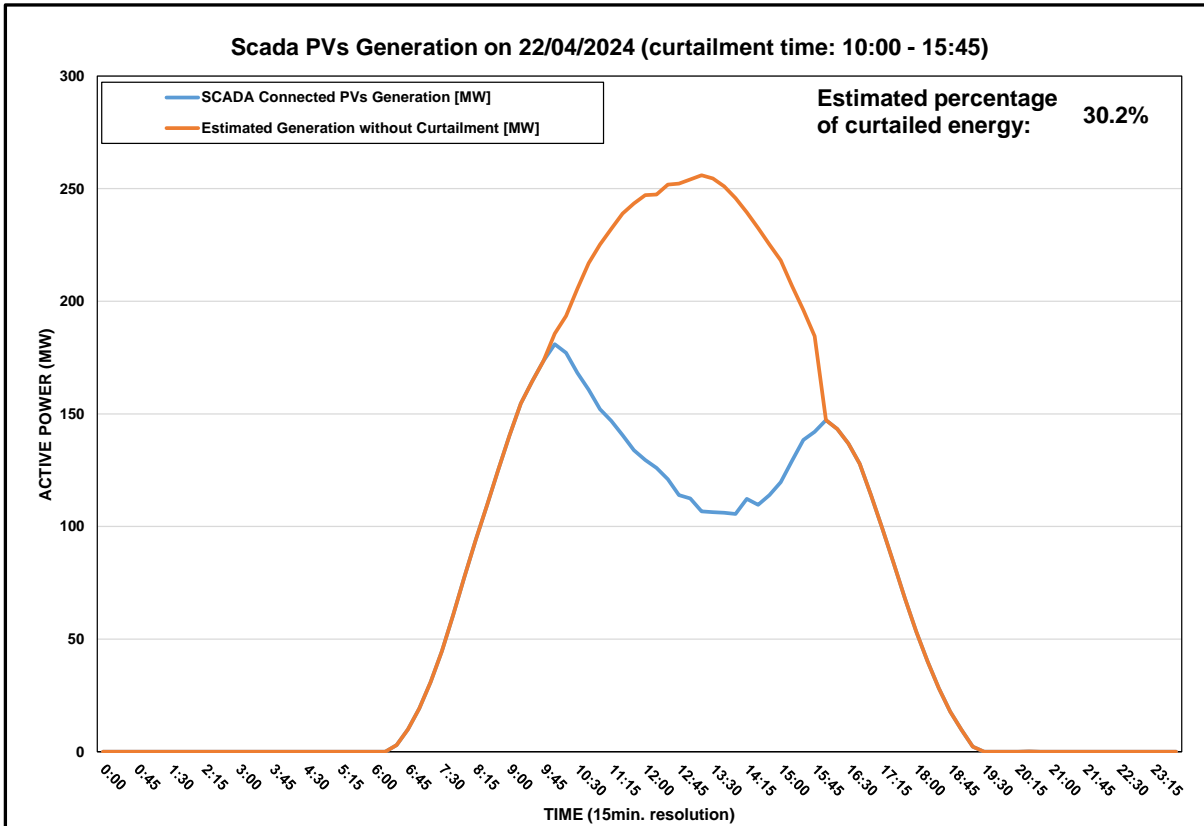


# DISTRIBUTION SYSTEM OPERATOR SYSTEM OPERATION



## Daily Curtailment Report of PV Generation

Date of Curtailment	22/04/2024
Start of Curtailment	10:00
End of Curtailment	15:45
Instruction from TSOC	YES
Reason of Curtailment	RES-E Generation Restriction due to low loading of the electrical system
Total Estimated Energy of the day:	1945.9 MWh
Total Estimated Curtailed Energy:	587.8 MWh
Percentage of Curtailed Energy	30.2%

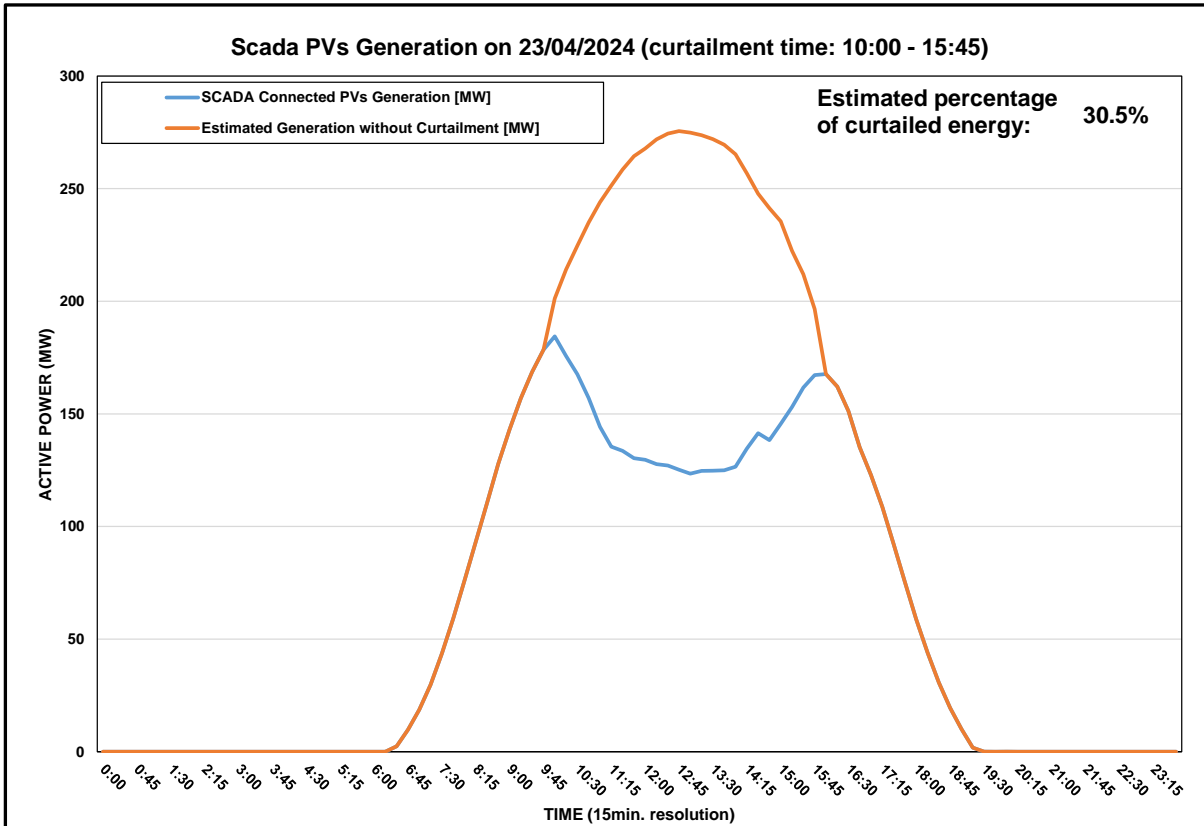


# DISTRIBUTION SYSTEM OPERATOR SYSTEM OPERATION



## Daily Curtailment Report of PV Generation

<b>Date of Curtailment</b>	23/04/2024
<b>Start of Curtailment</b>	10:00
<b>End of Curtailment</b>	15:45
<b>Instruction from TSOC</b>	YES
<b>Reason of Curtailment</b>	RES-E Generation Restriction due to low loading of the electrical system
<b>Total Estimated Energy of the day:</b>	2087.1 MWh
<b>Total Estimated Curtailed Energy:</b>	636.6 MWh
<b>Percentage of Curtailed Energy</b>	30.5%

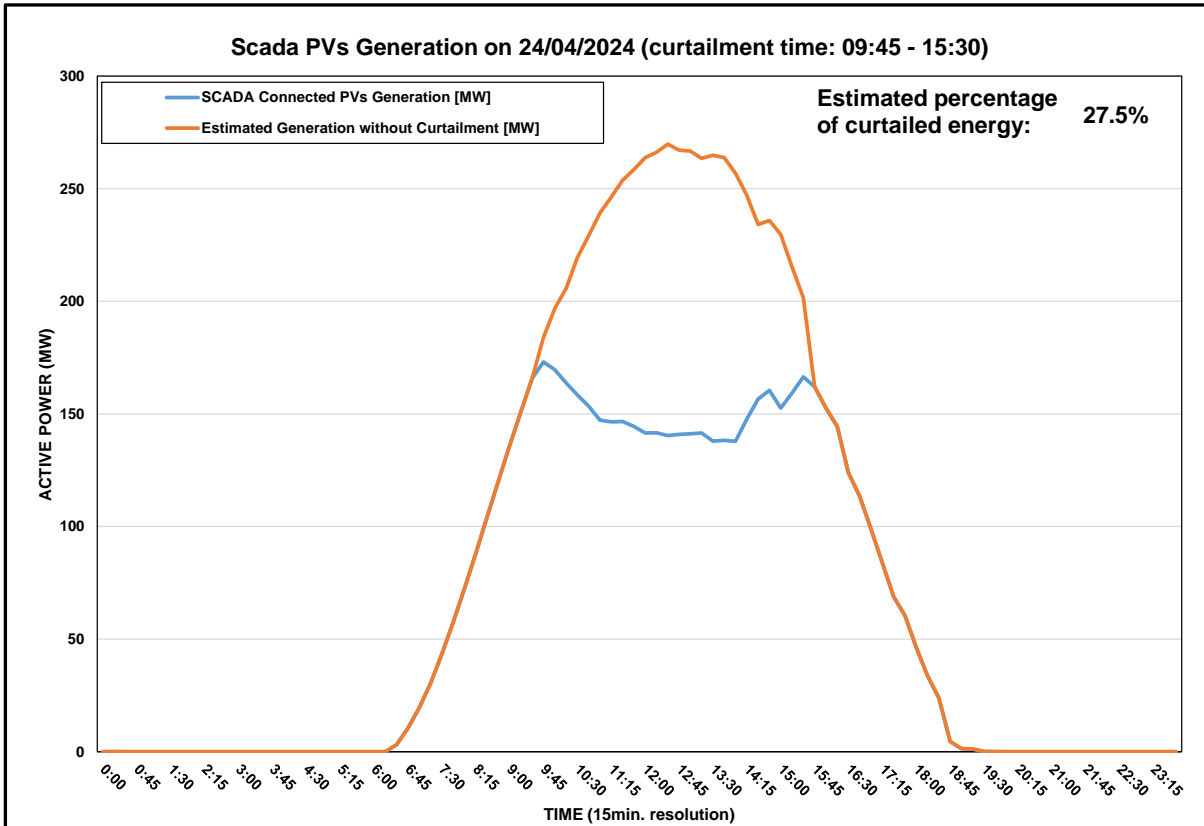


# DISTRIBUTION SYSTEM OPERATOR SYSTEM OPERATION



## Daily Curtailment Report of PV Generation

Date of Curtailment	24/04/2024
Start of Curtailment	9:45
End of Curtailment	15:30
Instruction from TSOC	YES
Reason of Curtailment	RES-E Generation Restriction due to low loading of the electrical system
Total Estimated Energy of the day:	1974.8 MWh
Total Estimated Curtailed Energy:	542.9 MWh
Percentage of Curtailed Energy	27.5%

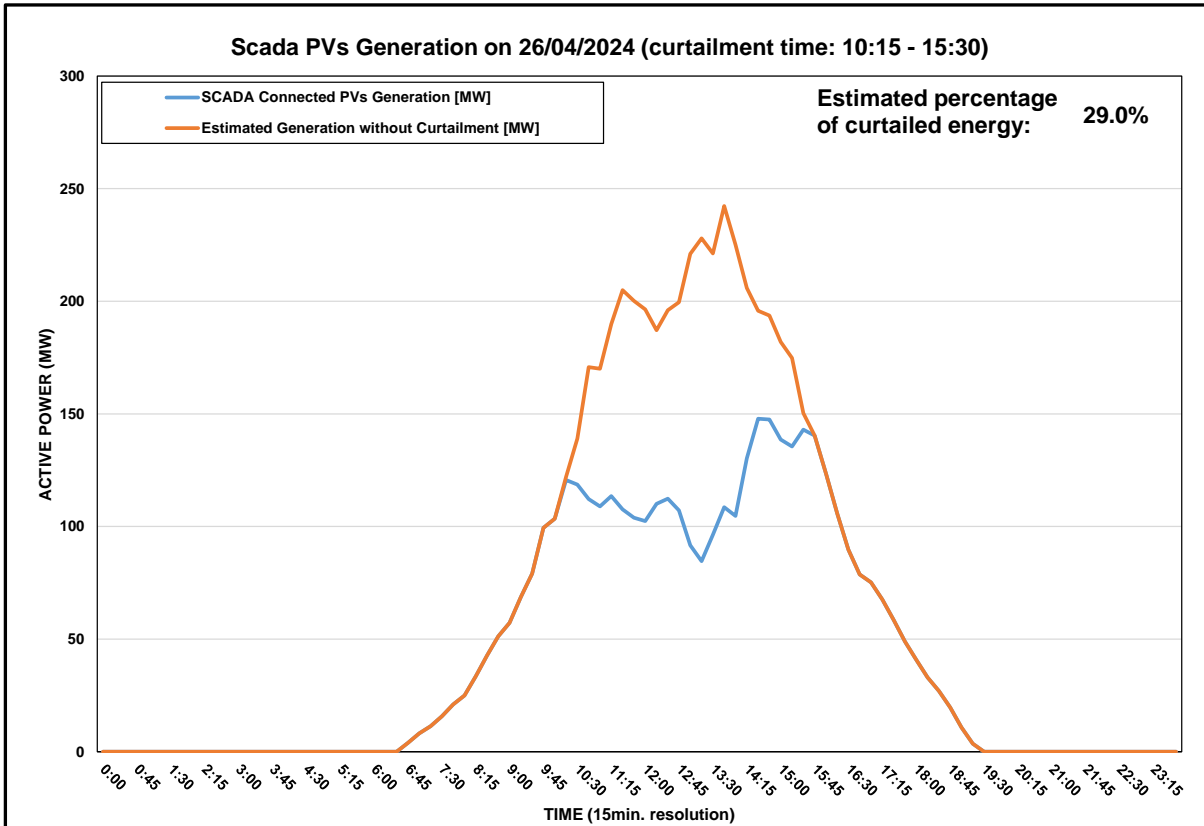


# DISTRIBUTION SYSTEM OPERATOR SYSTEM OPERATION



## Daily Curtailment Report of PV Generation

Date of Curtailment	26/04/2024
Start of Curtailment	10:15
End of Curtailment	15:30
Instruction from TSOC	YES
Reason of Curtailment	RES-E Generation Restriction due to low loading of the electrical system
Total Estimated Energy of the day:	1439.8 MWh
Total Estimated Curtailed Energy:	417.5 MWh
Percentage of Curtailed Energy	29.0%



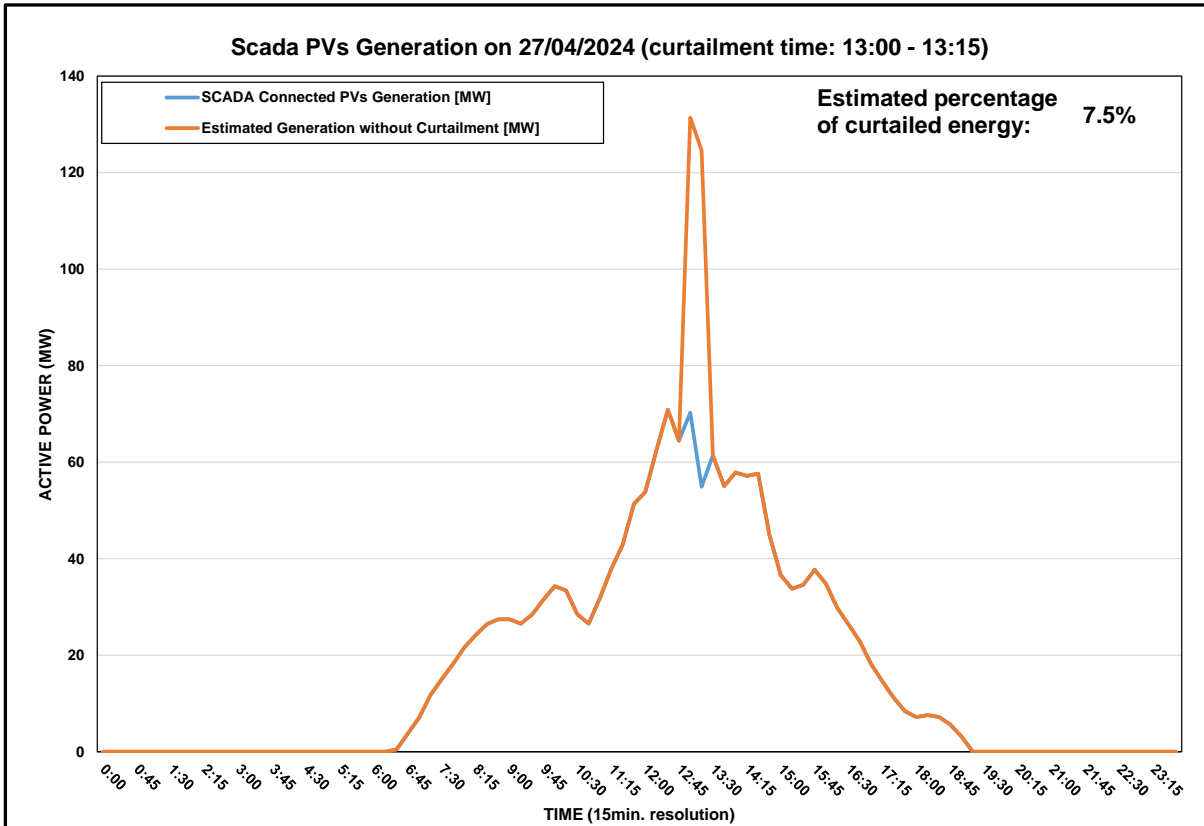


# DISTRIBUTION SYSTEM OPERATOR SYSTEM OPERATION



## Daily Curtailment Report of PV Generation

<b>Date of Curtailment</b>	27/04/2024
<b>Start of Curtailment</b>	13:00
<b>End of Curtailment</b>	13:15
<b>Instruction from TSOC</b>	YES
<b>Reason of Curtailment</b>	RES-E Generation Restriction due to low loading of the electrical system
<b>Total Estimated Energy of the day:</b>	434.5 MWh
<b>Total Estimated Curtailed Energy:</b>	32.7 MWh
<b>Percentage of Curtailed Energy</b>	7.5%

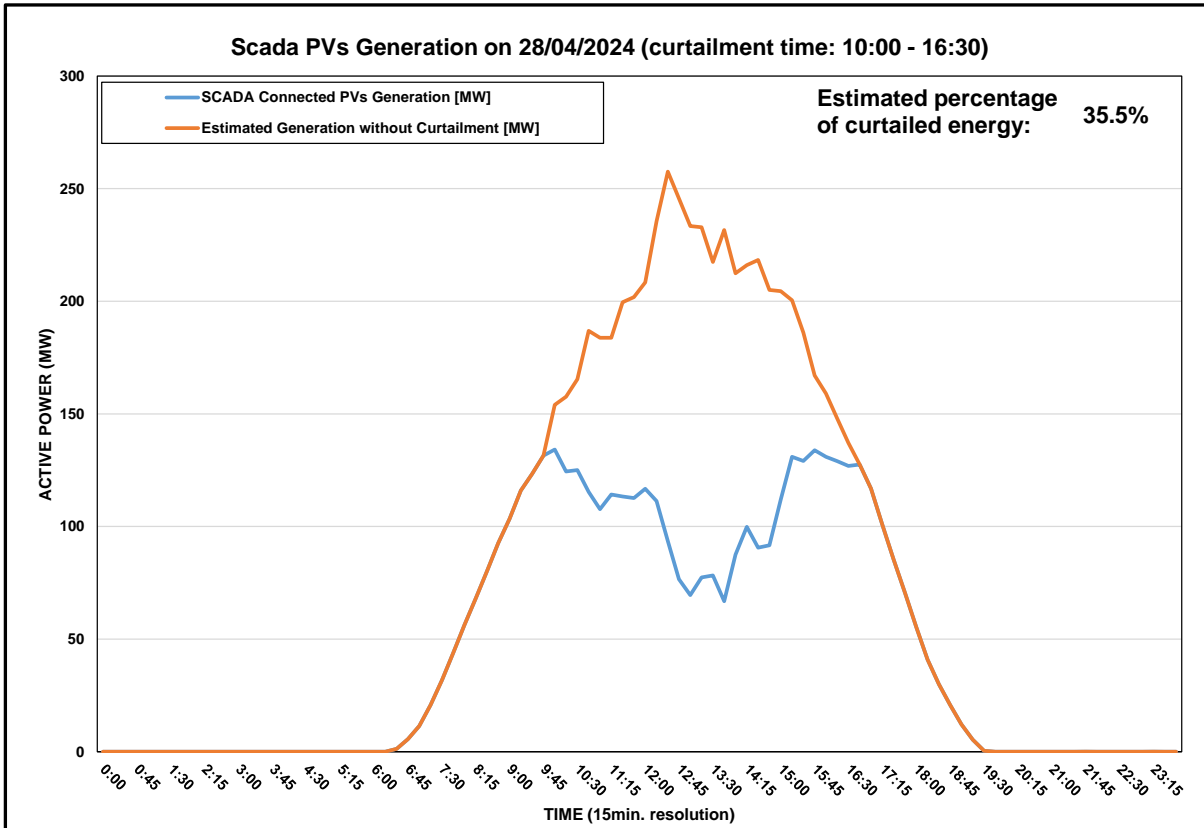


# DISTRIBUTION SYSTEM OPERATOR SYSTEM OPERATION



## Daily Curtailment Report of PV Generation

Date of Curtailment	28/04/2024
Start of Curtailment	10:00
End of Curtailment	16:30
Instruction from TSOC	YES
Reason of Curtailment	RES-E Generation Restriction due to low loading of the electrical system
Total Estimated Energy of the day:	1725.3 MWh
Total Estimated Curtailed Energy:	612.5 MWh
Percentage of Curtailed Energy	35.5%

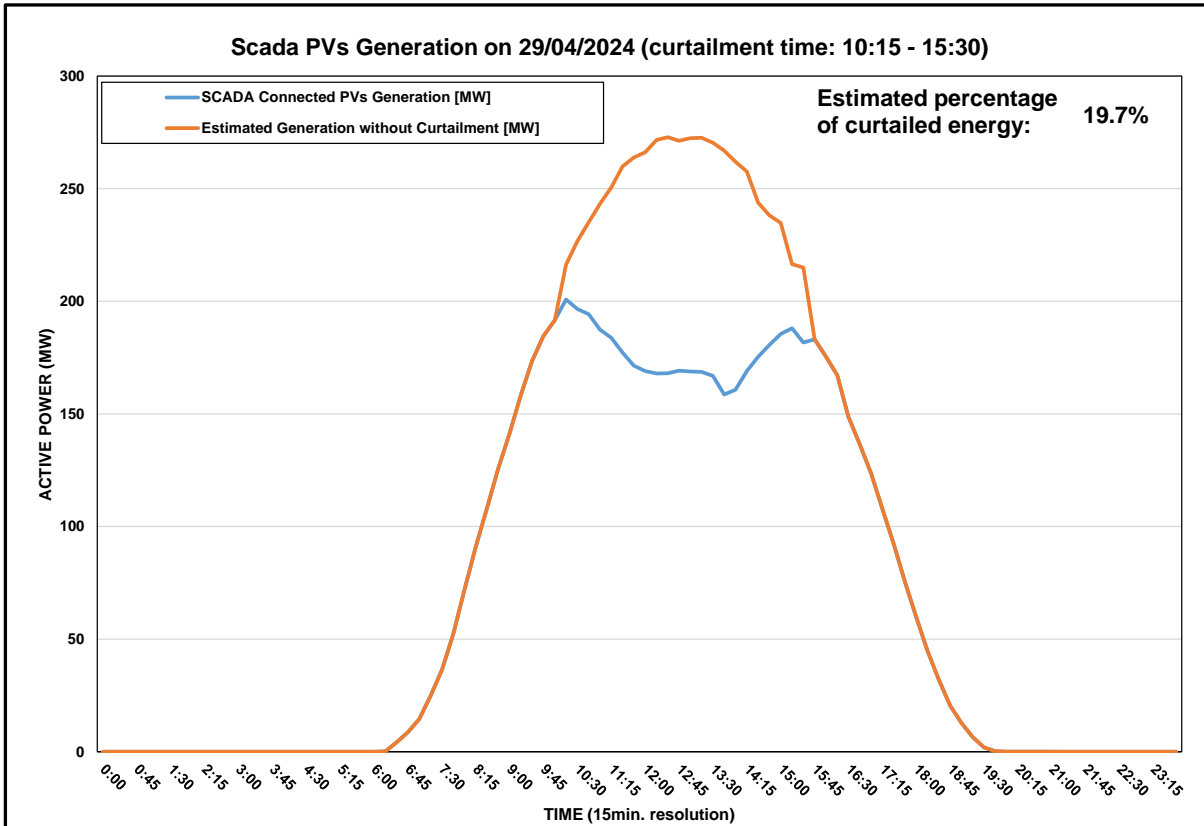


# DISTRIBUTION SYSTEM OPERATOR SYSTEM OPERATION



## Daily Curtailment Report of PV Generation

<b>Date of Curtailment</b>	29/04/2024
<b>Start of Curtailment</b>	10:15
<b>End of Curtailment</b>	15:30
<b>Instruction from TSOC</b>	YES
<b>Reason of Curtailment</b>	RES-E Generation Restriction due to low loading of the electrical system
<b>Total Estimated Energy of the day:</b>	2075.8 MWh
<b>Total Estimated Curtailed Energy:</b>	409.5 MWh
<b>Percentage of Curtailed Energy</b>	19.7%



**DISTRIBUTION SYSTEM OPERATOR  
SYSTEM OPERATION**



**Daily Curtailment Report of PV Generation**

Date of Curtailment	30/04/2024
Start of Curtailment	12:30
End of Curtailment	13:00
Instruction from TSOC	YES
Reason of Curtailment	RES-E Generation Restriction due to low loading of the electrical system
Total Estimated Energy of the day:	1109.3 MWh
Total Estimated Curtailed Energy:	5.2 MWh
Percentage of Curtailed Energy	0.5%

