

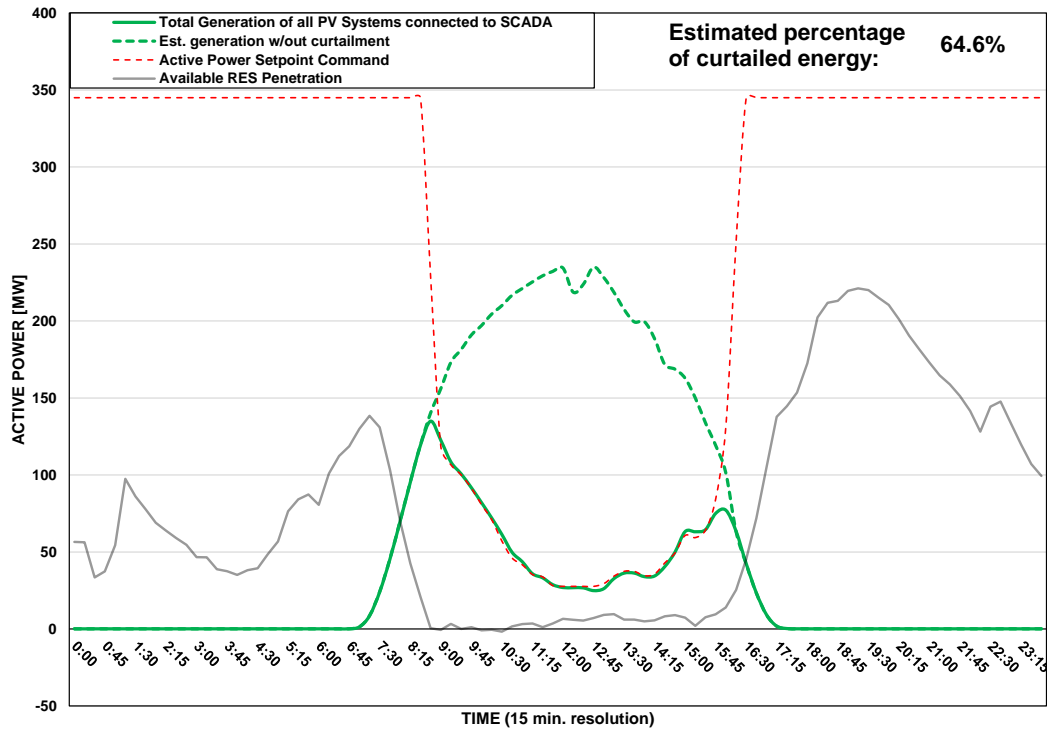
DISTRIBUTION SYSTEM OPERATOR SYSTEM OPERATION



PV Generation Curtailment Report

| | | |
|---|--|---|
| Date of Curtailment: | 01/02/2025 | Cut-off of PV Systems using RIPPLE and IoT: |
| Start of Curtailment | 8:45 | Cut-off areas using RIPPLE: NIC 2 Cut-off areas using IoT: PV-NIC1, PV-NIC4, PV-LCA/FAM1, PV-LCA/FAM2, PV-LCA/FAM3, PV-LIM3, PV-PAF3 |
| End of Curtailment | 16:00 | |
| Instruction from TSOC | YES | Start of cut-off: 09:00 End of cut-off: 16:15 |
| Reason of Curtailment: | RES-E Generation Restriction due to low loading of the electrical system | |
| Total Estimated Energy of the day: | 1562.3 MWh | Total Est. Energy of the cut-off PV systems using RIPPLE: 61.5MWh |
| Total Estimated Curtailed Energy: | 1009.2 MWh | Total Est. Energy of the cut-off PV systems using IoT: 197.4MWh |
| Percentage of Curtailed Energy: | 64.6% | |

Scada PVs Generation on 01/02/2025 (curtailment time: 08:45 - 16:00)



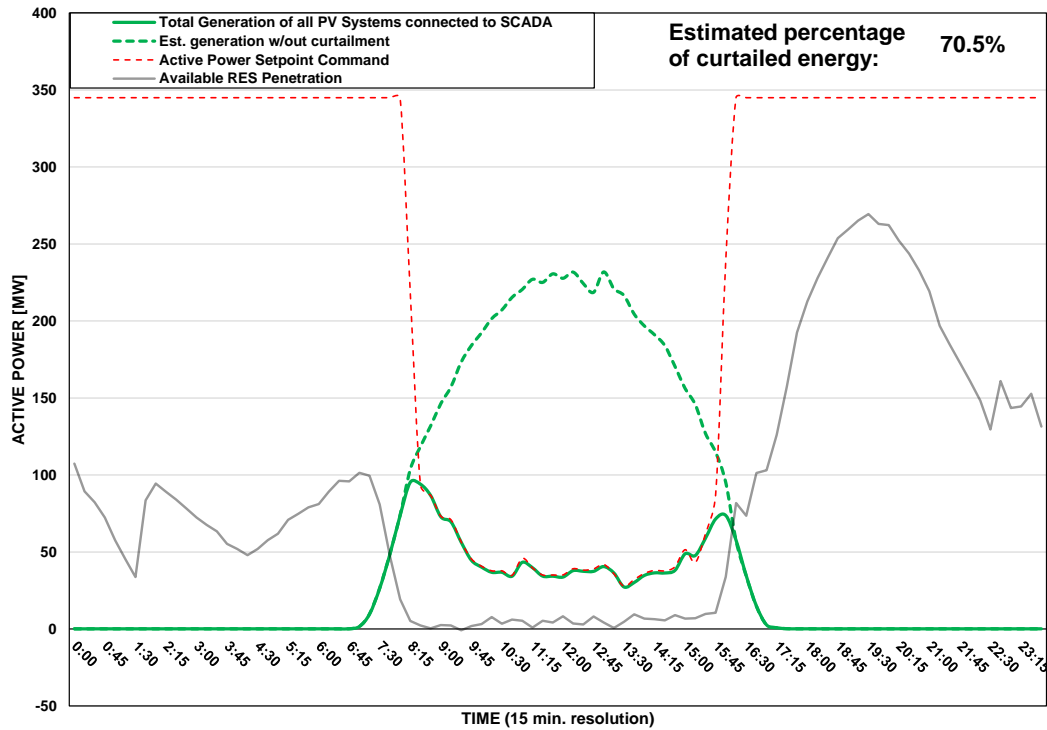
DISTRIBUTION SYSTEM OPERATOR SYSTEM OPERATION



PV Generation Curtailment Report

| | | |
|---|--|---|
| Date of Curtailment: | 02/02/2025 | Cut-off of PV Systems using RIPPLE and IoT: |
| Start of Curtailment | 8:15 | Cut-off areas using RIPPLE: NIC 2, NIC 3, LAR 2, LIM 2, PAF 2 Cut-off areas using IoT: PV-NIC1, PV-NIC4, PV-LCA/FAM1, PV-LCA/FAM2, PV-LCA/FAM3, PV-LIM3, PV-PAF3 |
| End of Curtailment | 16:00 | |
| Instruction from TSOC | YES | Start of cut-off: 08:15 End of cut-off: 16:00 |
| Reason of Curtailment: | RES-E Generation Restriction due to low loading of the electrical system | |
| Total Estimated Energy of the day: | 1541.6 MWh | Total Est. Energy of the cut-off PV systems using RIPPLE: 363.3MWh |
| Total Estimated Curtailed Energy: | 1086.3 MWh | Total Est. Energy of the cut-off PV systems using IoT: 217.7MWh |
| Percentage of Curtailed Energy: | 70.5% | |

Scada PVs Generation on 02/02/2025 (curtailment time: 08:15 - 16:00)



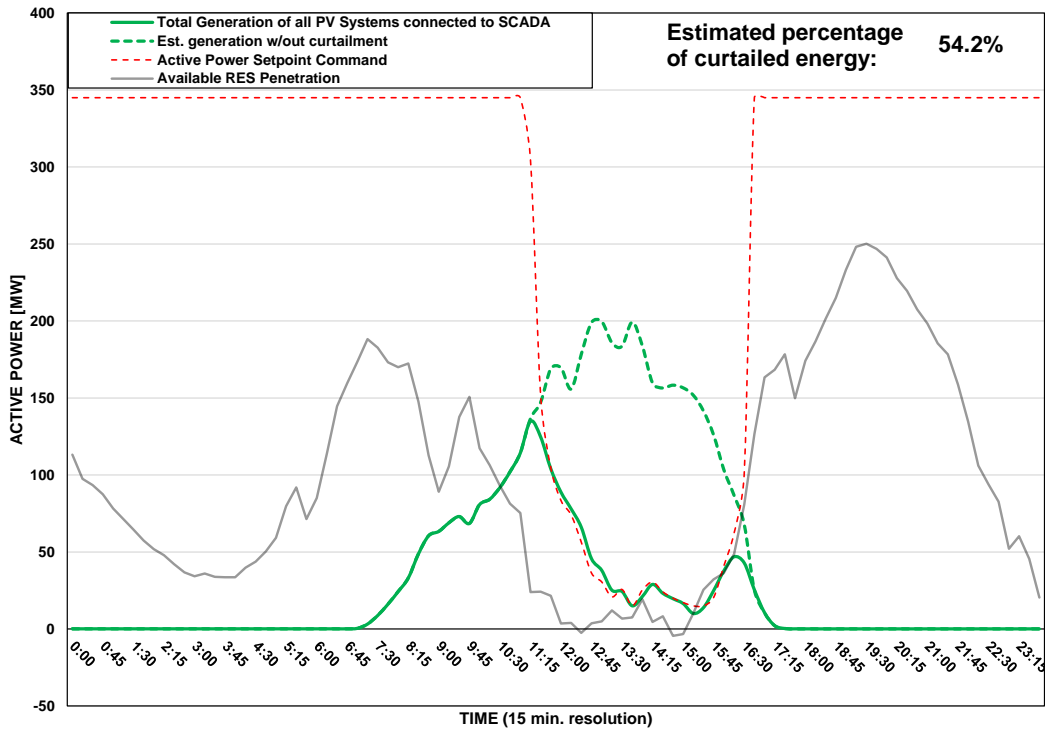
DISTRIBUTION SYSTEM OPERATOR SYSTEM OPERATION



PV Generation Curtailment Report

| | | |
|---|--|--|
| Date of Curtailment: | 03/02/2025 | Cut-off of PV Systems using RIPPLE: |
| Start of Curtailment | 11:15 | Cut-off areas using RIPPLE: NIC 1, NIC 2 |
| End of Curtailment | 16:30 | |
| Instruction from TSOC | YES | |
| Reason of Curtailment: | RES-E Generation Restriction due to low loading of the electrical system | |
| Total Estimated Energy of the day: | 1100.3 MWh | Total Est. Energy of the cut-off PV systems using RIPPLE: 32.5MWh |
| Total Estimated Curtailed Energy: | 596.5 MWh | |
| Percentage of Curtailed Energy: | 54.2% | |

Scada PVs Generation on 03/02/2025 (curtailment time: 11:15 - 16:30)

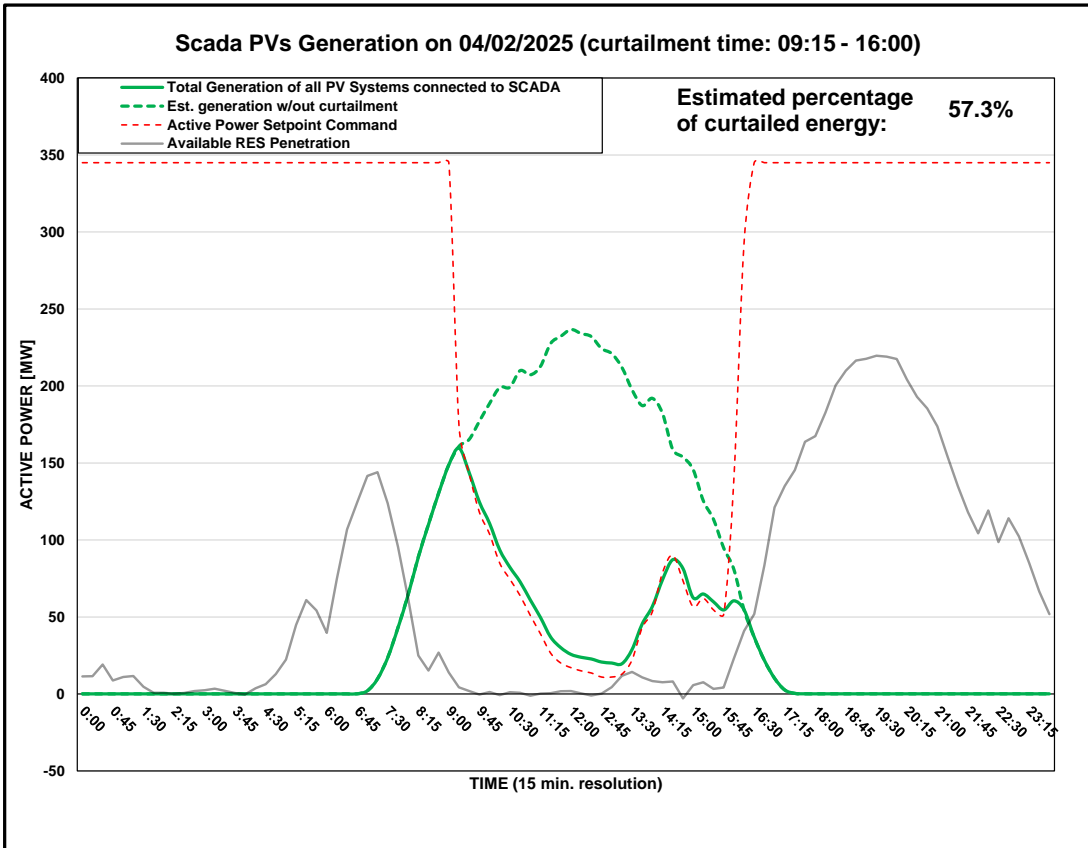


DISTRIBUTION SYSTEM OPERATOR SYSTEM OPERATION



PV Generation Curtailment Report

| | |
|------------------------------------|--|
| Date of Curtailment: | 04/02/2025 |
| Start of Curtailment | 9:15 |
| End of Curtailment | 16:00 |
| Instruction from TSOC | YES |
| Reason of Curtailment: | RES-E Generation Restriction due to low loading of the electrical system |
| Total Estimated Energy of the day: | 1480.9 MWh |
| Total Estimated Curtailed Energy: | 849.3 MWh |
| Percentage of Curtailed Energy: | 57.3% |

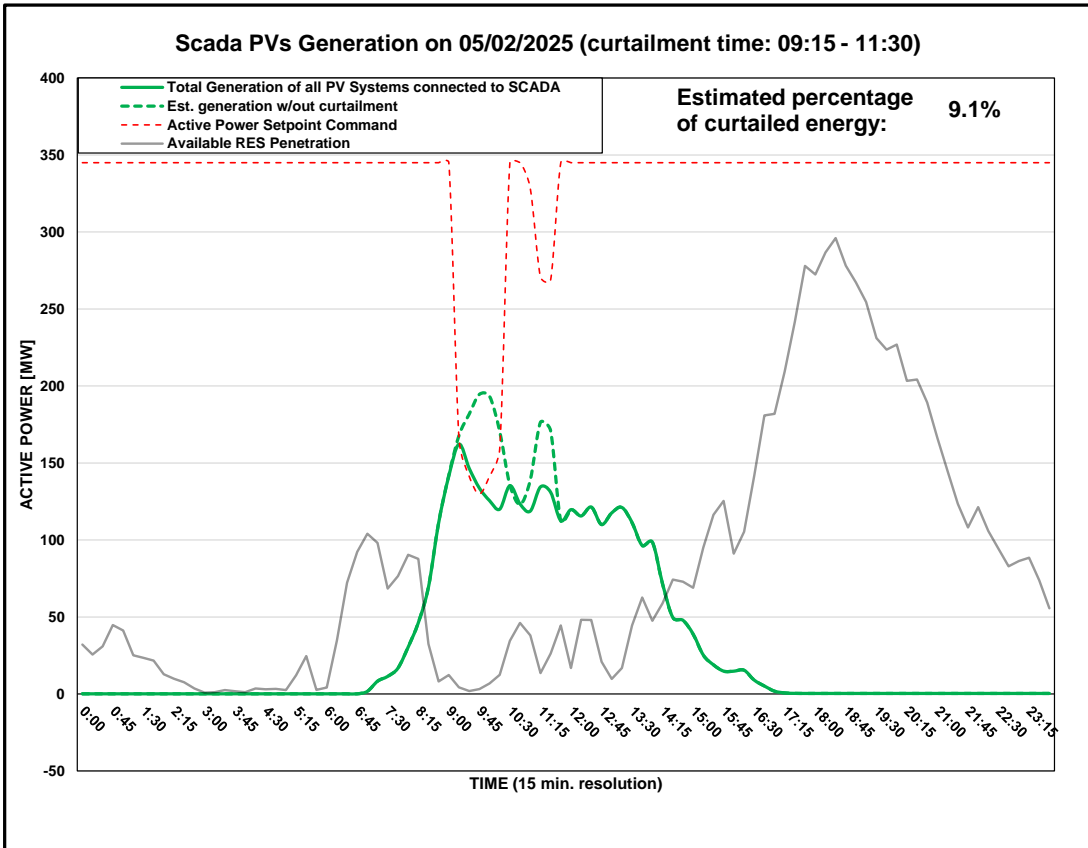


DISTRIBUTION SYSTEM OPERATOR SYSTEM OPERATION



PV Generation Curtailment Report

| | |
|------------------------------------|--|
| Date of Curtailment: | 05/02/2025 |
| Start of Curtailment | 9:15 |
| End of Curtailment | 11:30 |
| Instruction from TSOC | YES |
| Reason of Curtailment: | RES-E Generation Restriction due to low loading of the electrical system |
| Total Estimated Energy of the day: | 884.8 MWh |
| Total Estimated Curtailed Energy: | 80.5 MWh |
| Percentage of Curtailed Energy: | 9.1% |

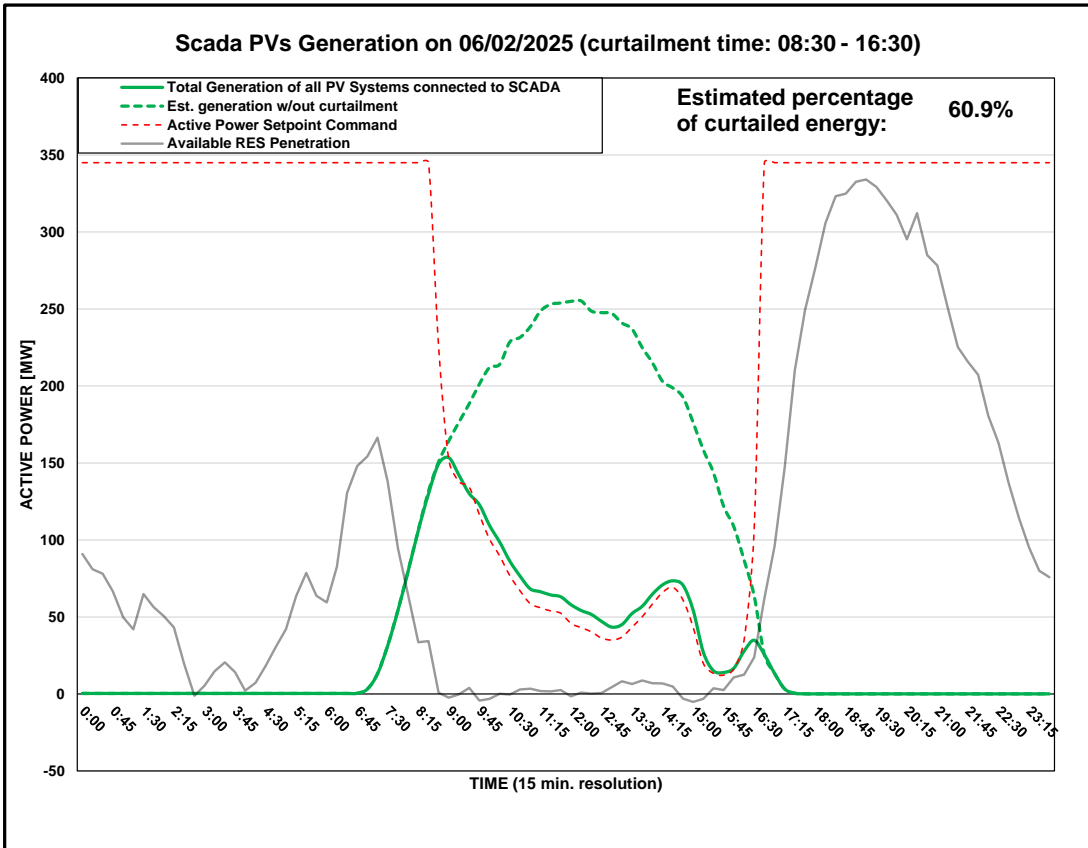


DISTRIBUTION SYSTEM OPERATOR SYSTEM OPERATION



PV Generation Curtailment Report

| | |
|------------------------------------|--|
| Date of Curtailment: | 06/02/2025 |
| Start of Curtailment | 8:30 |
| End of Curtailment | 16:30 |
| Instruction from TSOC | YES |
| Reason of Curtailment: | RES-E Generation Restriction due to low loading of the electrical system |
| Total Estimated Energy of the day: | 1715.2 MWh |
| Total Estimated Curtailed Energy: | 1044.9 MWh |
| Percentage of Curtailed Energy: | 60.9% |

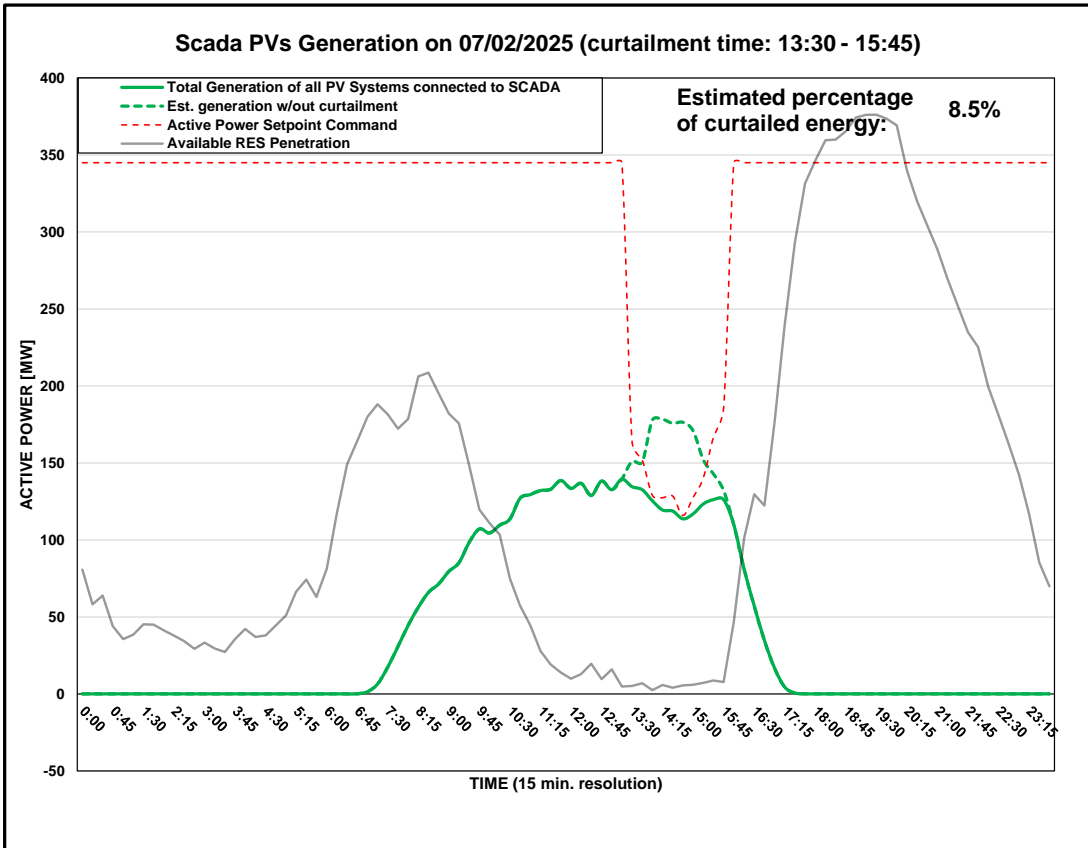


DISTRIBUTION SYSTEM OPERATOR SYSTEM OPERATION



PV Generation Curtailment Report

| | |
|------------------------------------|--|
| Date of Curtailment: | 07/02/2025 |
| Start of Curtailment | 13:30 |
| End of Curtailment | 15:45 |
| Instruction from TSOC | YES |
| Reason of Curtailment: | RES-E Generation Restriction due to low loading of the electrical system |
| Total Estimated Energy of the day: | 1094.5 MWh |
| Total Estimated Curtailed Energy: | 92.7 MWh |
| Percentage of Curtailed Energy: | 8.5% |

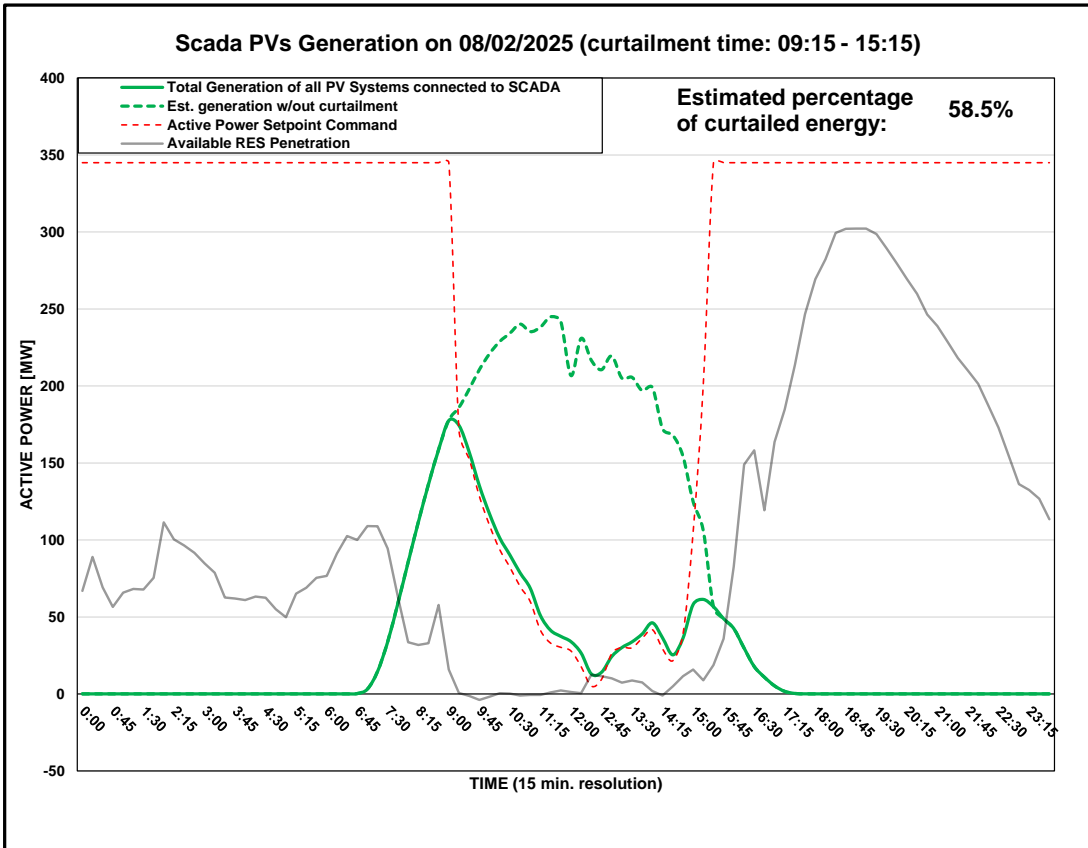


DISTRIBUTION SYSTEM OPERATOR SYSTEM OPERATION



PV Generation Curtailment Report

| | |
|------------------------------------|--|
| Date of Curtailment: | 08/02/2025 |
| Start of Curtailment | 9:15 |
| End of Curtailment | 15:15 |
| Instruction from TSOC | YES |
| Reason of Curtailment: | RES-E Generation Restriction due to low loading of the electrical system |
| Total Estimated Energy of the day: | 1523.3 MWh |
| Total Estimated Curtailed Energy: | 891.3 MWh |
| Percentage of Curtailed Energy: | 58.5% |

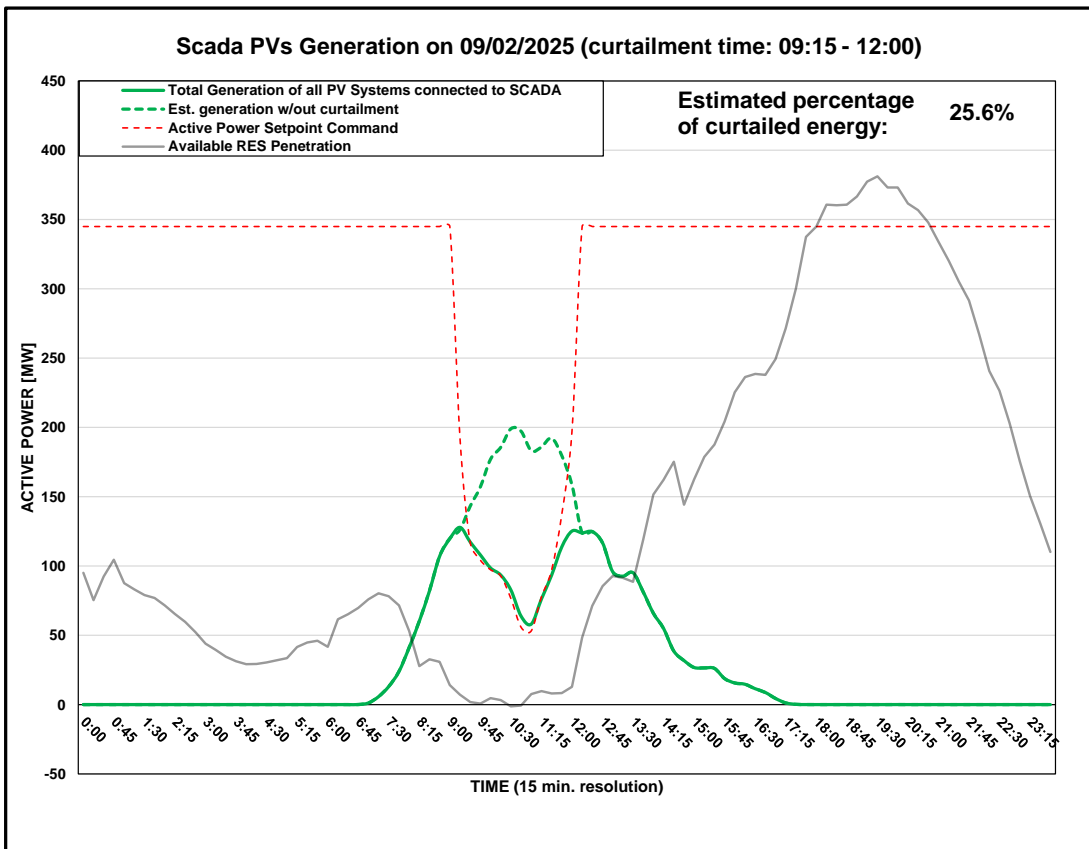


DISTRIBUTION SYSTEM OPERATOR SYSTEM OPERATION



PV Generation Curtailment Report

| | |
|------------------------------------|--|
| Date of Curtailment: | 09/02/2025 |
| Start of Curtailment | 9:15 |
| End of Curtailment | 12:00 |
| Instruction from TSOC | YES |
| Reason of Curtailment: | RES-E Generation Restriction due to low loading of the electrical system |
| Total Estimated Energy of the day: | 904.9 MWh |
| Total Estimated Curtailed Energy: | 231.6 MWh |
| Percentage of Curtailed Energy: | 25.6% |

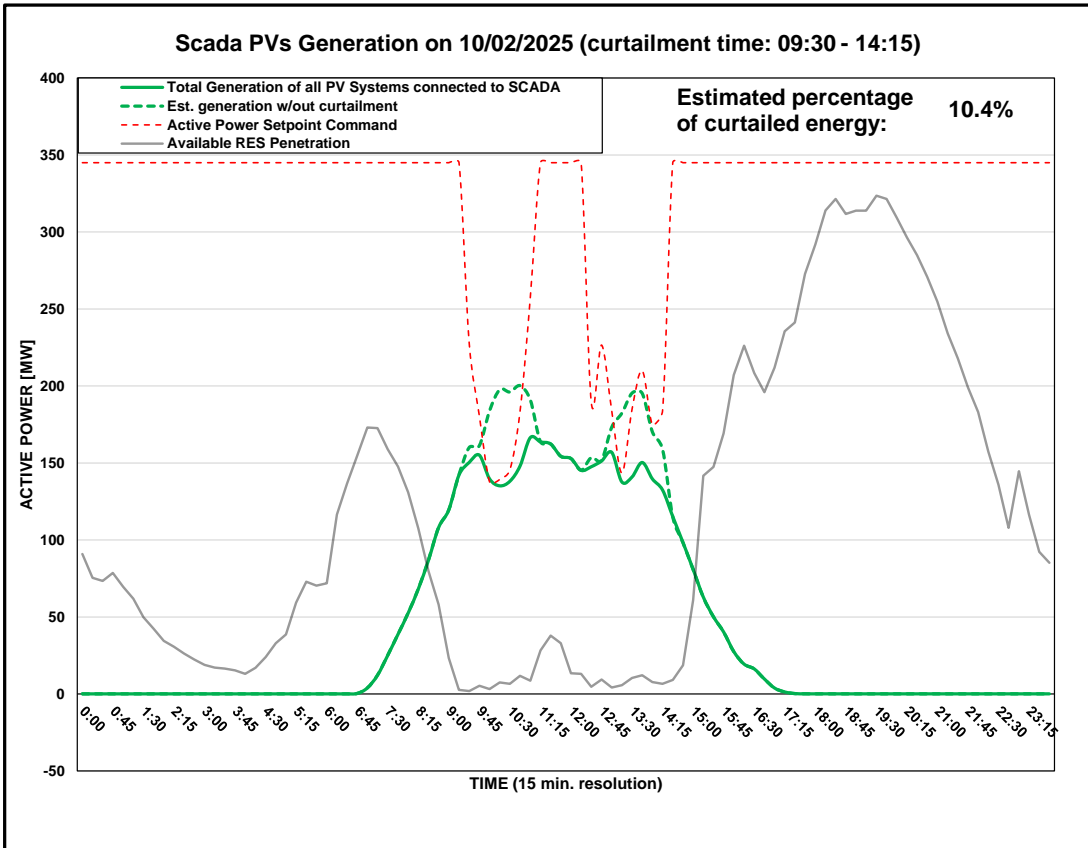


DISTRIBUTION SYSTEM OPERATOR SYSTEM OPERATION



PV Generation Curtailment Report

| | |
|------------------------------------|--|
| Date of Curtailment: | 10/02/2025 |
| Start of Curtailment | 9:30 |
| End of Curtailment | 14:15 |
| Instruction from TSOC | YES |
| Reason of Curtailment: | RES-E Generation Restriction due to low loading of the electrical system |
| Total Estimated Energy of the day: | 1159 MWh |
| Total Estimated Curtailed Energy: | 120.2 MWh |
| Percentage of Curtailed Energy: | 10.4% |

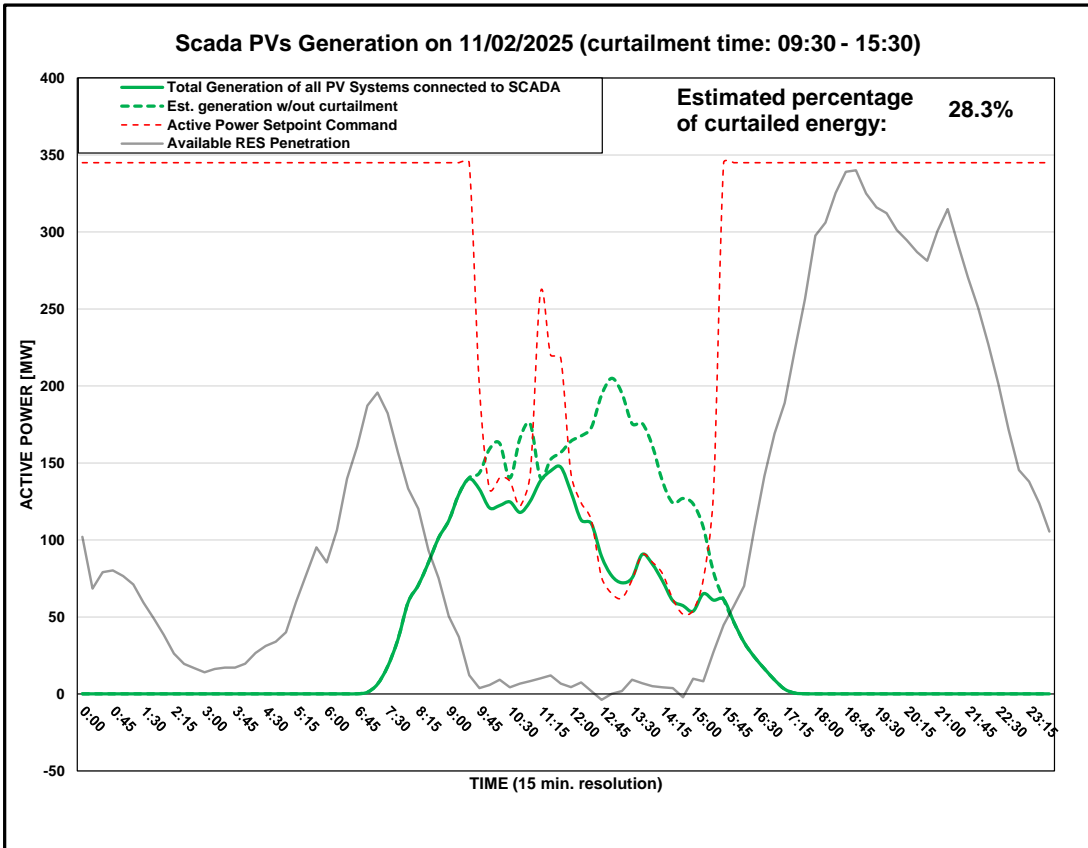


DISTRIBUTION SYSTEM OPERATOR SYSTEM OPERATION



PV Generation Curtailment Report

| | |
|------------------------------------|--|
| Date of Curtailment: | 11/02/2025 |
| Start of Curtailment | 9:30 |
| End of Curtailment | 15:30 |
| Instruction from TSOC | YES |
| Reason of Curtailment: | RES-E Generation Restriction due to low loading of the electrical system |
| Total Estimated Energy of the day: | 1166.9 MWh |
| Total Estimated Curtailed Energy: | 329.9 MWh |
| Percentage of Curtailed Energy: | 28.3% |

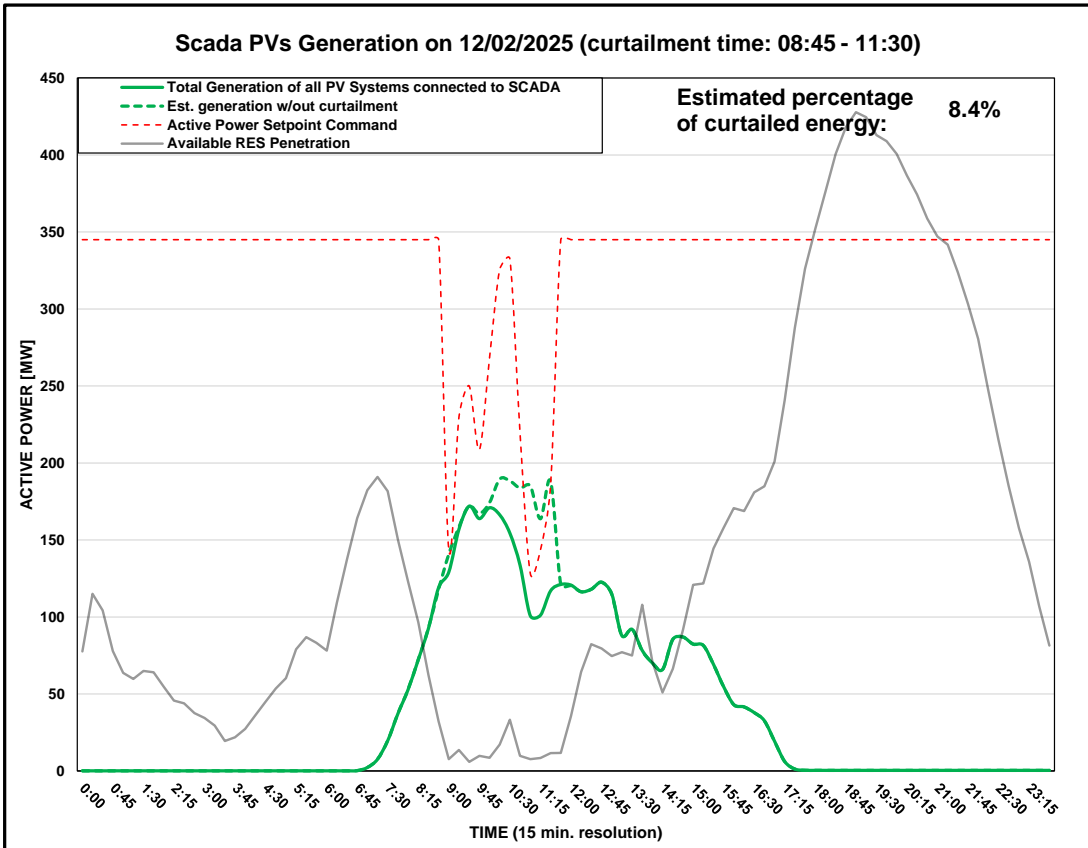


DISTRIBUTION SYSTEM OPERATOR SYSTEM OPERATION



PV Generation Curtailment Report

| | |
|------------------------------------|--|
| Date of Curtailment: | 12/02/2025 |
| Start of Curtailment | 8:45 |
| End of Curtailment | 11:30 |
| Instruction from TSOC | YES |
| Reason of Curtailment: | RES-E Generation Restriction due to low loading of the electrical system |
| Total Estimated Energy of the day: | 1018.7 MWh |
| Total Estimated Curtailed Energy: | 86 MWh |
| Percentage of Curtailed Energy: | 8.4% |

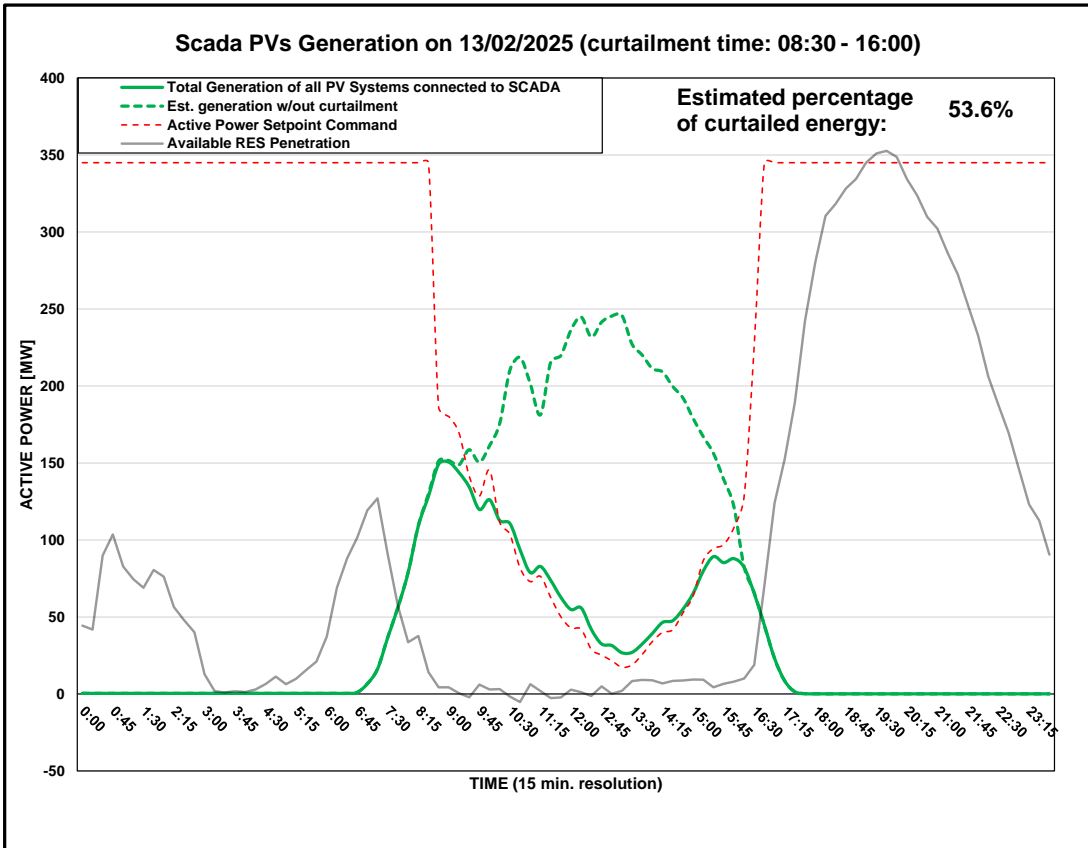


DISTRIBUTION SYSTEM OPERATOR SYSTEM OPERATION



PV Generation Curtailment Report

| | | |
|---|--|--|
| Date of Curtailment: | 13/02/2025 | Cut-off of PV Systems using RIPPLE: |
| Start of Curtailment | 8:30 | Cut-off areas using RIPPLE: NIC 2 |
| End of Curtailment | 16:00 | |
| Instruction from TSOC | YES | Start of cut-off: 13:00 End of cut-off: 16:30 |
| Reason of Curtailment: | RES-E Generation Restriction due to low loading of the electrical system | |
| Total Estimated Energy of the day: | 1621.5 MWh | Total Est. Energy of the cut-off PV systems using RIPPLE: 31.4MWh |
| Total Estimated Curtailed Energy: | 869 MWh | |
| Percentage of Curtailed Energy: | 53.6% | |

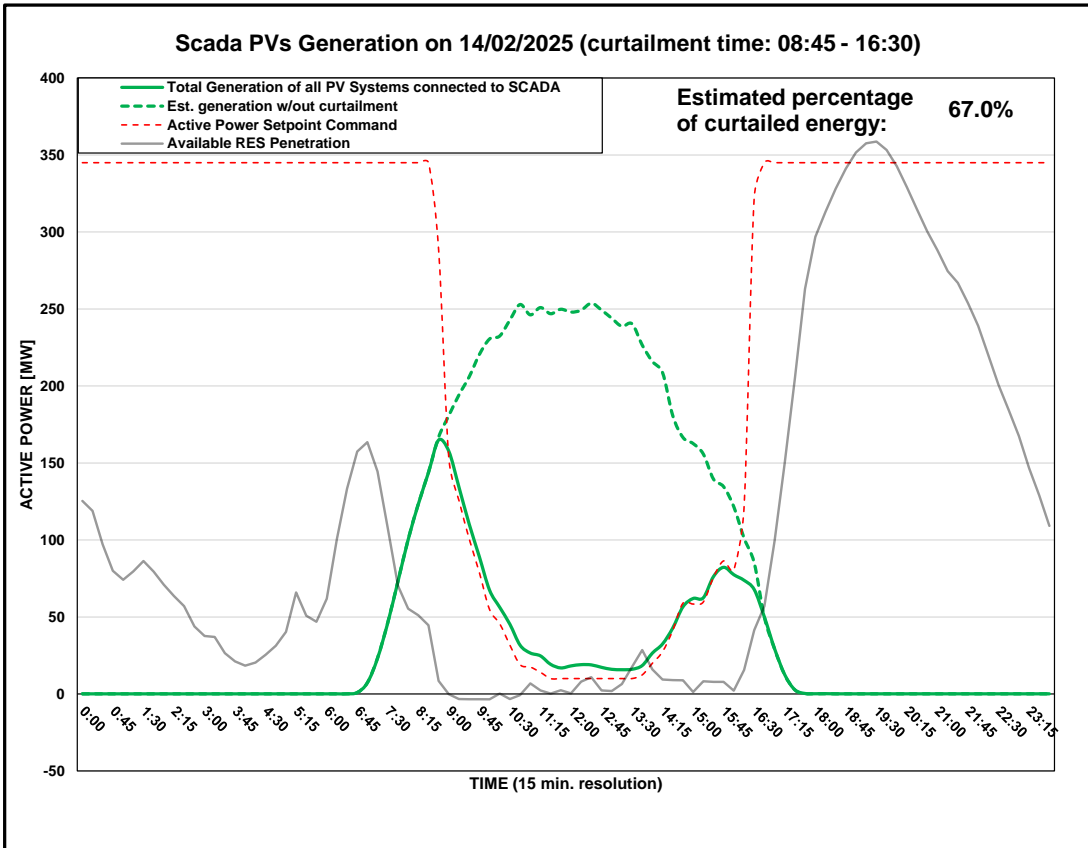


DISTRIBUTION SYSTEM OPERATOR SYSTEM OPERATION



PV Generation Curtailment Report

| | | |
|---|--|--|
| Date of Curtailment: | 14/02/2025 | Cut-off of PV Systems using RIPPLE: |
| Start of Curtailment | 8:45 | Cut-off areas using RIPPLE: NIC 1, NIC 2, PAF 1 |
| End of Curtailment | 16:30 | |
| Instruction from TSOC | YES | Start of cut-off: 11:15 End of cut-off: 14:30 |
| Reason of Curtailment: | RES-E Generation Restriction due to low loading of the electrical system | |
| Total Estimated Energy of the day: | 1790 MWh | Total Est. Energy of the cut-off PV systems using RIPPLE: 89MWh |
| Total Estimated Curtailed Energy: | 1199.6 MWh | |
| Percentage of Curtailed Energy: | 67.0% | |



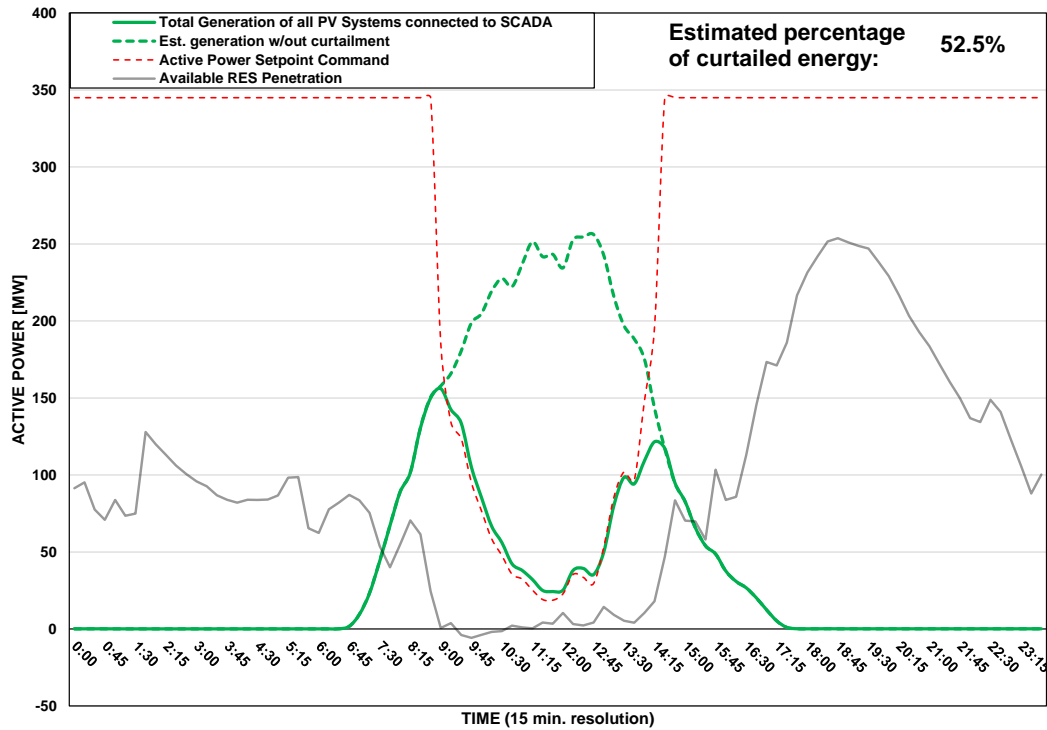
DISTRIBUTION SYSTEM OPERATOR SYSTEM OPERATION



PV Generation Curtailment Report

| | | |
|---|--|--|
| Date of Curtailment: | 15/02/2025 | Cut-off of PV Systems using RIPPLE and IoT: |
| Start of Curtailment | 9:00 | Cut-off areas using RIPPLE: NIC 2, LAR 1 Cut-off areas using IoT: PV-LCA/FAM3 |
| End of Curtailment | 14:15 | |
| Instruction from TSOC | YES | Start of cut-off: 11:15 End of cut-off: 14:30 |
| Reason of Curtailment: | RES-E Generation Restriction due to low loading of the electrical system | |
| Total Estimated Energy of the day: | 1482.6 MWh | Total Est. Energy of the cut-off PV systems using RIPPLE: 75.7MWh |
| Total Estimated Curtailed Energy: | 778.2 MWh | Total Est. Energy of the cut-off PV systems using IoT: 4MWh |
| Percentage of Curtailed Energy: | 52.5% | |

Scada PVs Generation on 15/02/2025 (curtailment time: 09:00 - 14:15)

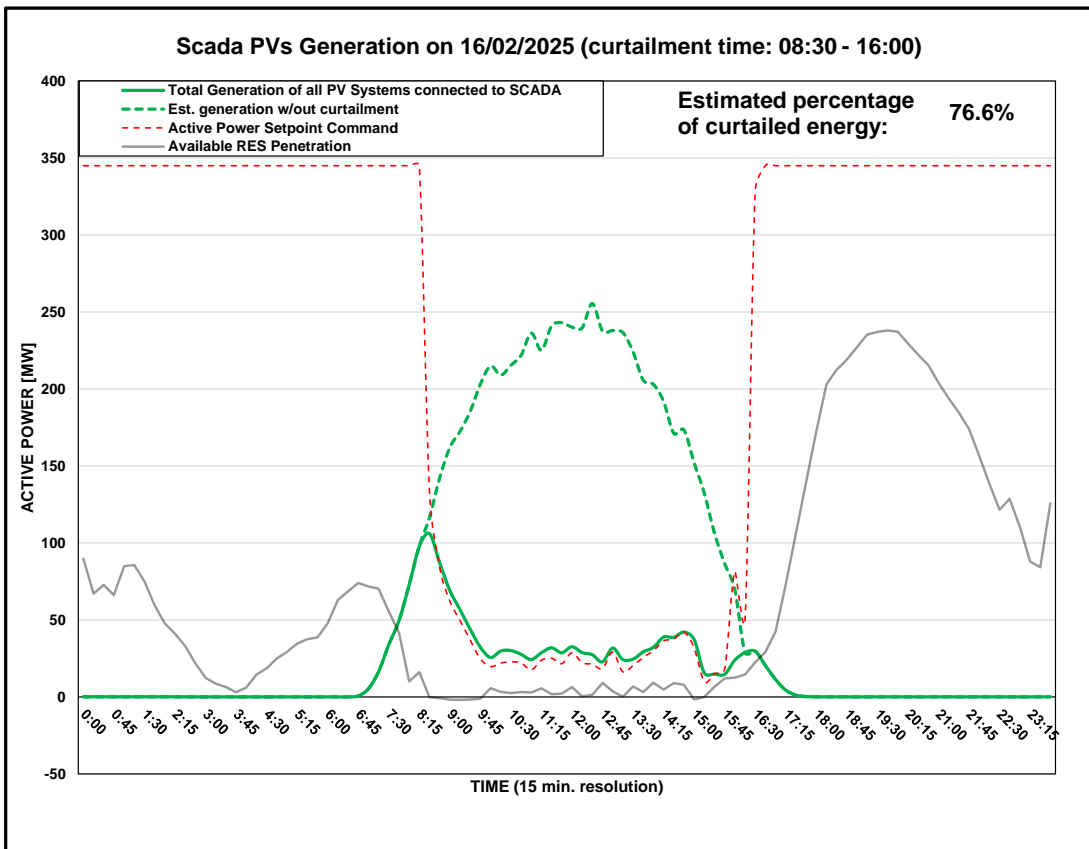


DISTRIBUTION SYSTEM OPERATOR SYSTEM OPERATION



PV Generation Curtailment Report

| | | |
|---|--|--|
| Date of Curtailment: | 16/02/2025 | Cut-off of PV Systems using RIPPLE and IoT: |
| Start of Curtailment | 8:30 | Cut-off areas using RIPPLE: NIC 1, NIC 2, LAR 1, LAR 2, LIM 1, PAF 1 Cut-off areas using IoT: PV-NIC1, PV-NIC4, PV-LCA/FAM1, PV-LCA/FAM3, PV-LIM3 |
| End of Curtailment | 16:00 | |
| Instruction from TSOC | YES | Start of cut-off: 09:30 End of cut-off: 16:00 |
| Reason of Curtailment: | RES-E Generation Restriction due to low loading of the electrical system | |
| Total Estimated Energy of the day: | 1582 MWh | Total Est. Energy of the cut-off PV systems using RIPPLE: 278.6MWh |
| Total Estimated Curtailed Energy: | 1212.5 MWh | Total Est. Energy of the cut-off PV systems using IoT: 190.6MWh |
| Percentage of Curtailed Energy: | 76.6% | |

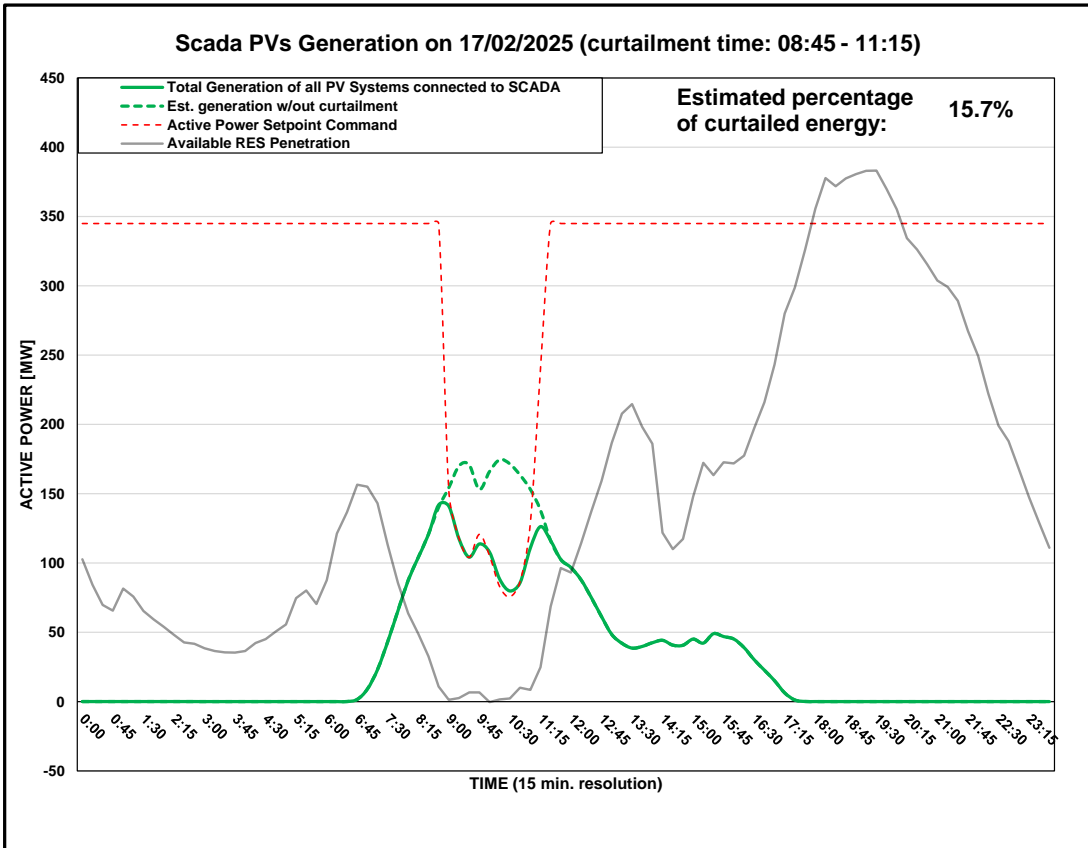


DISTRIBUTION SYSTEM OPERATOR SYSTEM OPERATION



PV Generation Curtailment Report

| | |
|------------------------------------|--|
| Date of Curtailment: | 17/02/2025 |
| Start of Curtailment | 8:45 |
| End of Curtailment | 11:15 |
| Instruction from TSOC | YES |
| Reason of Curtailment: | RES-E Generation Restriction due to low loading of the electrical system |
| Total Estimated Energy of the day: | 858.6 MWh |
| Total Estimated Curtailed Energy: | 134.7 MWh |
| Percentage of Curtailed Energy: | 15.7% |

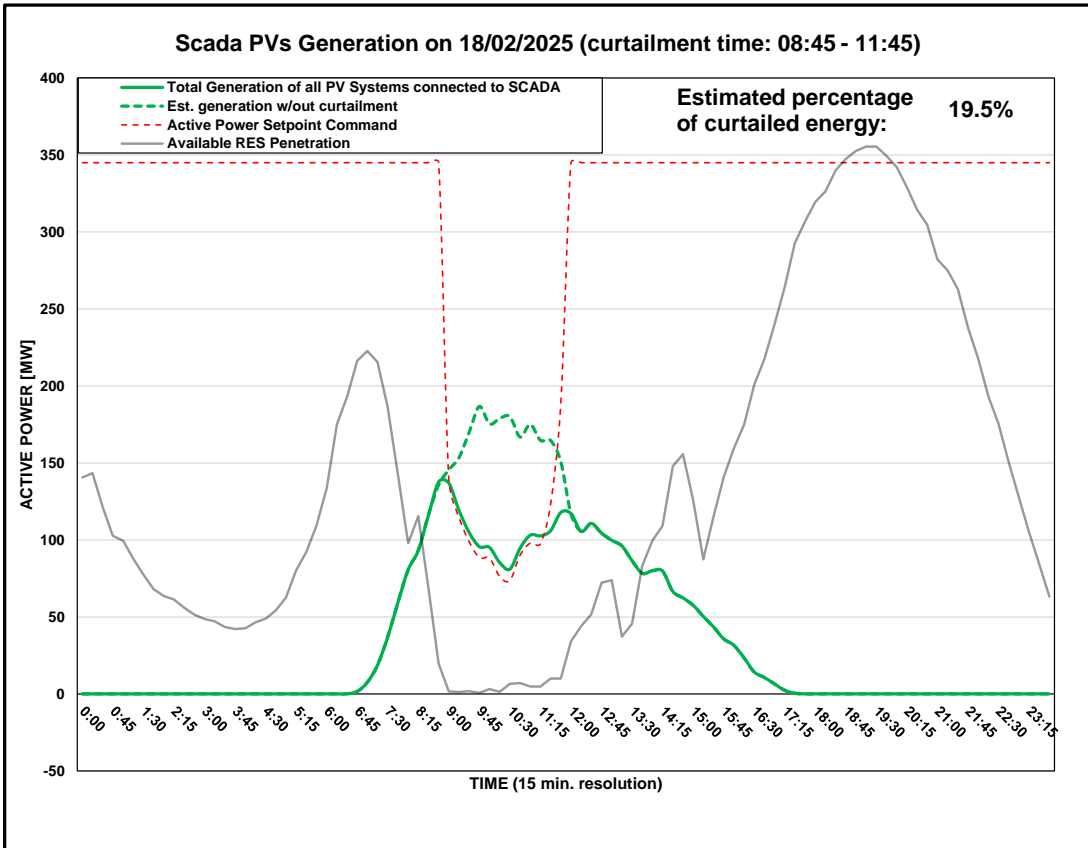


DISTRIBUTION SYSTEM OPERATOR SYSTEM OPERATION



PV Generation Curtailment Report

| | |
|------------------------------------|--|
| Date of Curtailment: | 18/02/2025 |
| Start of Curtailment | 8:45 |
| End of Curtailment | 11:45 |
| Instruction from TSOC | YES |
| Reason of Curtailment: | RES-E Generation Restriction due to low loading of the electrical system |
| Total Estimated Energy of the day: | 982.4 MWh |
| Total Estimated Curtailed Energy: | 192 MWh |
| Percentage of Curtailed Energy: | 19.5% |



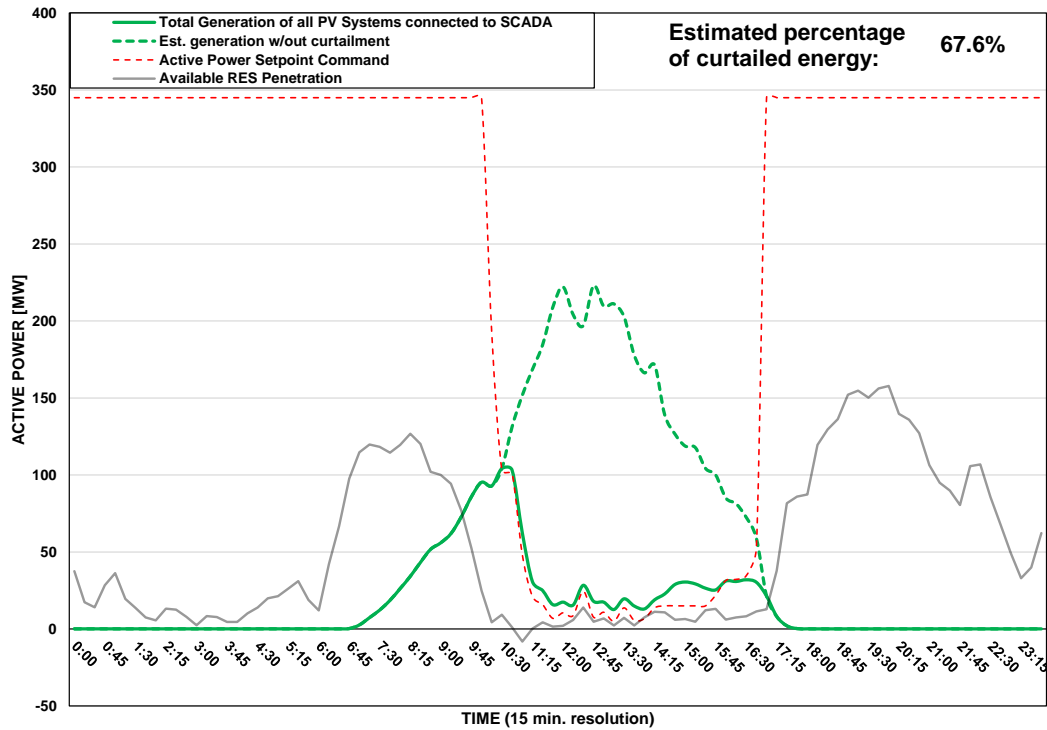
DISTRIBUTION SYSTEM OPERATOR SYSTEM OPERATION



PV Generation Curtailment Report

| | | |
|---|--|---|
| Date of Curtailment: | 19/02/2025 | Cut-off of PV Systems using RIPPLE and IoT: |
| Start of Curtailment | 10:45 | Cut-off areas using RIPPLE: NIC 1, NIC 2, LAR 1, LAR 2, LIM 1, LIM 2, PAF 1 Cut-off areas using IoT: PV-NIC1, PV-NIC4, PV-LCA/FAM1, PV-LIM3, PV-PAF3 |
| End of Curtailment | 16:45 | |
| Instruction from TSOC | YES | Start of cut-off: 11:15 End of cut-off: 16:45 |
| Reason of Curtailment: | RES-E Generation Restriction due to low loading of the electrical system | |
| Total Estimated Energy of the day: | 1158.8 MWh | Total Est. Energy of the cut-off PV systems using RIPPLE: 283MWh |
| Total Estimated Curtailed Energy: | 783.6 MWh | Total Est. Energy of the cut-off PV systems using IoT: 160.6MWh |
| Percentage of Curtailed Energy: | 67.6% | |

Scada PVs Generation on 19/02/2025 (curtailment time: 10:45 - 16:45)



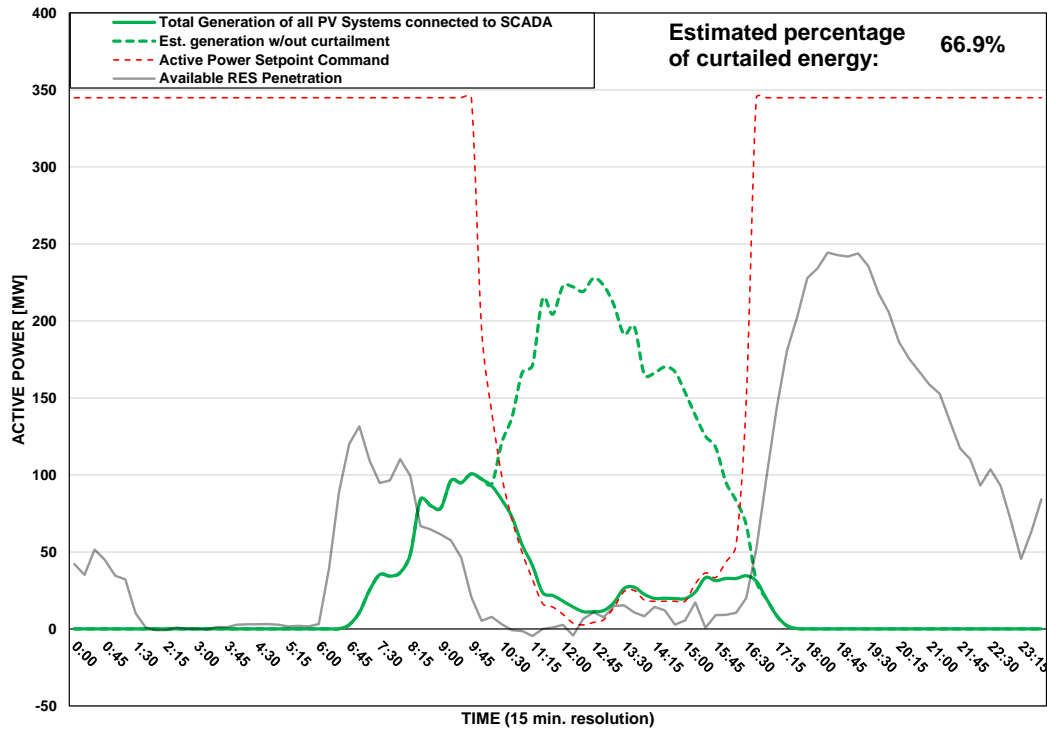
DISTRIBUTION SYSTEM OPERATOR SYSTEM OPERATION



PV Generation Curtailment Report

| | | |
|---|--|--|
| Date of Curtailment: | 20/02/2025 | Cut-off of PV Systems using RIPPLE and IoT: |
| Start of Curtailment | 10:15 | Cut-off areas using RIPPLE: NIC 2, NIC 3, LAR 1, LIM 1, PAF 2 Cut-off areas using IoT: PV-NIC1, PV-NIC4, PV-LCA/FAM3, PV-PAF3 |
| End of Curtailment | 16:30 | |
| Instruction from TSOC | YES | Start of cut-off: 11:30 End of cut-off: 15:15 |
| Reason of Curtailment: | RES-E Generation Restriction due to low loading of the electrical system | |
| Total Estimated Energy of the day: | 1290.7 MWh | Total Est. Energy of the cut-off PV systems using RIPPLE: 170.1MWh |
| Total Estimated Curtailed Energy: | 863.7 MWh | Total Est. Energy of the cut-off PV systems using IoT: 43.3MWh |
| Percentage of Curtailed Energy: | 66.9% | |

Scada PVs Generation on 20/02/2025 (curtailment time: 10:15 - 16:30)

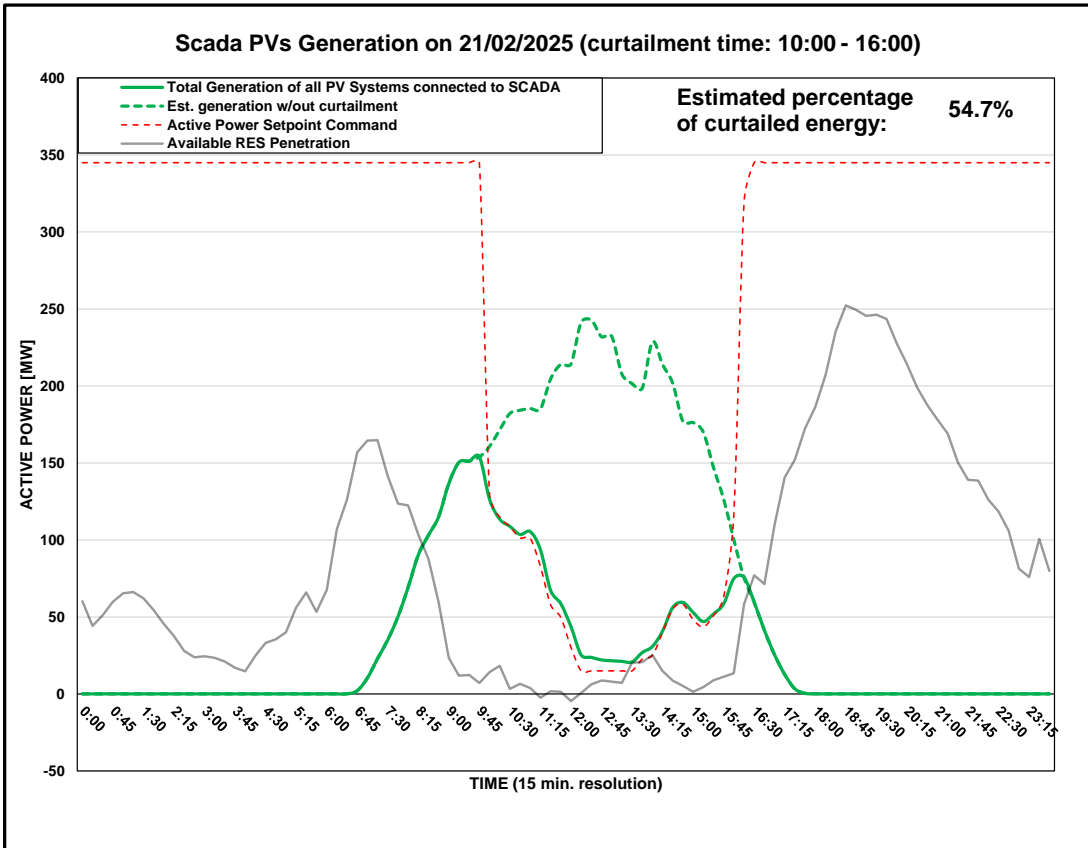


DISTRIBUTION SYSTEM OPERATOR SYSTEM OPERATION



PV Generation Curtailment Report

| | | |
|---|--|--|
| Date of Curtailment: | 21/02/2025 | Cut-off of PV Systems using RIPPLE: |
| Start of Curtailment | 10:00 | Cut-off areas using RIPPLE: NIC 2, PAF 1, PAF 2 |
| End of Curtailment | 16:00 | |
| Instruction from TSOC | YES | Start of cut-off: 12:00 End of cut-off: 15:15 |
| Reason of Curtailment: | RES-E Generation Restriction due to low loading of the electrical system | |
| Total Estimated Energy of the day: | 1527.9 MWh | Total Est. Energy of the cut-off PV systems using RIPPLE: 67.2MWh |
| Total Estimated Curtailed Energy: | 836 MWh | |
| Percentage of Curtailed Energy: | 54.7% | |

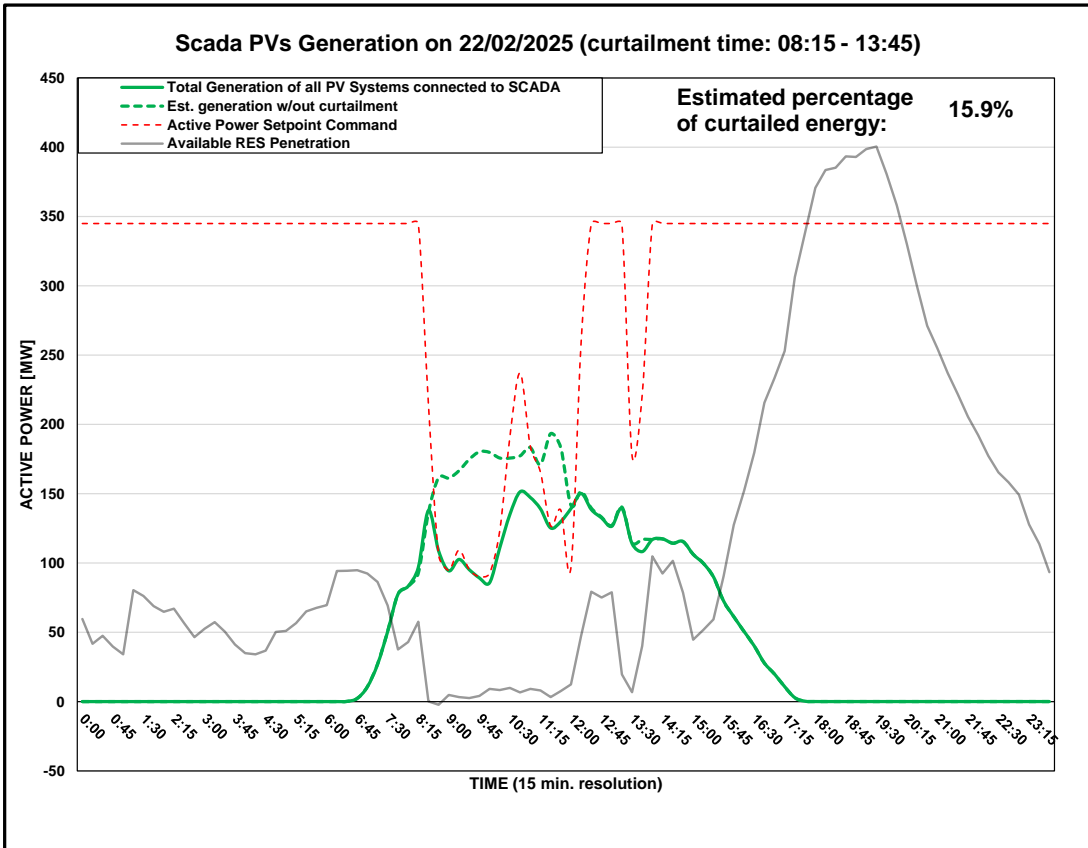


DISTRIBUTION SYSTEM OPERATOR SYSTEM OPERATION



PV Generation Curtailment Report

| | |
|------------------------------------|--|
| Date of Curtailment: | 22/02/2025 |
| Start of Curtailment | 8:15 |
| End of Curtailment | 13:45 |
| Instruction from TSOC | YES |
| Reason of Curtailment: | RES-E Generation Restriction due to low loading of the electrical system |
| Total Estimated Energy of the day: | 1220.1 MWh |
| Total Estimated Curtailed Energy: | 193.5 MWh |
| Percentage of Curtailed Energy: | 15.9% |

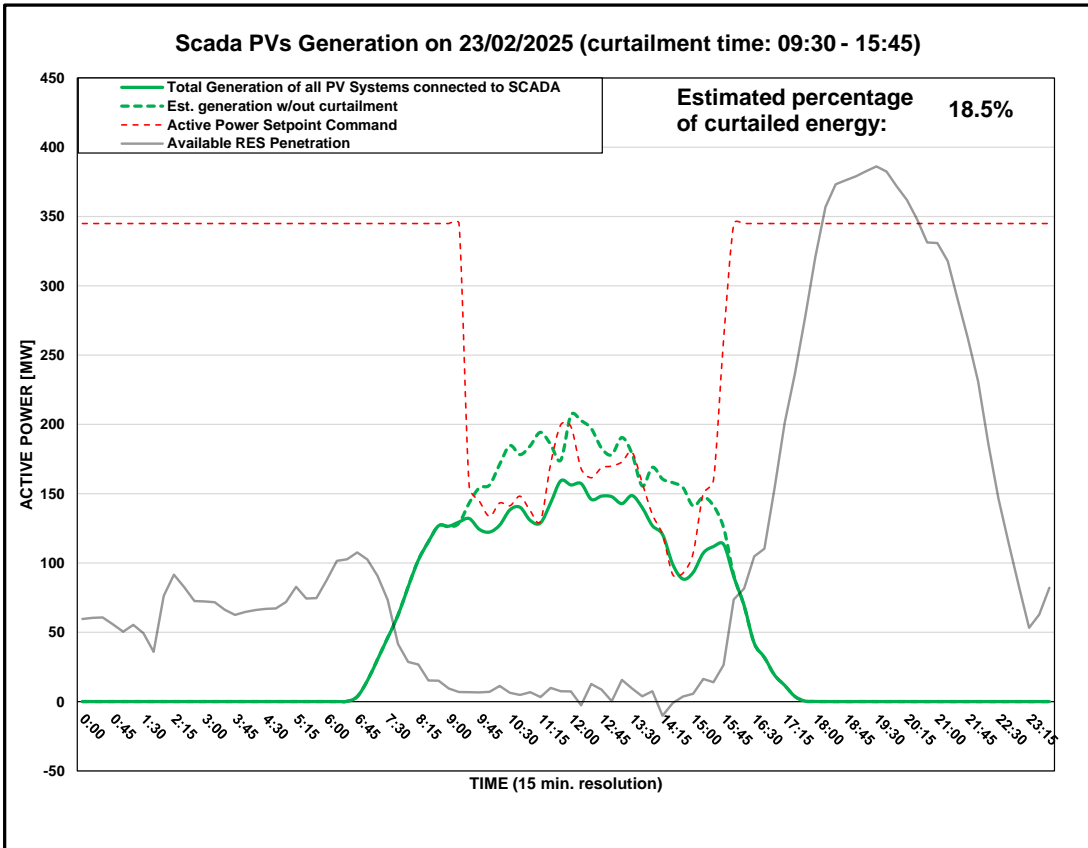


DISTRIBUTION SYSTEM OPERATOR SYSTEM OPERATION



PV Generation Curtailment Report

| | |
|------------------------------------|--|
| Date of Curtailment: | 23/02/2025 |
| Start of Curtailment | 9:30 |
| End of Curtailment | 15:45 |
| Instruction from TSOC | YES |
| Reason of Curtailment: | RES-E Generation Restriction due to low loading of the electrical system |
| Total Estimated Energy of the day: | 1382.8 MWh |
| Total Estimated Curtailed Energy: | 255.5 MWh |
| Percentage of Curtailed Energy: | 18.5% |

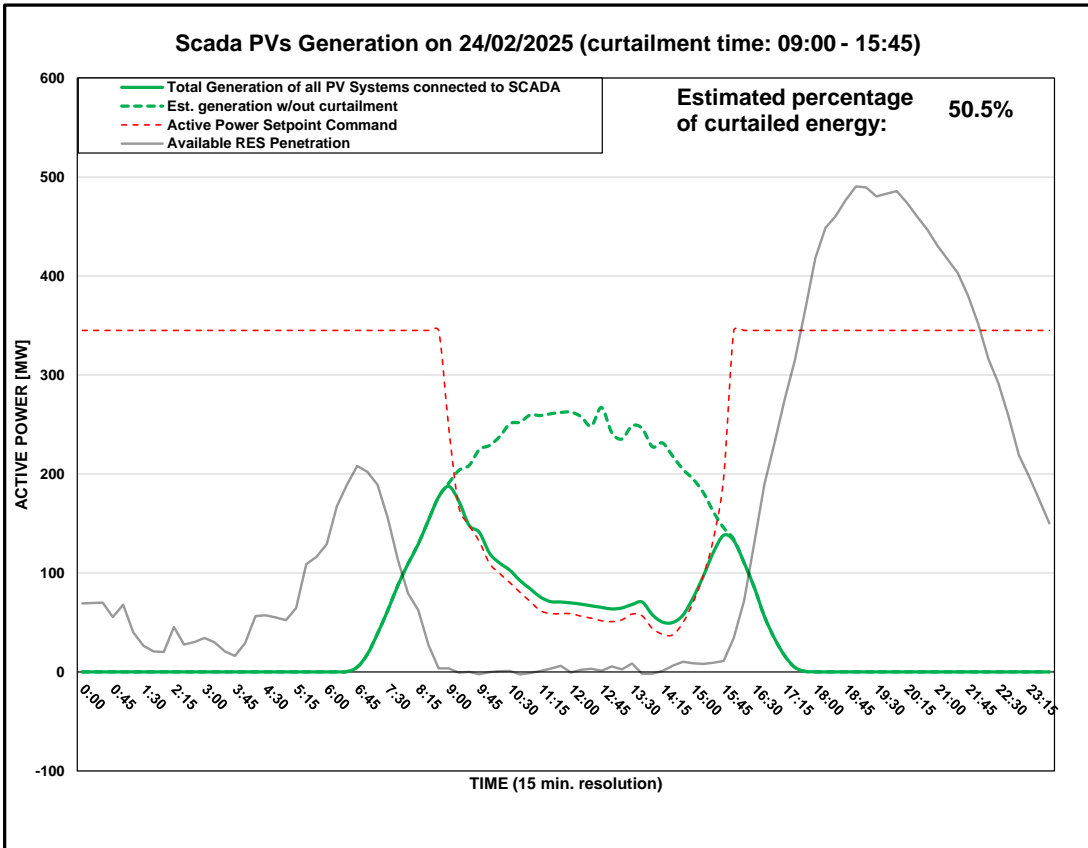


DISTRIBUTION SYSTEM OPERATOR SYSTEM OPERATION



PV Generation Curtailment Report

| | |
|------------------------------------|--|
| Date of Curtailment: | 24/02/2025 |
| Start of Curtailment | 9:00 |
| End of Curtailment | 15:45 |
| Instruction from TSOC | YES |
| Reason of Curtailment: | RES-E Generation Restriction due to low loading of the electrical system |
| Total Estimated Energy of the day: | 1909.3 MWh |
| Total Estimated Curtailed Energy: | 963.3 MWh |
| Percentage of Curtailed Energy: | 50.5% |

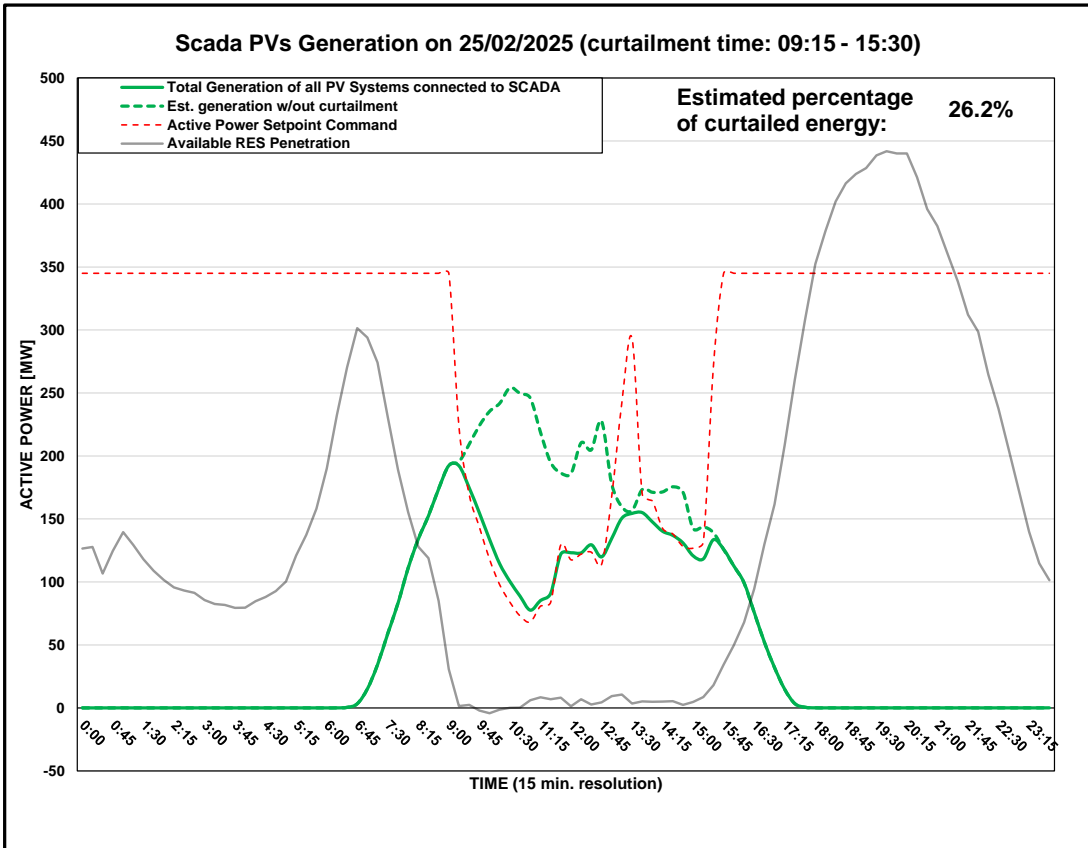


DISTRIBUTION SYSTEM OPERATOR SYSTEM OPERATION



PV Generation Curtailment Report

| | |
|------------------------------------|--|
| Date of Curtailment: | 25/02/2025 |
| Start of Curtailment | 9:15 |
| End of Curtailment | 15:30 |
| Instruction from TSOC | YES |
| Reason of Curtailment: | RES-E Generation Restriction due to low loading of the electrical system |
| Total Estimated Energy of the day: | 1636.5 MWh |
| Total Estimated Curtailed Energy: | 428.4 MWh |
| Percentage of Curtailed Energy: | 26.2% |

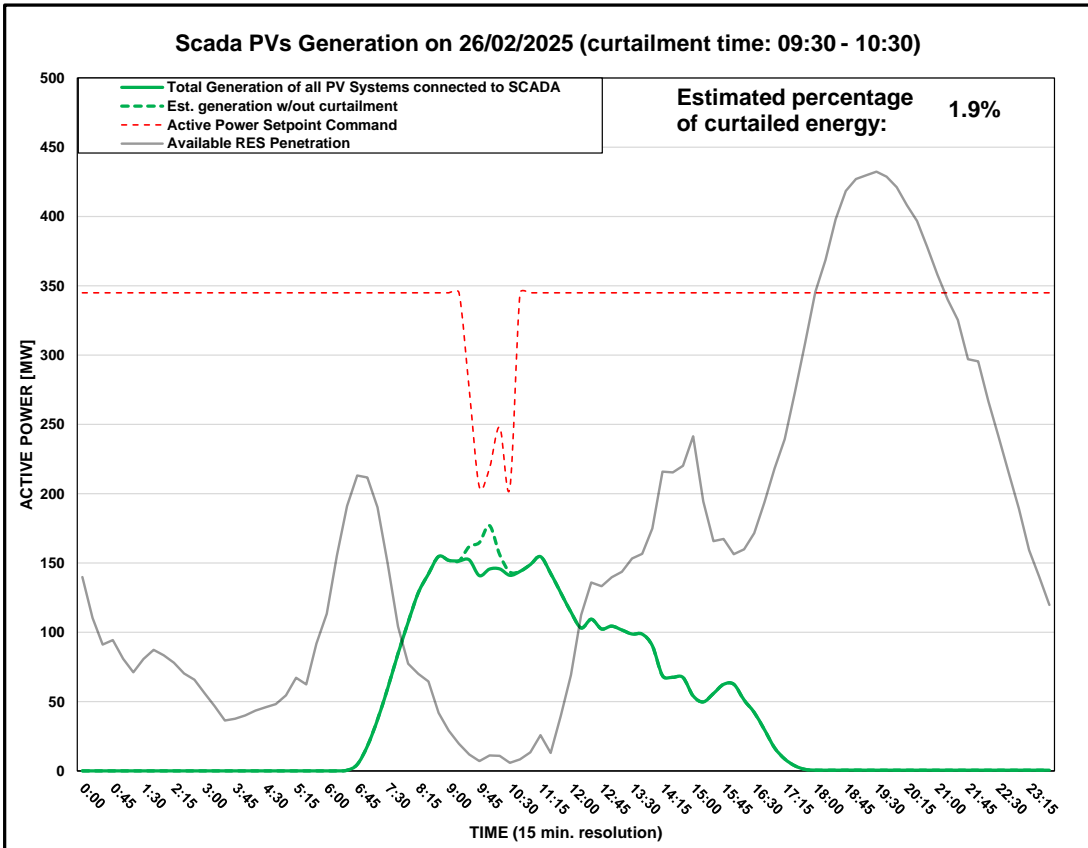


DISTRIBUTION SYSTEM OPERATOR SYSTEM OPERATION



PV Generation Curtailment Report

| | |
|------------------------------------|--|
| Date of Curtailment: | 26/02/2025 |
| Start of Curtailment | 9:30 |
| End of Curtailment | 10:30 |
| Instruction from TSOC | YES |
| Reason of Curtailment: | RES-E Generation Restriction due to low loading of the electrical system |
| Total Estimated Energy of the day: | 1035.7 MWh |
| Total Estimated Curtailed Energy: | 19.4 MWh |
| Percentage of Curtailed Energy: | 1.9% |

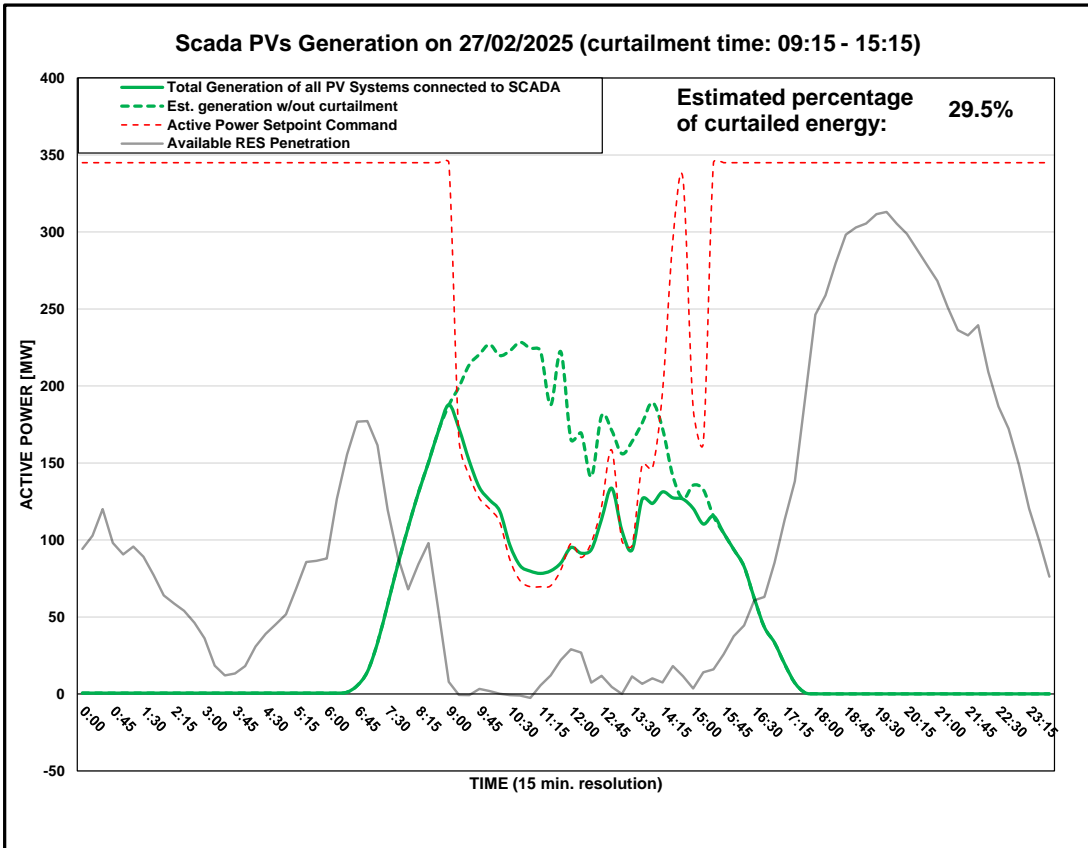


DISTRIBUTION SYSTEM OPERATOR SYSTEM OPERATION



PV Generation Curtailment Report

| | |
|------------------------------------|--|
| Date of Curtailment: | 27/02/2025 |
| Start of Curtailment | 9:15 |
| End of Curtailment | 15:15 |
| Instruction from TSOC | YES |
| Reason of Curtailment: | RES-E Generation Restriction due to low loading of the electrical system |
| Total Estimated Energy of the day: | 1533.3 MWh |
| Total Estimated Curtailed Energy: | 452.9 MWh |
| Percentage of Curtailed Energy: | 29.5% |



DISTRIBUTION SYSTEM OPERATOR SYSTEM OPERATION



PV Generation Curtailment Report

| | | |
|---|--|--|
| Date of Curtailment: | 28/02/2025 | Cut-off of PV Systems using RIPPLE: |
| Start of Curtailment | 9:00 | Cut-off areas using RIPPLE: LIM 2 |
| End of Curtailment | 15:30 | |
| Instruction from TSOC | YES | Start of cut-off: 12:15 End of cut-off: 13:45 |
| Reason of Curtailment: | RES-E Generation Restriction due to low loading of the electrical system | |
| Total Estimated Energy of the day: | 1331.5 MWh | Total Est. Energy of the cut-off PV systems using RIPPLE: 24.7MWh |
| Total Estimated Curtailed Energy: | 622.3 MWh | |
| Percentage of Curtailed Energy: | 46.7% | |

Scada PVs Generation on 28/02/2025 (curtailment time: 09:00 - 15:30)

